

## VI. TIP PROJECT INFORMATION

### A. Project and Environmental Justice Maps by Jurisdiction

The following maps show the locations of specific TIP projects in relation to Environmental Justice (EJ) TAZs. Each map shows all EJ TAZs, breaking EJ TAZs into those exceeding the regional average for households in poverty (9.9%), those exceeding the regional average for minority concentration (43.5%), and those exceeding both regional averages. Section II.B includes further discussion on EJ and the identification of EJ TAZs.

The long-range transportation plan, *Maximize2045*, includes an extensive environmental justice analysis. BMC staff utilized several measures to compare the effects on EJ and non-EJ TAZs of projects in the preferred alternative of *Maximize2045*, including nonexempt projects in the TIP. These measures include accessibility to jobs and shopping, travel times for commuting and for other purposes, and

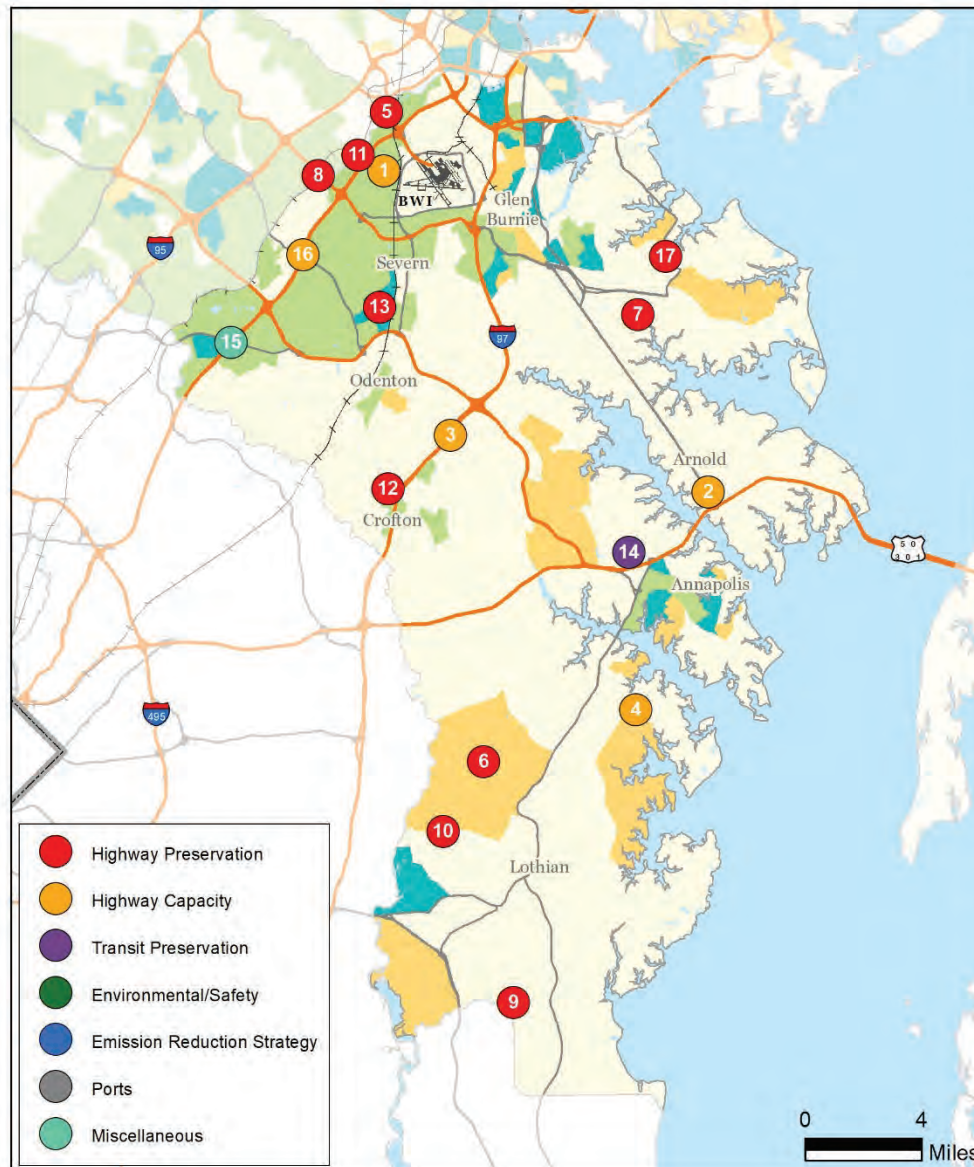
proximity to key destinations such as supermarkets and hospitals.<sup>10</sup>

The project listings accompanying each map represent the TIP projects that can be shown through mapping techniques. There are numerous projects that cannot be mapped such as bus purchases and operating assistance. For more detailed project information, please refer to the annual element in section V.F or the full project listing following these maps in section VI.B. A project index is included at the end of the document.

---

<sup>10</sup> Further details on this EJ analysis can be found starting on page 8 of Appendix C in *Maximize2045*:  
[https://baltometro.org/sites/default/files/bmc\\_documents/general/transportation/long-range/2045/max2045\\_s12\\_appxC\\_evalating-potential-effects.pdf](https://baltometro.org/sites/default/files/bmc_documents/general/transportation/long-range/2045/max2045_s12_appxC_evalating-potential-effects.pdf)

## Anne Arundel County Projects in Relation to Minority & Poverty Concentrations



### Project Sponsor: Anne Arundel County

1	Hanover Road Corridor Improvement	11-1801-42
2	MD 2: US 50 to Baltimore Annapolis Boulevard	11-2102-41
3	MD 3: Saint Stephens Church Road to MD 175	11-2103-41
4	MD 214: MD 468 to east of Loch Haven Road	11-2104-41
5	Furnace Avenue Bridge over Deep Run	11-1103-13
6	Harwood Road Bridge over Stocketts Run	11-1208-13
7	Magothy Bridge Road Bridge over Magothy River	11-1402-13
8	O'Connor Road Bridge over Deep Run	11-1403-13
9	McKendree Road Culvert over Lyons Creek	11-1601-19
10	Polling House Road Bridge over Rock Branch	11-1602-13
11	Hanover Road Bridge over Deep Run	11-2105-13
12	Conway Road Bridge over Little Patuxent River	11-2106-13
13	Jacobs Road Bridge over Severn Run	11-2107-13
14	Parole Transportation Center	11-2101-66

### Project Sponsor: MDOT Office of the Secretary

15	Baltimore-Washington Superconducting Maglev (SCMAGLEV) Project	90-1901-99
----	--	------------

### Project Sponsor: MDOT State Highway Administration

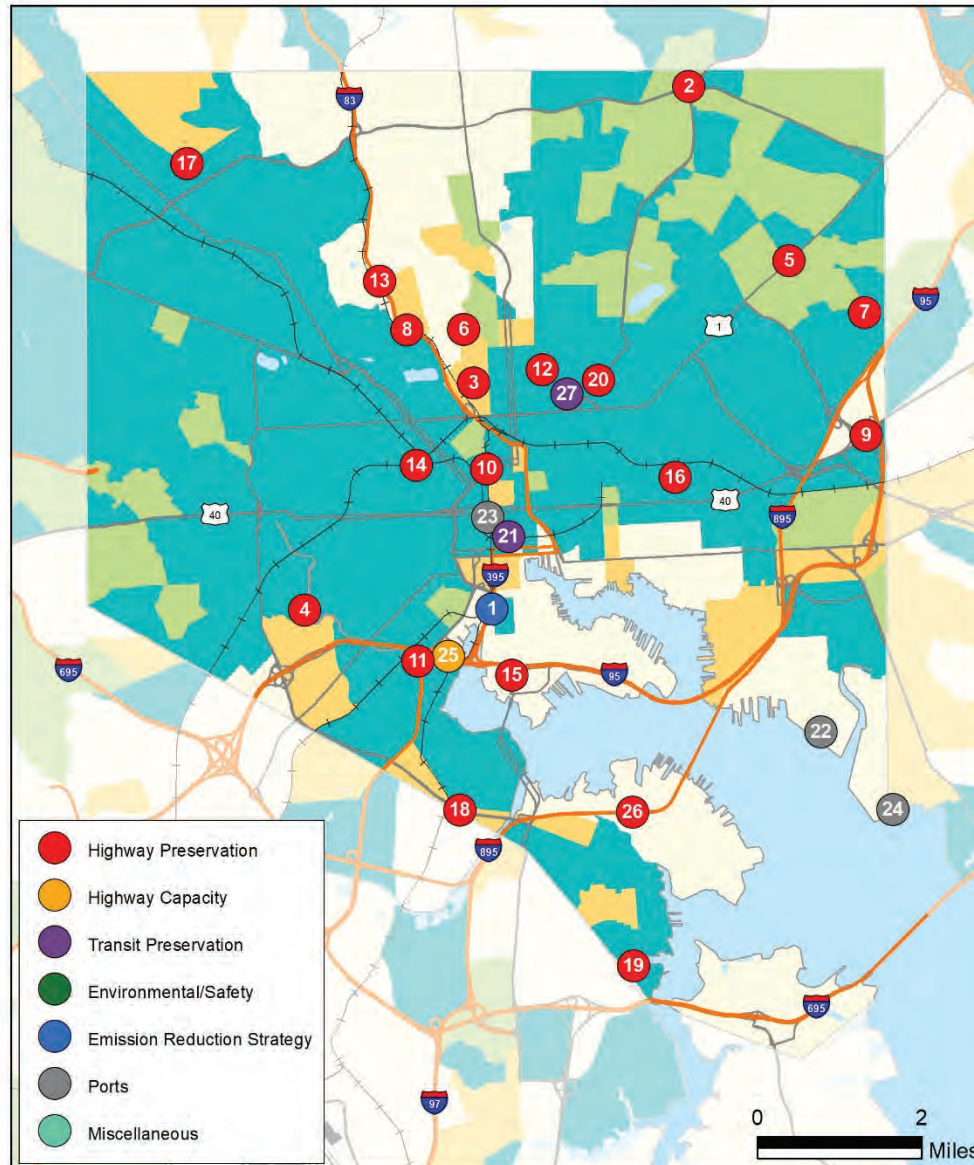
16	MD 175: Sellner Road/Race Road to McCarron Court	61-1701-41
17	MD 173: Bridge Replacement over Rock Creek	61-2101-13

- EJ TAZs: Minority Population Above Regional Average of 43.5%
- EJ TAZs: Household Poverty Above Regional Average of 9.9%
- EJ TAZs: Minority Population & Household Poverty Above Regional Average
- Non EJ TAZs: Minority Population & Household Poverty Below Regional Average

Transportation Analysis Zones (2010) show where the population that is non-white or Hispanic is higher than the regional average of 43.5% and where household poverty is higher than the regional average of 9.9% from the 2015-2019 American Community Survey 5-Year Estimates. Data shown for the Baltimore region only. Data Source: BMC, © HERE 2020, TIGER/Line®, MTA, U.S. Census, American Community Survey.



## Baltimore City Projects in Relation to Minority & Poverty Concentrations



### Project Sponsor: Baltimore City

1	Greenway Middle Branch Phase 2	12-2102-03
2	Perring Parkway Ramp over Herring Run	12-1215-13
3	Sisson Street Bridge over CSX Railroad	12-1216-13
4	Wilkins Avenue Bridge Over Gwynns Falls	12-1403-13
5	Belair Road Complete Streets	12-1404-11
6	Remington Avenue Bridge over Stony Run	12-1602-13
7	Radecke Avenue and Sinclair Lane over Moores Run	12-1603-13
8	I-83 Concrete Deck Mill and Resurface	12-1604-13
9	Moravia Road Ramp Bridge over Pulaski Highway	12-1605-13
10	MLK Boulevard and Howard Street Intersection Improvements	12-1706-11
11	Monroe Street Ramp over CSX and Russell Street over CSX	12-1801-13
12	25th Street Rehabilitation from Greenmount Avenue to Kirk Avenue	12-2001-11
13	41st Street over I-83, MTA Light Rail Tracks, and Jones Falls	12-2002-13
14	Fremont Avenue Rehabilitation from Lafayette Avenue to Pressman Street	12-2007-11
15	Hanover Street Over CSX	12-2008-13
16	Madison Street Rehabilitation from North Milton Avenue to Edison Highway	12-2010-11
17	Park Heights Avenue from West Rogers Avenue to Strathmore Avenue	12-2011-11
18	Patapsco Avenue from Magnolia Avenue to Patapsco River Bridge	12-2012-11
19	Pennington Avenue Rehabilitation from Birch Street to East Ordnance Road	12-2013-11
20	Harford Road Bridge Over CSX	12-2106-13
21	East-West Bus Corridor	12-2201-64

### Project Sponsor: Maryland Port Administration

22	Seagirt Marine Terminal Modernization: Berth Improvements	32-2001-83
23	Howard Street Tunnel	32-2101-83
24	Dundalk Marine Terminal Resiliency and Flood Mitigation Improvements	30-2101-82

### Project Sponsor: Maryland Transportation Authority

25	I-95 Fort McHenry Tunnel: Port Covington Access	22-1901-45
26	I-895/Baltimore Harbor Tunnel Toll Plaza and Interchange Improvements Project	22-2201-19

### Project Sponsor: Maryland Transit Administration

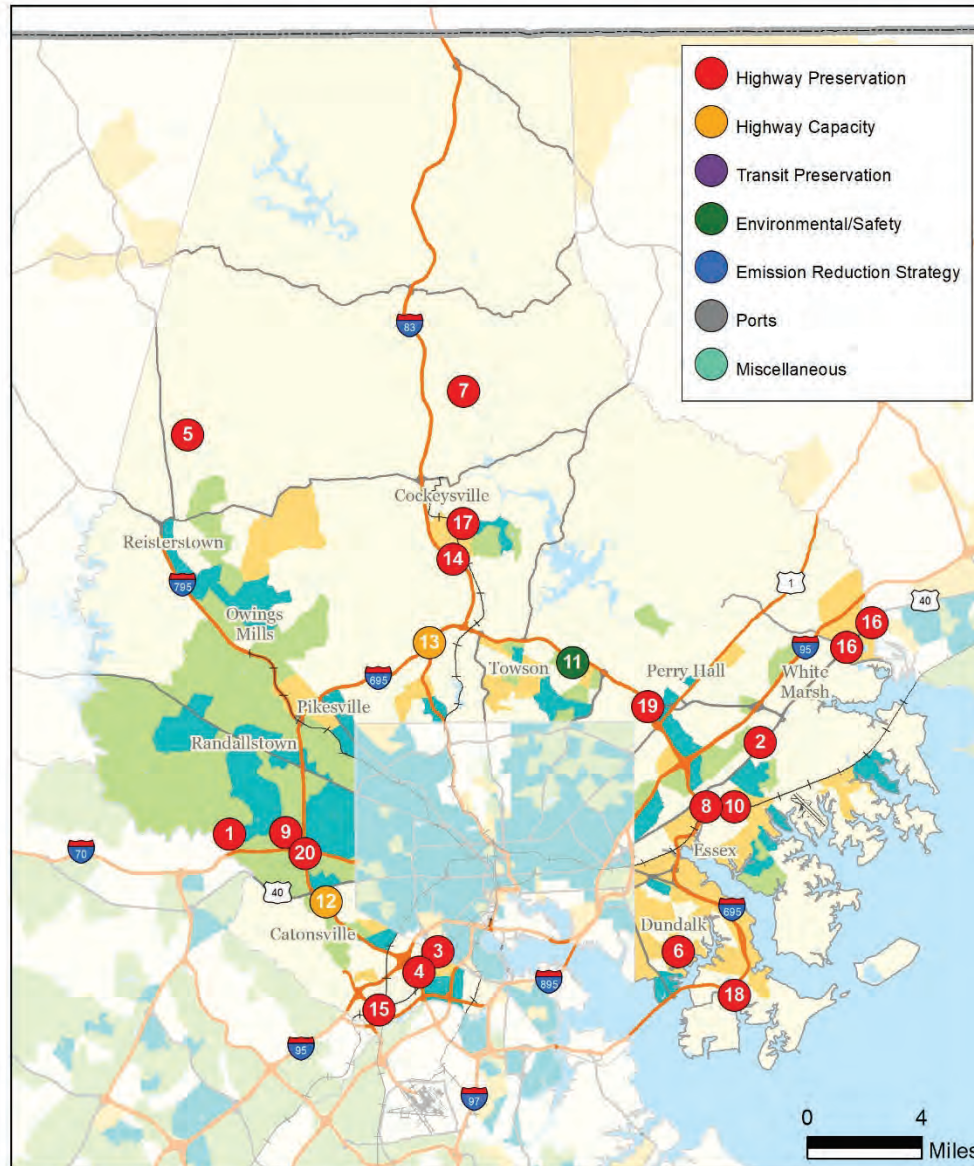
27	Kirk Bus Facility Replacement - Phase 1 & 2	40-1203-65
----	---	------------

EJ TAZs: Minority Population Above Regional Average of 43.5%  
 EJ TAZs: Household Poverty Above Regional Average of 9.9%  
 EJ TAZs: Minority Population & Household Poverty Above Regional Average  
 Non EJ TAZs: Minority Population & Household Poverty Below Regional Average

Transportation Analysis Zones (2010) show where the population that is non-white or Hispanic is higher than the regional average of 43.5% and where household poverty is higher than the regional average of 9.9% from the 2015-2019 American Community Survey 5-Year Estimates. Data shown for the Baltimore region only. Data Source: BMC, © HERE 2020, TIGER/Line®, MTA, U.S. Census, American Community Survey.



## Baltimore County Projects in Relation to Minority & Poverty Concentrations



### Project Sponsor: Baltimore County

1	Dogwood Road Bridge No. B-0072 Over Dogwood Run	13-0001-13
2	Mohrs Lane Bridge No. B-0143 over CSX Railroad	13-0803-13
3	Hammonds Ferry Road Bridge No. B-0100 over CSX Railroad	13-1012-13
4	Lansdowne Boulevard Bridge No. B-0113 over CSX Railroad	13-1105-13
5	Piney Grove Road Bridge No. B-0140 over CSX Railroad	13-1107-13
6	Peninsula Expressway Bridge No. B-0119 over CSX Railroad	13-1108-13
7	Sparks Road Bridge No. B-0018 over Gunpowder Falls	13-1206-13
8	Golden Ring Road Bridge No. B-0110 over Stemmers Run	13-1208-13
9	Rolling Road Bridge No. B-0358 over Branch of Dead Run	13-1209-13
10	Rossville Boulevard Bridge No. B-0132 over Amtrak & Orem Road	13-1701-13

### Project Sponsor: MDOT State Highway Administration

11	I-695 at Cromwell Bridge Road - Drainage Improvement	63-1801-38
12	I-695: US 40 to MD 144	63-1601-41
13	I-695: I-70 to MD 43	63-1802-41
14	I-83: Bridge Replacement over Padonia Road	63-1701-13
15	US 1: Bridge Replacement over CSX	63-1704-13
16	US 40: Bridge Replacements over Little & Big Gunpowder Falls	63-1706-13
17	MD 45: Padonia Road to Wight Avenue	63-1707-11
18	MD 151/MD 151B: Bridge Replacements	63-2001-13
19	I-695: Bridge Replacement on Putty Hill Avenue	63-2002-13
20	I-695: Reconstruction of Interchange at I-70	63-2201-12

EJ TAZs: Minority Population Above Regional Average of 43.5%

EJ TAZs: Household Poverty Above Regional Average of 9.9%

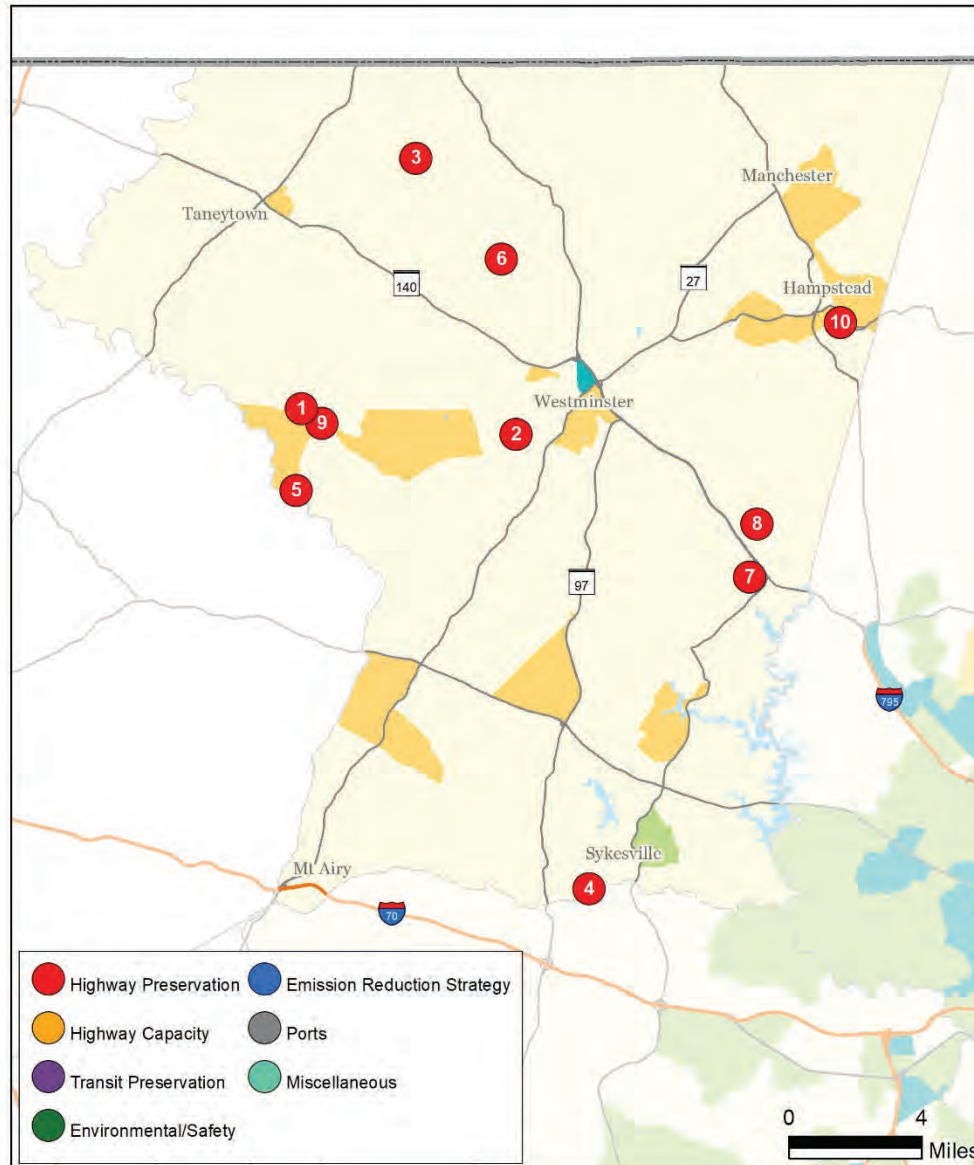
EJ TAZs: Minority Population & Household Poverty Above Regional Average

Non EJ TAZs: Minority Population & Household Poverty Below Regional Average

Transportation Analysis Zones (2010) show where the population that is non-white or Hispanic is higher than the regional average of 43.5% and where household poverty is higher than the regional average of 9.9% from the 2015-2019 American Community Survey 5-Year Estimates. Data shown for the Baltimore region only. Data Source: BMC, © HERE 2020, TIGER/Line®, MTA, U.S. Census, American Community Survey.



## Carroll County Projects in Relation to Minority & Poverty Concentrations



### Project Sponsor: Carroll County

1	Shepherds Mill Road Bridge over Little Pipe Creek	14-1102-13
2	Stone Chapel Road Bridge over Little Pipe Creek	14-1103-13
3	Babylon Road Bridge over Silver Run	14-1601-13
4	Gaither Road Bridge over South Branch Patapsco River	14-1602-13
5	McKinstry's Mill Road Bridge over Sam's Creek	14-1603-13
6	Hughes Shop Road Bridge over Bear Branch	14-1802-13
7	Old Kays Mill Road Culvert over Beaver Run	14-2101-13
8	Brown Road Culvert over Roaring Run	14-2102-13
9	McKinstry's Mill Road over Little Pipe Creek	14-2103-13

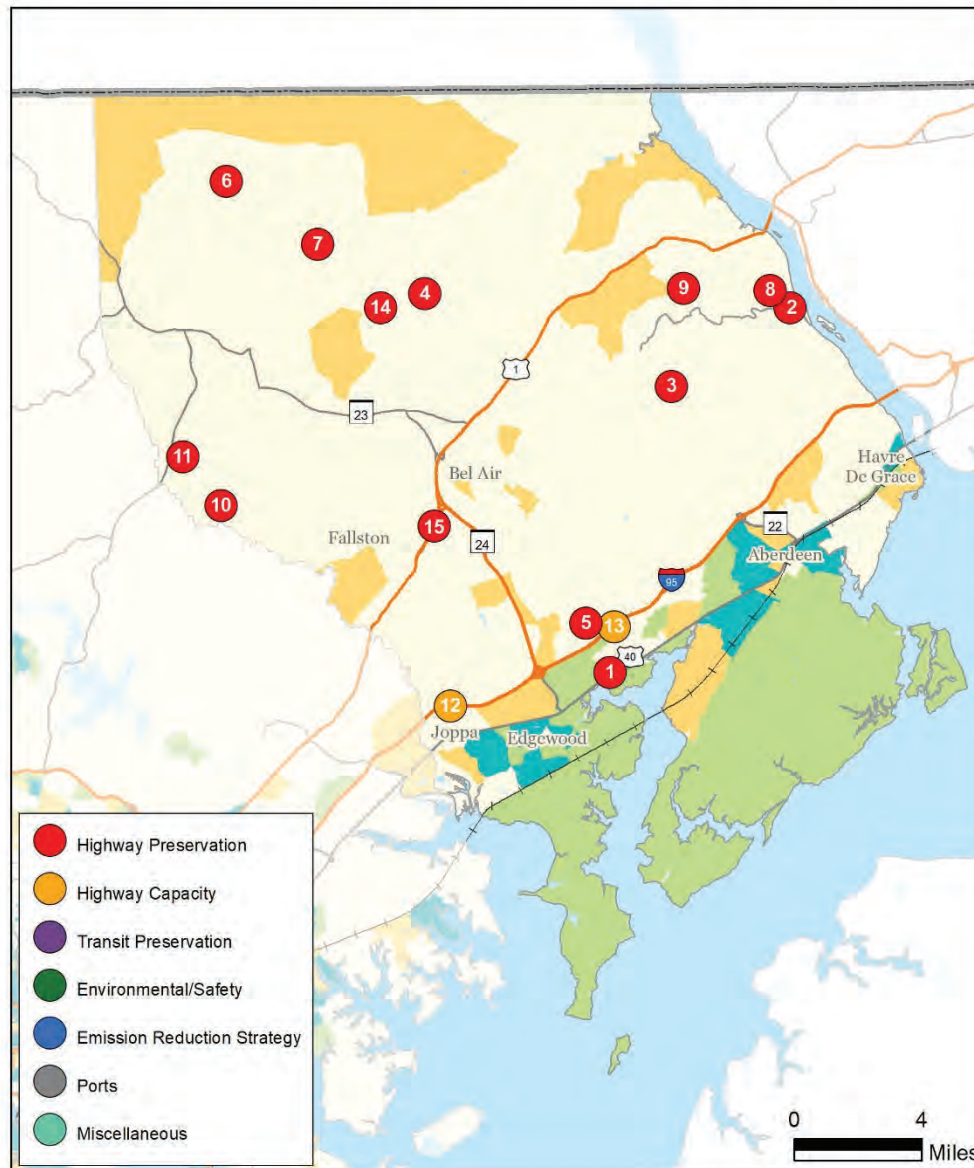
### Project Sponsor: MDOT State Highway Administration

10	MD 30 Business: North Woods Trail to CSX Railroad (Hampstead Community Safety & Enhancement)	64-1401-19
----	---	------------

- EJ TAZs: Minority Population Above Regional Average of 43.5%
- EJ TAZs: Household Poverty Above Regional Average of 9.9%
- EJ TAZs: Minority Population & Household Poverty Above Regional Average
- Non EJ TAZs: Minority Population & Household Poverty Below Regional Average

Transportation Analysis Zones (2010) show where the population that is non-white or Hispanic is higher than the regional average of 43.5% and where household poverty is higher than the regional average of 9.9% from the 2015-2019 American Community Survey 5-Year Estimates. Data shown for the Baltimore region only. Data Source: BMC, © HERE 2020, TIGER/Line®, MTA, U.S. Census, American Community Survey.

## Harford County Projects in Relation to Minority & Poverty Concentrations



### Project Sponsor: Harford County

1	Abingdon Road Bridge #169 over CSX Railroad	15-1001-13
2	Stafford Road Bridge #24 over Deer Creek	15-1501-13
3	Glenville Road Bridge #30 over Mill Brook	15-1601-13
4	Grier Nursery Road Bridge #43 over Deer Creek	15-2001-13
5	Hookers Mill Road Bridge #13 over Bynum Run	15-2002-13
6	Madonna Road Bridge #113 over Deer Creek	15-2101-13
7	St. Clair Bridge Road Bridge #100 over Deer Creek	15-2102-13
8	Stafford Road Bridge #162 over Buck Branch	15-2103-13
9	Trappe Church Road Bridge #161 over Hollands Branch	15-2104-13
10	Moore's Road Bridge #78 over a tributary to Gunpowder Falls	15-2201-13
11	Hess Road Bridge #81 over Yellow Branch	15-2202-13

### Project Sponsor: Maryland Transportation Authority

12	I-95 Express Toll Lanes Northbound Extension	25-1801-41
13	I-95 Southbound Part-Time Shoulder Usage	25-2101-41

### Project Sponsor: MDOT State Highway Administration

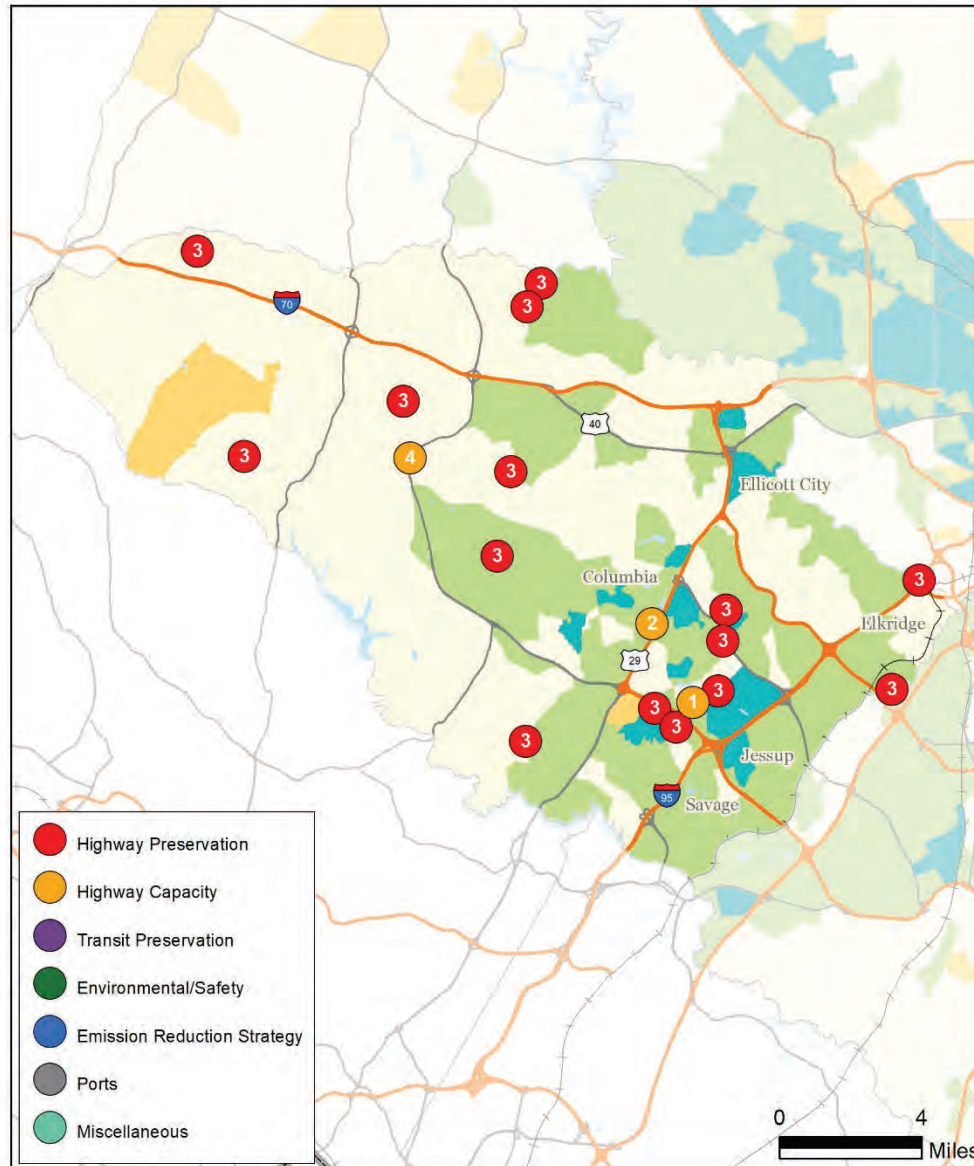
14	MD 24: South of Stirrup Run Culvert to Deer Creek Bridge, Section G	65-1601-12
15	US 1: Bridge Replacements at Tollgate Road and Winters Run	65-2101-13

- EJ TAZs: Minority Population Above Regional Average of 43.5%
- EJ TAZs: Household Poverty Above Regional Average of 9.9%
- EJ TAZs: Minority Population & Household Poverty Above Regional Average
- Non EJ TAZs: Minority Population & Household Poverty Below Regional Average

Transportation Analysis Zones (2010) show where the population that is non-white or Hispanic is higher than the regional average of 43.5% and where household poverty is higher than the regional average of 9.9% from the 2015-2019 American Community Survey 5-Year Estimates. Data shown for the Baltimore region only. Data Source: BMC, © HERE 2020, TIGER/Line®, MTA, U.S. Census, American Community Survey.



## Howard County Projects in Relation to Minority & Poverty Concentrations



### Project Sponsor: Howard County

1	Snowden River Parkway: Broken Land Parkway to Oakland Mills Road	16-1410-41
2	US 29/Broken Land Parkway Interchange and North South Connector Road	16-1901-42
3	Bridge Repair and Deck Replacement	16-0436-13

### Project Sponsor: MDOT State Highway Administration

4	MD 32: Linden Church Road to I-70, Capacity & Safety Improvements	66-1703-41
---	---	------------

- EJ TAZs: Minority Population Above Regional Average of 43.5%
- EJ TAZs: Household Poverty Above Regional Average of 9.9%
- EJ TAZs: Minority Population & Household Poverty Above Regional Average
- Non EJ TAZs: Minority Population & Household Poverty Below Regional Average

Transportation Analysis Zones (2010) show where the population that is non-white or Hispanic is higher than the regional average of 43.5% and where household poverty is higher than the regional average of 9.9% from the 2015-2019 American Community Survey 5-Year Estimates. Data shown for the Baltimore region only. Data Source: BMC, © HERE 2020, TIGER/Line®, MTA, U.S. Census, American Community Survey.

## Queen Anne's County Projects in Relation to Minority & Poverty Concentrations



Project Sponsor: MDOT State Highway Administration

1 MD 835C Sidewalk: Cockey Lane to Old Love Point Road 67-2101-03

- EJ TAZs: Minority Population Above Regional Average of 43.5%
- EJ TAZs: Household Poverty Above Regional Average of 9.9%
- EJ TAZs: Minority Population & Household Poverty Above Regional Average
- Non EJ TAZs: Minority Population & Household Poverty Below Regional Average

Transportation Analysis Zones (2010) show where the population that is non-white or Hispanic is higher than the regional average of 43.5% and where household poverty is higher than the regional average of 9.9% from the 2015-2019 American Community Survey 5-Year Estimates. Data shown for the Baltimore region only. Data Source: BMC, © HERE 2020, TIGER/Line®, MTA, U.S. Census, American Community Survey.