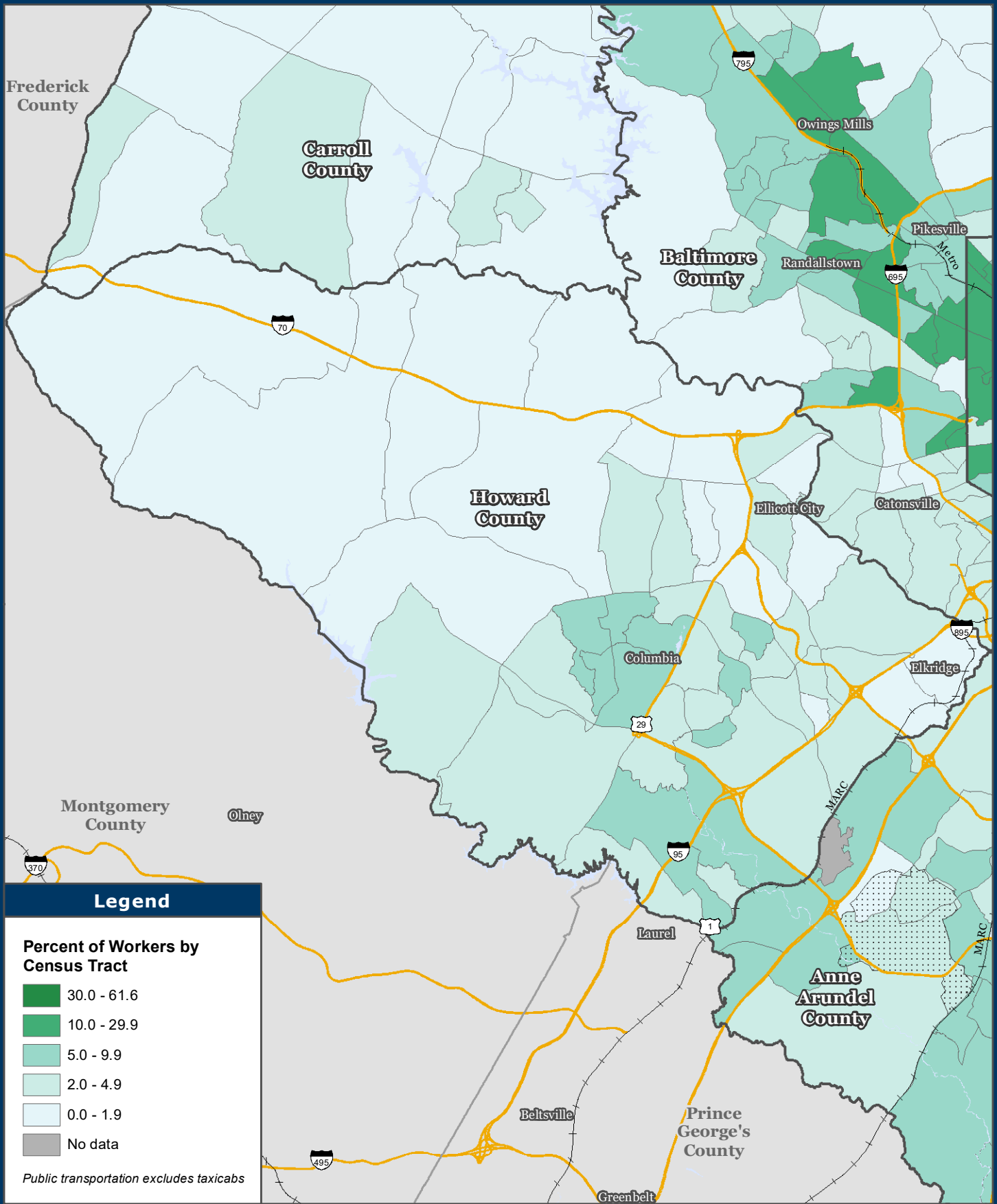


Workers Who Take Public Transportation to Work

U.S. Census Bureau 2015-2019 American Community Survey 5-Year Estimates



Legend

Percent of Workers by Census Tract

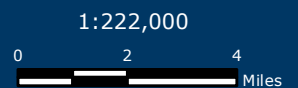
- 30.0 - 61.6
- 10.0 - 29.9
- 5.0 - 9.9
- 2.0 - 4.9
- 0.0 - 1.9
- No data

Public transportation excludes taxicabs



Baltimore Metropolitan Council
 1500 Whetstone Way, Suite 300
 Baltimore, MD 21230
www.BaltoMetro.org

Prepared by
 Transportation Planning Division
 Projected Coordinate System - NAD 1983 State Plane (ft)
 Data Source - BMC, © HERE 2020, TIGER/Line®, MTA
 June 2021



1 in = 3.5 miles