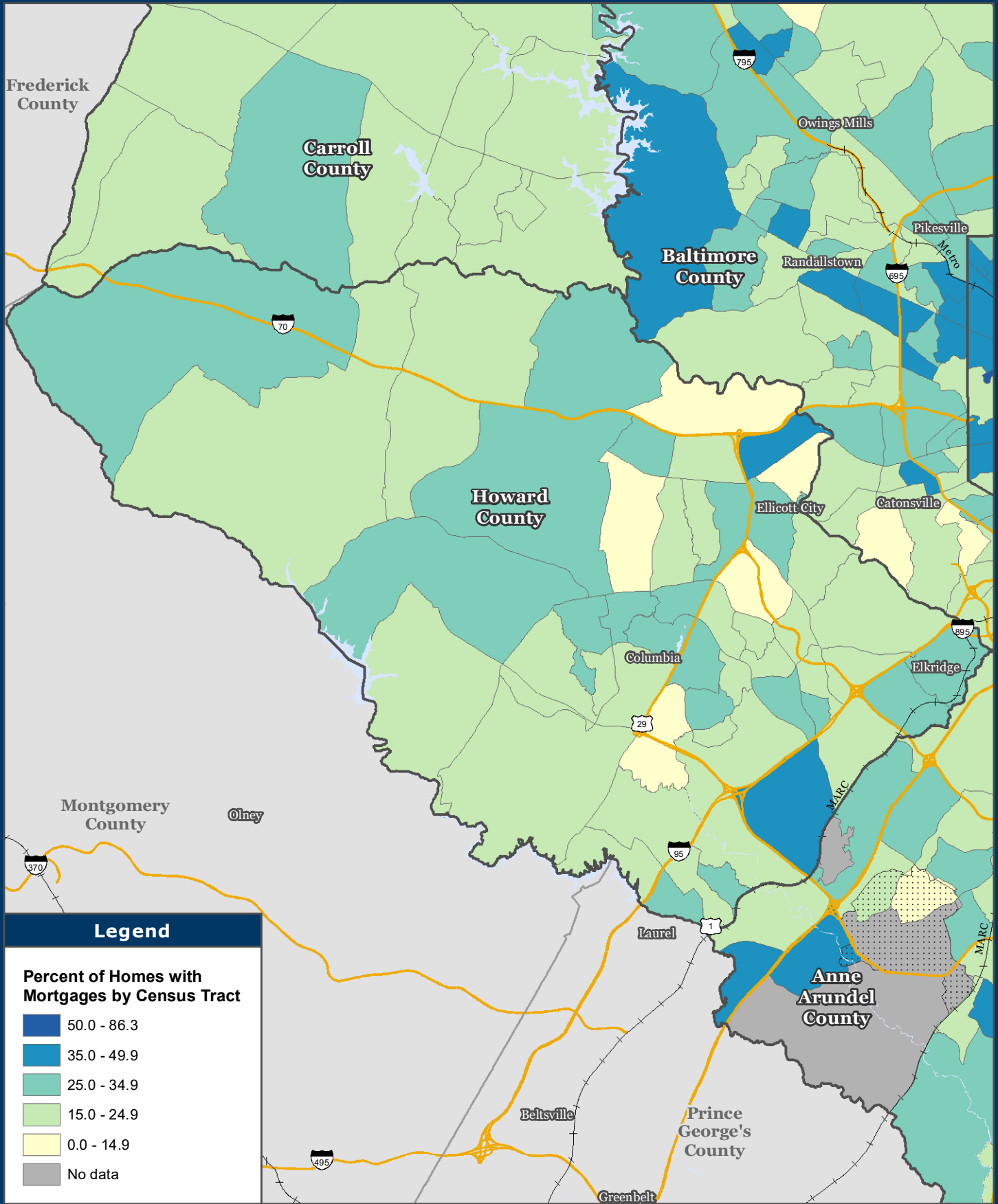


Homes Where Mortgage is More Than 30% of Income

U.S. Census Bureau 2015-2019 American Community Survey 5-Year Estimates



Legend

Percent of Homes with Mortgages by Census Tract

- 50.0 - 86.3
- 35.0 - 49.9
- 25.0 - 34.9
- 15.0 - 24.9
- 0.0 - 14.9
- No data



Baltimore Metropolitan Council
 1500 Whetstone Way, Suite 300
 Baltimore, MD 21230
www.BaltoMetro.org

Prepared by
 Transportation Planning Division
 Projected Coordinate System - NAD 1983 State Plane (ft)
 Data Source - BMC, © HERE 2020, TIGER/Line®, MTA
 June 2021



1:222,000
 0 2 4 Miles

1 in = 3.5 miles