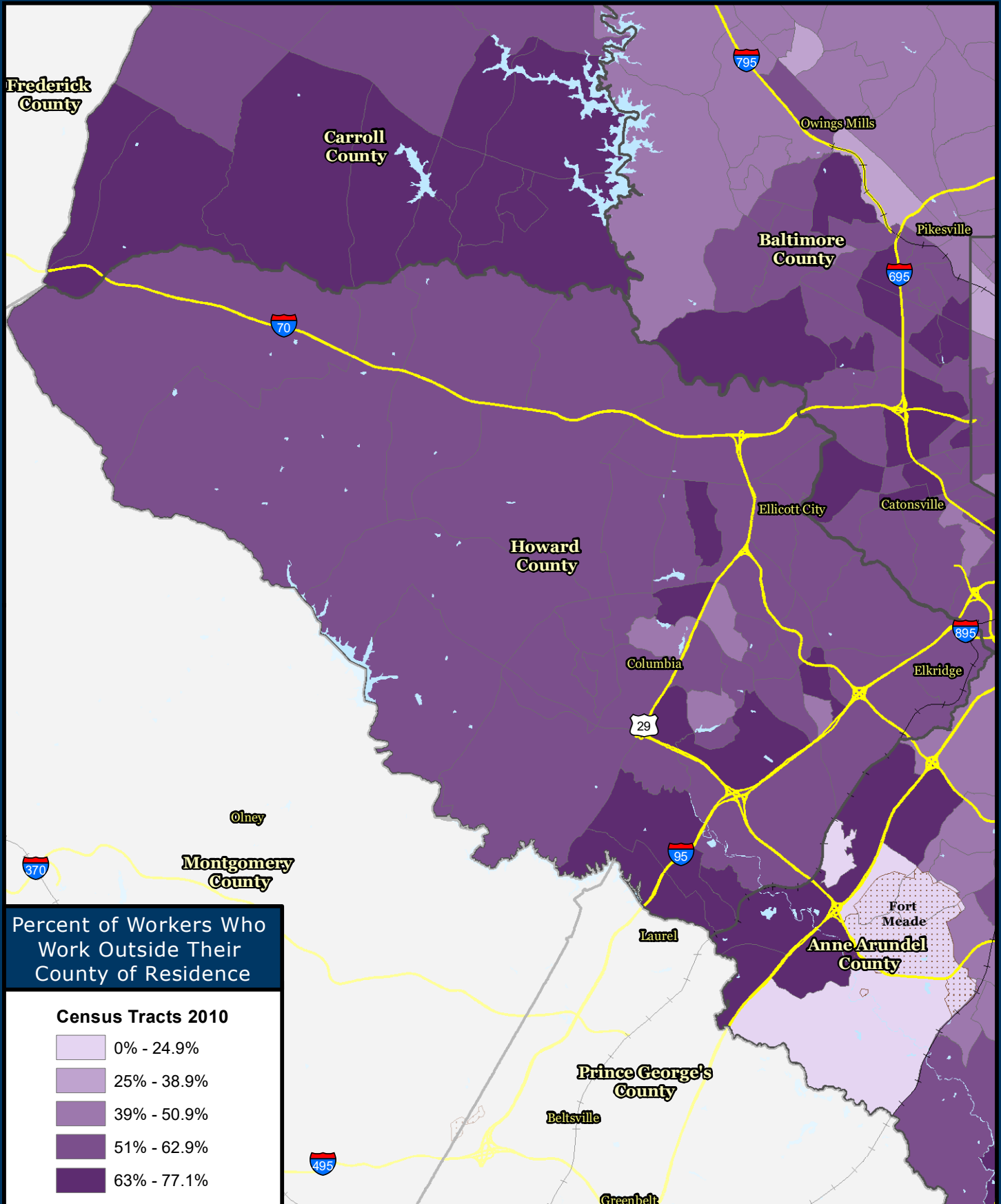


# Workers who Work Outside their County of Residence Howard County

Source: U.S. Census Bureau, 2012-2016 American Community Survey 5-Year Estimates



## Percent of Workers Who Work Outside Their County of Residence

### Census Tracts 2010

- 0% - 24.9%
- 25% - 38.9%
- 39% - 50.9%
- 51% - 62.9%
- 63% - 77.1%



**Baltimore Metropolitan Council**  
1500 Whetstone Way, Suite 300  
Baltimore, MD 21230  
[www.BaltoMetro.org](http://www.BaltoMetro.org)

Prepared by  
Transportation Planning Division  
Projected Coordinate System - NAD 1983 State Plane (ft)  
Data Source - BMC, © HERE 2017, TIGER/Line®, MTA  
American Community Survey 5-year Estimate  
Printed - July 2018



1:222,000  
0 3.5  
Miles

1 in = 3.5 miles