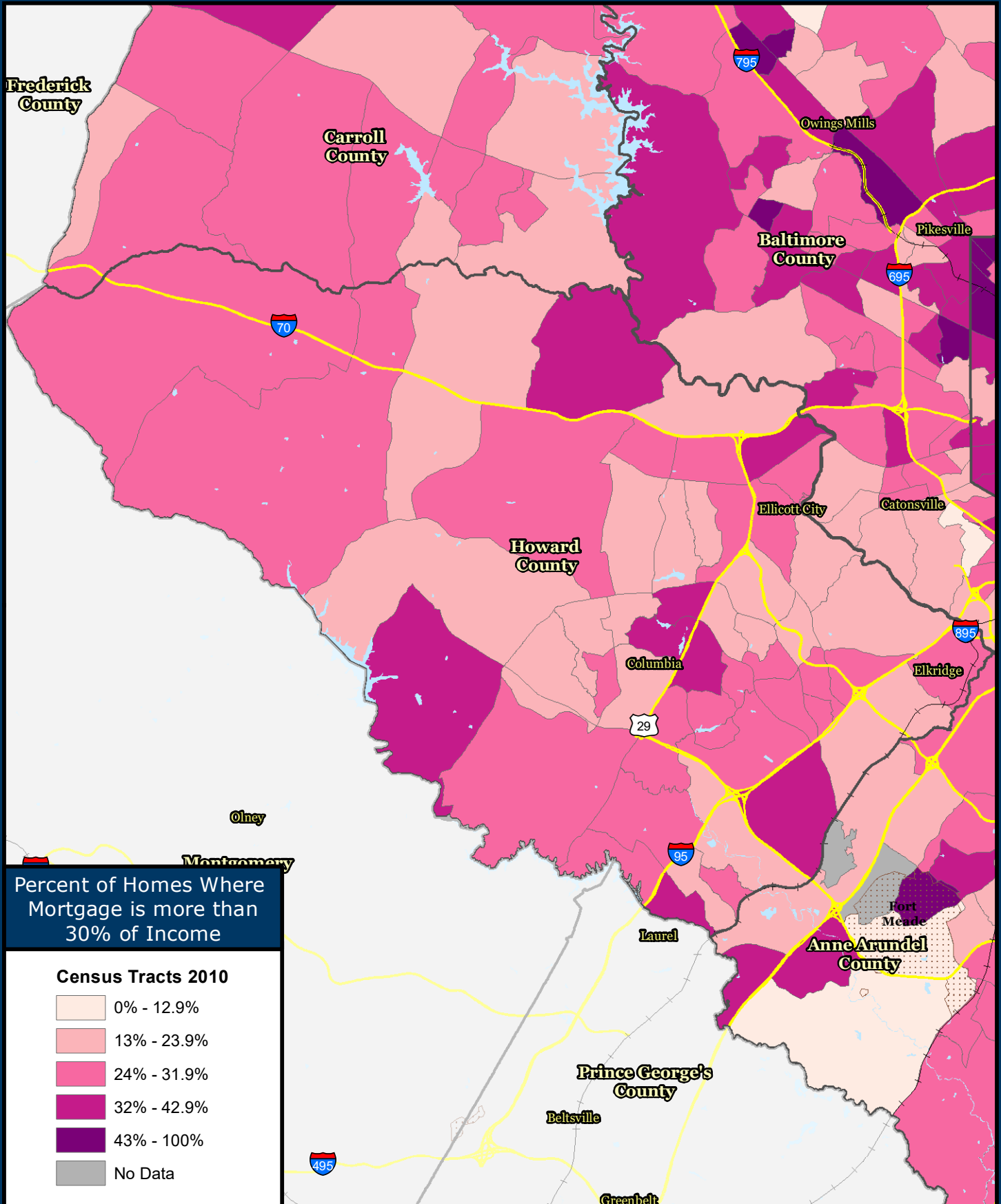


Homes with a Mortgage, Where Mortgage is more than 30% of Income Howard County

Source: U.S. Census Bureau, 2012-2016 American Community Survey 5-Year Estimates



Baltimore Metropolitan Council
1500 Whetstone Way, Suite 300
Baltimore, MD 21230
www.BaltoMetro.org

Prepared by
Transportation Planning Division
Projected Coordinate System - NAD 1983 State Plane (ft)
Data Source - BMC, © HERE 2017, TIGER/Line®, MTA
American Community Survey 5-year Estimate
Printed - July 2018



1:222,000
0 3.5
Miles

1 in = 3.5 miles