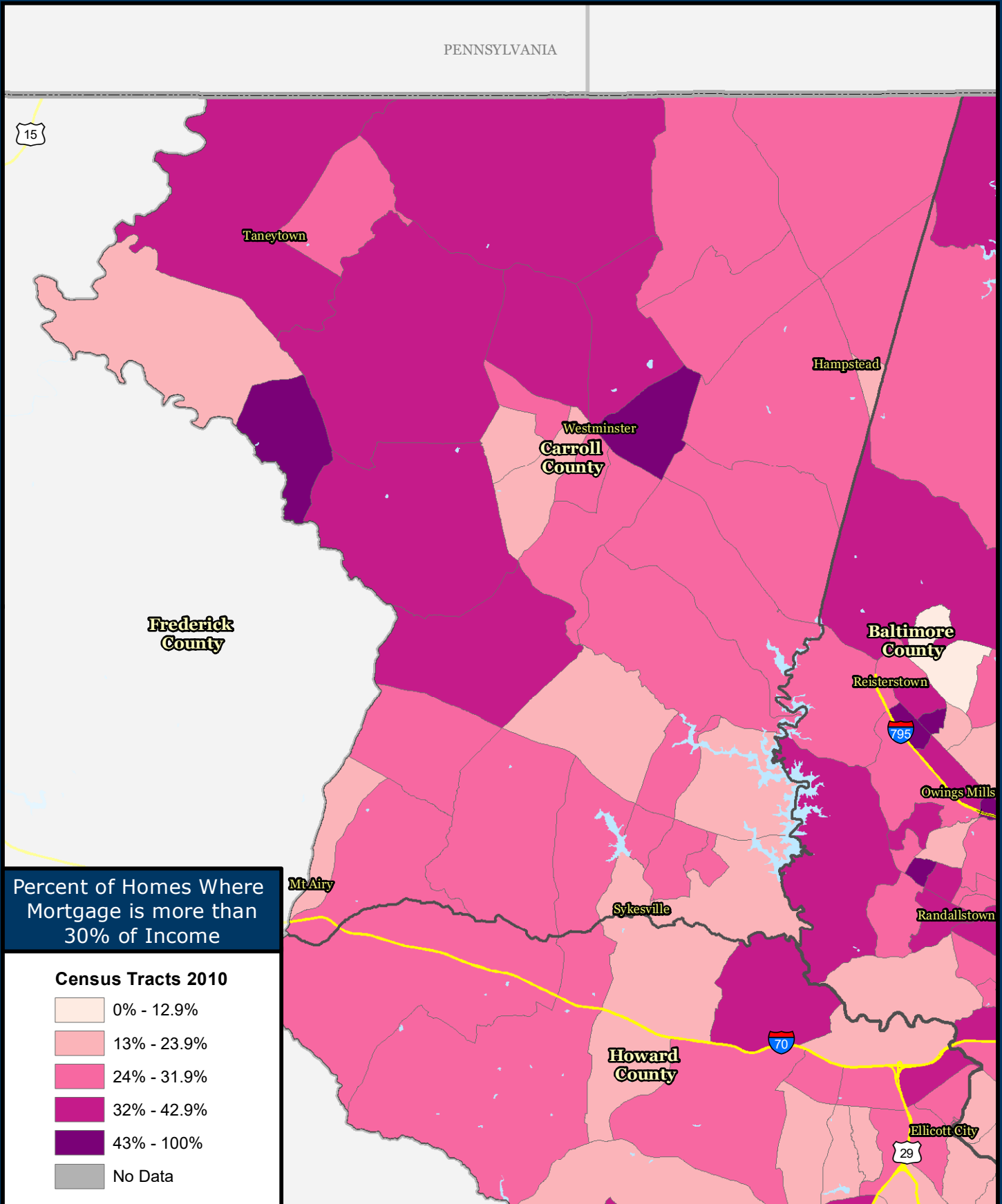


# Homes with a Mortgage, Where Mortgage is more than 30% of Income Carroll County

Source: U.S. Census Bureau, 2012-2016 American Community Survey 5-Year Estimates



Percent of Homes Where Mortgage is more than 30% of Income

**Census Tracts 2010**

- 0% - 12.9%
- 13% - 23.9%
- 24% - 31.9%
- 32% - 42.9%
- 43% - 100%
- No Data



**Baltimore Metropolitan Council**  
1500 Whetstone Way, Suite 300  
Baltimore, MD 21230  
[www.BaltoMetro.org](http://www.BaltoMetro.org)

Prepared by  
Transportation Planning Division  
Projected Coordinate System - NAD 1983 State Plane (ft)  
Data Source - BMC, © HERE 2017, TIGER/Line®, MTA  
American Community Survey 5-year Estimate  
Printed - July 2018



1:253,000  
0 4 Miles

1 in = 4 miles