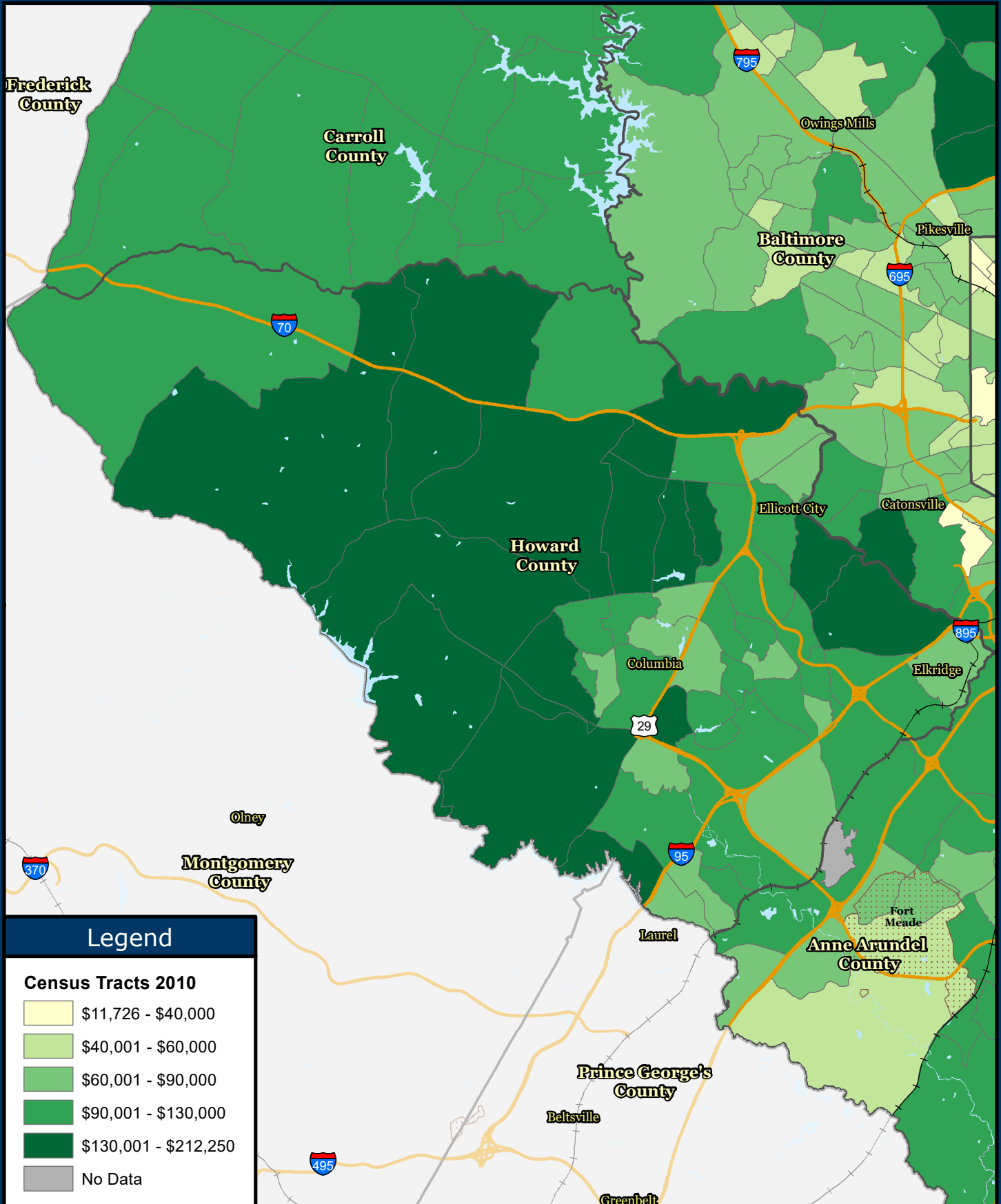


# Median Household Income, Howard County

Source: U.S. Census Bureau, 2012-2016 American Community Survey 5-Year Estimates



## Legend

### Census Tracts 2010

- \$11,726 - \$40,000
- \$40,001 - \$60,000
- \$60,001 - \$90,000
- \$90,001 - \$130,000
- \$130,001 - \$212,250
- No Data



**Baltimore Metropolitan Council**  
 1500 Whetstone Way, Suite 300  
 Baltimore, MD 21230  
[www.BaltoMetro.org](http://www.BaltoMetro.org)

Prepared by  
 Transportation Planning Division  
 Projected Coordinate System - NAD 1983 State Plane (ft)  
 Data Source - BMC, © HERE 2017, TIGER/Line®, MTA  
 American Community Survey 5-year Estimate  
 Printed - July 2018



1:222,000  
 0 3.5  
 Miles

1 in = 3.5 miles