



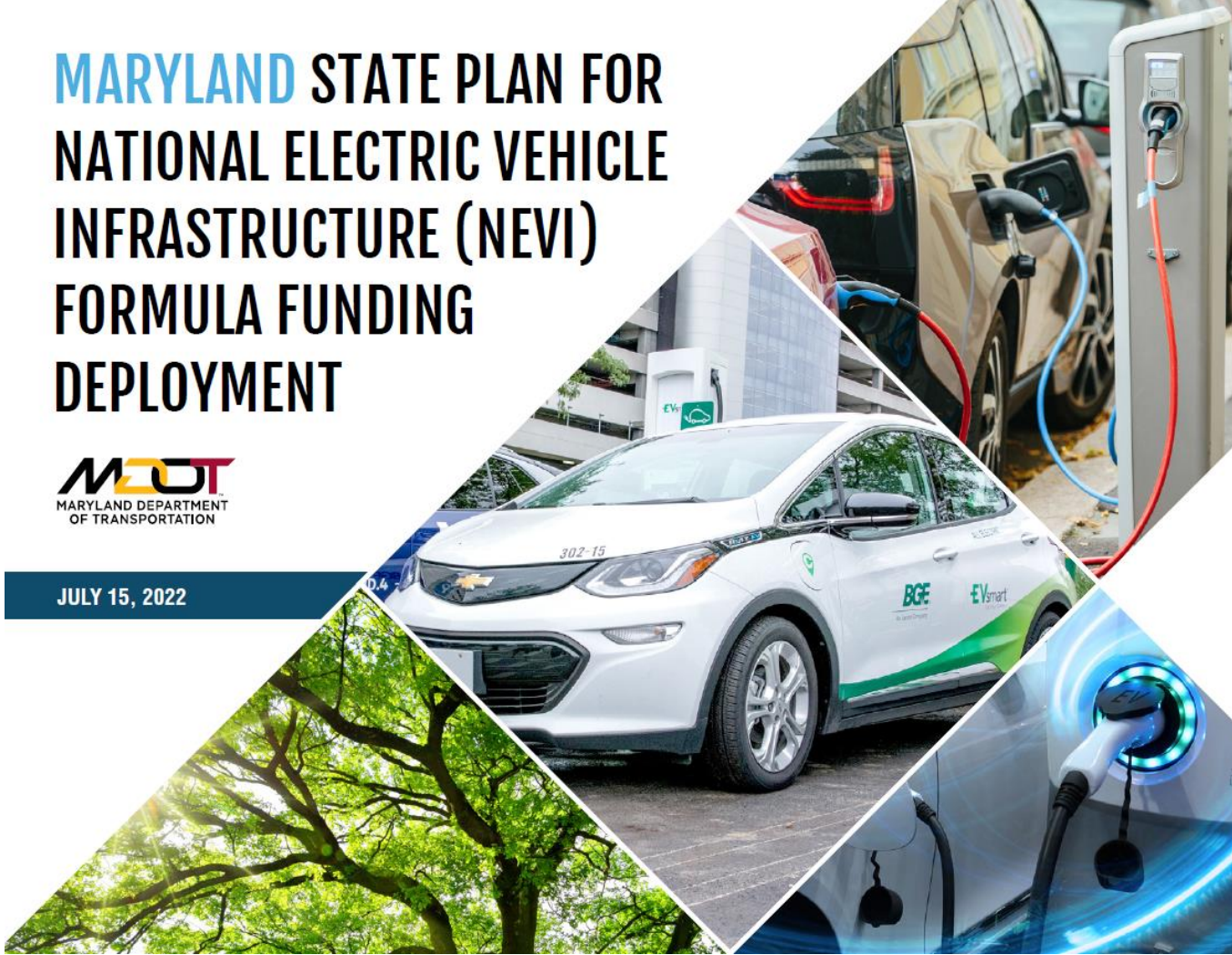
MARYLAND
ZERO EMISSION
Vehicle Infrastructure Plan

NEVI BACKGROUND

MARYLAND STATE PLAN FOR NATIONAL ELECTRIC VEHICLE INFRASTRUCTURE (NEVI) FORMULA FUNDING DEPLOYMENT



JULY 15, 2022



- All states submitted plans to the Joint Office by August 1, 2022 (MD was the second (July 15))
- **\$57,500,000** for investment in Maryland (after set-asides)
- **MEA Coordination**
- **Maryland Goals:**
 1. Certify Corridors
 2. Invest in Communities per **ZEEVIC**

What are ZEVIP and NEVI?

Maryland Zero Emission Vehicle Infrastructure Plan (ZEVIP)

WE ARE HERE

NEXT STEP

NEVI FORMULA FUNDING

- Plan Required by 8/1
- Unlocks ~\$60M in MD
- Must use on AFCs 1st then Communities
- Submitted Annually

NEVI PROGRAM

- High-Level in Plan
- Details are Developing on Administration and Application

DISCRETIONARY \$ for ZEV

- \$2.5B of the \$7.5B under BIL
- \$1.25B for Corridor ZEV infrastructure along AFCs (EV, hydrogen, propane, natural gas)
- \$1.25B for Community ZEV infrastructure
- Guidance Est. Late 2022

OTHER STATE PROGRAMS

- VW Settlement
- Clean Fuels Technical Assistance Program
- MD Smart Energy Communities
- Solar Canopy Grant Program
- MEA EVSE Program

OTHER FUNDING

Other Federal

- DOT
- DOE
- EPA

Private / Other

- Site Hosts
- Network Companies
- PSC Pilot Program / Utility Investment

NEVI Plan Components



Introduction



State Agency
Coordination



Public
Engagement



Plan Vision &
Goals



Contracting



Existing &
Future
Conditions



EVSE
Deployment



Implementation



Civil Rights



Equity
Considerations



Labor &
Workplace
Considerations



Cybersecurity



Program
Evaluation



Discretionary
Exceptions

Engagement & Outreach



Utilities



**Network
Companies**

[EV Charging Manufacturers]



**Disadvantaged /
Rural
Communities**



**OEM's /
Automakers**

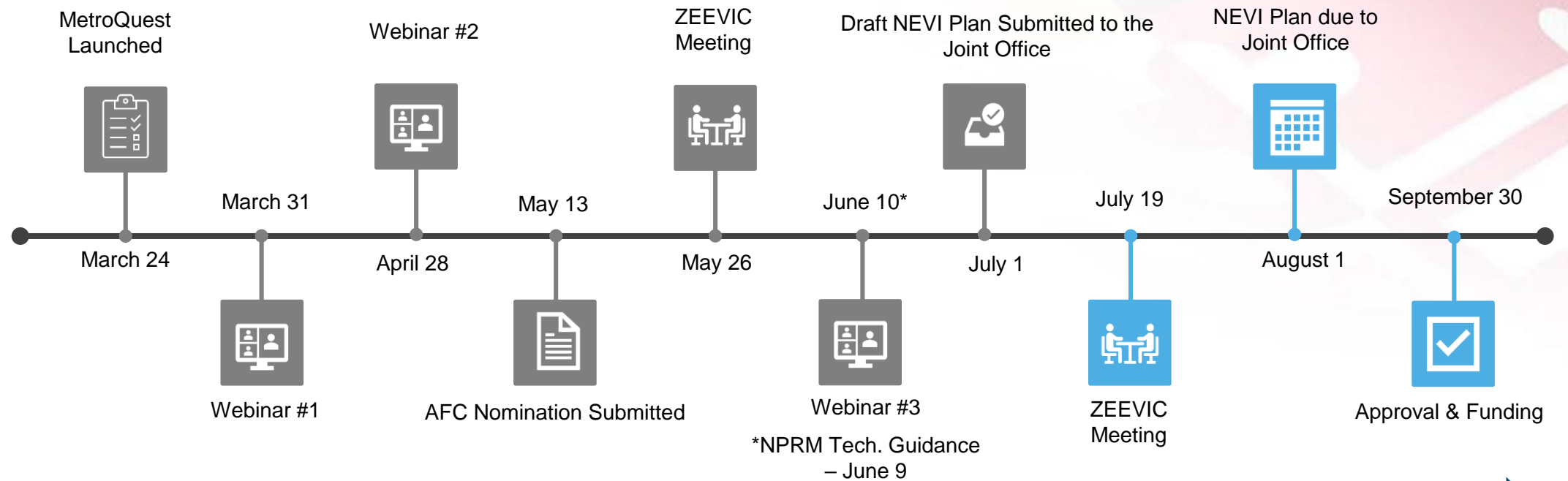


**Local Governments
and Planning Partners**



**Potential EV
Charging Site
Hosts**

NEVI Schedule (Subject to Change)



Risks & Challenges

Supply Chain

Equity Barriers

Emergency Management

Compatibility

ADA Accessibility

Grid Capacity

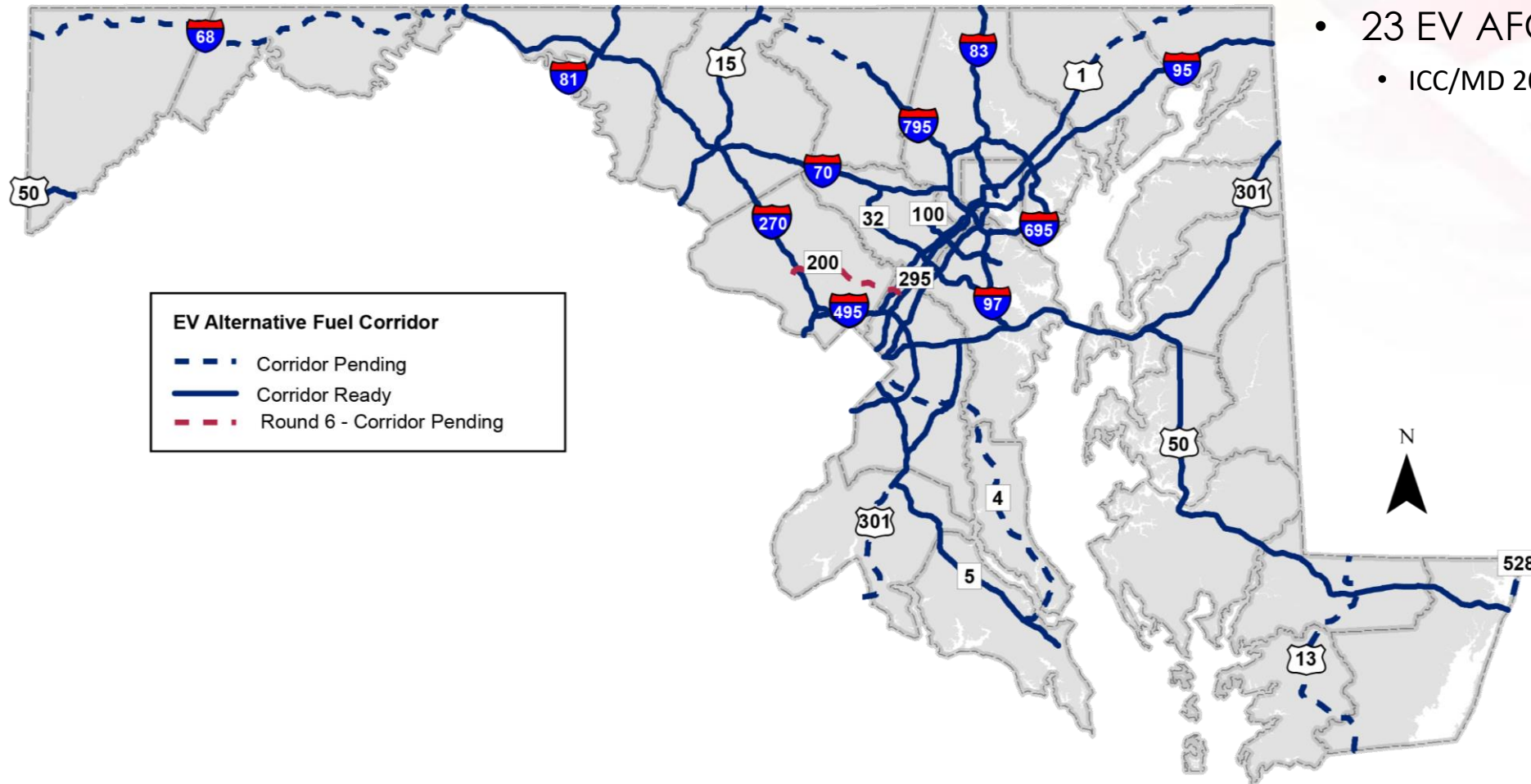
Public Education

Reliability

Workforce Development

Climate Change

EV Alternative Fuel Corridor



- 23 EV AFC Designations
 - ICC/MD 200 designated as part of Round 6

Pending Round 6 Alternative Fuel Corridors

Maryland Department of Transportation

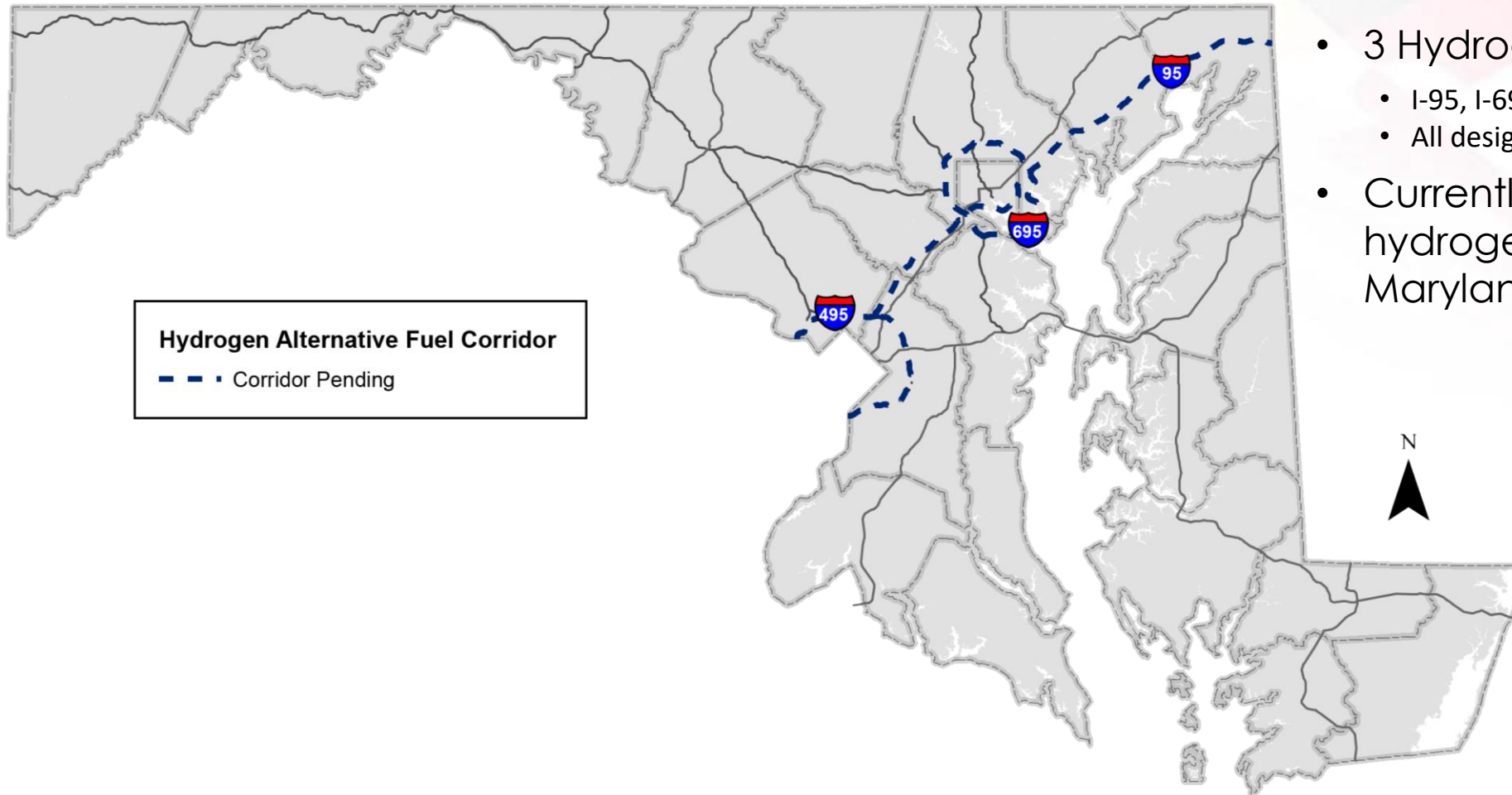
EV

- ICC-MD 200: Between the ICC-MD 200/US-1 intersect in Beltsville and the ICC-MD 200/I-270 interchange in Gaithersburg

H2

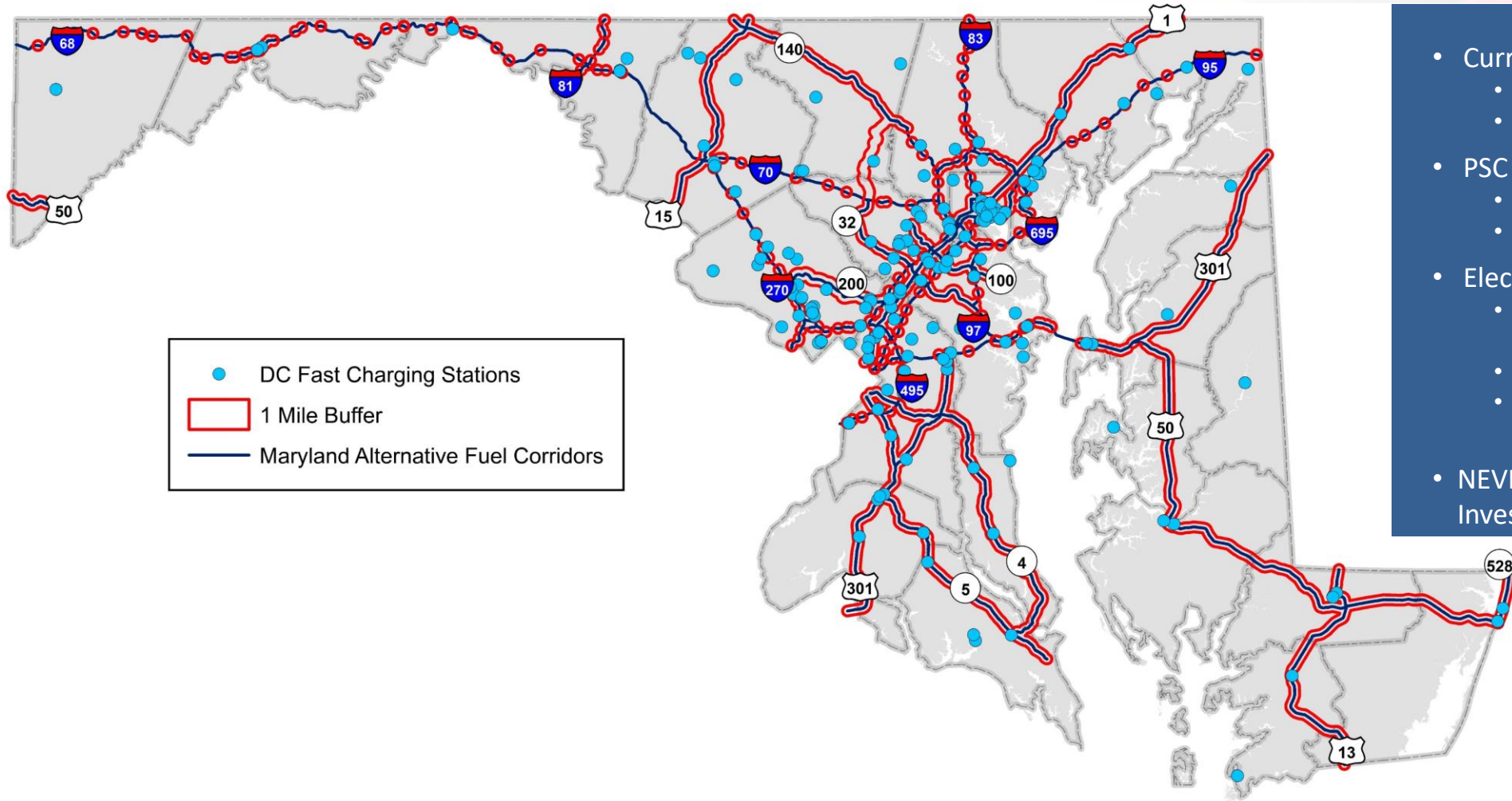
- I-95: Between the MD/VA border and the MD/DE border
- I-495: Between the MD/VA border (near Cabin John) to the MD/VA border (near Alexandria, VA)
- I-695: Entire loop

Hydrogen Alternative Fuel Corridor



- 3 Hydrogen AFC Designations
 - I-95, I-695, & I-495
 - All designated as “Corridor-Pending”
- Currently, there are no hydrogen fueling stations in Maryland

EXISTING MAP OF ALL DC FAST STATIONS



Investments in Maryland

- Current EVSEs:
 - 220 DC Fast Locations
 - 676 Charging Ports
- PSC Pilot Program
 - Install over 960 EVSEs
 - 53 Active DC Fast Locations
- Electrify America
 - DC/Baltimore Charging Identified as priority
 - 15-20 Existing DC Fast Sites
 - 2 more DC Fast Planned – Eastern Shore & Western MD
- NEVI is like an 80% Discount for Investors

Critical Considerations

- Resiliency
 - Floodplain
- Amenities
 - Restrooms | Food/Dining/Retail | Lighting | Other Services
- Utility Providers / Grid Capacity
- Innovations
 - Solar | Storage | Mobile Charging
- Cost
 - Competitive Pricing
 - Matching Considerations
- Supports greater deployment efforts
 - Corridor AND Community Charging



Fully solar-powered EV charging station deployed for CALtrans.

Site Information Tool – Disadvantaged/Rural Communities

ZEVIP Site Information Tool

Find address or place

50 500 ft 5,000

NEVI Information by Census Tract

Use the Search Bar to obtain a Maryland NEVI Score.

If you place your cursor in the search bar, a drop-down will appear to use your current location. You can also click anywhere on the map to choose a specific location.

Additionally, there is a location radius between zero to one mile. You can change the radius by sliding the blue circle to your desired radius.

Once you select a location, your results will be summarized directly below the radius line. You can export your results by clicking the PDF icon. If this button does not work in a specific browser, it should work by opening the content in a new tab. You can do so by clicking the square with the arrow in the top right-hand corner of the map.

There are five buttons on the right-hand side of the map. A detailed list is shown below.

The Home Button will clear any current searches and the map will appear empty as it did before any searches occurred.

The Plus and Minus allow you to zoom in and out of the map.

The Legend summarizes map colors and pins as they relate to the scoring and charging location details.

Find My Location will automatically select and highlight your current location on the map.

Map of Maryland showing NEVI scores by census tract. The map is color-coded: green for scores 1-2, yellow for 3-4, orange for 5-6, and red for 7-8. Major cities like Baltimore, Washington D.C., and Annapolis are visible. The map includes a search bar, a radius slider, and a legend.

// DISCLAIMER: This Location Based tool serves as a guide to help pinpoint potential charging locations. Your score does not guarantee funding for a charging location. In addition, lower scores do not mean that funding is not possible.

//

Objective Driven Scoring Criteria

Environmental Justice		Transportation		Land Use/Overlays		Electric Vehicles/Existing Infrastructure	
Layer Name	Score	Layer Name	Score	Layer Name	Score	Layer Name	Score
Overall Score (UMD/MDE -EJSCREEN)		Distance to Highway		Transit Oriented Developments		Optimal Stations (Gov. Survey)	
Top 90th Percentile	8	Within 1 Mile Buffer	10	Yes	1	Yes	1
75th-89th Percentile	6	>1 Mile Buffer	0	No	0	No	0
50th-74th Percentile	4	EV Alternative Fuel Corridor		Priority Funding Area		ZEVIP MetroQuest Survey (within Census Tract)	
<49th Percentile	0	Interstate	4	Yes	1	5-16 Selected Locations	3
Designated Rural Area		US Route	2	No	0	2-4 Selected Locations	2
Yes	6	State Route	1	Maryland Sustainable Communities		1 Selected Location	1
No	0	VMT/AADT		Yes	1	0 Selected Locations	0
Justice 40		Rank 1	3	No	0	EV Stations within Census Tract	
Yes	2	Rank 2-4	2	Land Uses - 2010		7-39 EV Stations	2
No	0	Rank 5	1	High Density Residential		1-6 EV Stations	1
Historical Disadvantage Communities				Medium Density Residential		0 EV Stations	0
Yes	2			Low/Very Low Density Residential		Density of EV Owners	
No	0			Commercial		>300	4
Overall Score (CDC SVI)				Institutional		150<->300	3
> 0.75	2			Industrial		76<->150	2
< 0.75	0			Other		1<->75	1
						0	0

Program Development

- Competitive Grant Program
 - Administered by MDOT
- Short-Term Focus: AFCs
- Long-Term Focus: Communities

40-45 Sites to Build-Out AFCs
\$350K - \$1 Million per site

DRAFT NEVI Formula Funding Program Allocations by Maryland Fiscal Year [July 1 – June 30]							
Funding Category	2023 ²	2024	2025	2026	2027	Total	% of Total
Planning and Staffing	\$500,000	\$500,000	\$500,000	\$500,000	\$500,000	\$2,500,000	4%
Installation ¹	\$4,250,000	\$16,250,000	\$11,500,000	\$11,500,000	\$11,500,000	\$55,000,000	96%
Total	\$4,750,000	\$16,750,000	\$12,000,000	\$12,000,000	\$12,000,000	\$57,500,000³	

Contact Information



Dan Janousek

Maryland Department of Transportation

Email: djanousek@mdot.maryland.gov

<https://evplan.mdot.maryland.gov/>

