

# **Bureau of Transportation Statistics**

**Transportation Data and Analysis Products**

**BRTB Technical Committee / Interagency Consultation Group  
July 1, 2025**



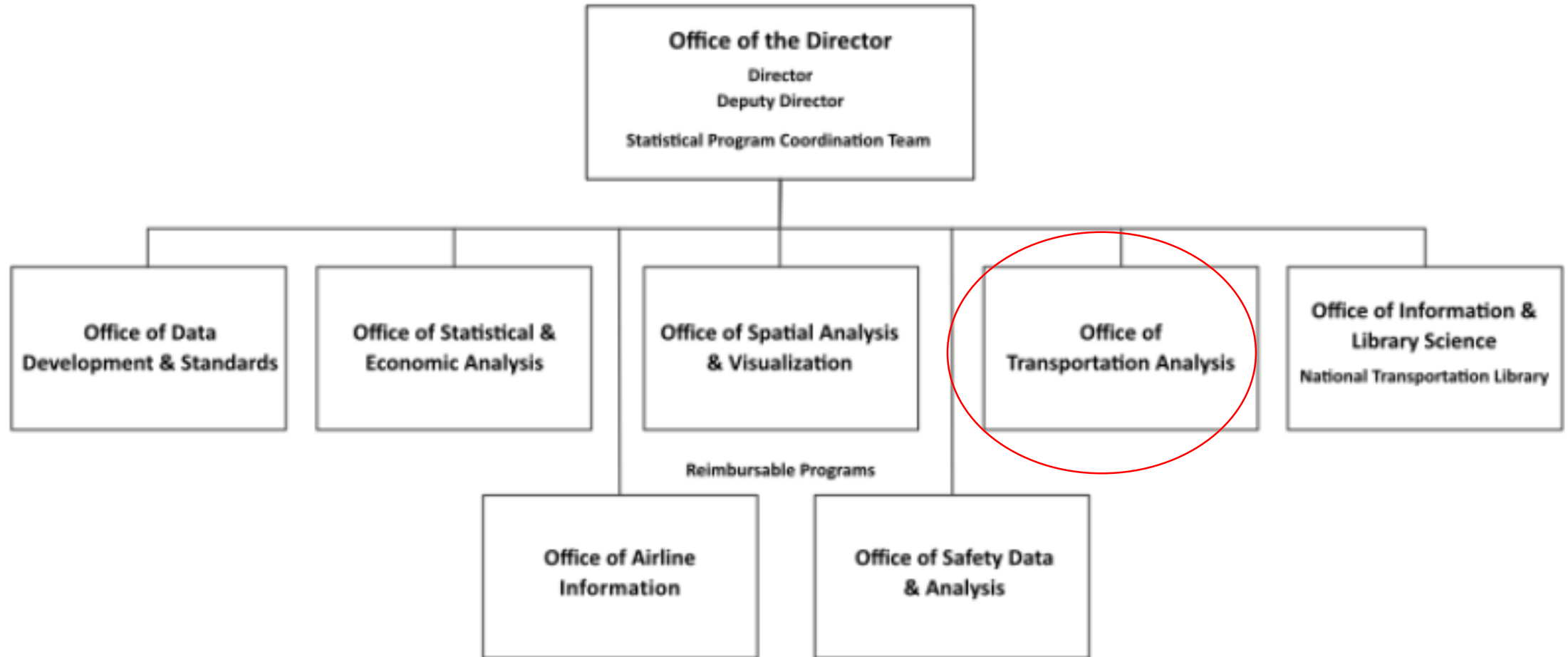
U.S. Department of Transportation  
Office of the Secretary of Transportation

**Bureau of Transportation Statistics**

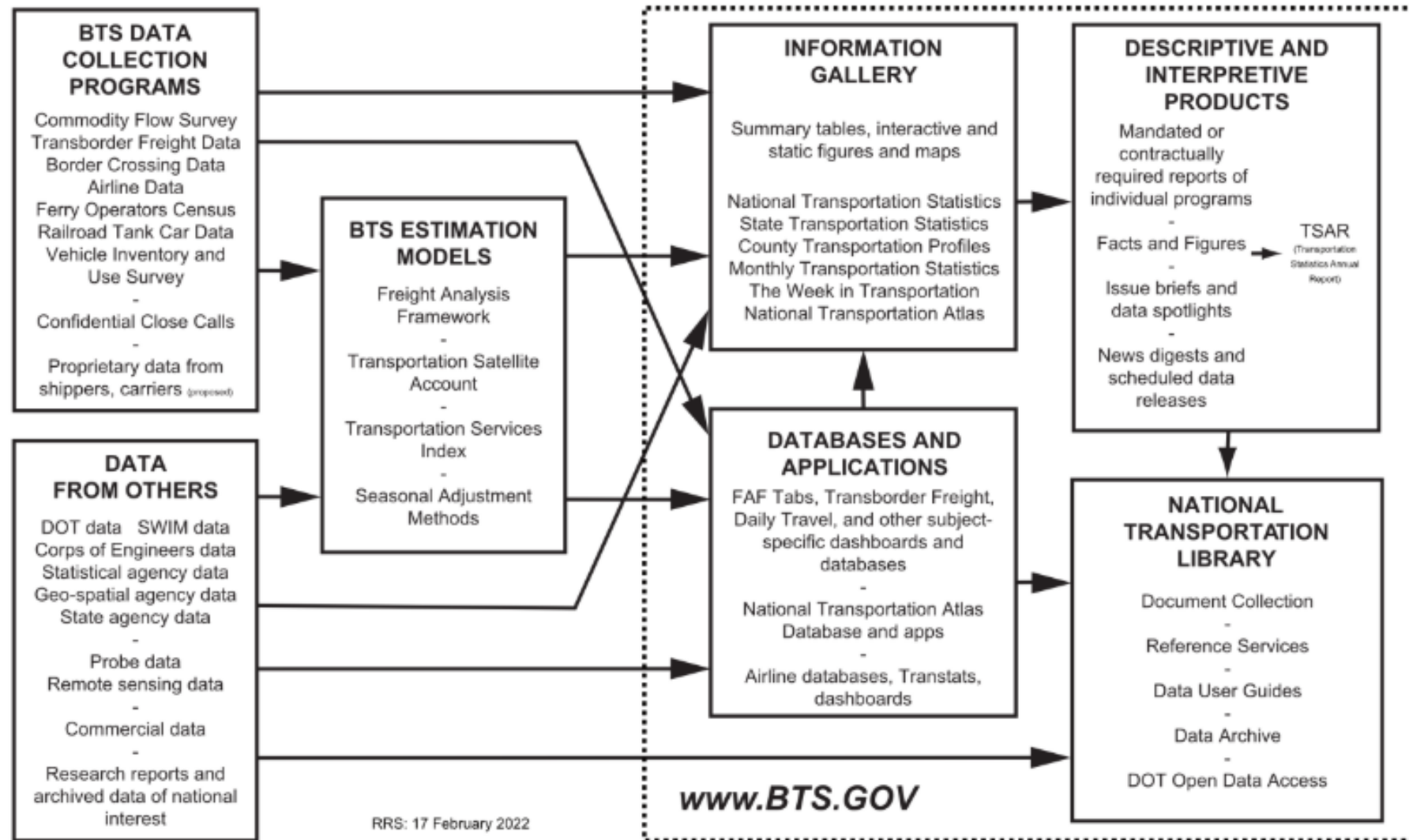
# **The Bureau of Transportation Statistics**

- Provides timely, accurate, credible information on the U.S. transportation system, the movement of people and goods, and the consequences of transportation for the economy, society and the environment.
- Is the preeminent source of statistics on commercial aviation, multimodal freight, and transportation economics.
- Provides context to decision makers and the public for understanding statistics on transportation.

# ORGANIZATION CHART



## BTS INFORMATION FLOW



# Legislative Mandates

[Chapter 63 of Title 49, United States Code,](#)

[Section 329 of Title 49, United States Code,](#)

[A note to Section 129 of Title 23, United States Code,](#)

[A note to Section 20155 of Title 49, United States Code,](#)

[Foundations of Evidence-based Policymaking Act of 2018](#)

[Fundamental Responsibilities of Recognized Statistical Agencies and Units \(the Trust Regulation\)](#)

[Statistical policy directives of the Office of Management and Budget](#)

[Section 25003 of the Investment in Infrastructure and Jobs Act of 2021](#)

# Data Products- Analysis Tools

National Transportation Statistics

Transportation Statistics Annual Report

National Transportation Statistics

State Transportation Statistics

State by the Numbers

Freight Facts and Figures

Pocket Guide to Transportation

# Data Products- Analysis Tools

Passenger Travel Facts and Figures

Port Performance

TransBorder Freight Data

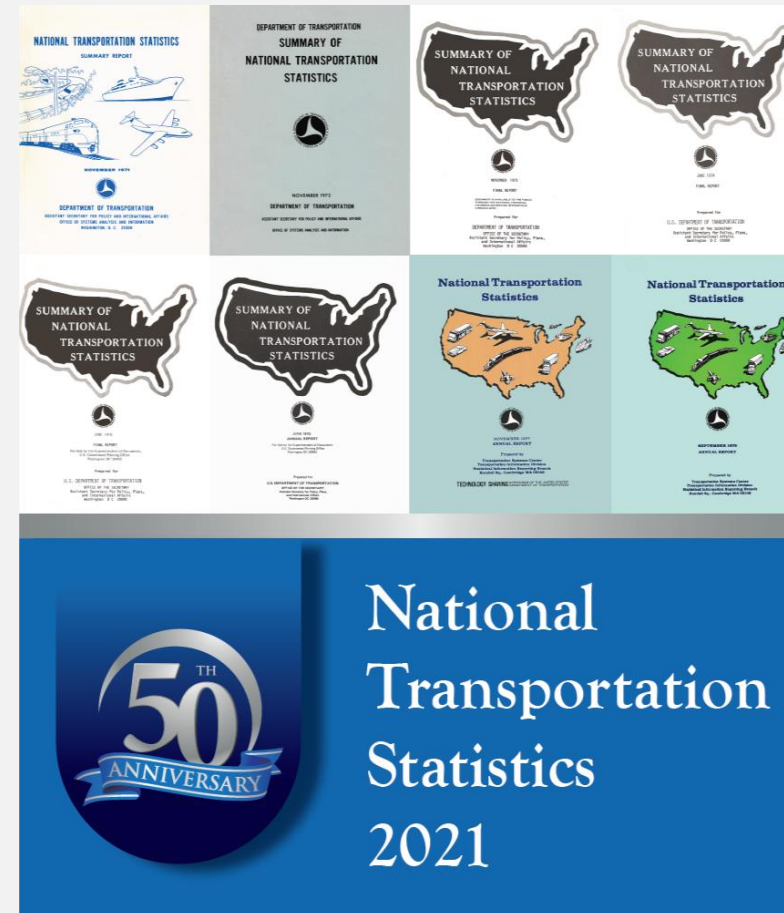
Border Crossing

Aviation Facts and Figures

Preliminary Estimates

# National Transportation Statistics

- National Transportation Statistics (NTS) has more than 250 data tables on the U.S. transportation system, including its physical components, safety record, economic performance, the human and natural environment, and national security.
- [www.bts.gov/nts](http://www.bts.gov/nts)





# National Transportation Statistics (NTS)

- Section 4 of the National Transportation Statistics (NTS) has over 50 data tables on Energy and Natural Environment.

[Section 4.A - U.S. Transportation Sector Energy Consumption](#)

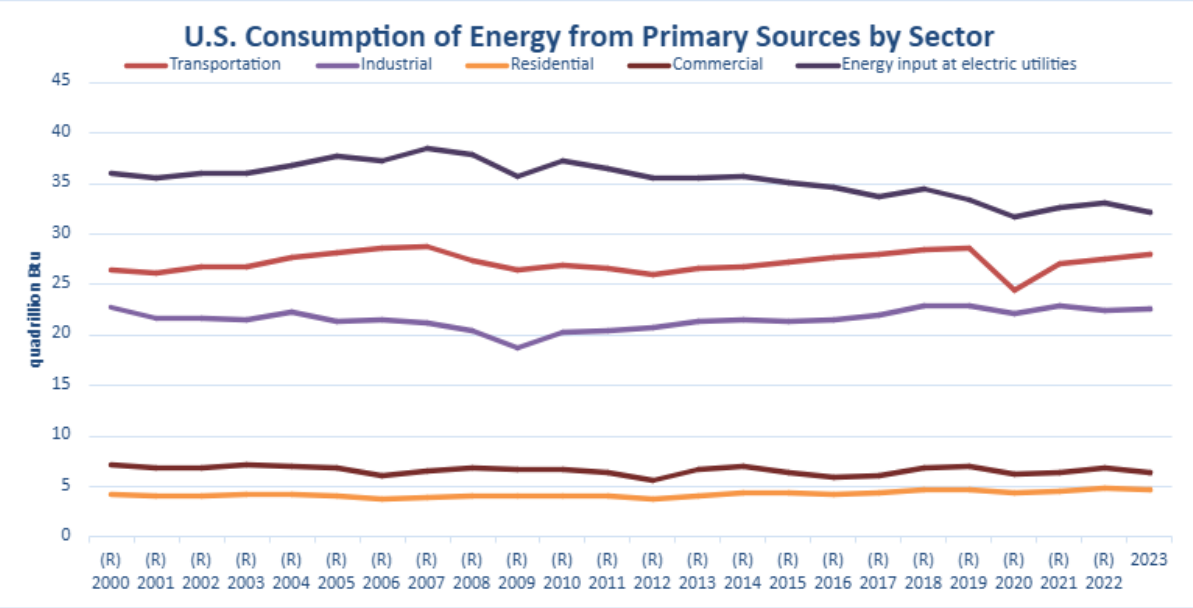
[Section 4.B - Transportation Energy Consumption By Mode](#)

[Section 4.C - Transportation Energy Intensity and Fuel Efficiency](#)

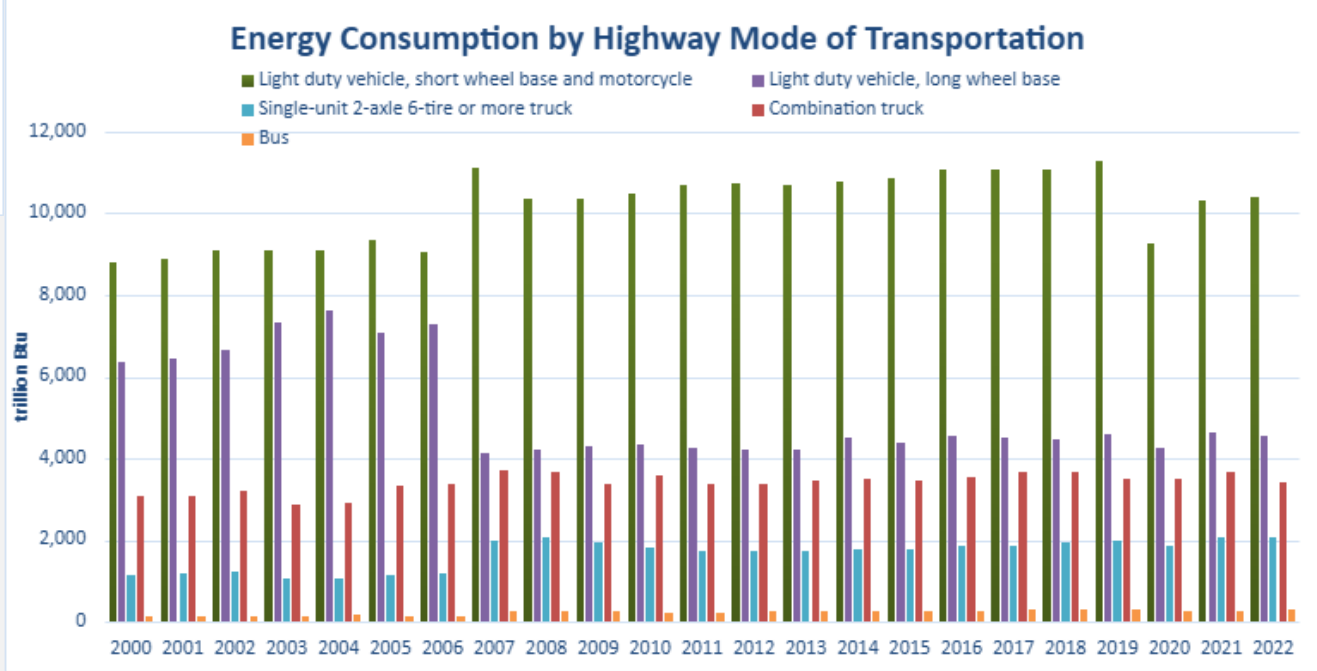
[Section 4.D - Air Pollution](#)

[Section 4.E - Water Pollution, Noise, and Solid Waste](#)

# National Transportation Statistics (NTS)

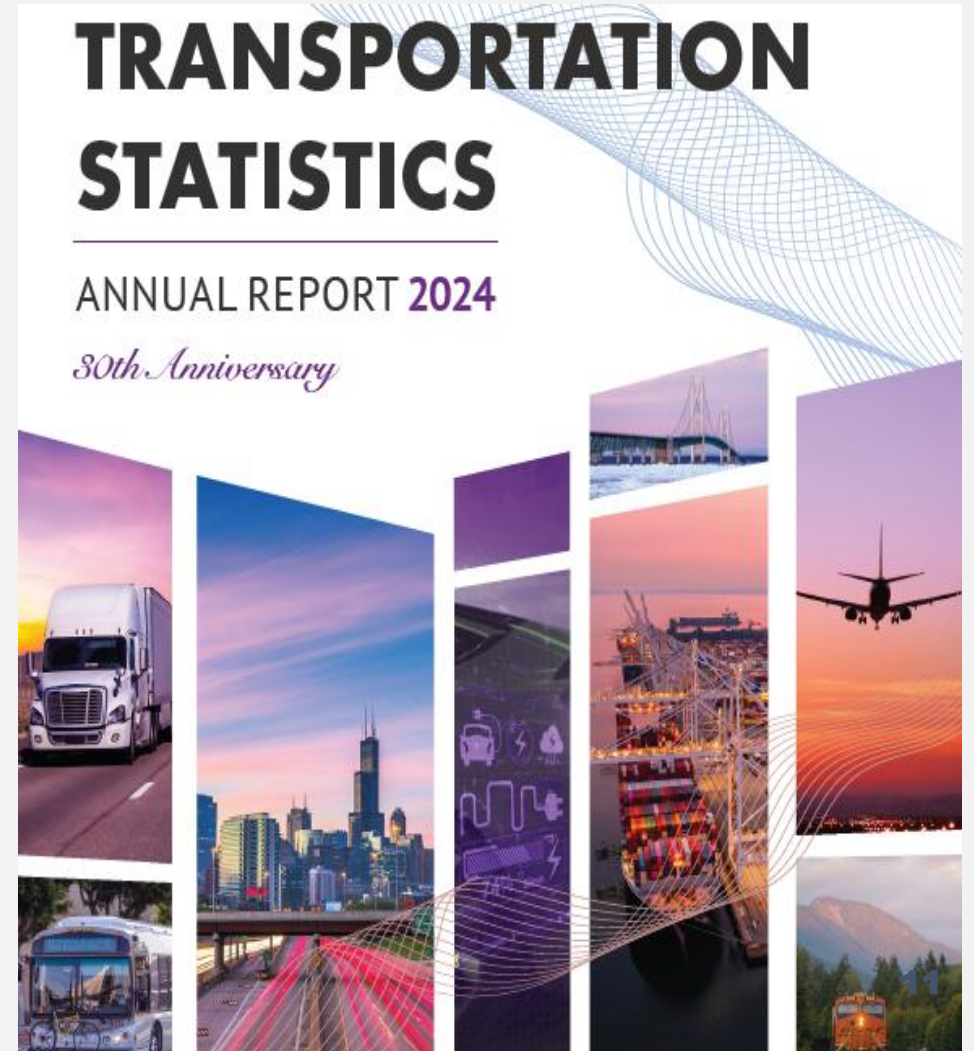


Bureau of Transportation Statistics



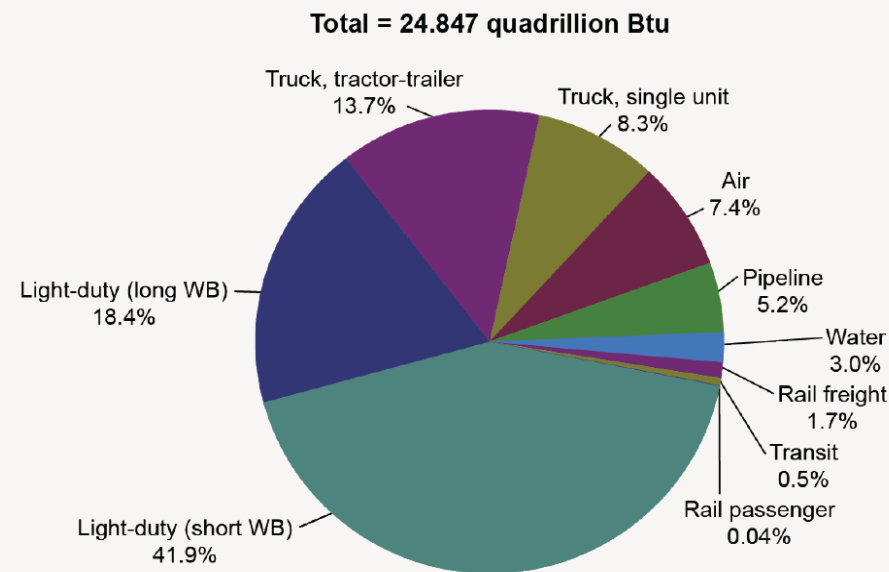
# Transportation Statistical Annual Report (TSAR)

- The Transportation Statistics Annual Report (TSAR) presents an overview of the U.S. transportation system and key indicators, including data and statistics.
- <https://www.bts.gov/tsar>



# Transportation Statistical Annual Report (TSAR)

Figure 6-2 Transportation Energy Use by Mode: 2022

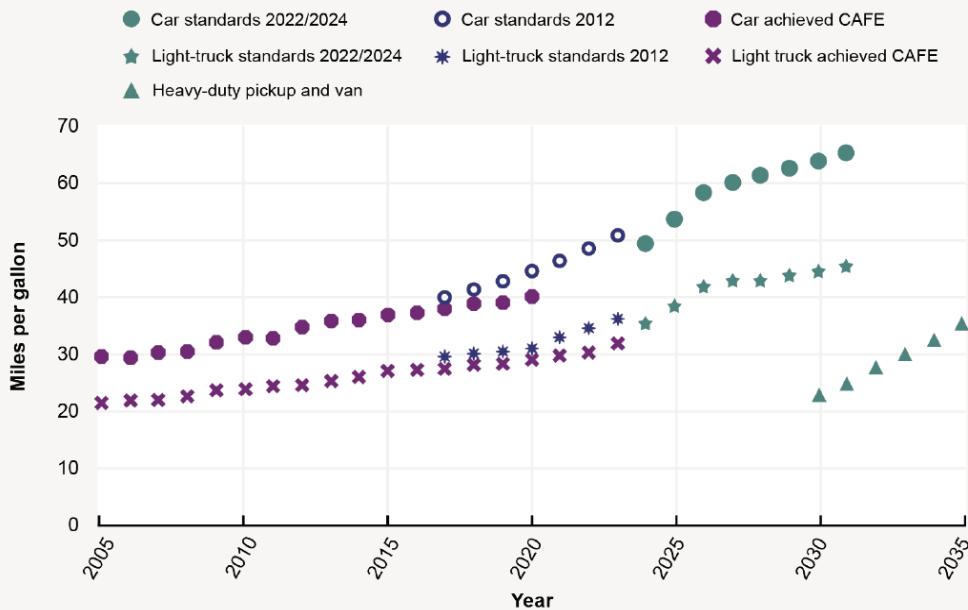


Source: U.S. Department of Transportation, Federal Aviation Administration, Federal Highway Administration, and Federal Transit Administration; U.S. Department of Energy, National Railroad Passenger Corporation (Amtrak); and Association of American Railroads as cited in Bureau of Transportation Statistics, National Transportation Statistics, table 4-6, available at [www.bts.gov](http://www.bts.gov) as of August 2024.

Note: The following conversion rates were used: jet fuel = 135,000 Btu/gallon; aviation gasoline = 120,200 Btu/gallon; automotive gasoline = 125,000 Btu/gallon; diesel motor fuel = 138,700 Btu/gallon; compressed natural gas = 138,700 Btu/gallon; distillate fuel = 138,700 Btu/gallon; residual fuel = 149,700 Btu/gallon; natural gas = 1,031 Btu/ft<sup>3</sup>; electricity 1kWh = 3,412 Btu, negating electrical system losses. To include approximate electrical system losses, multiply this conversion factor by 3.

WB = wheelbase.

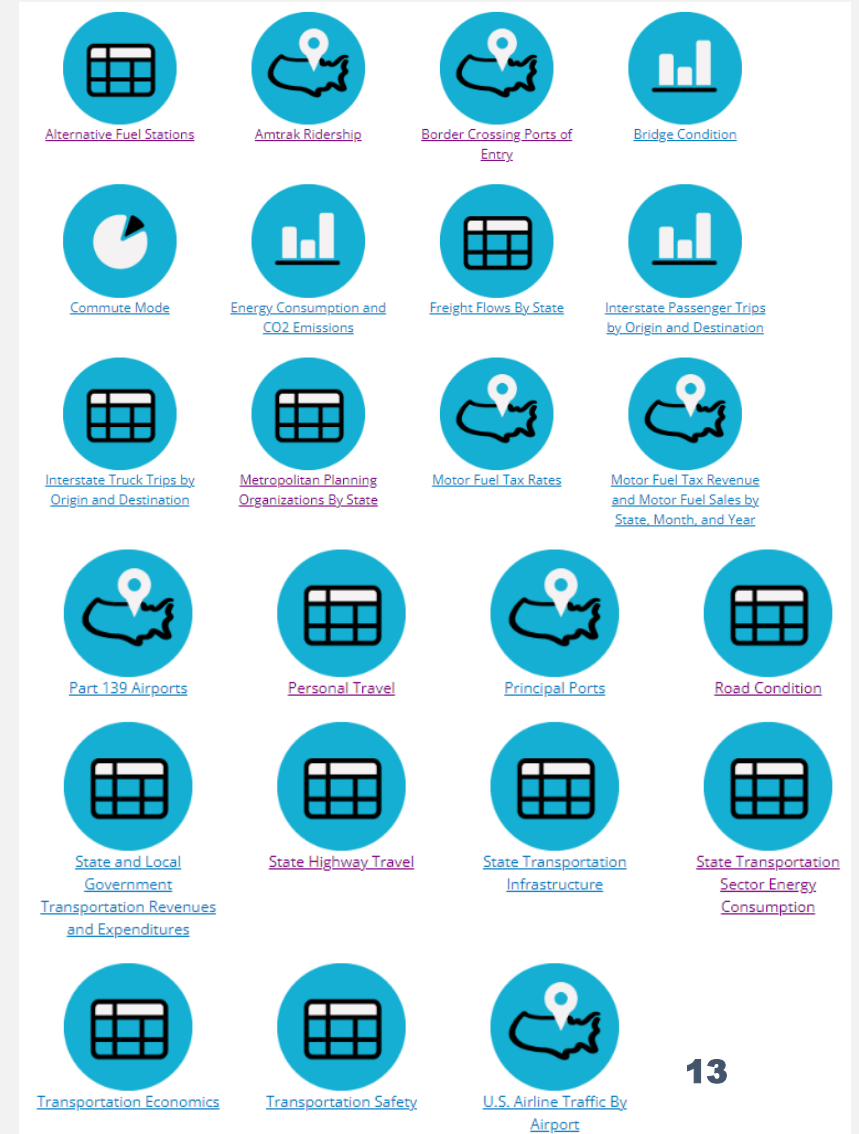
Figure 6-6 CAFE and Achieved MPG for Passenger Cars, Light Trucks, and Heavy-Duty Pickups and Vans



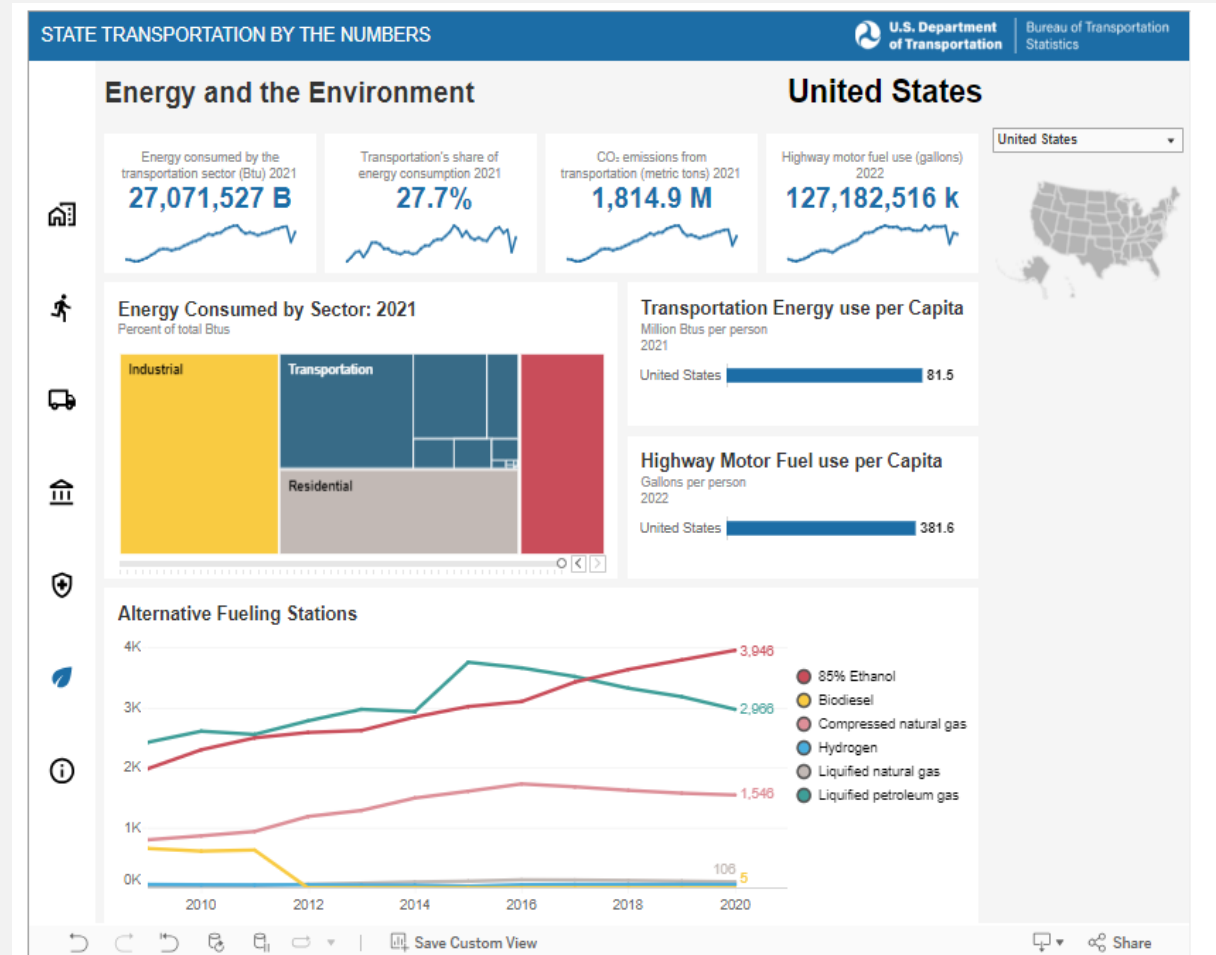
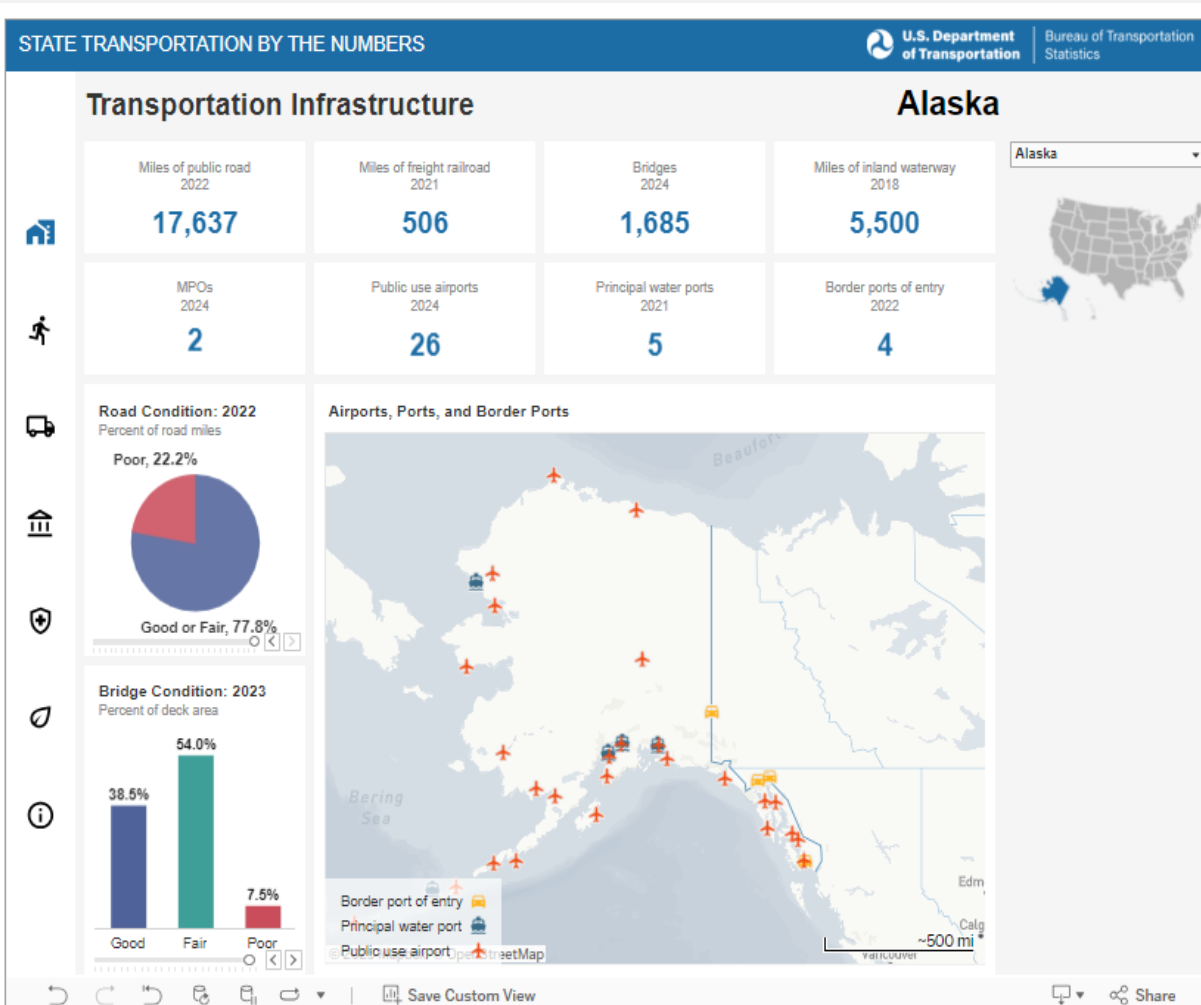
Source: Environmental Protection Agency, 2024, *2023 Automotive Trends Report*, available at <https://www.epa.gov/automotive-trends/explore-automotive-trends-data> as of November 2024. National Highway Traffic Safety Administration (NHTSA), 2024, "Corporate Average Fuel Economy Standards for Passenger Cars and Light Trucks for Model Years 2027 and Beyond and Fuel Efficiency Standards for Heavy-Duty Pickup Trucks and Vans for Model Years 2030 and Beyond," *Federal Register*, 89(121), 52540–52954. NHTSA, 2022, "Corporate Average Fuel Economy Standards for Model Years 2024–2026 Passenger Cars and Light Trucks," *Federal Register*, 87(84), 25731–26092. NHTSA, 2012, "2017 and Later Model Year Light-Duty Vehicle Greenhouse Gas Emissions and Corporate Average Fuel Economy Standards," *Federal Register*, 77(199), 62624–63200.

# State Transportation Statistics

- State Transportation Statistics (STS) is a compilation of transportation statistics from major federal databases and other national sources.
- <https://www.bts.gov/product/state-transportation-statistics?page=0>
- <https://www.bts.gov/browse-statistical-products-and-data/state-transportation-statistics/state-transportation-numbers>



# State Transportation by the Numbers



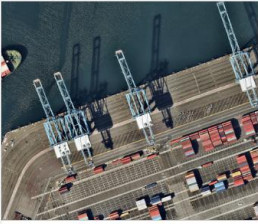









# Freight Facts and Figures

- Freight Facts and Figures provides a snapshot of freight flows in the U.S. the extent, condition, and performance of the physical network over which freight moves.
- <https://data.bts.gov/stories/s/45xw-qksz>

Explore by topic

<p>The Nation Served by Freight</p>  <p>Read more about The Nation Served by Freight</p>	<p>Moving Goods in the United States</p>  <p>Read more about Moving Goods in the United States</p>	<p>International Freight Gateways</p>  <p>Read more about International Freight Gateways</p>
<p>Freight Transportation System Extent &amp; Use</p>  <p>Read more about Freight Transportation System Extent &amp; Use</p>	<p>Freight Transportation System Condition &amp; Performance</p>  <p>Read more about Freight Transportation System Condition &amp; Performance</p>	<p>Freight Transportation &amp; the Economy</p>  <p>Read more about Freight Transportation &amp; the Economy</p>
<p>Freight Transportation Safety</p>  <p>Read more about Freight Transportation Safety</p>	<p>Freight Transportation Energy Use &amp; Environmental Impacts</p>  <p>Read more about Freight Transportation Energy Use &amp; Environmental Impacts</p>	

# Freight Facts and Figures

- Freight Facts and Figures provides a snapshot of Freight Transportation Energy Use and Environmental Impacts.



Environmental Impacts



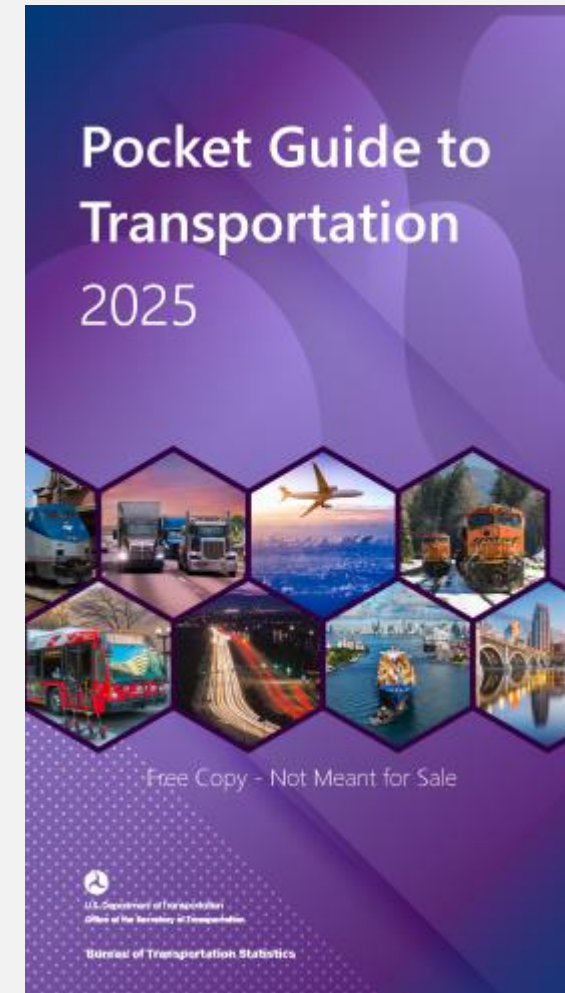
Freight Facts & Figures

## Freight Transportation Energy Use & Environmental Impacts



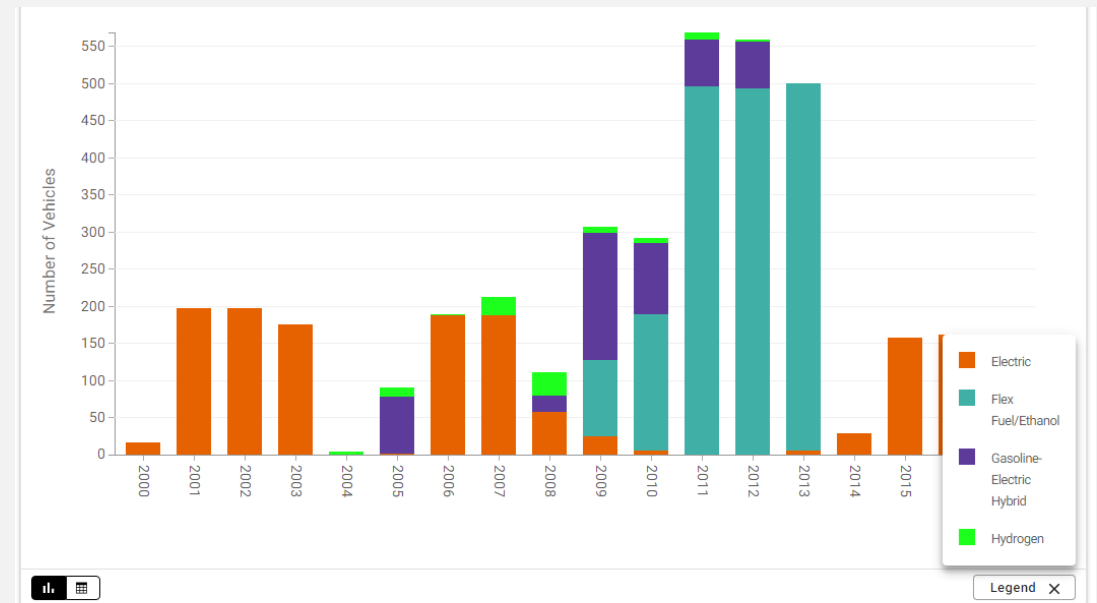
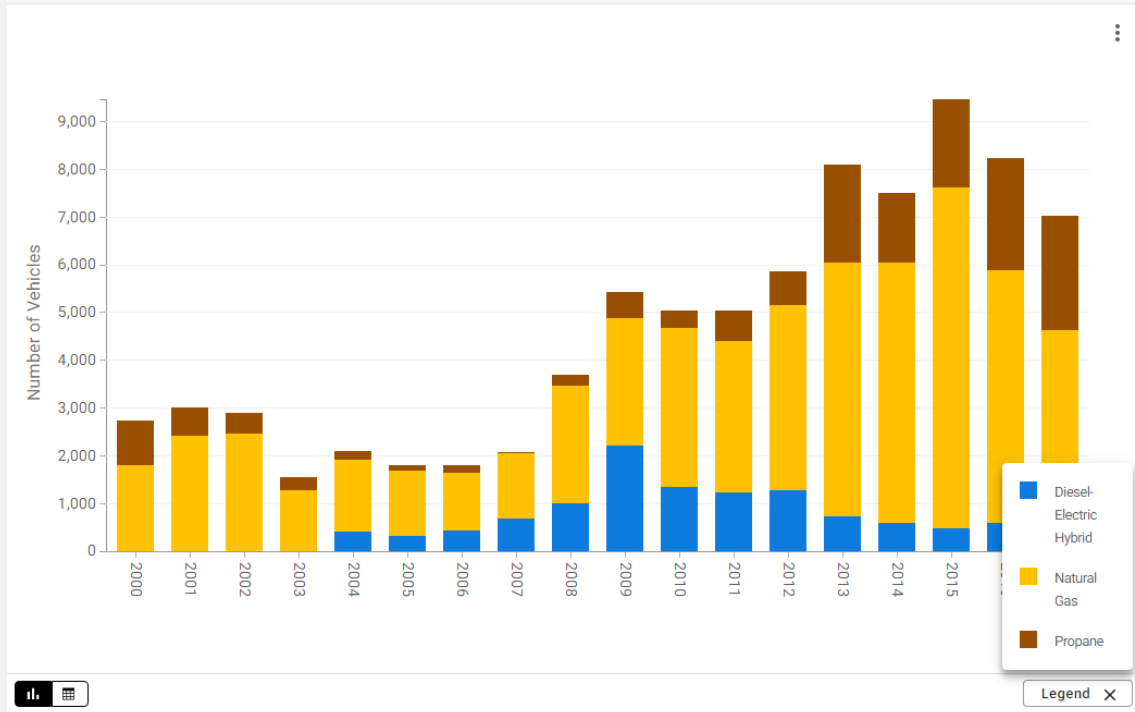
# Pocket Guide to Transportation

- The BTS Pocket Guide to Transportation is a popular, quick reference guide that provides transportation statistics at your fingertips. It provides key information and highlights major trends on the U.S. transportation system.
- Now available in web, mobile, and print
- <https://data.bts.gov/stories/s/3wd5-w3z4>



# Pocket Guide to Transportation

## Alternative Fuel Vehicles by Fuel Type, Large Trucks and Buses



### Notes:

Includes the total number of heavy duty vehicles (Ex. school buses, transit buses, intercity buses, and other trucks) that were manufactured or converted by vehicle suppliers (companies or organizations) in the associated calendar year. *Natural Gas* includes Compressed natural gas (CNG) and liquefied natural gas (LNG). *Flex Fuel/Ethanol* vehicles are capable of running on E85, unblended gasoline, or any ethanol-gasoline blends in between. *Electric* excludes gasoline-electric and diesel-electric hybrids.

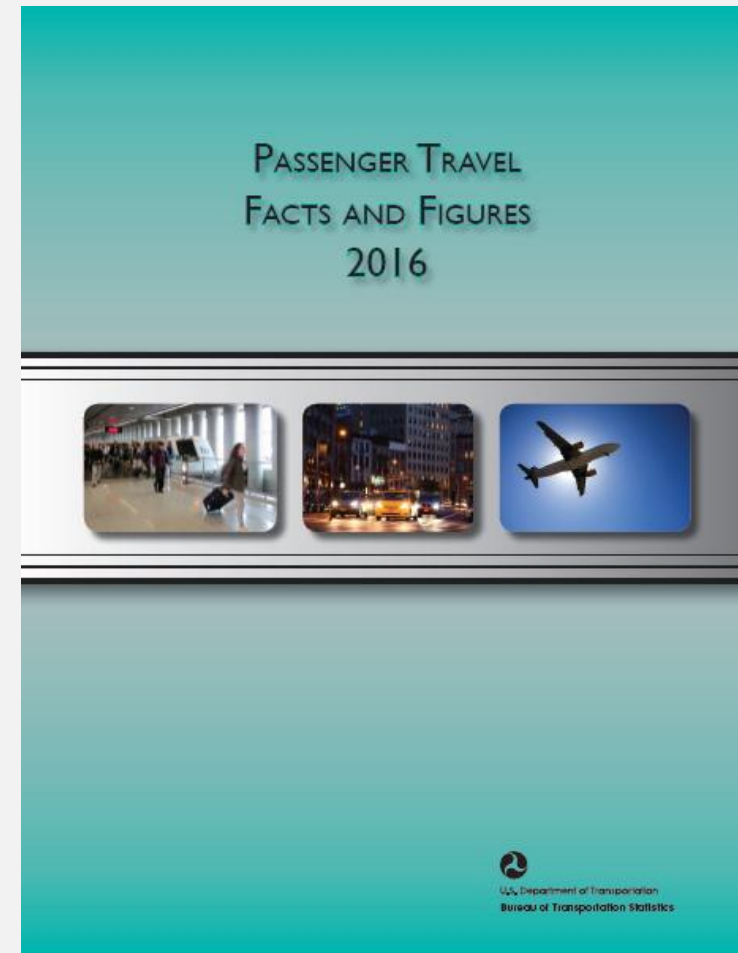
### Sources:

U.S. Department of Energy, Energy Information Administration, Alternative Fuel Vehicle Data, Supplier Database, available at <https://www.eia.gov/renewable/afv/>.

# Passenger Travel Facts & Figures

- *Passenger Travel Facts and Figures* is a snapshot of the characteristics and trends of personal travel in the United States; the network over which passenger travel takes place; and the related economic, safety, and environmental aspects of passenger travel.

<https://www.bts.gov/product/passenger-travel-facts-and-figures>



# Port Performance

## Measuring Port Performance



2024

[Read more about Measuring Port Performance](#)

## A Port's Role



2025 Annual Report

[Read more about A Port's Role](#)

## Types of Ports



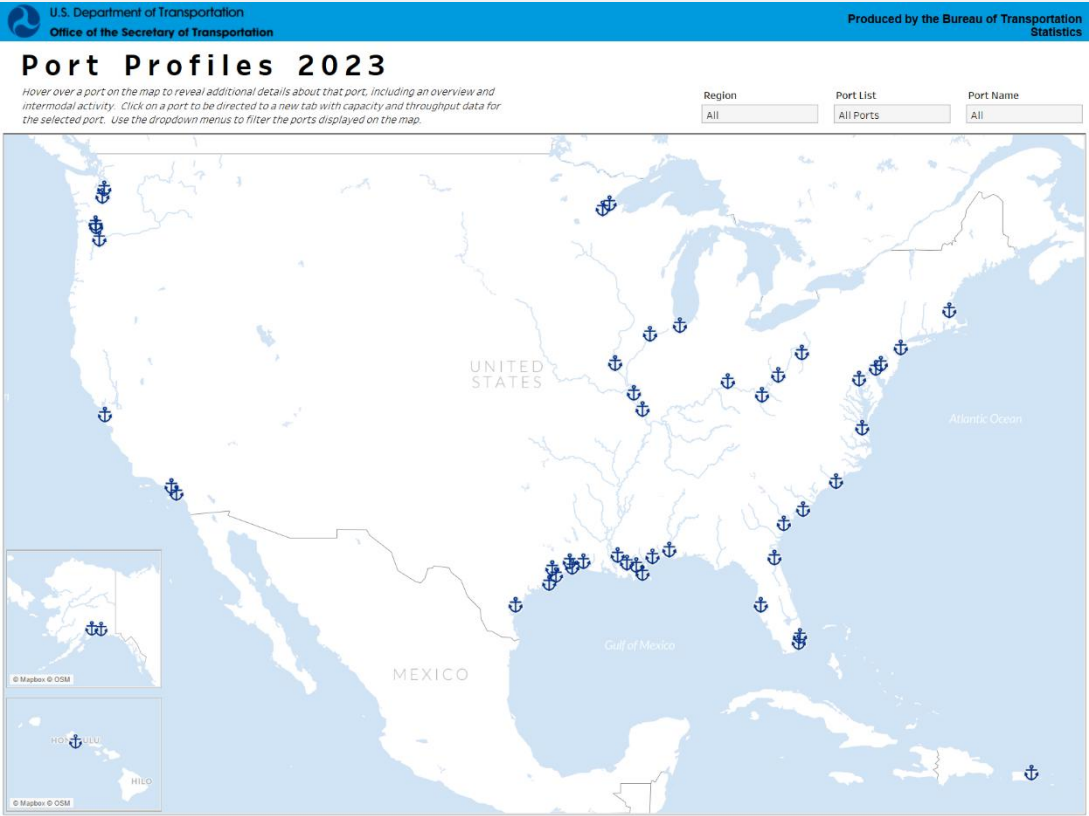
2023

[Read more about Types of Ports](#)

<https://www.bts.gov/ports>

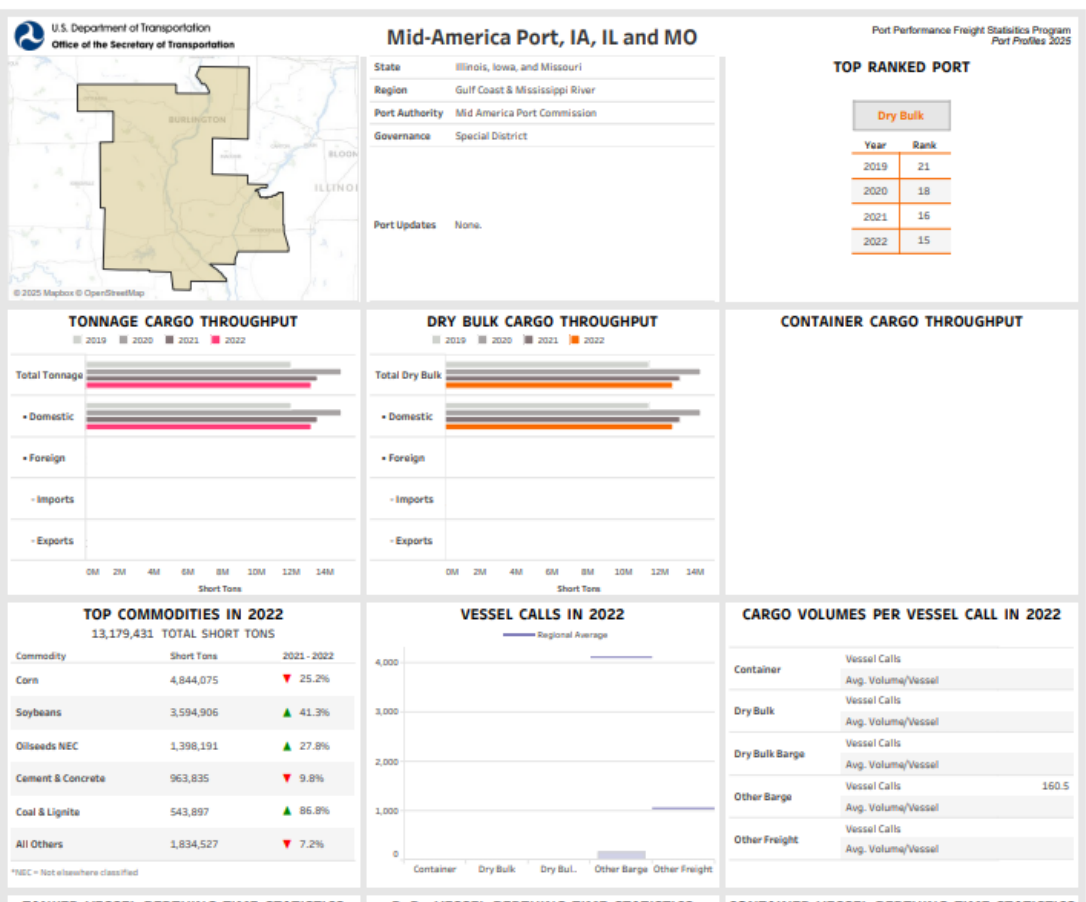


# Port Performance

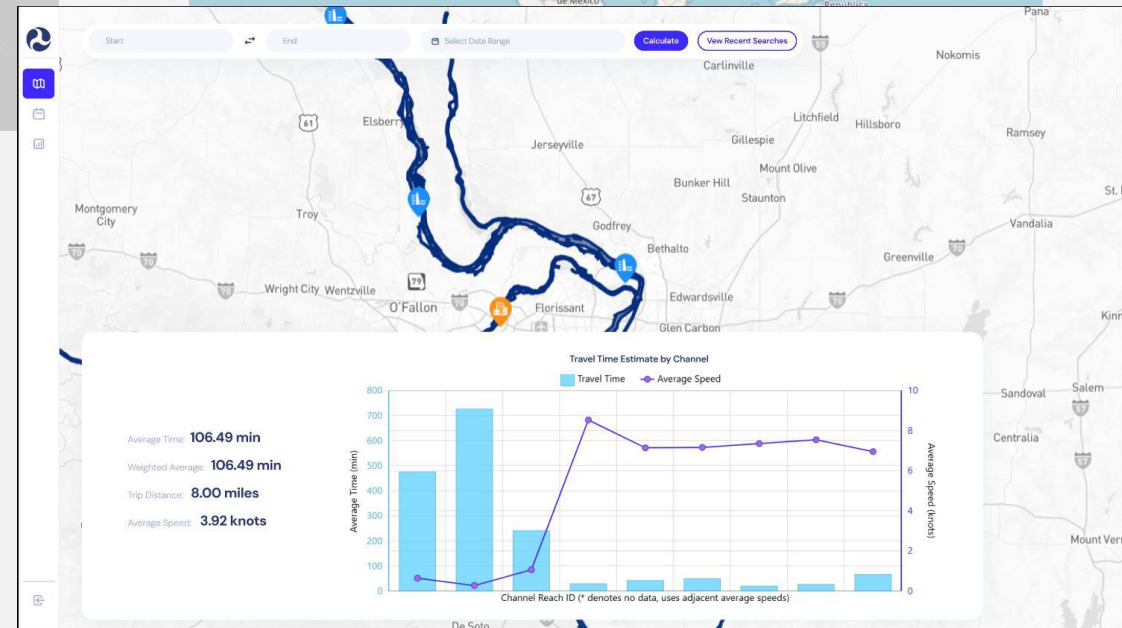
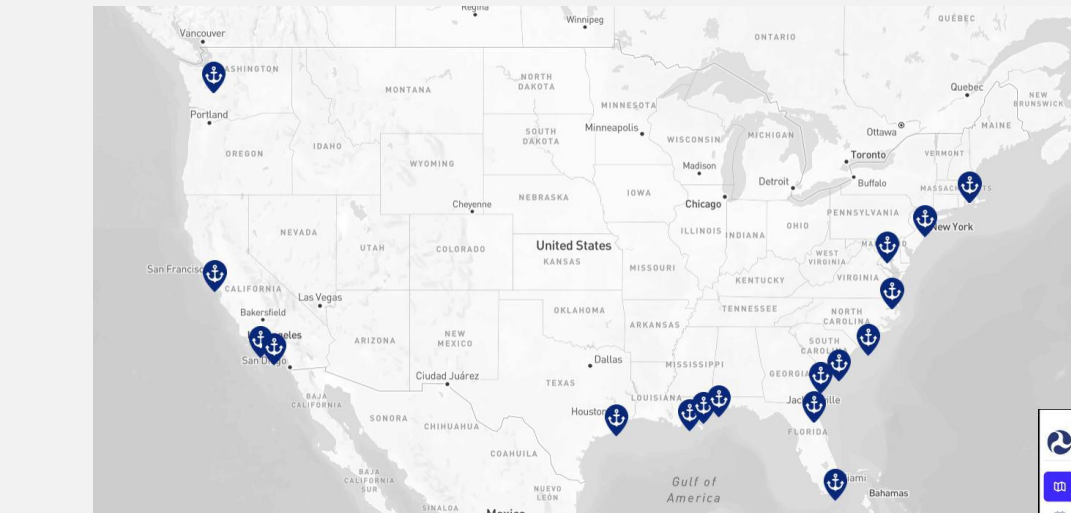
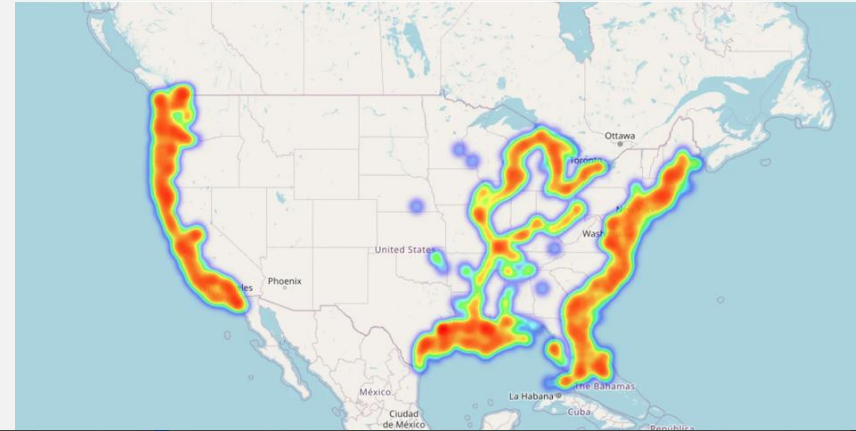


[Workbook: PortProfiles](#)

Bureau of Transportation Statistics



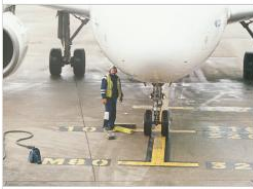








# Port Performance



# Aviation Facts and Figures

**Airlines, Airports, and Aviation**

Below is a compilation of some of BTS' most popular air carrier statistics. You can find information on airline passenger counts and cargo between individual airports; airline ticket prices; on-time performance by carrier and flight; as well as airline finance, employment, and fuel costs. BTS data are used in the Air Travel Consumer Report (ATCR) and the Domestic Airline Fares Consumer Report.

<p><b>Passengers</b></p>  <p>Passengers, seats and load factor by year and carrier.</p> <p><a href="#">Read more about Passengers</a></p>	<p><b>Freight</b></p>  <p>Domestic and international freight and mail by year and carrier.</p> <p><a href="#">Read more about Freight</a></p>	<p><b>Air Fares</b></p>  <p>Average air fares by year, airport, and distance.</p> <p><a href="#">Read more about Air Fares</a></p>
<p><b>Flights</b></p>  <p>Domestic &amp; international departures by year and by carrier.</p> <p><a href="#">Read more about Flights</a></p>	<p><b>Performance</b></p>  <p>Carrier on-time performance and causes of delay.</p> <p><a href="#">Read more about Performance</a></p>	<p><b>Financials</b></p>  <p>Employment and revenue.</p> <p><a href="#">Read more about Financials</a></p>
<p><b>General Aviation</b></p>  <p>General aviation performance and inventory.</p> <p><a href="#">Read more about General Aviation</a></p>	<p><b>Fuel Consumption</b></p>  <p>Fuel consumption and cost. Fuel efficiency of the air carrier fleet.</p> <p><a href="#">Read more about Fuel Consumption</a></p>	<p><b>Fleet Mix</b></p>  <p>Aircraft seating capacity and average fleet age.</p> <p><a href="#">Read more about Fleet Mix</a></p>

- Passengers
- Freight
- Air Fares
- Flights
- Performance
- Financials
- General Aviation
- Fuel Consumption
- Fleet Mix

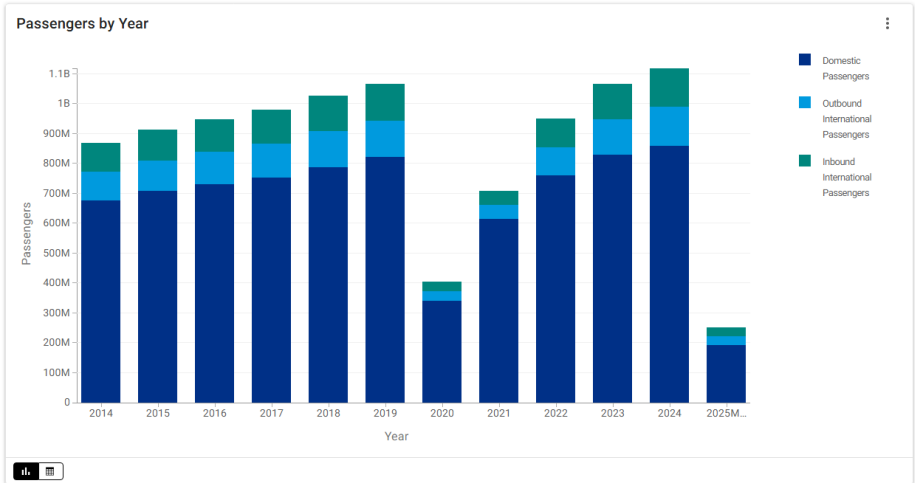
[Aviation Facts and Figures | BTS Data Inventory](#)

# Aviation Facts and Figures

Aviation Facts & Figures | Passengers

## Passengers by Year

Since 2014, based on U.S. and foreign air carriers, the most passengers by year derive from domestic flights, followed by inbound international flights, and lastly outbound international flights. From 2014 to 2019 there was a steady increase in the number of domestic, outbound, and inbound international passengers. However, when the pandemic hit the U.S., the total passengers flown in 2020 reached a low of 405.7 million total passengers, a 61.9 percent decrease from 2019 to 2020. In 2021, there was an increase of 74.8 percent to 708.7 million passengers. The following year there was a 33.8 percent increase from 2021 to 2022 and a 12.3 percent increase from 2022 to 2023. By 2023, the total number of passengers flown surpassed the pre-pandemic 2019 record of 1.065 billion passengers with 1.067 billion passengers in 2023.

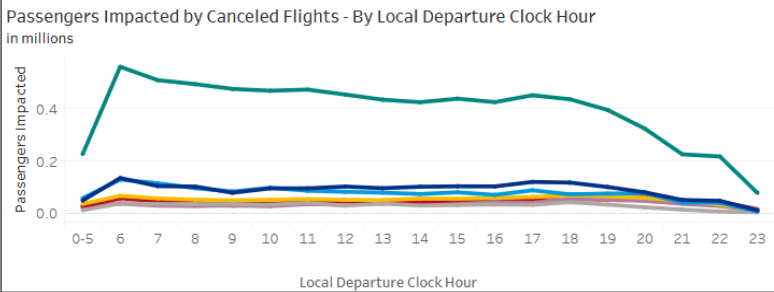
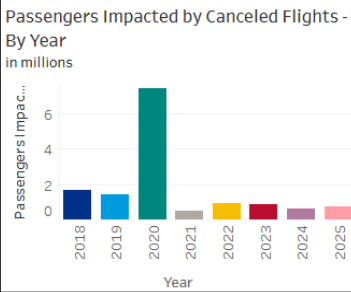
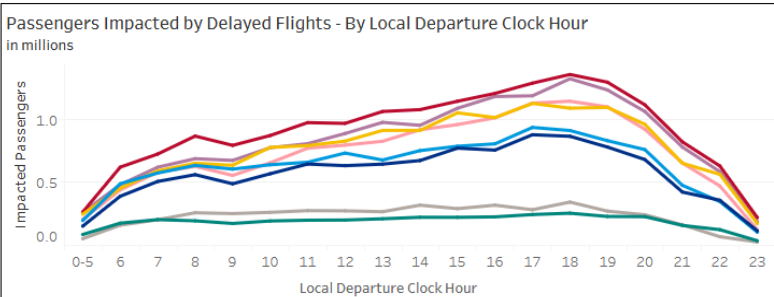
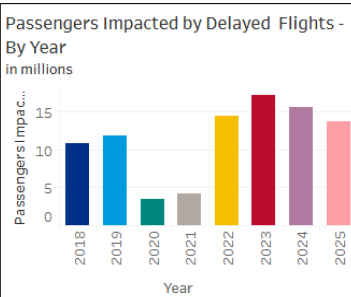


Note: Numbers may not add to totals due to rounding.

Source: Bureau of Transportation Statistics, [T-100 Segment \(All Carriers\)](#).

## Passengers Impacted by Delayed and Canceled Flights

Flight delays and cancellations are a major concern for air travelers. An estimated 174.3 million passengers were affected by arrival delays of 15 minutes or more in 2023. Most passengers encounter delays in the evening hours from 5 p.m. to 7 p.m.. Flight cancellations spiked in 2022, with 190 thousand canceled flights. These cancellations impacted about 19.6 million passengers.





# TransBorder Freight Data

Data Dashboard



[Read more about Data Dashboard](#)

Chart



[Read more about Chart](#)

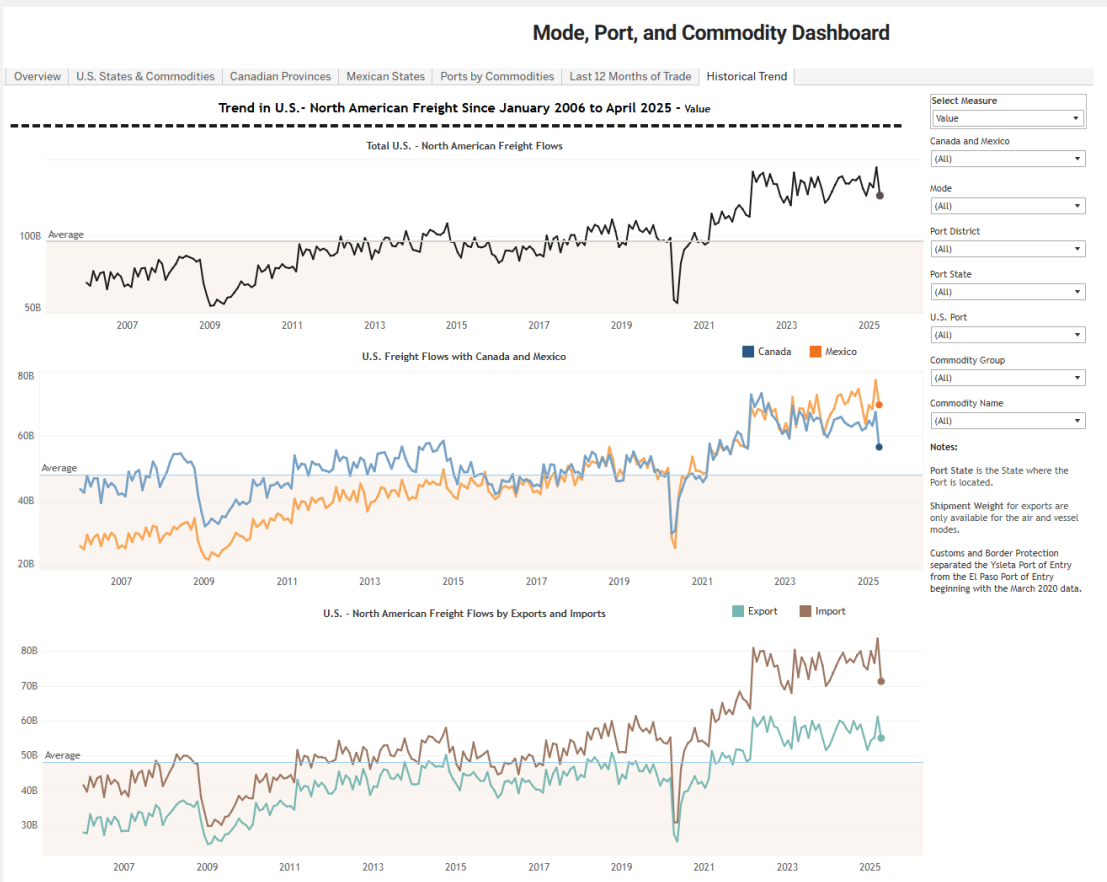
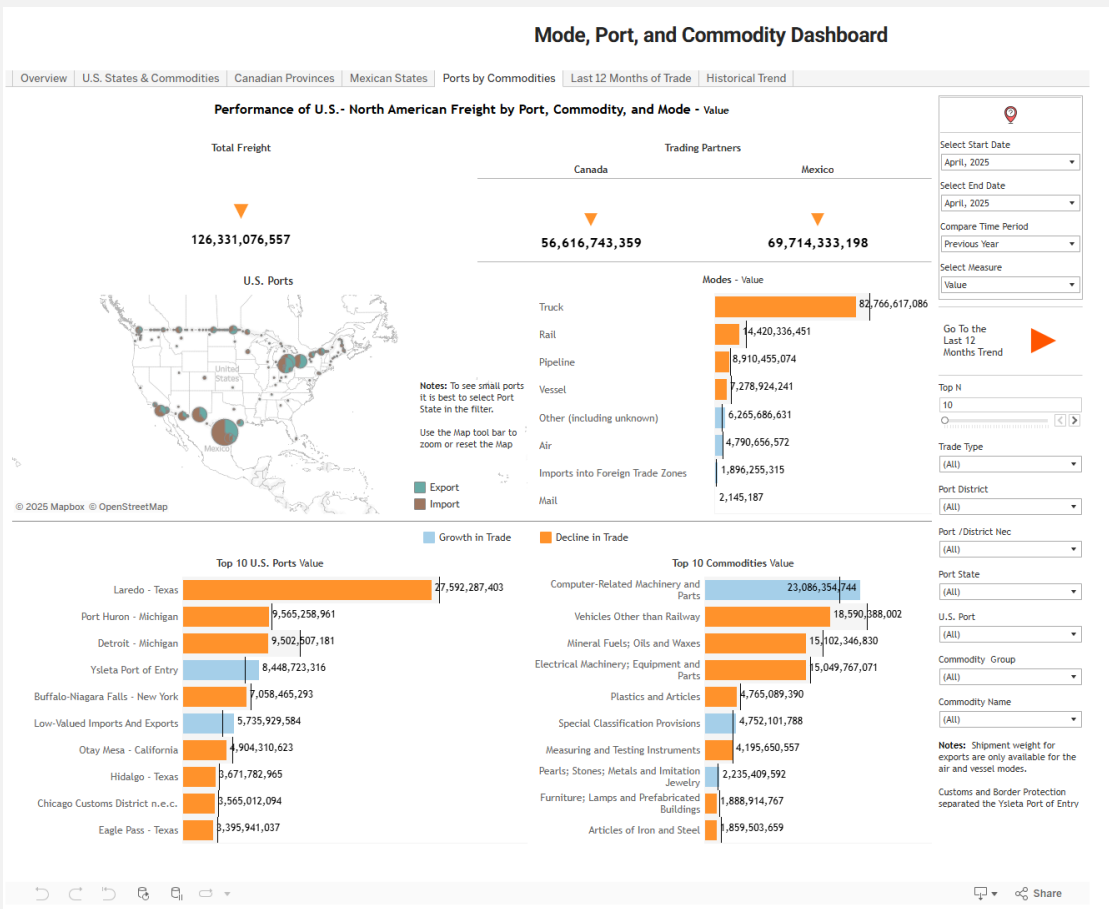
Forecast



[Read more about Forecast](#)

[TransBorder Freight Data | BTS Data Inventory](#)

# TransBorder Freight Data



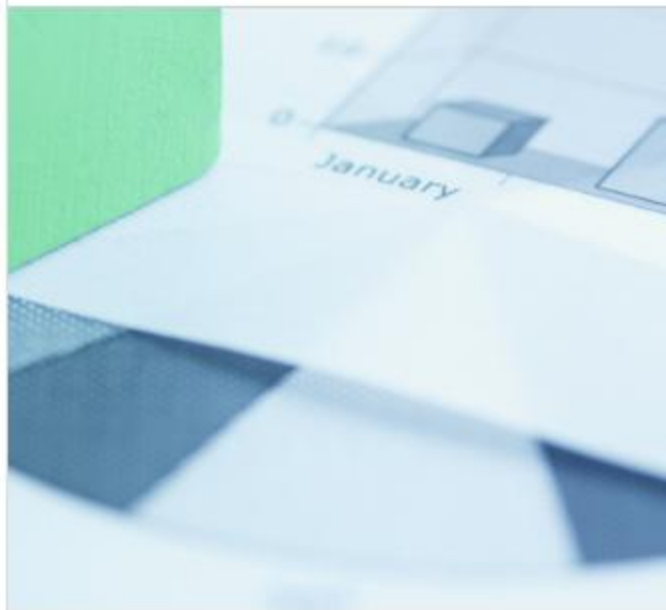
# Border Crossing

## Data Tables

ELT	12.85
DON	23.45
SAFT	22.34
LEV	10.36
IR	14.52
FIX	29.58

[Read more about Data Tables](#)

## Data Visualization



[Read more about Data Visualization](#)

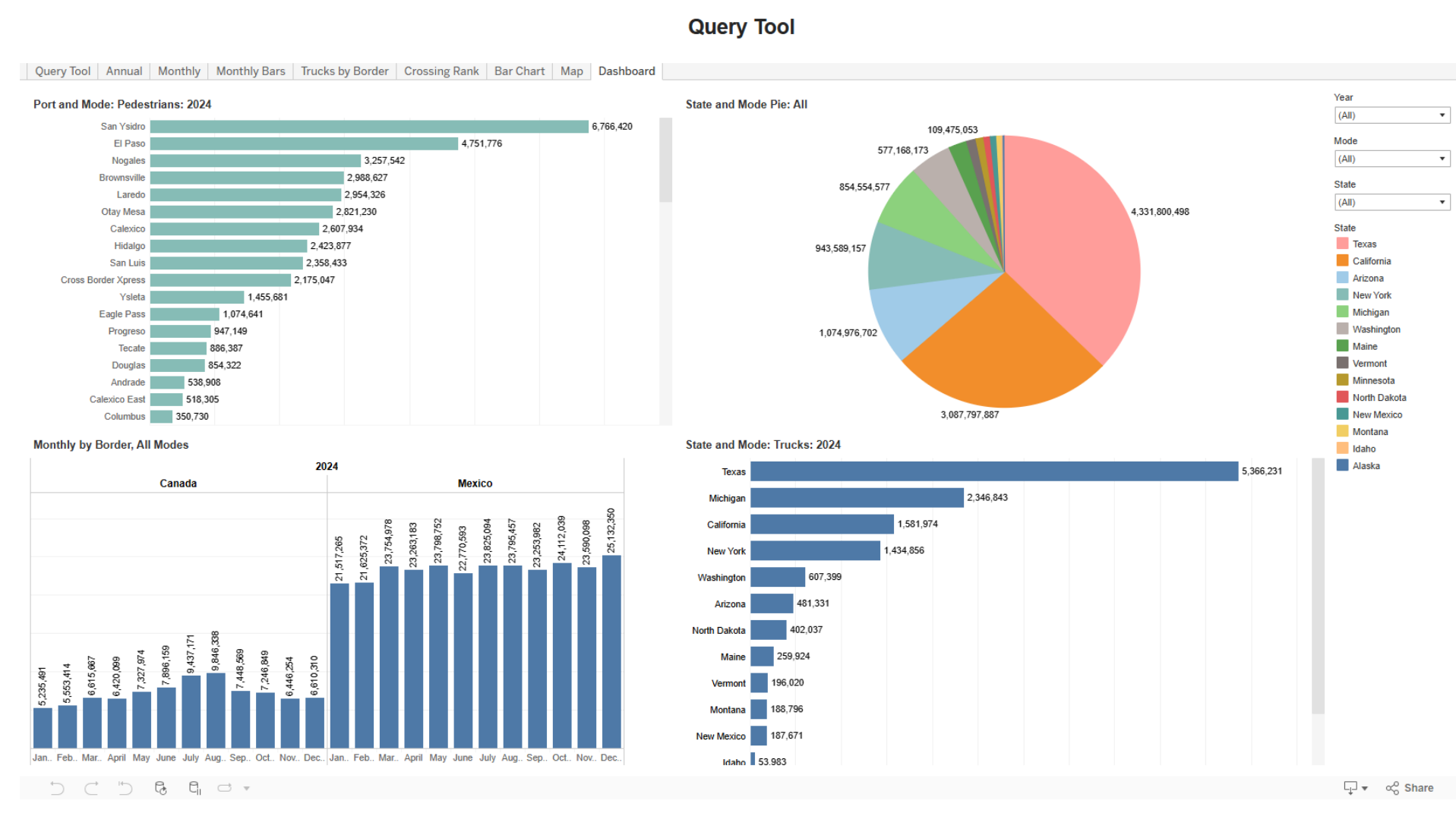
## Maps



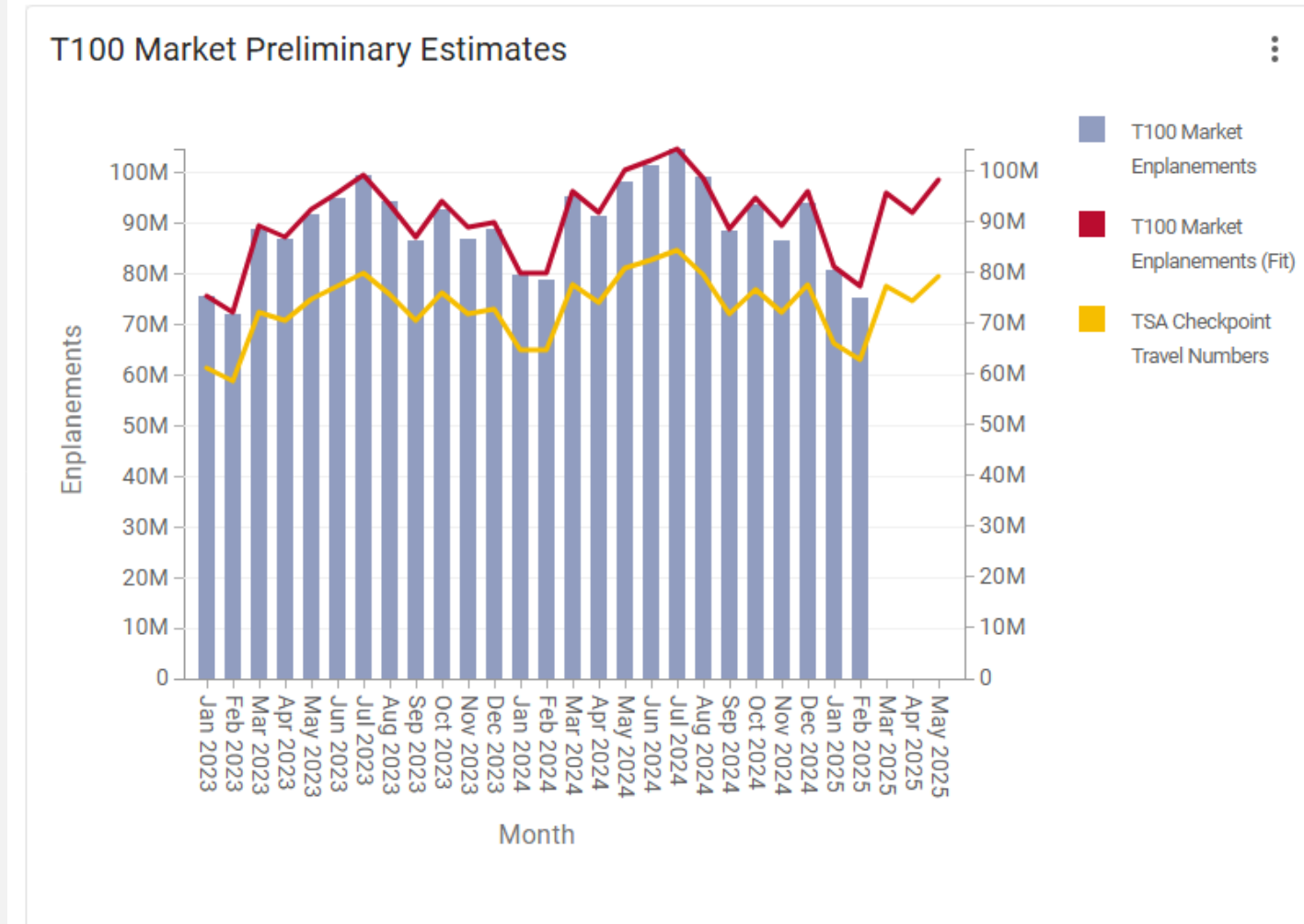
[Read more about Maps](#)

[Border Crossing/Entry Data | BTS Data Inventory](#)

# Border Crossing



# Preliminary Estimates



[Preliminary Estimates | Bureau of Transportation Statistics](#)




# Thank You


# Bureau of Transportation Statistics

[Ask-A-Librarian](#)    [A-Z Index](#)


Topics and Geography
Statistical Products and Data
National Transportation Library
Newsroom
About BTS



**U.S. Airlines' November 2024 Fuel Cost per Gallon up 0.9% from October 2024; Aviation Fuel Consumption up 3.3% from Pre-Pandemic November 2019**



**Third Quarter 2024 Average Air Fare Decreases 4.6% from Second Quarter 2024**



**There are currently  
69.8K  
public and available  
EV charging stations  
in the U.S.  
as of 1/13/2025**

Bureau of Transportation Statistics  
Office of the Secretary  
U.S. Department of Transportation

[Bureau of Transportation Statistics](#)

[ramond.robinson@dot.gov](mailto:ramond.robinson@dot.gov)