



# The Transportation & Land Use Connections Grant Program

BRTB: Project Selection – Round #2

March 6, 2024



# The Transportation & Land Use Connections Grant Program

## BRTB: Project Selection – Round #2

- **Program Purpose –**

The Transportation & Land Use Connections grant (TLC) program will provide short-term technical assistance to support local governments in their planning and preliminary design efforts to implement changes to the built environment that reduce traffic on roads and enable more people to easily walk, bike, and use transit.

- **Round #2**

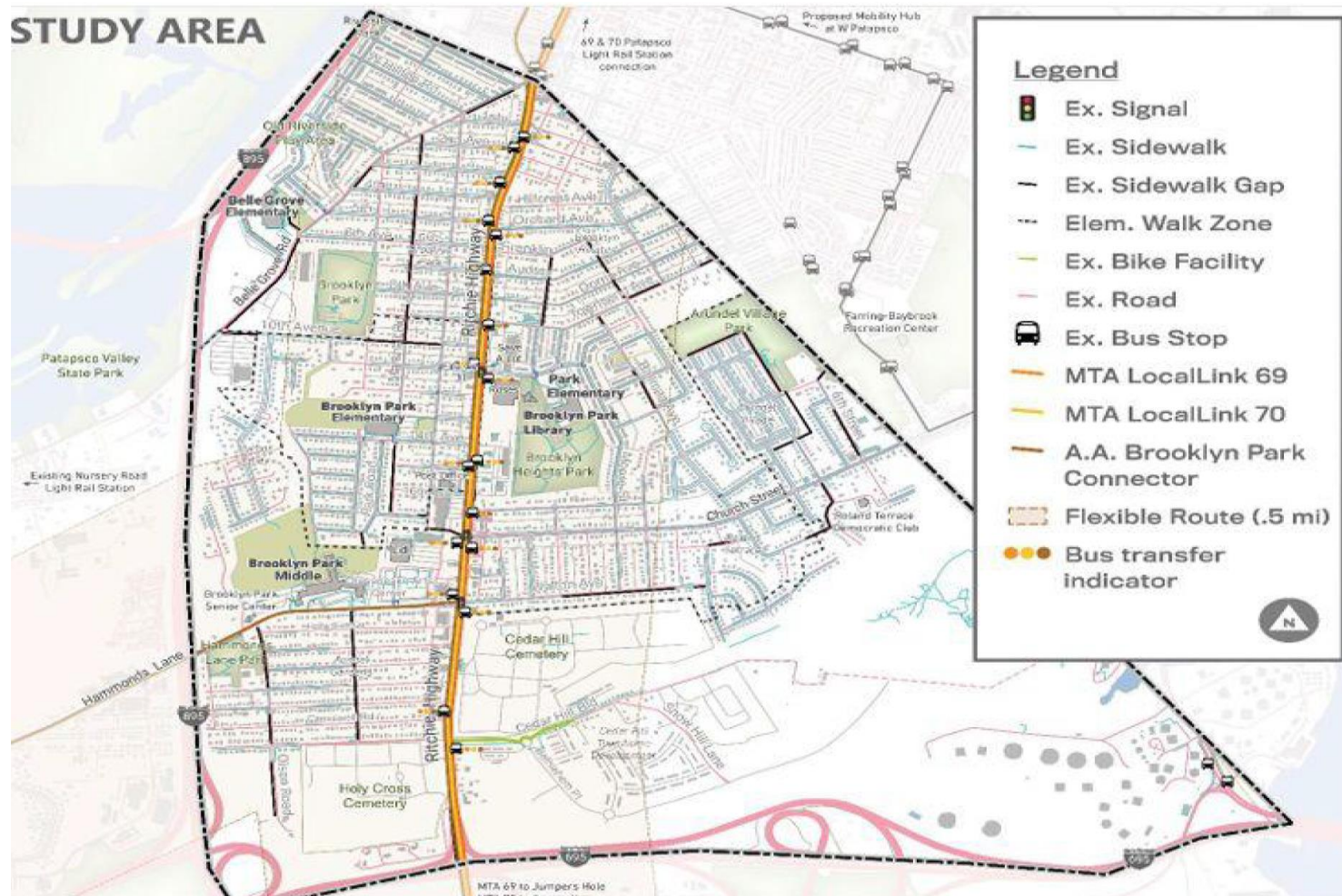
Four (4) projects were received from different applicants – one each from Anne Arundel County, Baltimore County, Carroll County and Queen Anne's County.

Round #2 contract authority is for \$300,000 total.

# Anne Arundel County – Brooklyn Park Bicycle/Pedestrian Connectors

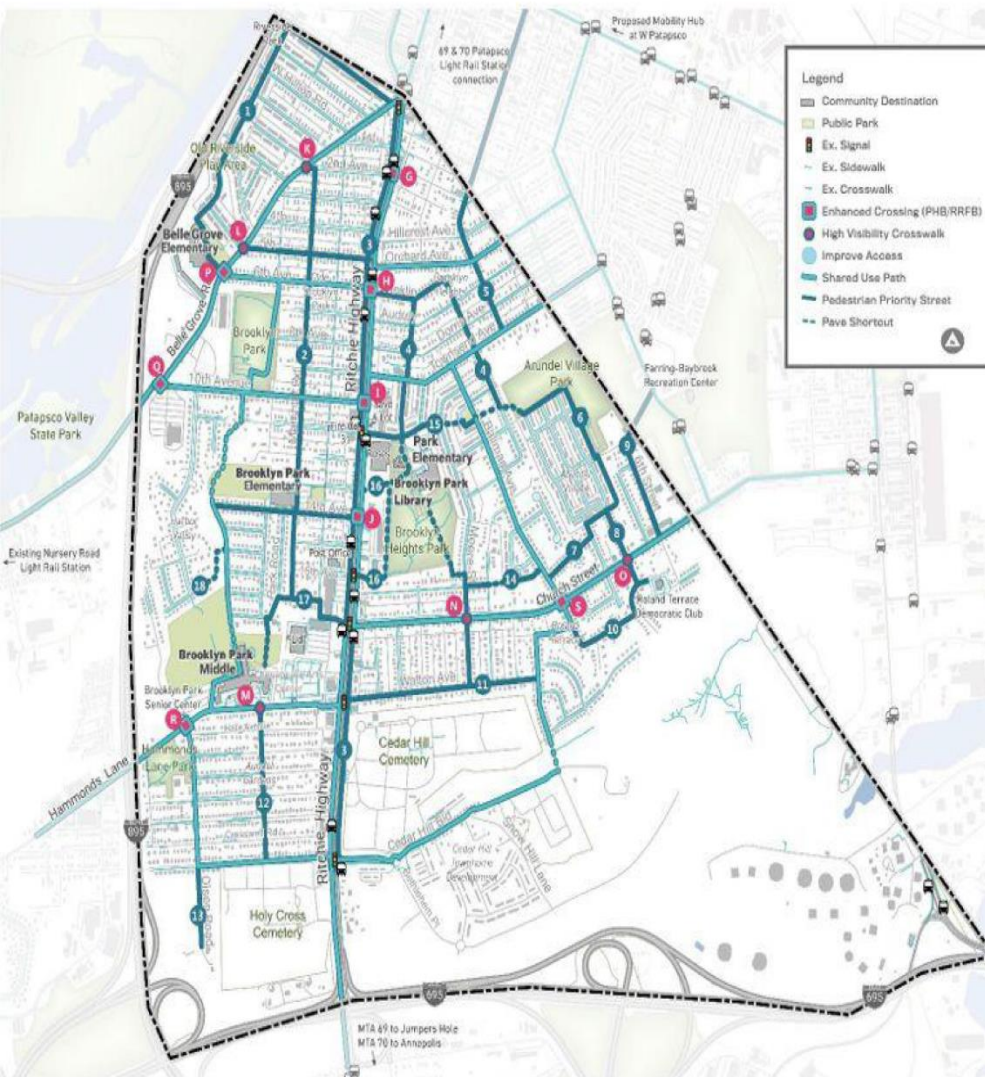
- Planning request for detailed analysis of Priority Project #4 of the Brooklyn Park Neighborhood Transportation Study which recommends studying the feasibility of new paths that would increase walking opportunities to and from an internal neighborhood loop.
- The recommendation provides specific routes to study.
- Also includes a crossing of MD 2 connecting the Middle School with the new recreation center.
- Brooklyn Park is one of 3 designated Sustainable Communities in Anne Arundel County.
- Request is for \$100K in consultant resources. Total estimated cost of \$250,000 with committing staff resources.

# Anne Arundel County – Brooklyn Park Bicycle/Pedestrian Connectors





## BROOKLYN PARK NEIGHBORHOOD TRANSPORTATION STUDY



**Priority Project #4:** Study the feasibility of building new paths that would increase walking opportunities to parks, schools, or retail that would form an internal neighborhood loop.

### Pedestrian Project Name

#### Map #

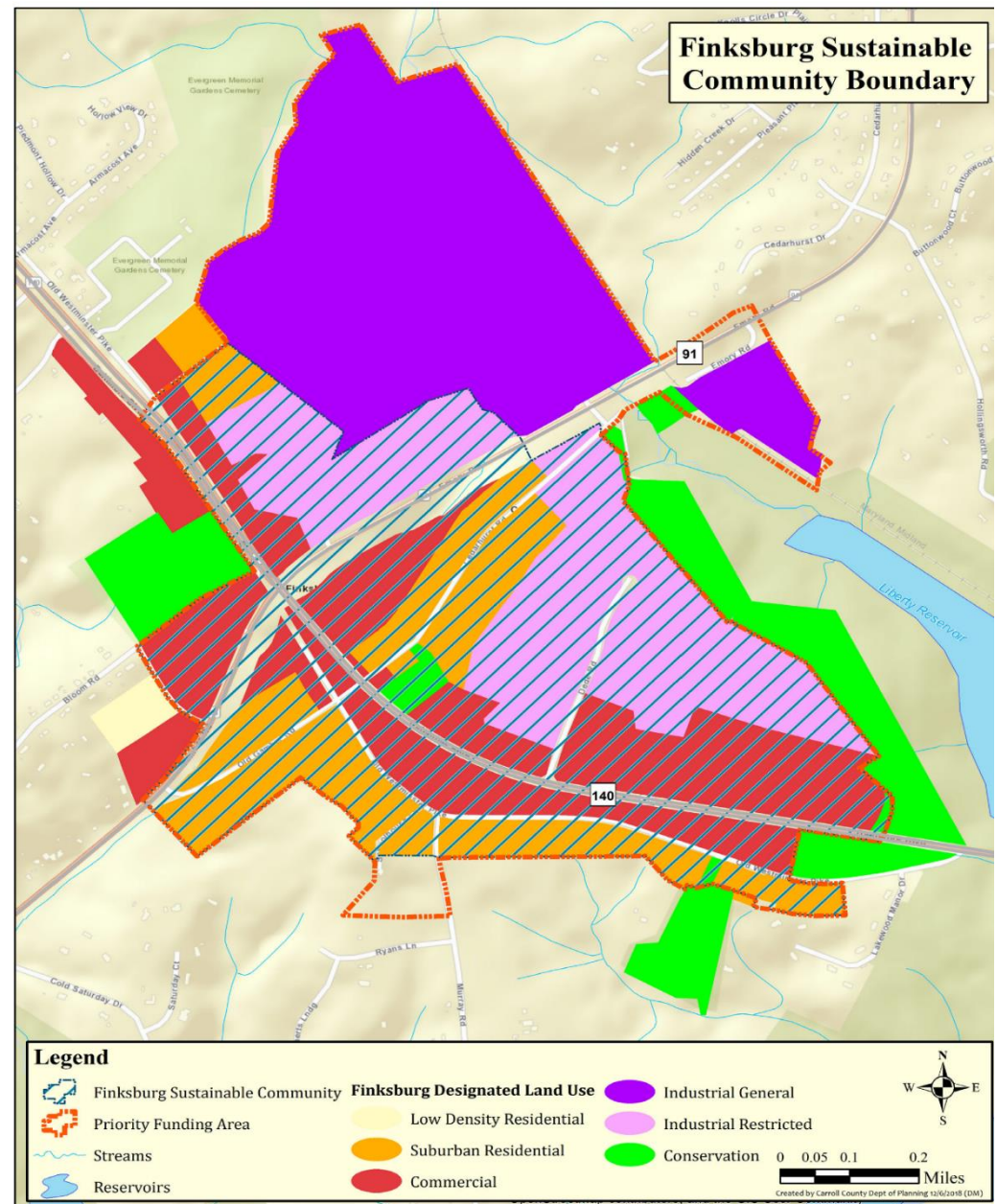
14	Alley 27 to abandoned alley easement at Brooklyn Heights Park
15	Extension of 11th to Arundel Village Park
16	Connect Ritchie Highway to Brooklyn Heights Park
17	Extension of Church Street to behind Brooklyn Park Middle School

**Priority Project #5:** To support a multimodal Ritchie Highway, inventory and standardize amenities for transit users. As part of upgrades along Ritchie Highway, clean up sign clutter so the bus stops are easier to locate, and install bus shelters, benches, and trash cans. Assess each stop's clearance zone.

# Carroll County – Finksburg Bicycle and Pedestrian Feasibility Study

- Planning funds to assess the feasibility of a bicycle and pedestrian network in the Town of Finksburg.
- Outcome will be a guiding document that will assist in updating the Finksburg Corridor Plan, County Master Plan and County-wide Bike/Pedestrian Master Plan.
- Finksburg is a designated Sustainable Community.
- Vulnerable Population Index of 2 in area south of MD 140 where both disabilities and age are above the regional average.
- The Finksburg Corridor Plan prioritizes enhancing bicycle and pedestrian circulation between neighborhoods.
- Currently only a small segment of MD 140 contains sidewalk. The rest of the town would be considered a “Clean slate” which will allow for forward thinking and creativity.
- Request is for \$80K in consultant resources. The City has committed time from staff as a match.

# Carroll County – Finksburg Bicycle and Pedestrian Feasibility Study



# Queen Anne's County – Cross County Connector Trail

- Preliminary study to extend the existing Cross County trail for an additional 1.5-2.0 miles and to investigate possible trail spurs to connect to Main Street in Grasonville.
- Existing trail connects schools, library, parks, businesses, restaurants, and employment centers across Kent Island to Grasonville.
- Extension to Main Street would increase opportunities for residents.
- This area has a high level of disabled, over 75 years old and without a car.
- Request is for \$80K in consultant resources. The County has committed time from staff as a match.

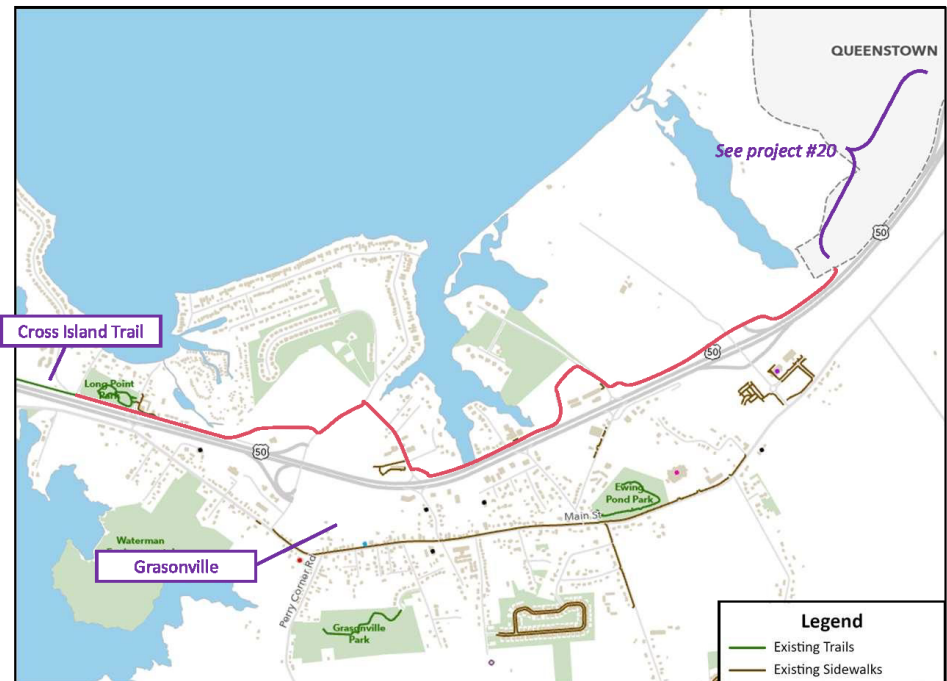


# Queen Anne's County – Cross County Connector Trail

## 4

## Cross Island Trail Extension to Queenstown

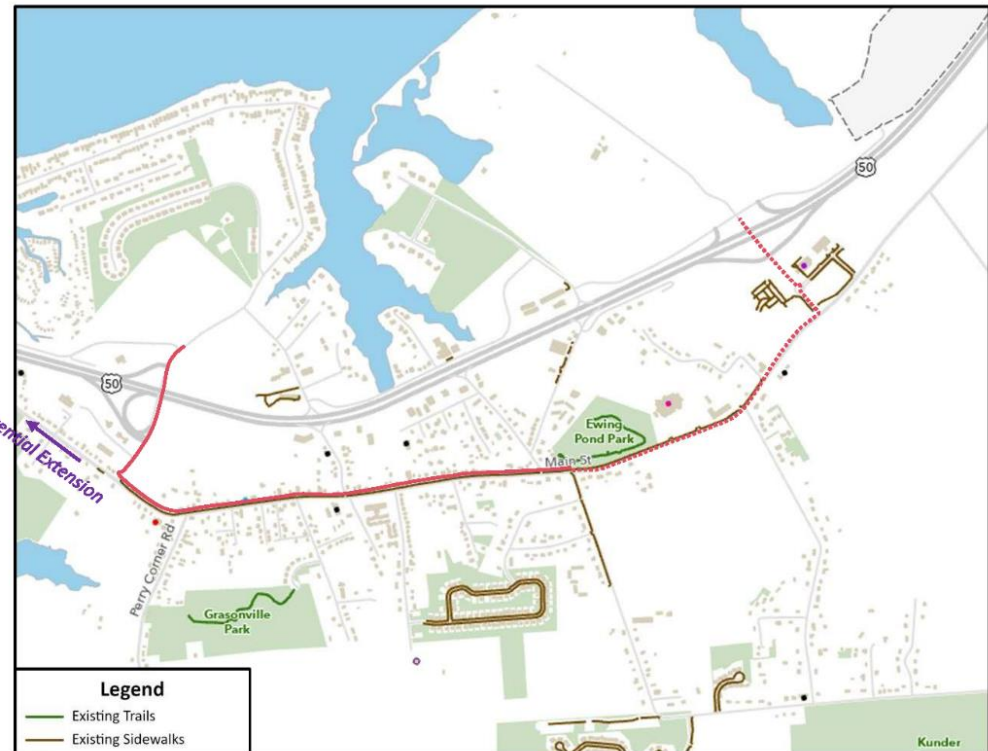
- **Project Type:** Major
- **ROW:**
  - Unclear due to Saddler Rd and Winchester Creek Rd being within the US 50 ROW
- **LTS:** Primarily 1, Some 2 or 3
- **Constraints:** ROW (Maybe)
- **Opportunities:**
  - May be feasible to construct an off-street trail if sufficient width is available within the US 50 ROW, as Saddler and Winchester Creek Rd exist within it
  - May connect to Grasonville through other projects (see project #5)
- **Public Support:**
  - Proposed QAC connection
  - Requested by the public (public workshop and public survey)



# Queen Anne's County – Cross County Connector Trail

## 5 Cross Island Trail to Grasonville Connection

- **Project Type:** Minor
- **ROW:** Varies; Typically ~40-45 ft
- **LTS:** Varies; Typically 2
- **Constraints:** ROW
  - Constrained at US 50 bridge crossing due to bridge width, but may be sufficient for bike lane
- **Opportunities:**
  - Provide a US 50 safe crossing with no new infrastructure
  - Connects to Grasonville parks and neighborhoods through low stress neighborhood streets off Main St.
  - Potential to extend further East to US 50 crossing at Nesbit Rd (potential tie into Cross Island Trail Extension - Project #4)
  - Potential to extend West on Main St.
- **Public Support:**
  - US 50 bridge crossings to Grasonville recommended by public (public workshop and public survey)
  - Proposed in QAC Comprehensive Plan



# Recommendations

BMC staff members evaluated the project applications and recommend the following for the Round 2 of the TLC Grant Program.

- Work with Anne Arundel County and consultant support team to refine a scope of work and schedule for up to \$80,000 for the Brooklyn Park project.
- Work with Carroll County and consultant support team to refine a scope of work and schedule for up to \$80,000 for the Finksburg project.
- Work with Queen Anne's County and consultant support team to refine a scope of work and schedule for up to \$80,000 for the Finksburg project.
- Baltimore County elements will be included in BMCs upcoming Micro-Transit project.

# For More Information

---

**Keith Kucharek** | Senior Transportation Planner

410-732-0500, ext. 1052 | [kkucharek@baltometro.org](mailto:kkucharek@baltometro.org) | [www.baltometro.org](http://www.baltometro.org)



@BALTOMETROCOUNCIL



@BALTIMORE METROPOLITAN COUNCIL



@BALTIMORE METROPOLITAN COUNCIL

