



# LRTP Local Funding Forecast Tool

October 4, 2022

Kimley»Horn

# Overview

- Introductions
- Purpose and Objective
- Methodology
- Overview of Tool
- Questions

# Introductions

- BMC Staff
- Kimley-Horn





# Purpose and Objective

- **Understand local funding** used by BMC jurisdictions to support transportation projects, and the breakdown of funding between:
  - *System Preservation*
  - *Expansion*
  - *Operations*
- **Develop a local funding projection tool** to help better understand how local funding supports the future of transportation in the region
  - *Present – 2050*

# Methodology: Data Collection

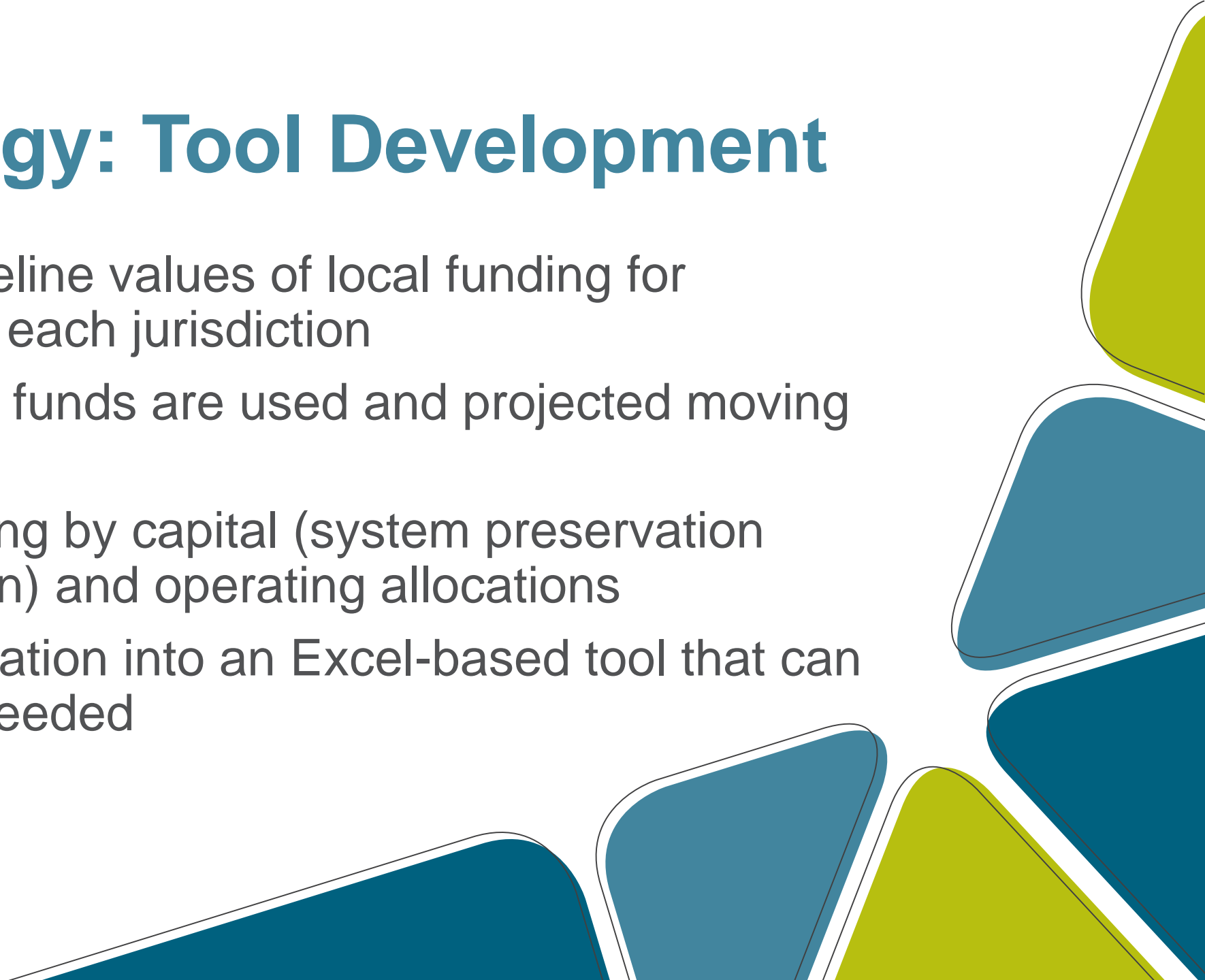
- **Document reviews:** Reviewed relevant local funding documents for BMC jurisdictions including:
  - Capital budgets
  - Operating budgets
  - Capital improvement programs (CIPs)
- **Jurisdictional interviews:** Interviewed relevant staff members from jurisdictions to determine/confirm:
  - Breakdown of local funding available for transportation
  - Methods for projecting local funding growth

# Jurisdictional Interviews

County or Jurisdiction	Date of Interview	Jurisdictional Staff in Attendance [Role and Department]
Anne Arundel	03/22/2022	<ul style="list-style-type: none"> <li>□ Brian Ulrich [Planning and Capital Projects Administrator, Office of Transportation]</li> <li>□ Samuel Snead [Director, Office of Transportation]</li> <li>□ Crystal McGill-Belk [Transit Administrator, Office of Transportation]</li> </ul>
Anne Arundel	03/31/2022	<ul style="list-style-type: none"> <li>□ Naomi Carrigan [Budget and Management Analyst, Office of Budget]</li> </ul>
Baltimore City	04/05/2022	<ul style="list-style-type: none"> <li>□ Kristen Ahearn [CIP Planner, Department of Planning]</li> </ul>
Baltimore City	04/13/2022	<ul style="list-style-type: none"> <li>□ Robert Cennane [Budget Director, Bureau of Management and Budget]</li> </ul>
Baltimore	04/13/2022	<ul style="list-style-type: none"> <li>□ Matthew Carpenter [Chief of Budget and Administration, Baltimore County]</li> </ul>
Carroll	04/06/2022	<ul style="list-style-type: none"> <li>□ Deborah Effingham [Bureau Chief, Budget Bureau]</li> <li>□ Ted Zaleski [Director, Department of Management and Budget]</li> </ul>
Harford	03/22/2022	<ul style="list-style-type: none"> <li>□ Glen Hebel [Chief Engineer, Bureau of Engineering]</li> <li>□ Robert Sandlass [Director Treasury, Treasury Department]</li> </ul>
Howard	04/29/2022*	<ul style="list-style-type: none"> <li>□ David Cookson [Planning Manager, Office of Transportation]</li> </ul>
Queen Anne's	04/26/2022	<ul style="list-style-type: none"> <li>□ Steve Cohoon [Public Facilities Manager, Department of Public Works]</li> <li>□ Shane Moore [Chief Roads Engineer, Department of Public Works]</li> </ul>

# Methodology: Tool Development

- Determined baseline values of local funding for transportation in each jurisdiction
- Determined how funds are used and projected moving forward
- Divided up funding by capital (system preservation versus expansion) and operating allocations
- Compiled information into an Excel-based tool that can be updated as needed



# Methodology: Growth Rates

- **Highway User Revenue (HUR) = 1.2%**
  - Average statewide (MD) annualized growth rate of VMT is 1.2%<sup>1</sup>.
  - Considered a reasonable estimate due to relationship between VMT and HUR funding.
  - Note: MDOT provided estimated HUR quantities for 2023-2027
- **General Funds / Other (i.e., Fees) = 3.5%**
  - Based on overall growth in economic activity and/or population, which most jurisdictions noted to be between 3-4%.
- **Bonds = 0%**
  - No growth associated with bonds.

<sup>1</sup>Source: MDOT's 2020 Greenhouse Gas Reduction Act Plan



# Tool Overview: Baseline Summary

County/Jurisdiction	Local Funding Base (Y/N)				Local CAPITAL Funding for Transportation								
	HUR	General Funds (e.g., Taxes)	Bonds	Other (e.g., Usage Fees)	\$				Subtotal	Growth Rate (User Input)			
					HUR	General Funds (e.g., Taxes)	Bonds	Other (e.g., Usage Fees)		HUR	General Funds (e.g., Taxes)	Bonds	Other (e.g., Usage Fees)
Anne Arundel County	x	x	x	x	\$ -	\$ 5,500,000	\$ 35,380,000	\$ 5,558,900	\$ 46,438,900	1.2%	3.5%	0.0%	3.5%
Baltimore City	x	x	x	x	\$ 4,500,000	\$ 9,505,000	\$ 23,650,000	\$ -	\$ 37,655,000	1.2%	3.5%	0.0%	3.5%
Baltimore County	x	x	x	x	\$ -	\$ 6,400,000	\$ 47,640,000	\$ 1,100,000	\$ 55,140,000	1.2%	3.5%	0.0%	3.5%
Carroll County	x	x	x	x	\$ 2,422,195	\$ -	\$ 15,017,700	\$ 4,746,000	\$ 22,185,895	1.2%	3.5%	0.0%	3.5%
Harford County	x	x	x	x	\$ -	\$ 11,021,179	\$ 4,270,000	\$ -	\$ 15,291,179	1.2%	3.5%	0.0%	3.5%
Howard County	x	x	x	x	\$ 3,571,000	\$ 12,072,000	\$ 7,915,000	\$ 2,400,000	\$ 25,958,000	1.2%	3.5%	0.0%	3.5%
Queen Anne's County	x	x	x	x	\$ -	\$ 110,000	\$ 428,000	\$ 720,000	\$ 1,258,000	1.2%	3.5%	0.0%	3.5%

KEY	
HUR	= Highway User Revenue
	= User Input Field
	= Capital Budget
	= Operating Budget

Local OPERATING Funding for Transportation									Division of Funding				
\$				Subtotal	Growth Rate				% Total Breakdown			Capital % Breakdown	
HUR	General Funds (e.g., Taxes)	Bonds	Other (e.g., Usage Fees)		HUR	General Funds (e.g., Taxes)	Bonds	Other (e.g., Usage Fees)	System Preservation	Expansion	Operations	System Preservation	Expansion
\$ 6,520,727	\$ 33,889,400	\$ -	\$ -	\$ 40,410,127	1.2%	3.5%	0.0%	3.5%	35%	18%	47%	65%	35%
\$ 151,800,000	\$ -		\$ 40,401,000	\$ 192,201,000	1.2%	3.5%	0.0%	3.5%	16%	0%	84%	100%	0%
\$ 8,868,000	\$ 41,666,595	\$ -	\$ -	\$ 50,534,595	1.2%	3.5%	0.0%	3.5%	47%	5%	48%	90%	10%
\$ -	\$ 12,208,324	\$ -	\$ -	\$ 12,208,324	1.2%	3.5%	0.0%	3.5%	65%	0%	35%	100%	0%
\$ 3,028,222	\$ 38,008,000	\$ -	\$ 15,892,000	\$ 56,928,222	1.2%	3.5%	0.0%	3.5%	20%	1%	79%	95%	5%
\$ -	\$ 41,433,000	\$ -	\$ 1,423,000	\$ 42,856,000	1.2%	3.5%	0.0%	3.5%	25%	13%	62%	66%	34%
\$ 1,147,669	\$ 4,100,496	\$ -	\$ -	\$ 5,248,165	1.2%	3.5%	0.0%	3.5%	19%	0%	81%	100%	0%

# Baseline: Local Funding Base

- “Baseline Summary” tab, Columns C to F
- Identifies the types of local funding sources used by each jurisdiction for transportation

	B	C	D	E	F
County/Jurisdiction	Local Funding Base (Y/N)				
	HUR	General Funds (e.g., Taxes)	Bonds	Other (e.g., Usage Fees)	
Anne Arundel County	x	x	x	x	
Baltimore City	x	x	x	x	
Baltimore County	x	x	x	x	
Carroll County	x	x	x	x	
Harford County	x	x	x	x	
Howard County	x	x	x	x	
Queen Anne's County	x	x	x	x	
KEY					
HUR	= Highway User Revenue				
	= User Input Field				
	= Capital Budget				
	= Operating Budget				

# Baseline: Capital Base

- “Baseline Summary” tab, Columns G to O
- Shows the estimated baseline of local funding allocated to capital budget items, by funding type and jurisdiction
- Assumed growth rates for capital portion of local funding by funding type and jurisdiction – user input fields

B	G	H	I	J	K	L	M	N	O
	Local CAPITAL Funding for Transportation								
County/Jurisdiction	\$				Subtotal	Growth Rate (User Input)			
	HUR	General Funds (e.g., Taxes)	Bonds	Other (e.g., Usage Fees)		HUR	General Funds (e.g., Taxes)	Bonds	Other (e.g., Usage Fees)
Anne Arundel County	\$ -	\$ 5,500,000	\$ 35,380,000	\$ 5,558,900	\$ 46,438,900	1.2%	3.5%	0.0%	3.5%
Baltimore City	\$ 4,500,000	\$ 9,505,000	\$ 23,650,000	\$ -	\$ 37,655,000	1.2%	3.5%	0.0%	3.5%
Baltimore County	\$ -	\$ 6,400,000	\$ 47,640,000	\$ 1,100,000	\$ 55,140,000	1.2%	3.5%	0.0%	3.5%
Carroll County	\$ 2,422,195	\$ -	\$ 15,017,700	\$ 4,746,000	\$ 22,185,895	1.2%	3.5%	0.0%	3.5%
Harford County	\$ -	\$ 11,021,179	\$ 4,270,000	\$ -	\$ 15,291,179	1.2%	3.5%	0.0%	3.5%
Howard County	\$ 3,571,000	\$ 12,072,000	\$ 7,915,000	\$ 2,400,000	\$ 25,958,000	1.2%	3.5%	0.0%	3.5%
Queen Anne's County	\$ -	\$ 110,000	\$ 428,000	\$ 720,000	\$ 1,258,000	1.2%	3.5%	0.0%	3.5%

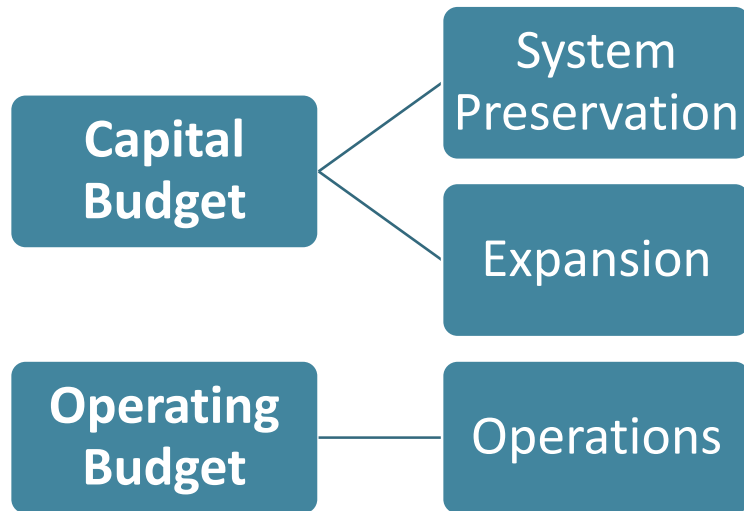
# Baseline: Operating Base

- “Baseline Summary” tab, Columns P to X
- Shows the estimated baseline of local funding allocated to operating budget items, by funding type and jurisdiction
- Assumed growth rates for operating portion of local funding by funding type and jurisdiction – user input fields

B	P	Q	R	S	T	U	V	W	X
	Local OPERATING Funding for Transportation								
County/Jurisdiction	\$				Subtotal	Growth Rate			
	HUR	General Funds (e.g., Taxes)	Bonds	Other (e.g., Usage Fees)		HUR	General Funds (e.g., Taxes)	Bonds	Other (e.g., Usage Fees)
Anne Arundel County	\$ 6,520,727	\$ 33,889,400	\$ -	\$ -	\$ 40,410,127	1.2%	3.5%	0.0%	3.5%
Baltimore City	\$ 151,800,000	\$ -		\$ 40,401,000	\$ 192,201,000	1.2%	3.5%	0.0%	3.5%
Baltimore County	\$ 8,868,000	\$ 41,666,595	\$ -	\$ -	\$ 50,534,595	1.2%	3.5%	0.0%	3.5%
Carroll County	\$ -	\$ 12,208,324	\$ -	\$ -	\$ 12,208,324	1.2%	3.5%	0.0%	3.5%
Harford County	\$ 3,028,222	\$ 38,008,000	\$ -	\$ 15,892,000	\$ 56,928,222	1.2%	3.5%	0.0%	3.5%
Howard County	\$ -	\$ 41,433,000	\$ -	\$ 1,423,000	\$ 42,856,000	1.2%	3.5%	0.0%	3.5%
Queen Anne's County	\$ 1,147,669	\$ 4,100,496	\$ -	\$ -	\$ 5,248,165	1.2%	3.5%	0.0%	3.5%

# Baseline: Capital vs. Operating

- “Baseline Summary” tab, Columns Y to AC
- Assumed division of local funding between capital and operating
- Assumed division of local capital funds by type of use: system preservation vs. expansion



	B	Y	Z	AA	AB	AC
	Division of Funding					
County/Jurisdiction	% Total Breakdown			Capital % Breakdown		
	System Preservation	Expansion	Operations	System Preservation	Expansion	
Anne Arundel County	35%	18%	47%	65%	35%	
Baltimore City	16%	0%	84%	100%	0%	
Baltimore County	47%	5%	48%	90%	10%	
Carroll County	65%	0%	35%	100%	0%	
Harford County	20%	1%	79%	95%	5%	
Howard County	25%	13%	62%	66%	34%	
Queen Anne's County	19%	0%	81%	100%	0%	



# Tool Overview: 2050 Projection

## FY2050 Projection of Local Funding for Transportation

Capital Budget														
System Preservation														
County/Jurisdiction	2022	2023	2024	2025	2026	2027	2028	2029	2030	2031	2032	2033	2034	
Anne Arundel County	\$ 30,397,159	\$ 33,093,682	\$ 33,889,470	\$ 34,694,437	\$ 35,480,820	\$ 35,827,716	\$ 36,177,487	\$ 36,538,376	\$ 36,910,758	\$ 37,295,023	\$ 37,691,572	\$ 38,100,822	\$ 38,523,203	
Baltimore City	\$ 37,655,000	\$ 61,337,068	\$ 67,169,355	\$ 73,537,917	\$ 79,198,144	\$ 80,251,558	\$ 81,190,423	\$ 82,149,642	\$ 83,129,777	\$ 84,131,408	\$ 85,155,135	\$ 86,201,575	\$ 87,271,365	
Baltimore County	\$ 49,626,000	\$ 54,370,520	\$ 55,554,262	\$ 56,840,484	\$ 57,994,680	\$ 58,406,666	\$ 58,777,422	\$ 59,159,081	\$ 59,551,999	\$ 59,956,546	\$ 60,373,102	\$ 60,802,063	\$ 61,243,836	
Carroll County	\$ 22,185,895	\$ 21,616,371	\$ 22,193,070	\$ 22,708,323	\$ 23,229,805	\$ 23,454,151	\$ 23,685,034	\$ 23,923,225	\$ 24,168,971	\$ 24,422,526	\$ 24,684,155	\$ 24,954,131	\$ 25,232,735	
Harford County	\$ 14,568,985	\$ 15,602,608	\$ 16,136,709	\$ 16,671,314	\$ 17,219,699	\$ 17,654,250	\$ 18,104,125	\$ 18,569,438	\$ 19,050,726	\$ 19,548,544	\$ 20,063,467	\$ 20,596,090	\$ 21,147,027	
Howard County	\$ 17,203,500	\$ 16,147,535	\$ 16,694,977	\$ 17,254,580	\$ 17,826,769	\$ 18,236,984	\$ 18,654,882	\$ 19,086,965	\$ 19,533,724	\$ 19,995,667	\$ 20,473,320	\$ 20,967,228	\$ 21,477,954	
Queen Anne's County	\$ 1,258,000	\$ 1,531,576	\$ 1,607,492	\$ 1,699,742	\$ 1,777,799	\$ 1,811,135	\$ 1,850,405	\$ 1,890,941	\$ 1,932,784	\$ 1,975,979	\$ 2,020,573	\$ 2,066,612	\$ 2,114,146	
Expansion														
County/Jurisdiction	2022	2023	2024	2025	2026	2027	2028	2029	2030	2031	2032	2033	2034	
Anne Arundel County	\$ 16,041,741	\$ 17,464,798	\$ 17,884,766	\$ 18,309,578	\$ 18,724,582	\$ 18,907,652	\$ 19,092,240	\$ 19,282,695	\$ 19,479,215	\$ 19,682,006	\$ 19,891,281	\$ 20,107,257	\$ 20,330,164	
Baltimore City	\$ -	\$ -	\$ -	\$ -	\$ -	\$ -	\$ -	\$ -	\$ -	\$ -	\$ -	\$ -	\$ -	
Baltimore County	\$ 5,514,000	\$ 6,041,169	\$ 6,172,696	\$ 6,315,609	\$ 6,443,853	\$ 6,489,630	\$ 6,530,825	\$ 6,573,231	\$ 6,616,889	\$ 6,661,838	\$ 6,708,122	\$ 6,755,785	\$ 6,804,871	
Carroll County	\$ -	\$ -	\$ -	\$ -	\$ -	\$ -	\$ -	\$ -	\$ -	\$ -	\$ -	\$ -	\$ -	
Harford County	\$ 722,194	\$ 773,431	\$ 799,907	\$ 826,408	\$ 853,592	\$ 875,133	\$ 897,433	\$ 920,499	\$ 944,357	\$ 969,034	\$ 994,559	\$ 1,020,961	\$ 1,048,272	
Howard County	\$ 8,754,500	\$ 8,217,142	\$ 8,495,724	\$ 8,780,494	\$ 9,071,668	\$ 9,280,418	\$ 9,493,078	\$ 9,712,956	\$ 9,940,302	\$ 10,175,375	\$ 10,418,443	\$ 10,669,782	\$ 10,929,680	
Queen Anne's County	\$ -	\$ -	\$ -	\$ -	\$ -	\$ -	\$ -	\$ -	\$ -	\$ -	\$ -	\$ -	\$ -	
Operating Budget														
County/Jurisdiction	2022	2023	2024	2025	2026	2027	2028	2029	2030	2031	2032	2033	2034	
Anne Arundel County	\$ 40,410,127	\$ 38,323,486	\$ 40,260,453	\$ 42,240,388	\$ 44,227,462	\$ 45,663,238	\$ 47,136,946	\$ 48,660,740	\$ 50,236,355	\$ 51,865,586	\$ 53,550,292	\$ 55,292,396	\$ 57,093,887	
Baltimore City	\$ 192,201,000	\$ 183,965,642	\$ 213,441,200	\$ 245,643,757	\$ 274,220,139	\$ 279,271,114	\$ 283,725,993	\$ 288,272,957	\$ 292,914,464	\$ 297,653,047	\$ 302,491,319	\$ 307,431,976	\$ 312,477,797	
Baltimore County	\$ 50,534,595	\$ 47,715,737	\$ 50,181,528	\$ 52,795,790	\$ 55,321,265	\$ 57,138,196	\$ 58,962,052	\$ 60,847,631	\$ 62,797,068	\$ 64,812,573	\$ 66,896,431	\$ 69,051,010	\$ 71,278,757	
Carroll County	\$ 12,208,324	\$ 13,563,686	\$ 14,228,670	\$ 14,872,009	\$ 15,531,369	\$ 16,040,257	\$ 16,566,232	\$ 17,110,192	\$ 17,672,759	\$ 18,254,581	\$ 18,856,326	\$ 19,478,686	\$ 20,122,377	
Harford County	\$ 56,928,222	\$ 58,389,280	\$ 60,942,449	\$ 63,513,904	\$ 66,156,088	\$ 68,370,944	\$ 70,663,770	\$ 73,035,643	\$ 75,489,315	\$ 78,027,635	\$ 80,653,550	\$ 83,370,112	\$ 86,180,478	
Howard County	\$ 42,856,000	\$ 46,784,803	\$ 48,835,486	\$ 50,940,505	\$ 53,101,761	\$ 54,885,278	\$ 56,714,589	\$ 58,606,827	\$ 60,564,179	\$ 62,588,912	\$ 64,683,371	\$ 66,849,981	\$ 69,091,256	
Queen Anne's County	\$ 5,248,165	\$ 5,264,136	\$ 5,603,950	\$ 6,012,720	\$ 6,363,113	\$ 6,527,802	\$ 6,718,148	\$ 6,914,699	\$ 7,117,666	\$ 7,327,268	\$ 7,543,732	\$ 7,767,292	\$ 7,998,192	

# Projections

- “2050 Projection” tab
- Uses growth rates in Baseline summary to create local funding projections to FY 2050
  - Capital vs. Operating
  - Capital divided into system preservation and expansion

## FY2050 Projection of Local Funding for Transportation

Capital Budget						
System Preservation						
County/Jurisdiction	2022	2023	2024	2025	2026	
Anne Arundel County	\$ 30,397,159	\$ 33,093,682	\$ 33,889,470	\$ 34,694,437	\$ 35,480,820	
Baltimore City	\$ 37,655,000	\$ 61,337,068	\$ 67,169,355	\$ 73,537,917	\$ 79,198,144	
Baltimore County	\$ 49,626,000	\$ 54,370,520	\$ 55,554,262	\$ 56,840,484	\$ 57,994,680	
Carroll County	\$ 22,185,895	\$ 21,616,371	\$ 22,193,070	\$ 22,708,323	\$ 23,229,805	
Harford County	\$ 14,568,985	\$ 15,602,608	\$ 16,136,709	\$ 16,671,314	\$ 17,219,699	
Howard County	\$ 17,203,500	\$ 16,147,535	\$ 16,694,977	\$ 17,254,580	\$ 17,826,769	
Queen Anne's County	\$ 1,258,000	\$ 1,531,576	\$ 1,607,492	\$ 1,699,742	\$ 1,777,799	
Expansion						
County/Jurisdiction	2022	2023	2024	2025	2026	
Anne Arundel County	\$ 16,041,741	\$ 17,464,798	\$ 17,884,766	\$ 18,309,578	\$ 18,724,582	
Baltimore City	\$ -	\$ -	\$ -	\$ -	\$ -	
Baltimore County	\$ 5,514,000	\$ 6,041,169	\$ 6,172,696	\$ 6,315,609	\$ 6,443,853	
Carroll County	\$ -	\$ -	\$ -	\$ -	\$ -	
Harford County	\$ 722,194	\$ 773,431	\$ 799,907	\$ 826,408	\$ 853,592	
Howard County	\$ 8,754,500	\$ 8,217,142	\$ 8,495,724	\$ 8,780,494	\$ 9,071,668	
Queen Anne's County	\$ -	\$ -	\$ -	\$ -	\$ -	
Operating Budget						
County/Jurisdiction	2022	2023	2024	2025	2026	
Anne Arundel County	\$ 40,410,127	\$ 38,323,486	\$ 40,260,453	\$ 42,240,388	\$ 44,227,462	
Baltimore City	\$ 192,201,000	\$ 183,965,642	\$ 213,441,200	\$ 245,643,757	\$ 274,220,139	
Baltimore County	\$ 50,534,595	\$ 47,715,737	\$ 50,181,528	\$ 52,795,790	\$ 55,321,265	
Carroll County	\$ 12,208,324	\$ 13,563,686	\$ 14,228,670	\$ 14,872,009	\$ 15,531,369	
Harford County	\$ 56,928,222	\$ 58,389,280	\$ 60,942,449	\$ 63,513,904	\$ 66,156,088	
Howard County	\$ 42,856,000	\$ 46,784,803	\$ 48,835,486	\$ 50,940,505	\$ 53,101,761	
Queen Anne's County	\$ 5,248,165	\$ 5,264,136	\$ 5,603,950	\$ 6,012,720	\$ 6,363,113	

# Questions?

