



2018-2019 Maryland Travel Survey (MTS) Results – Analysis of Daily Travel in the Baltimore Region

Technical Committee

December 7, 2021

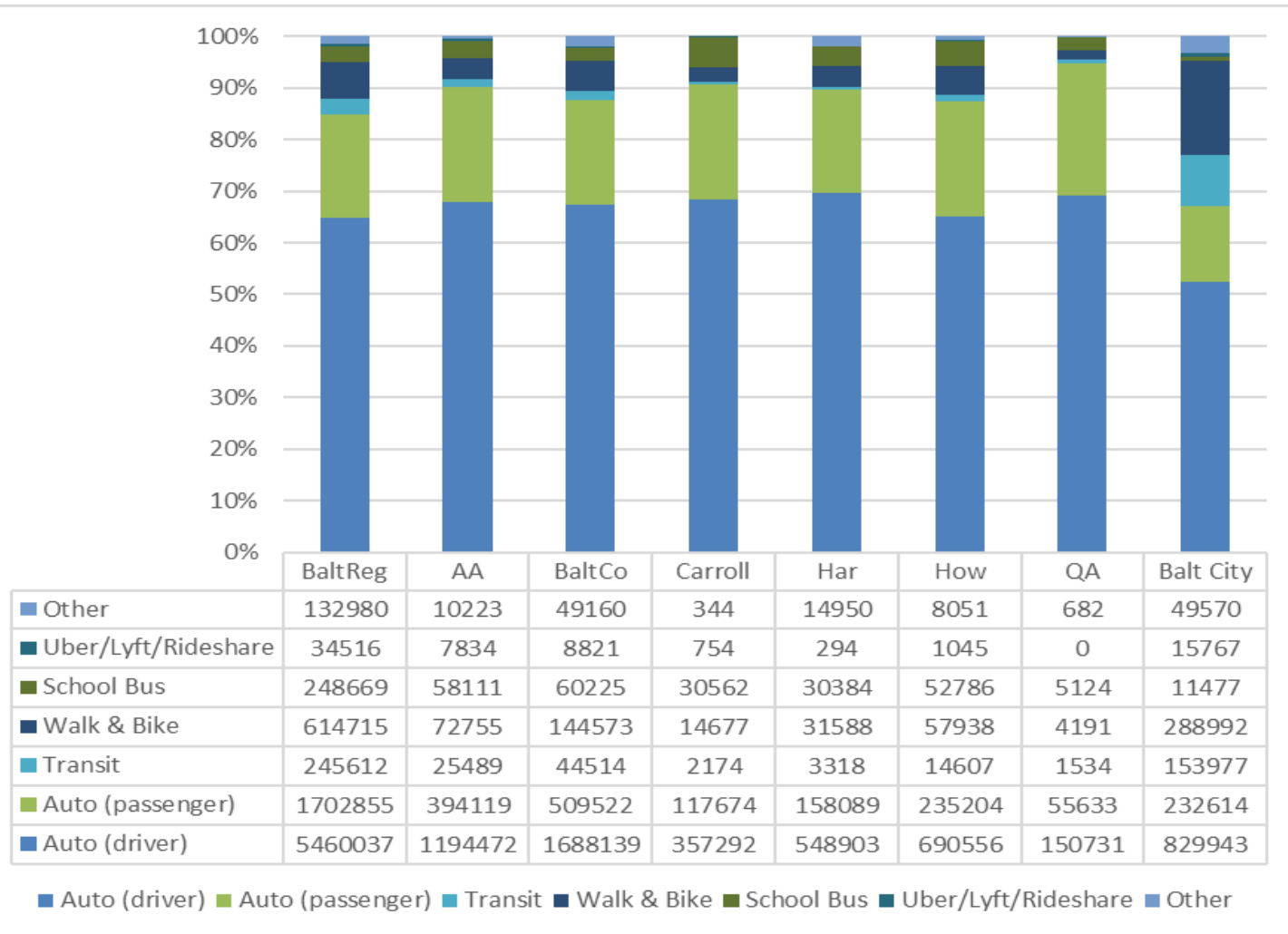


Presentation Outline



- **Jurisdictional Level Analysis**
 - Travel Mode
 - Trip Purpose
- **Household Level Analysis**
 - Daily HH Trips by Travel Mode
 - Daily HH Trips by Trip Purpose
 - Daily HH Miles by Travel Mode
 - Daily HH Miles by Trip Purpose

Daily Trips by Travel Mode by Jurisdiction (Percent Mode of Travel) Part 1a

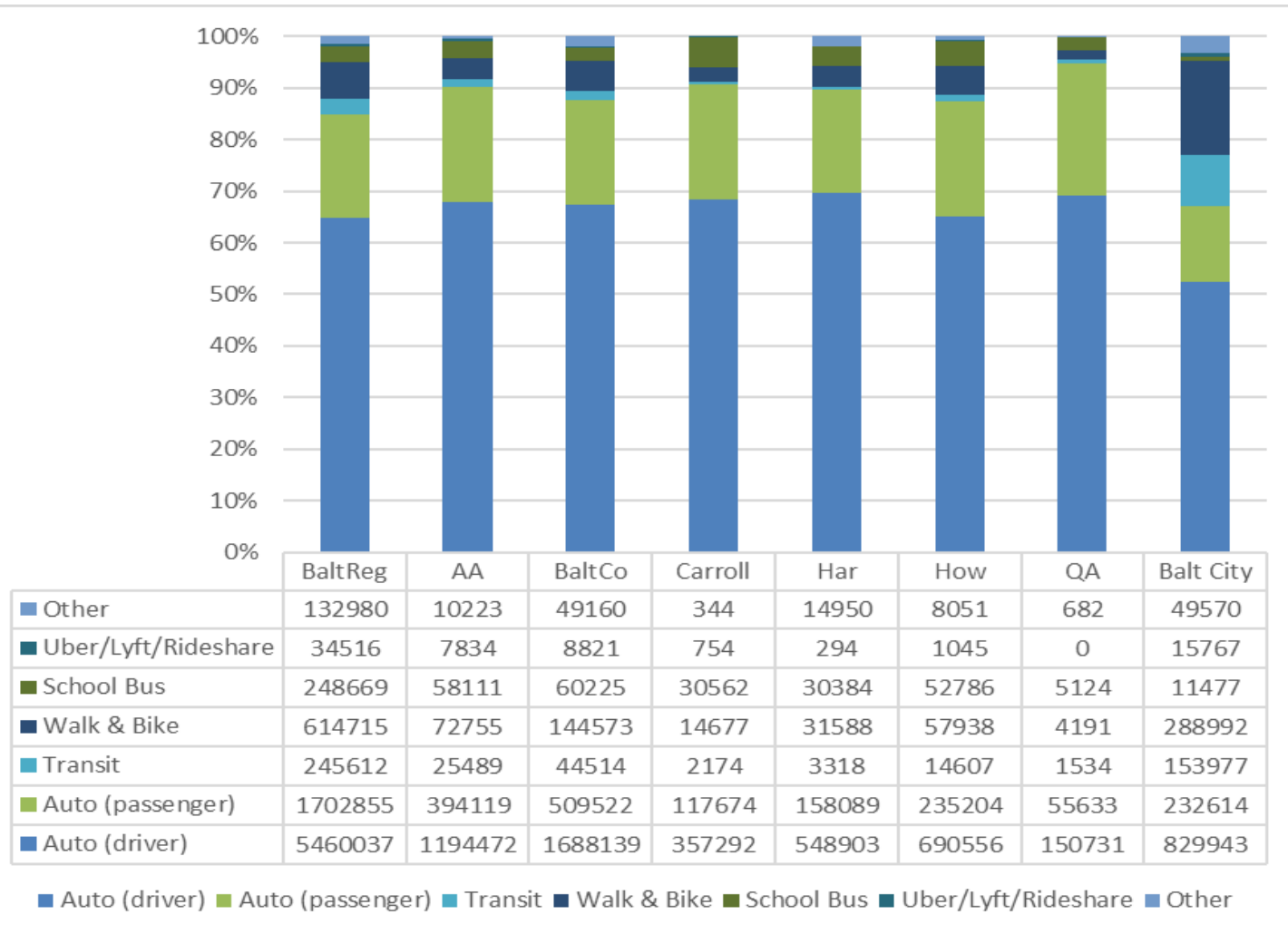


Summary of Daily Trips by Travel Mode by Jurisdiction (Percent Mode of Travel)

Part 1a

- Almost two-thirds (64.7%) of Baltimore region trips are made by automobile with only the driver (SOV). The highest Auto (driver) shares are in more rural counties: Harford (69.7%), Queen Anne's (69.2%), and Carroll (68.3%).
- Auto (driver) share is slightly lower in Anne Arundel (67.8%) and Baltimore County (67.4%). It is somewhat lower in Howard (65.1%)
- Auto (driver) share is significantly lower in Baltimore City (52.5%)

Daily Trips by Travel Mode by Jurisdiction (Percent Mode of Travel) Part 1b

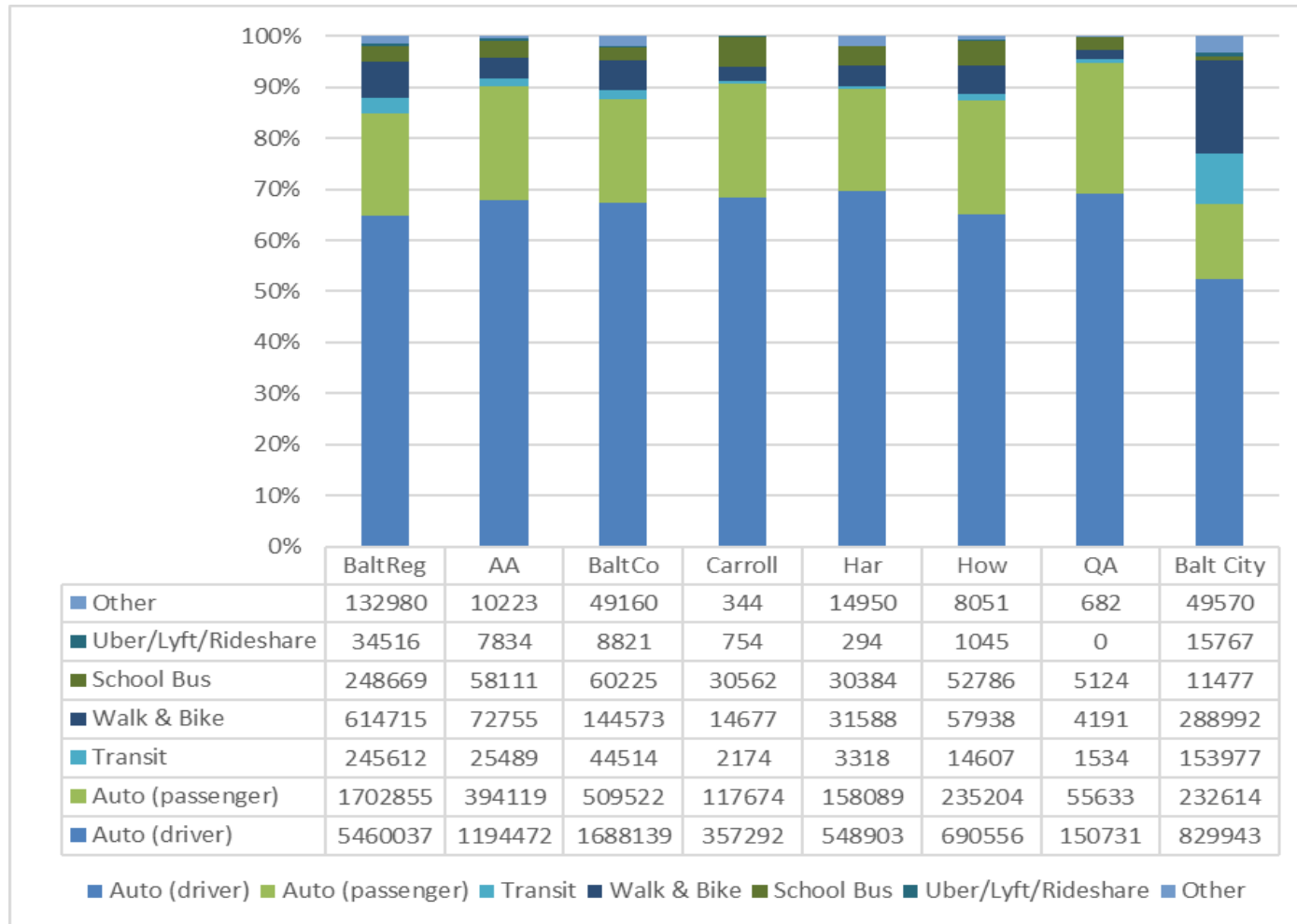


Summary of Daily Trips by Travel Mode by Jurisdiction (Percent Mode of Travel)

Part 1b

- One-fifth (20.2%) of trips are made by automobile as a passenger, but the Auto (passenger) share is higher in some counties: Queen Anne's (25.5%), Carroll (22.5%), Anne Arundel (22.4%), and Howard (22.2%).
- It is slightly higher in Baltimore County (20.3%)
- Auto (passenger) share is slightly lower in Harford (20.1%).
- Auto (passenger) share is somewhat lower in Baltimore City (14.7%)

Daily Trips by Travel Mode by Jurisdiction (Percent Mode of Travel) Part 2

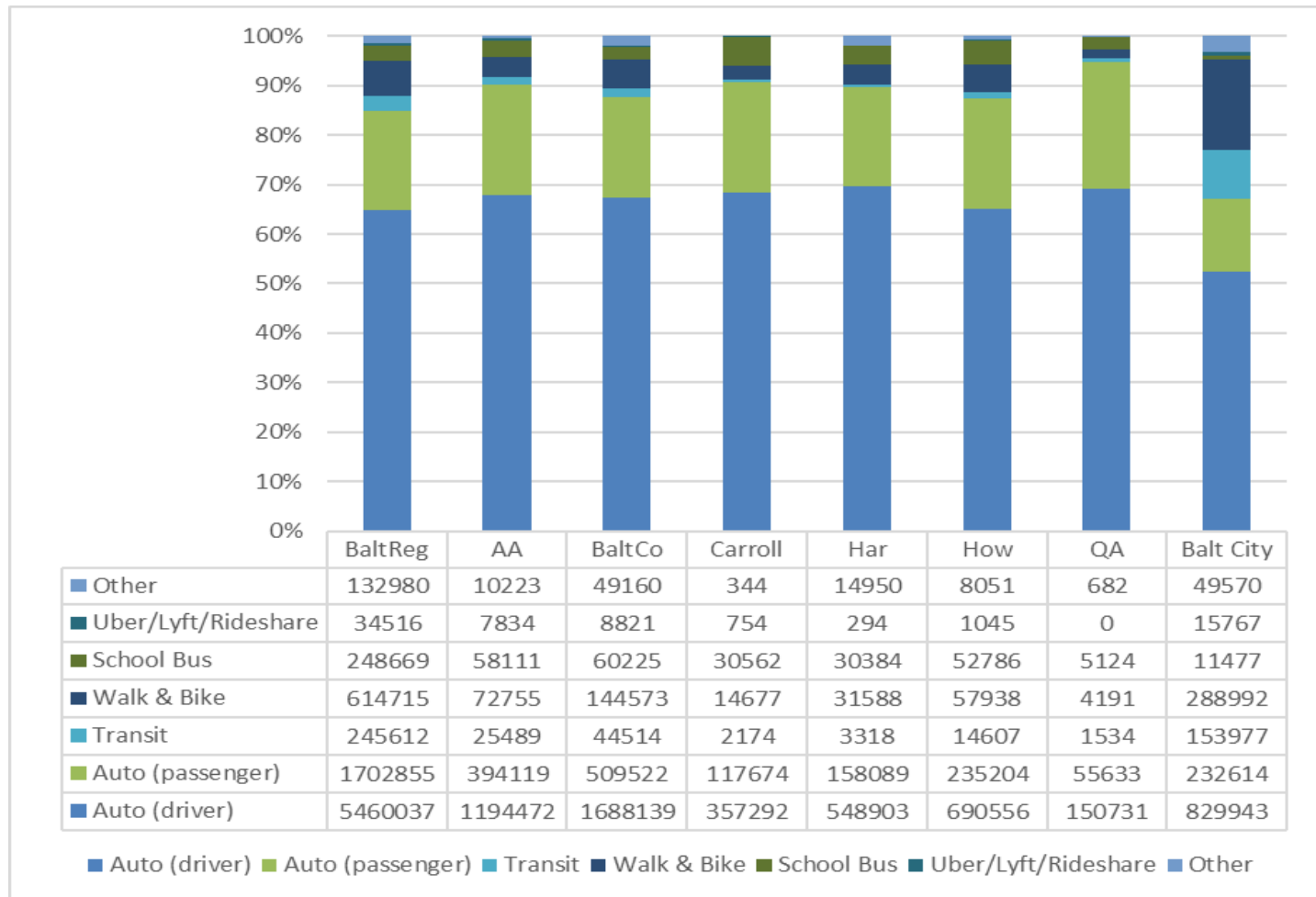


Summary of Daily Trips by Travel Mode by Jurisdiction (Percent Mode of Travel)

Part 2

- Almost three percent (2.9%) of Baltimore region trips are made by public transit. The regional transit share is largely driven by Baltimore City (9.7%) and suburban jurisdictions such as Baltimore County (1.8%), Anne Arundel (1.4%), and Howard (1.4%).
- Transit share in more rural counties, Queen Anne's (0.7%), Carroll (0.4%), and Harford (0.4%), is significantly below the regional average.

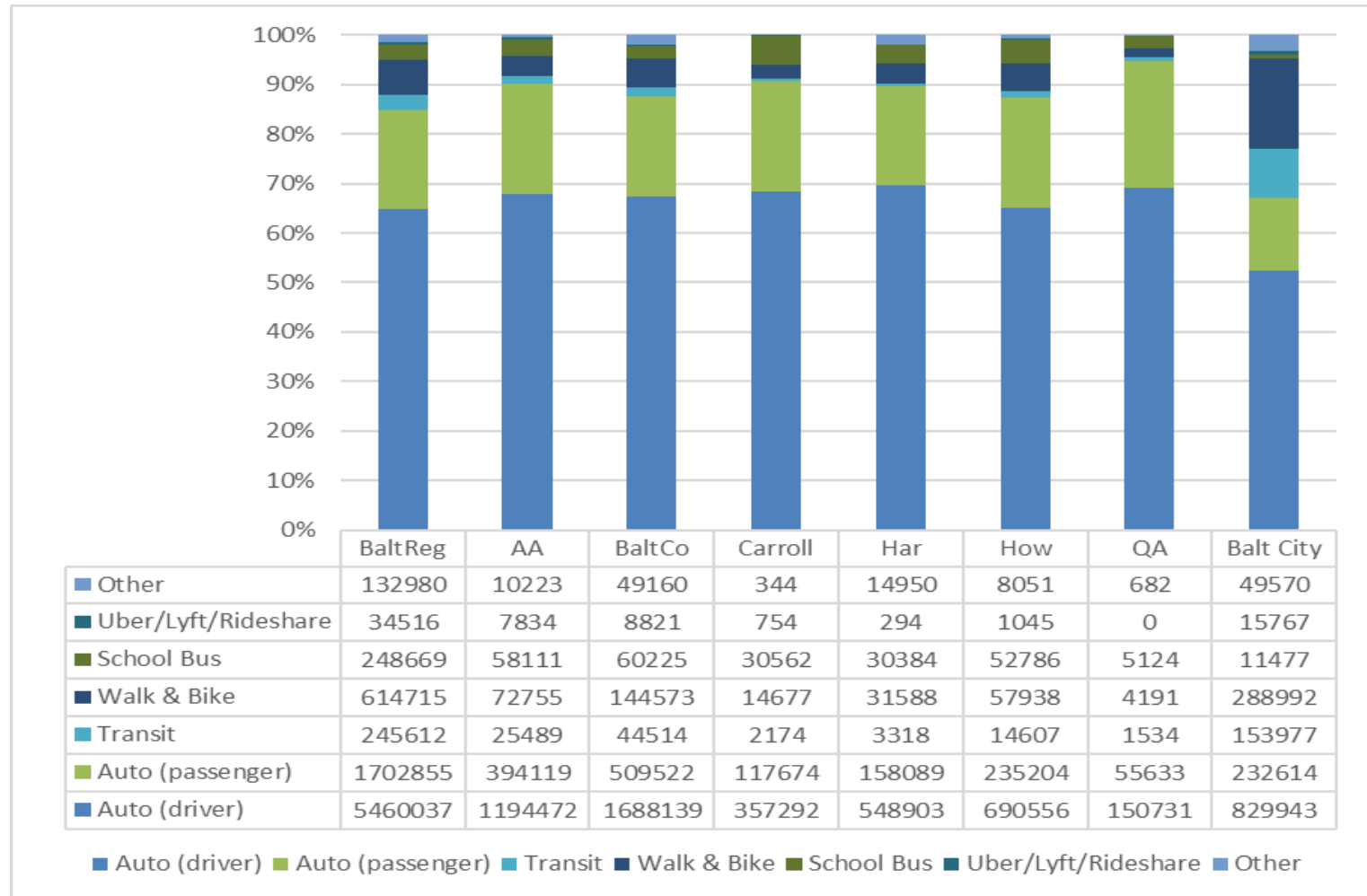
Daily Trips by Travel Mode by Jurisdiction (Percent Mode of Travel) Part 3



Summary of Daily Trips by Travel Mode by Jurisdiction(Percent Mode of Travel) Part 3

- The regional Walk and Bike share (7.3%) is largely driven by Baltimore City (18.3%), Baltimore County (5.8%), Howard County (5.5%), Anne Arundel County (4.1%), and Harford County (4.0%).
- Walk and Bike share in more rural counties, Carroll (2.8%) and Queen Anne's (1.9%), is significantly below the regional average.

Daily Trips by Travel Mode by Jurisdiction (Percent Mode of Travel) Part 4

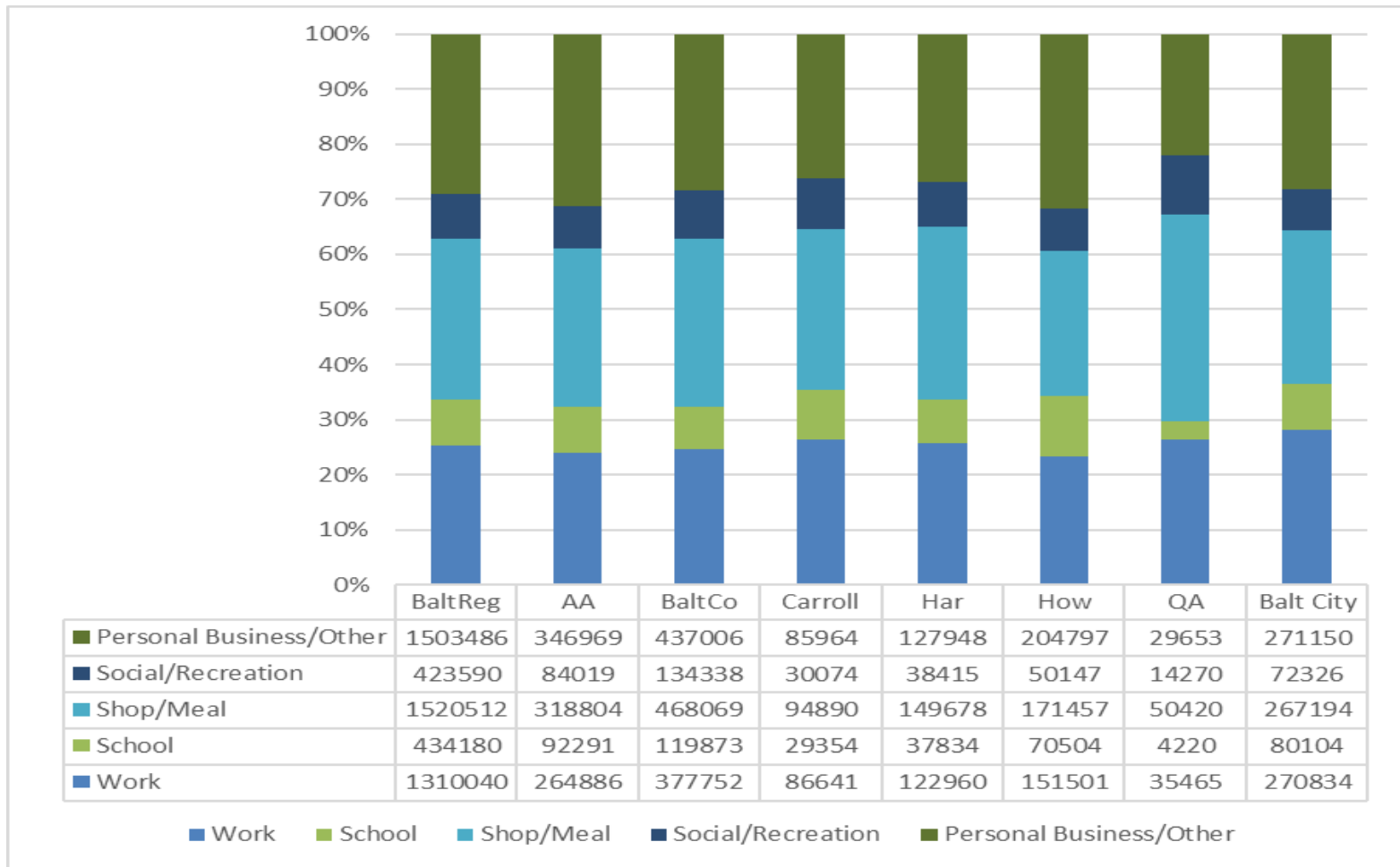


Summary of Daily Trips by Travel Mode by Jurisdiction (Percent Mode of Travel)

Part 4

- Less than one-half percent (0.4%) of Baltimore region trips are made using Uber, Lyft, or other Rideshare Companies. The share in Anne Arundel and Baltimore Counties is at the regional average (0.4%). The share in Baltimore City is slightly higher at one percent (1%).
- The share in Carrol and Howard counties is slightly lower at one tenth of one percent (0.1%).
- No Rideshare trips (0.0%) were reported in Harford or Queen Anne's Counties.

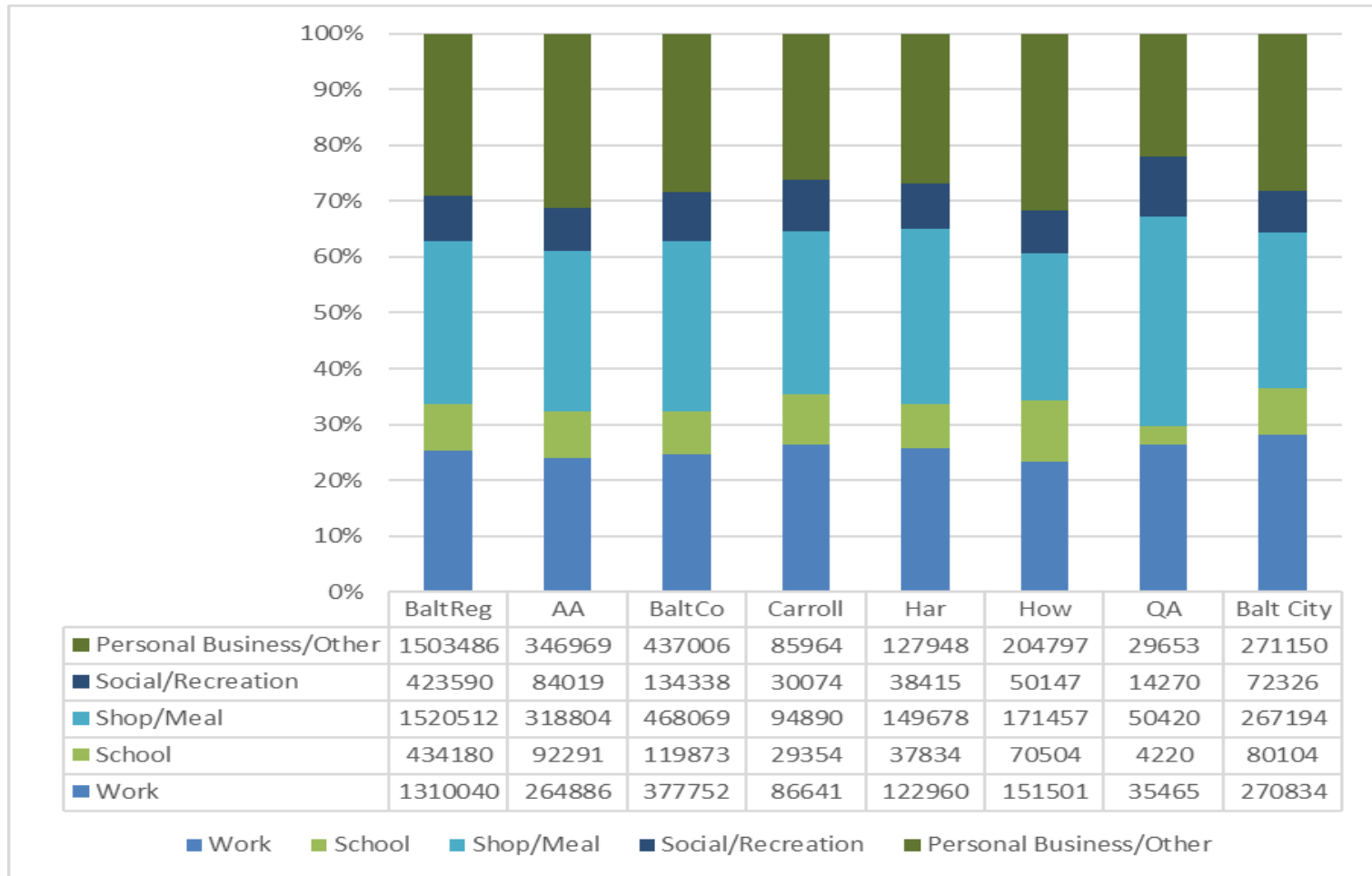
Daily Trips by Trip Purpose by Jurisdiction (Percent Purpose of Travel) Part 1



Summary of Daily Trips by Trip Purpose by Jurisdiction (Percent Purpose of Travel) Part 1

- Approximately one-quarter (25.2%) of all trips were trips to work.
- The share is higher in Baltimore City (28.2%), Carroll County (26.5%), Queen Anne's County (26.5%), and Harford County (25.8%).
- The share is lower in Baltimore County (24.6%), Anne Arundel County (23.9%), and Howard County (23.4%).

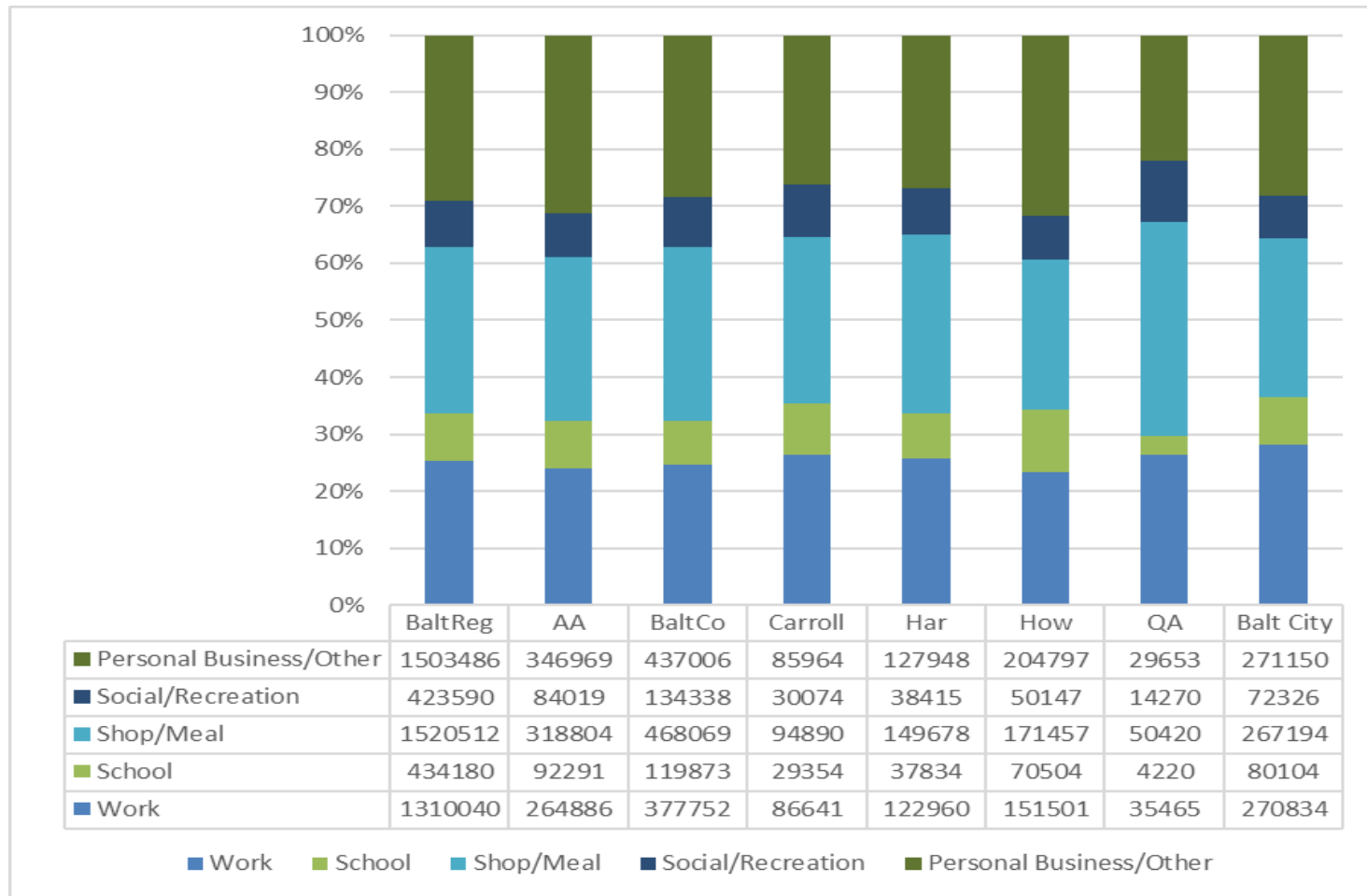
Daily Trips by Trip Purpose by Jurisdiction (Percent Purpose of Travel) Part 2



Summary of Daily Trips by Trip Purpose by Jurisdiction (Percent Purpose of Travel) Part 2

- Trips for Shopping and Meals represent just under 30 percent (29.3%) of trips in the region.
- The share is higher in Queen Anne's County (37.6%), Harford County (31.4%), and Baltimore County (30.5%)
- The share is slightly lower in Carroll County (29.0%)
- It is somewhat lower in Anne Arundel County (28.8%), Baltimore City (27.8%), and Howard County (26.4%)

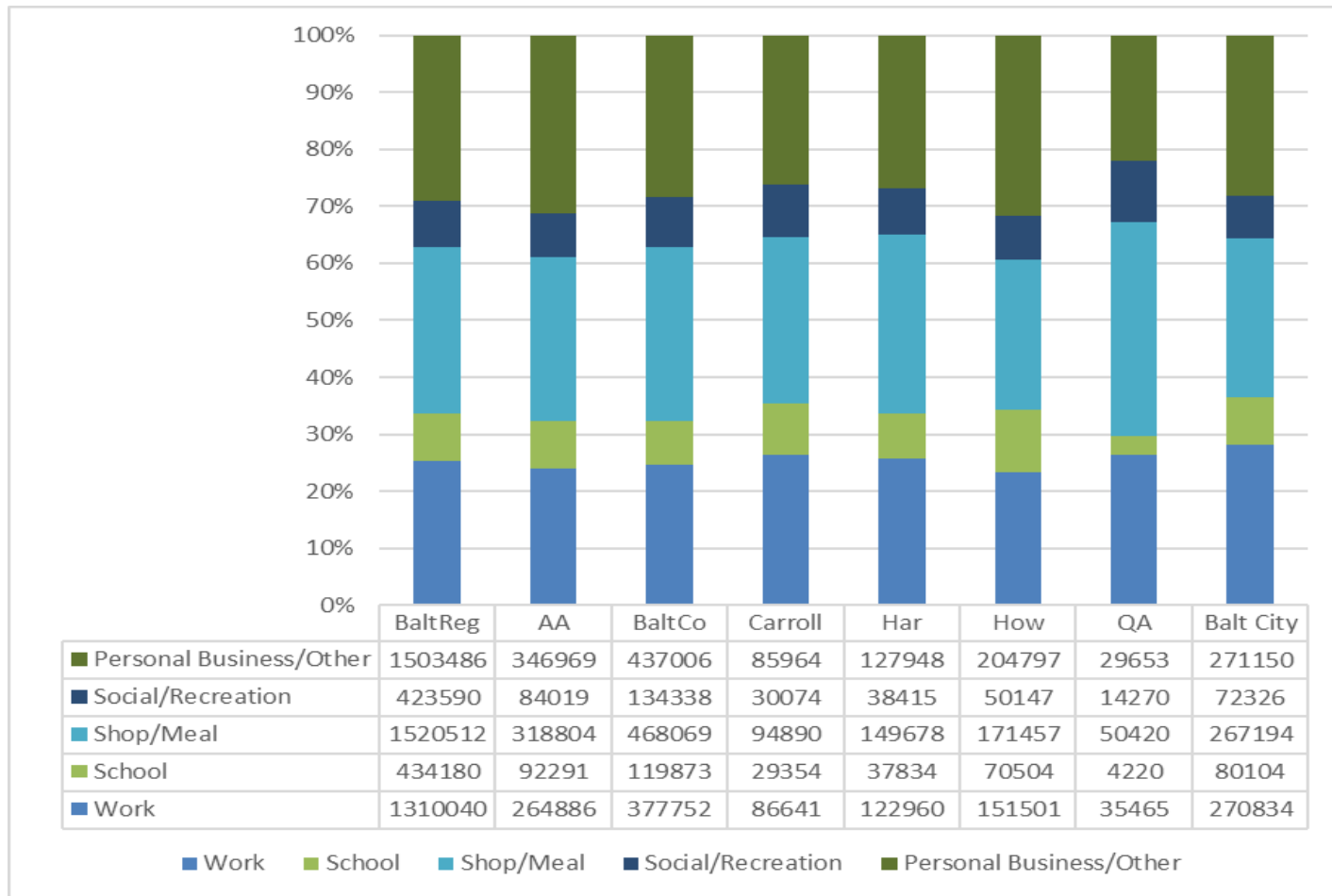
Daily Trips by Trip Purpose by Jurisdiction (Percent Purpose of Travel) Part 3



Summary of Daily Trips by Trip Purpose by Jurisdiction (Percent Purpose of Travel) Part 3

- Social and Recreational trips represent just over 8 percent (8.2%) of trips in the region.
- The share is higher in Queen Anne's County (10.6%), Carroll County (9.2%), and Baltimore County (8.7%).
- The share is slightly lower in Harford County (8.1%).
- It is somewhat lower in Howard County (7.7%), Anne Arundel County (7.6%), and Baltimore City (7.5%).

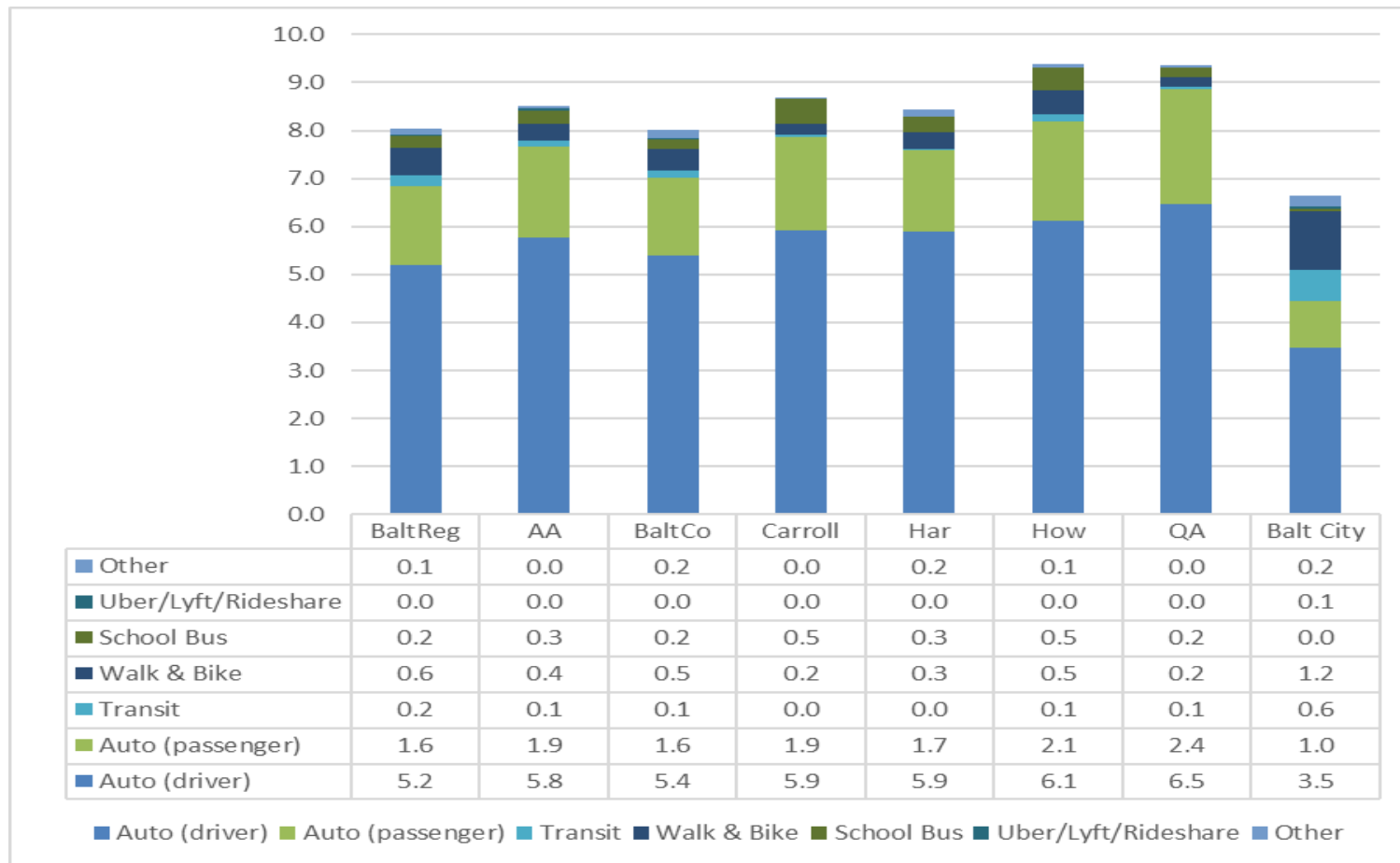
Daily Trips by Trip Purpose by Jurisdiction (Percent Purpose of Travel) Part 4



Summary of Daily Trips by Trip Purpose by Jurisdiction (Percent Purpose of Travel) Part 4

- Trips for Personal Business and Other Purposes represent fewer than thirty percent (29.0%) of trips in the region
- The share is somewhat higher in Howard County (31.6%) and Anne Arundel County (31.3%)
- The share is slightly lower in Baltimore County (28.4%) and Baltimore City (28.2%)
- It is somewhat lower in Harford County (26.8%) and Carroll County (26.3%)
- It is significantly lower in Queen Anne's County (22.1%)

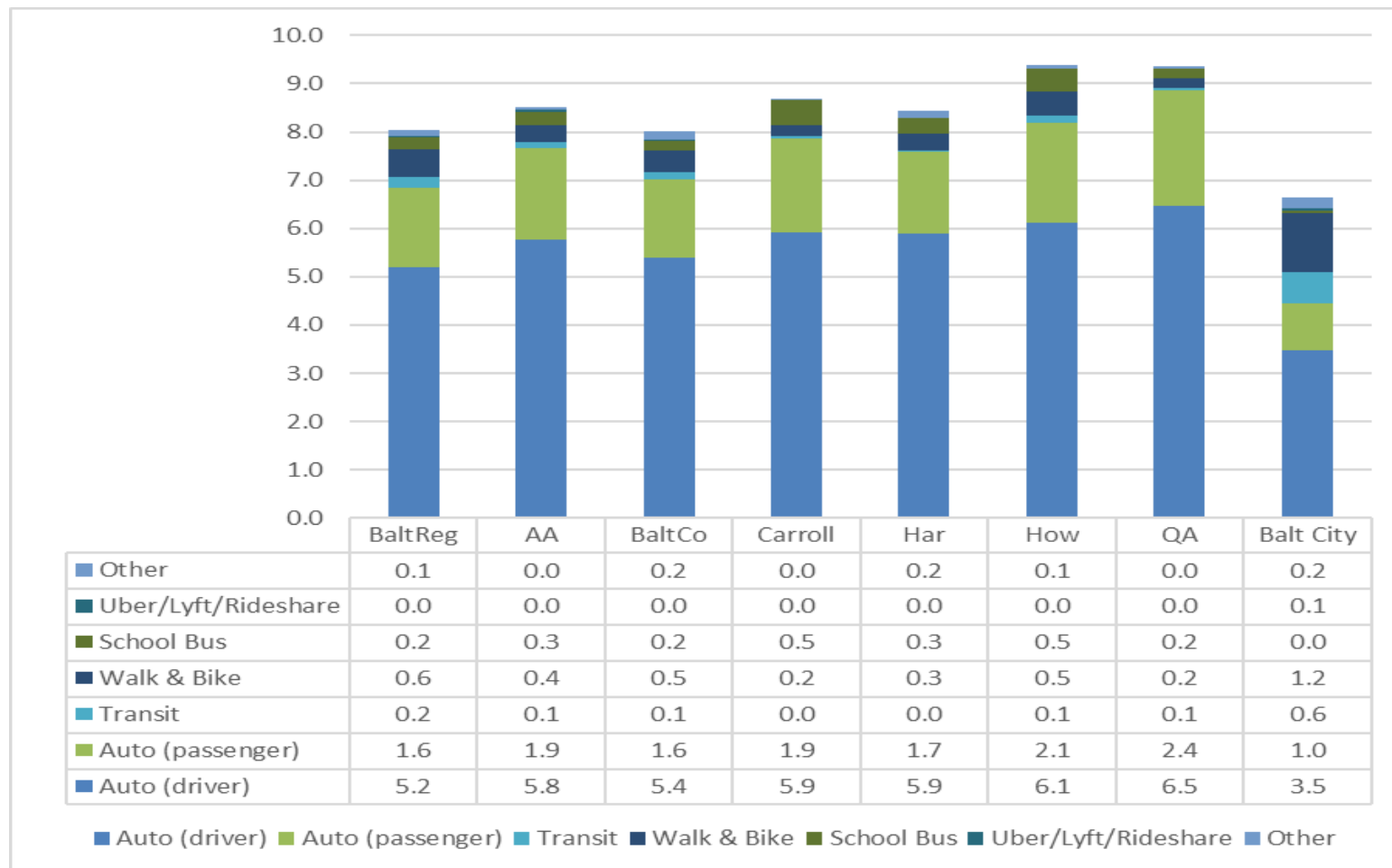
Daily HH Trips by Travel Mode by Jurisdiction Part 1



Summary of Daily HH Trips by Travel Mode by Juris Part 1

- The average Baltimore region household makes 8.0 trips per day but the number of HH trips varies by Jurisdiction
- Queen Anne's County and Howard County households (both 9.4 trips) make significantly more HH trips
- Carroll County (8.7 trips), Anne Arundel County (8.5 trips), and Harford County (8.4 trips) households make somewhat more HH trips
- Baltimore County (8.0 trips) households are at the regional average.
- Baltimore City households (6.6 trips) make somewhat fewer HH trips

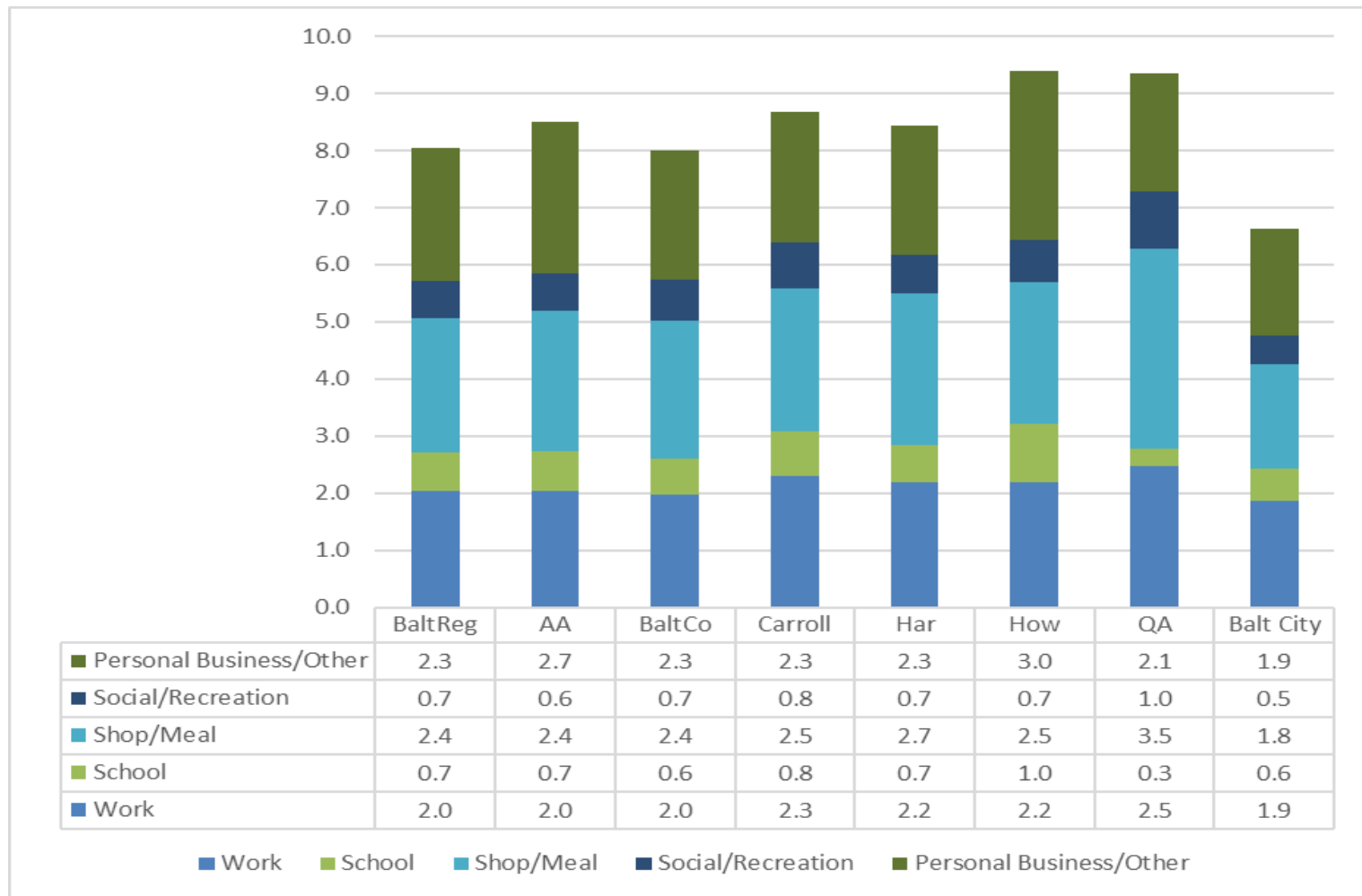
Daily HH Trips by Travel Mode by Jurisdiction Part 2



Summary of Daily HH Trips by Travel Mode by Jurisdiction Part 2

- The average Baltimore region household makes 8.0 trips per day with the following division by mode:
 - Auto (driver) = 5.2 trips
 - Auto (passenger) = 1.6 trips
 - Transit = 0.2 trips
 - Walk & Bike = 0.6 trips
 - School Bus = 0.2 trips
 - Uber/Lyft/Rideshare = 0.0 trips
 - Other = 0.1 trips

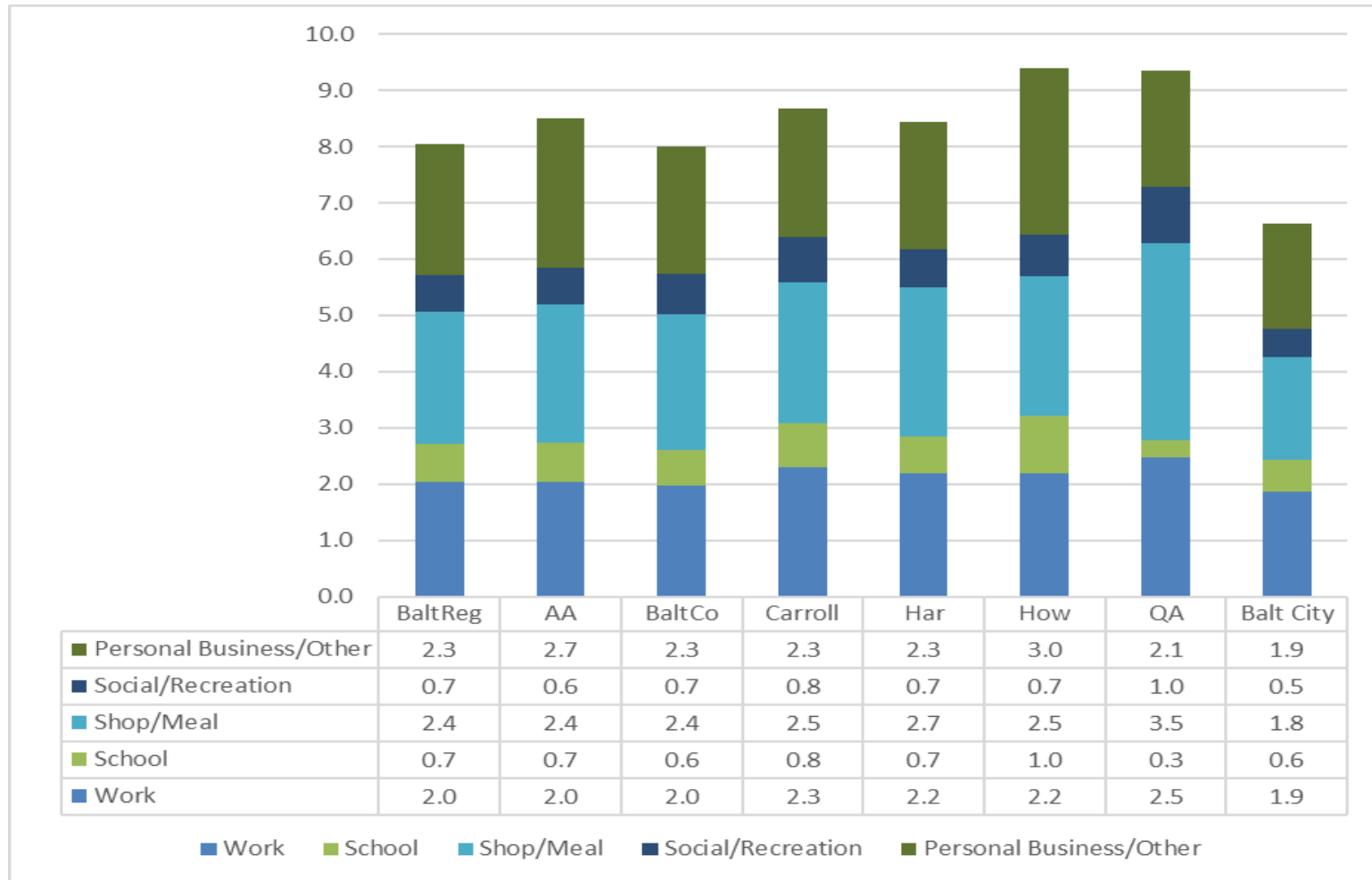
Daily HH Trips by Trip Purpose by Jurisdiction Part 1



Summary of Daily HH Trips by Trip Purpose by Jurisdiction Part 1

- The average Baltimore region household makes 8.0 trips per day but the number of HH trips varies by Jurisdiction
- Queen Anne's County and Howard County households (both 9.4 trips) make significantly more HH trips
- Carroll County (8.7 trips), Anne Arundel County (8.5 trips), and Harford County (8.4 trips) households make somewhat more HH trips.
- Baltimore County (8.0 trips) households are at the regional average.
- Baltimore City (6.6 trips) households make somewhat fewer HH trips.

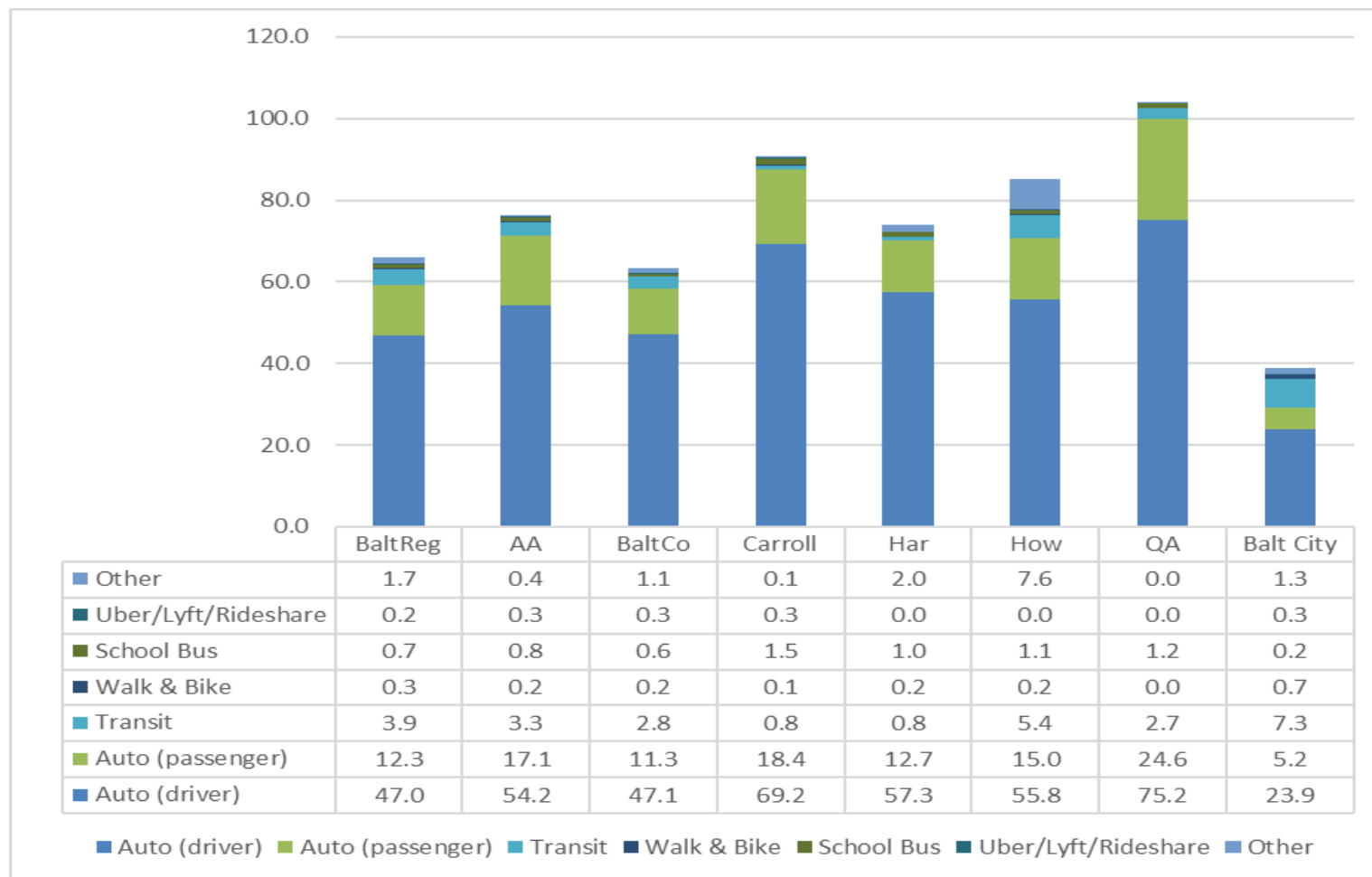
Daily HH Trips by Trip Purpose by Jurisdiction Part 2



Summary of Daily HH Trips by Trip Purpose by Jurisdiction Part 2

- The average Baltimore region household makes 8.0 trips per day with the following division by Purpose:
 - Work = 2.0 trips
 - School = 0.7 trips
 - Shop/Meal = 2.4 trips
 - Social/Recreation = 0.7 trips
 - Personal Business/Other = 2.3 trips

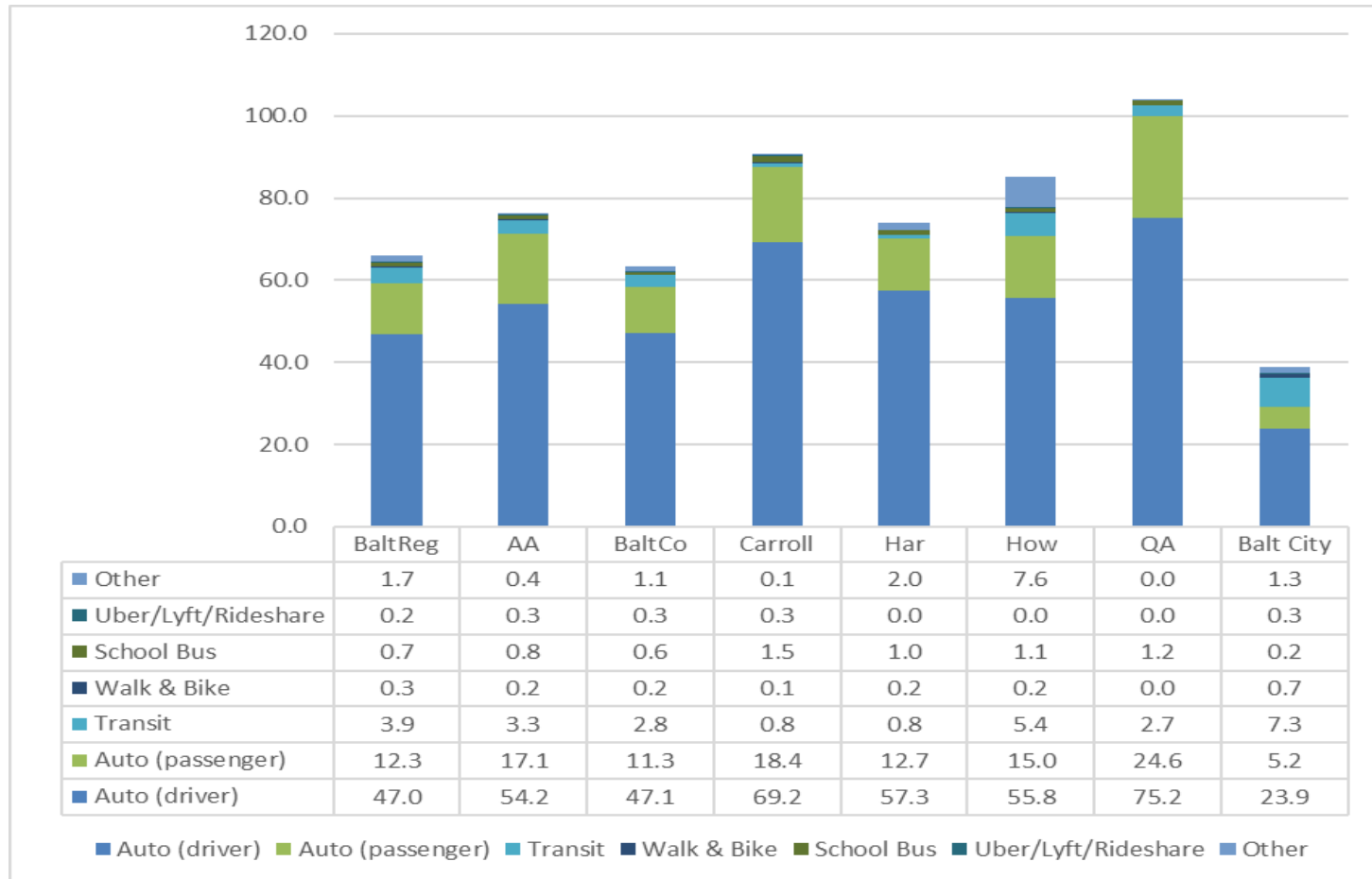
Daily HH Miles by Travel Mode by Jurisdiction Part 1



Summary of Daily HH Miles by Travel Mode by Jurisdiction Part 1

- The average Baltimore region household travels 66.1 miles per day but the number of HH miles varies by jurisdiction.
- Queen Anne's County (103.8 miles) and Carroll County (90.5 miles) households travel significantly more HH miles.
- Howard County (85.2 miles) households, Anne Arundel County (76.3 miles) households, Harford County (74.1 miles) households, and Baltimore County (66.3 miles) households travel somewhat more HH miles.
- Baltimore City (38.8 miles) households travel significantly fewer HH miles.

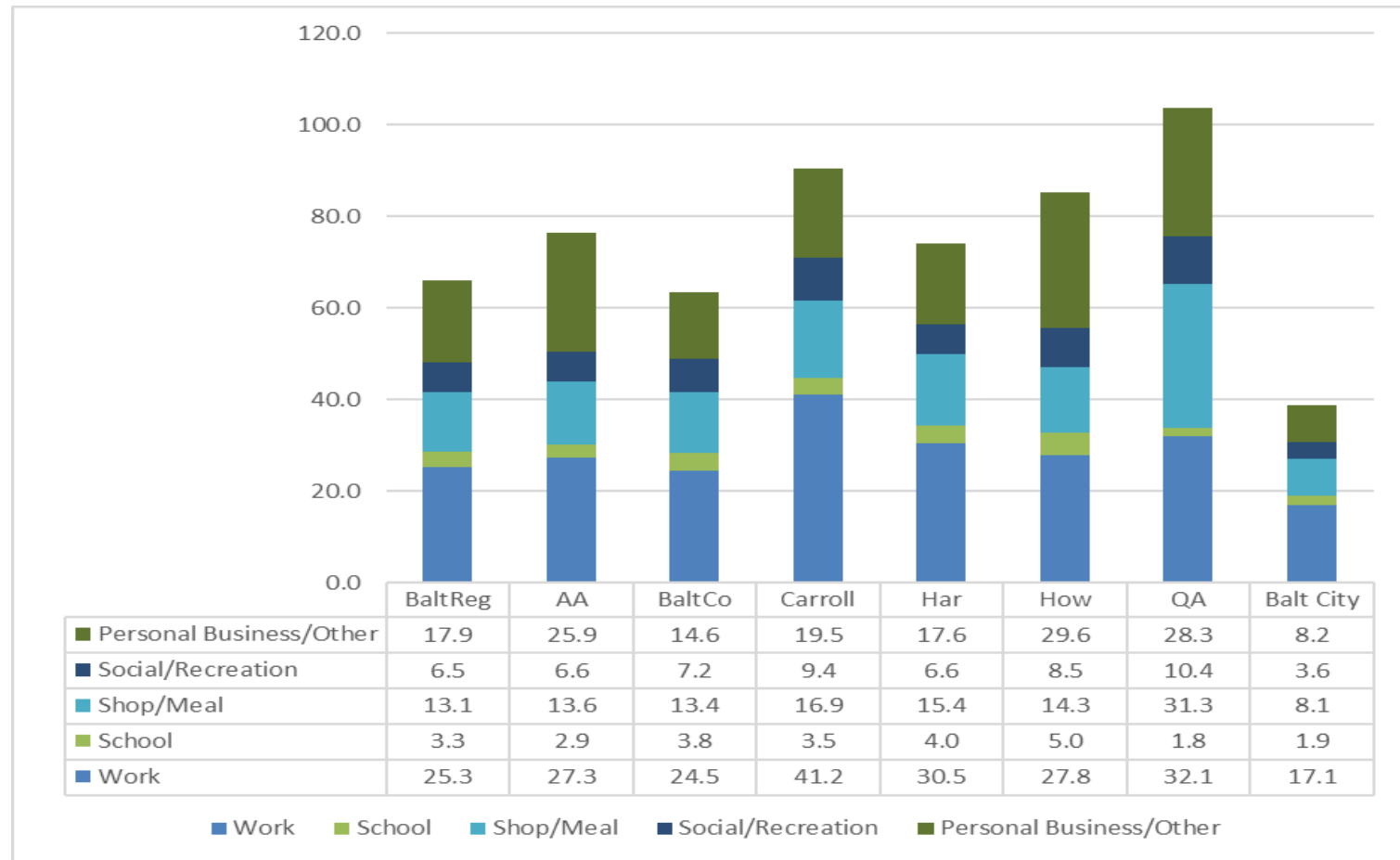
Daily HH Miles by Travel Mode by Jurisdiction Part 2



Summary of Daily HH Miles by Travel Mode by Jurisdiction Part 2

- The average Baltimore region household travels 66.1 miles per day with the following division by mode (one-way distance):
 - Auto (driver) = 47.0 miles
 - Auto (passenger) = 12.3 miles
 - Transit = 3.9 miles
 - Walk & Bike = 0.3 miles
 - School Bus = 0.7 miles
 - Uber/Lyft/Rideshare = 0.2 miles
 - Other = 1.7 miles

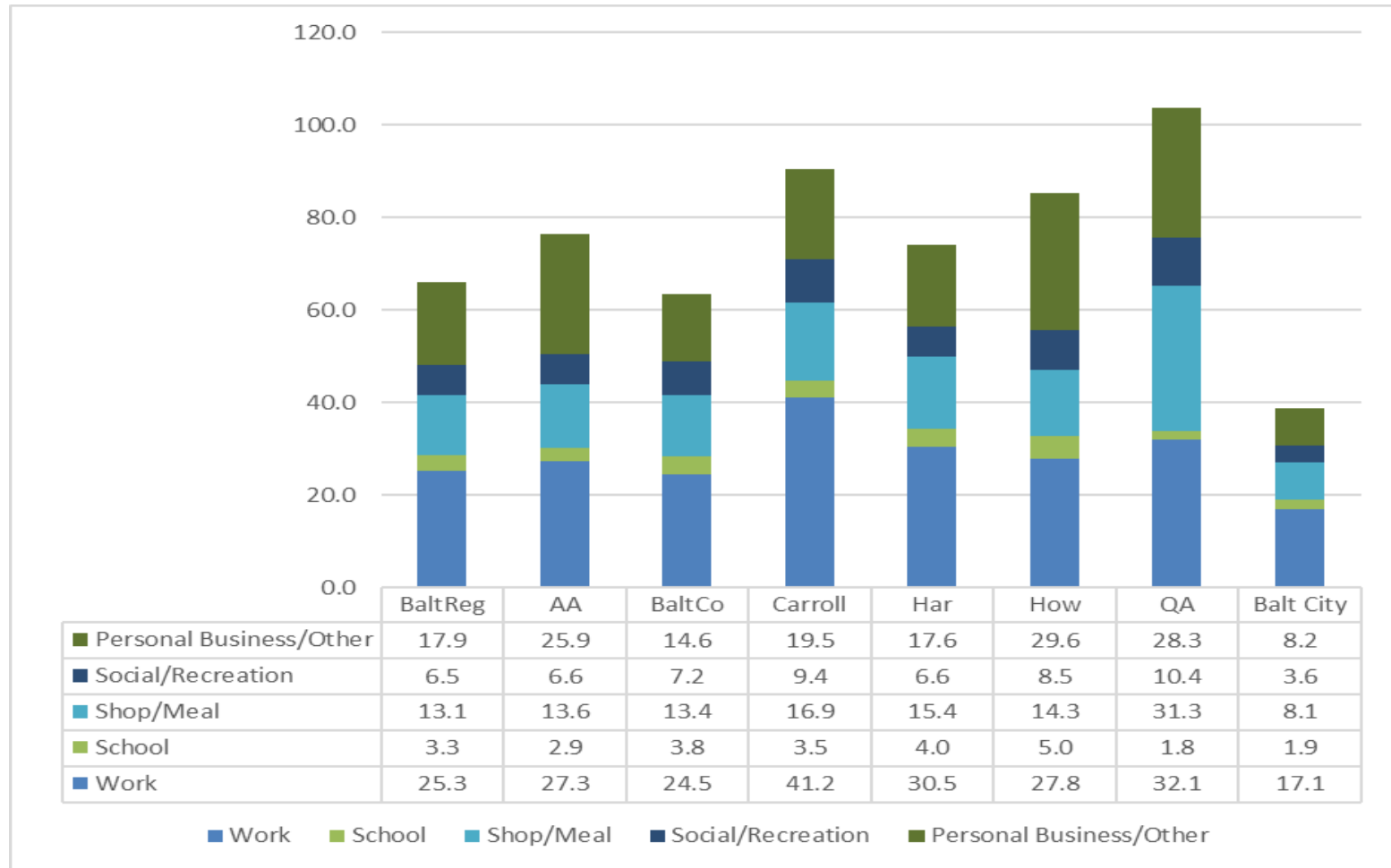
Daily HH Miles by Trip Purpose by Jurisdiction Part 1



Summary of Daily HH Miles by Trip Purpose by Jurisdiction Part 1

- The average Baltimore region household travels 66.1 miles per day, but the number of HH miles varies by jurisdiction.
- Queen Anne's County (103.8 miles) households and Carroll County (90.5 miles) households travel significantly more HH miles.
- Howard County (85.2 miles) households, Anne Arundel County (76.3 miles) households, Harford County (74.1 miles) households, and Baltimore County (66.3 miles) households travel somewhat more HH miles.
- Baltimore City (38.8 miles) households travel significantly fewer HH miles.

Daily HH Miles by Trip Purpose by Jurisdiction Part 2



Summary of Daily HH Miles by Trip Purpose by Jurisdiction Part 2

- The average Baltimore region household travels 66.1 miles per day with the following division by purpose (one-way distance):
 - Work = 25.3 miles
 - School = 3.3 miles
 - Shop/Meal = 13.1 miles
 - Social/Recreation = 6.5 miles
 - Personal Business/Other = 17.9 miles

For More Information

Robert Berger | Senior Transportation Planner

410-732-0500 x1037 | rberger@baltometro.org | www.baltometro.org



@BALTOMETROCOUNCIL



@BALTIMORE METROPOLITAN COUNCIL



@BALTIMORE METROPOLITAN COUNCIL

