

TRANSIT STATION AREA PROFILE TOOL

Technical Committee

May 7, 2019

BACKGROUND

- What is it?
 - A tool to encourage TOD by providing users with socioeconomic, demographic, employment, median housing sales and ridership information.
- Who is it for?
 - General public
 - Policy makers
 - Planners
 - Real estate/developers
 - Transit and bicycle advocates

GOALS

- Support local government and the private sector's desire for transit-oriented development.
- Increase Maryland's return on transportation infrastructure investment by increasing the attractiveness of transit as a commuting mode.
- Increase private investment and tax base surrounding transit stations.

ECONOMIC OPPORTUNITY

- TOD can provide economic development opportunities throughout Maryland.
 - Un-matched scale: 120+ rail stations, located in rural areas, towns and cities.

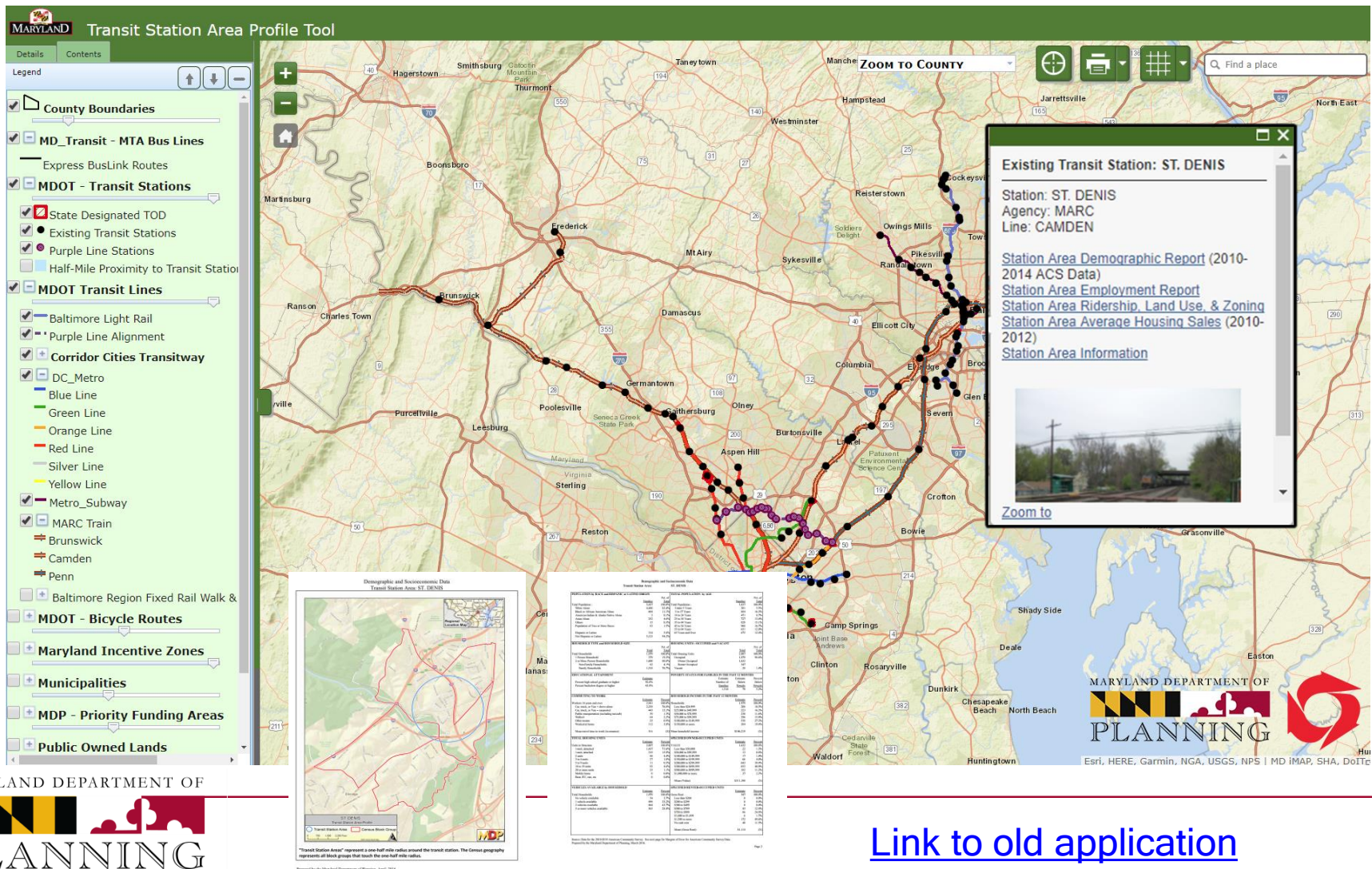
STRATEGIES

- Establish a new data documentation and development process to streamline production and simplify maintenance.
- Provide users with MDP and MDOT TOD-related information in an easy-to-use interface.
- Engage with stakeholder group of representatives from:
 - Local and state government
 - Metropolitan planning organizations
 - Transit advocacy and non-profit organizations
 - Small business organizations
 - Private developer/real estate
- Coordinate with MDOT TSO.
- Implement changes based on feedback.

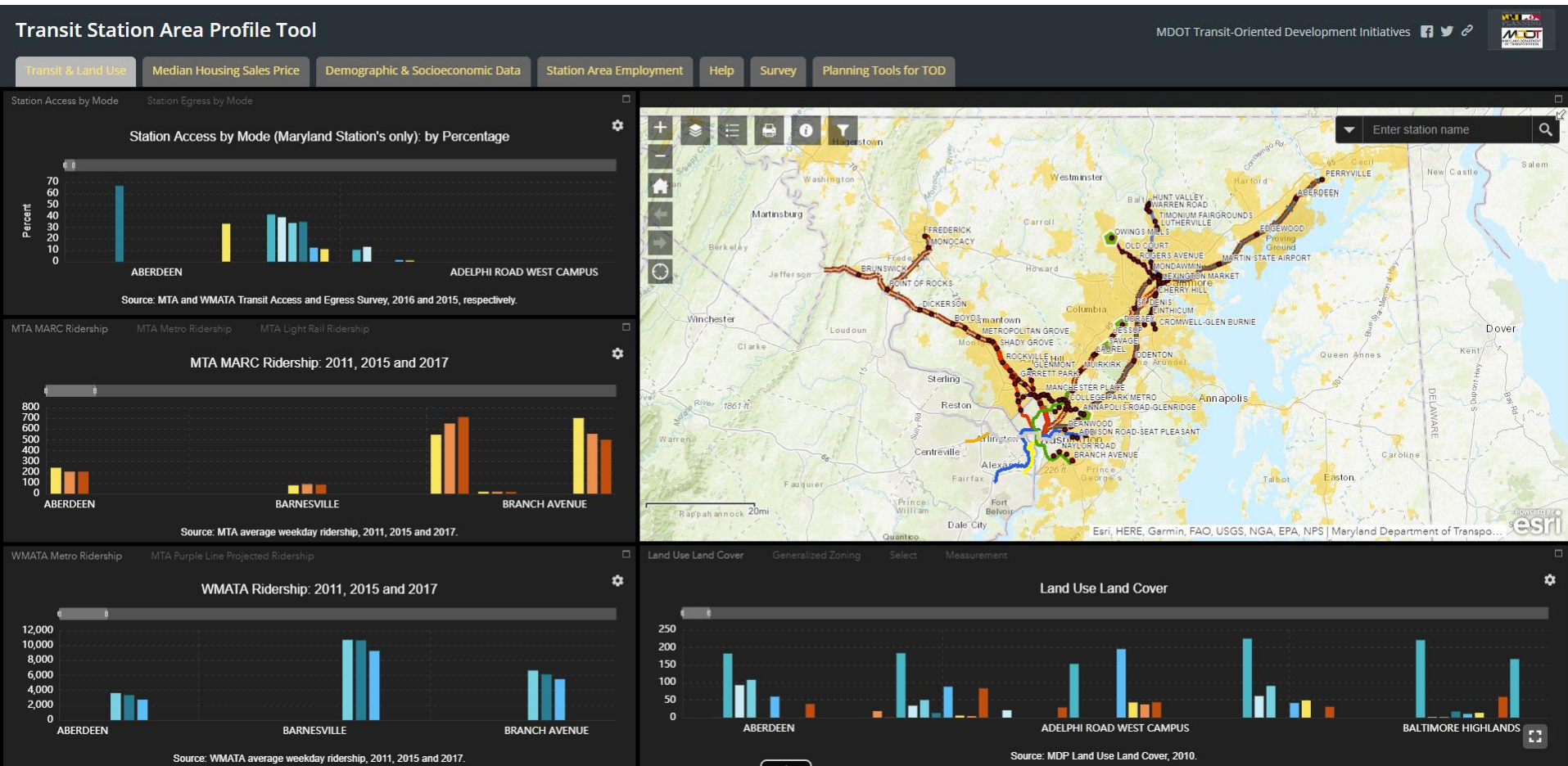
OPPORTUNITIES

- Add value by integrating new, relevant data sources with existing information, where possible.
 - Leverage existing resources such as MD iMAP and Maryland's Open Data Portal.
- Work with our MDOT data partners to encourage sharing of information.
- Strengthen Planning's role in TOD planning with a continued focus to develop resources to assist local governments.

OLD APPLICATION



DEMONSTRATION



USER GROUP FEEDBACK

- Add additional layers (i.e. Opportunity Zones, MTA bus route and stop information, Commuter Bus routes and stop information, if available, Charm City Circulator and bike share).
- Communicate where the station area is and where/how the information is being gathered (one-half mile buffer and intersecting U.S. Census block group boundary).
- Incorporate real estate activity (MD Property View).

NEW AND IMPROVED FEATURES

- Introduced measurement feature.
- Introduced select feature.
- Map extent bug has been fixed, which will result in the applications ability to populate graphs for two or more transit stations, if selected.
- Transit Station Area Profile Tool Version 2.0 is launched for internal and stakeholder review.
- Added the following Map Feature Services: MTA's Bus Line and Bus Stops and WMATA's METRO Bus Line and Bus Stops. Users now have access to MTA bus service route and label information (both Bus Line and Bus Stop) as well as boarding and alighting information (Bus Stop) when viewed at a city-level and lower geographic scale/map extent.
- Added Regional Transportation Agency Routes and Stops and Charm City Circulator stops.
- New contextual Planning Tools for Transit-Oriented Development homepage.
- Added Maryland Property View Residential Sales Data. This information is updated every 30 days. Layer can be toggled on/off by navigating to the Layer List Icon (top left corner of map).
- Employment Dashboard introduced.
- Scale-dependencies for MDOT Designated TOD Boundary, MTA bus routes and stops, MDP Priority Funding Areas and one-half mile rail transit station area buffer have been revised.
- Add a Median Housing Sales Price gauge.
- Revised search feature now includes search by station or address.
- Transit and Land Use bar charts now sort alphabetically.
- Help documentation released.
- Added Number of Jobs in 2018 by NAICS Sector in the Employment Dashboard. Attribute table now provides employment-related information.
- Added U.S. Census' Longitudinal Employer-Household Dynamic Jobs Data in the Employment dashboard. Map pop-up's now show employment related information.
- Dashboard now incorporates responsive design. Map and widgets will adjust position and size based on web browser resolution.
- Added Maryland Department of Commerce Opportunity Zones map service.
- Demographic and Socioeconomic Data and Median Housing Sales Price dashboard introduced.
- Added heat map-type symbolization to the Median Housing Sales Price dashboard.
- Added one-half mile buffer to Transit and Land Use dashboard. Layer will appear when user zoom's to a transit station.
- Data source links for MTA transit ridership work correctly. Station area employment data source links have been revised.
- MDP GIS services are now labeled for improved identification.
- Added MDOT Real Estate TOD Opportunities map service.
- Baltimore and Washington Metro area median income information now included on Median Housing Sales Price bar chart.
- Station Area Employment map now symbolized by total station area employment.
- New revised Survey now has its own tab.
- Revised map extent provides complete view of Maryland's rail transit network.

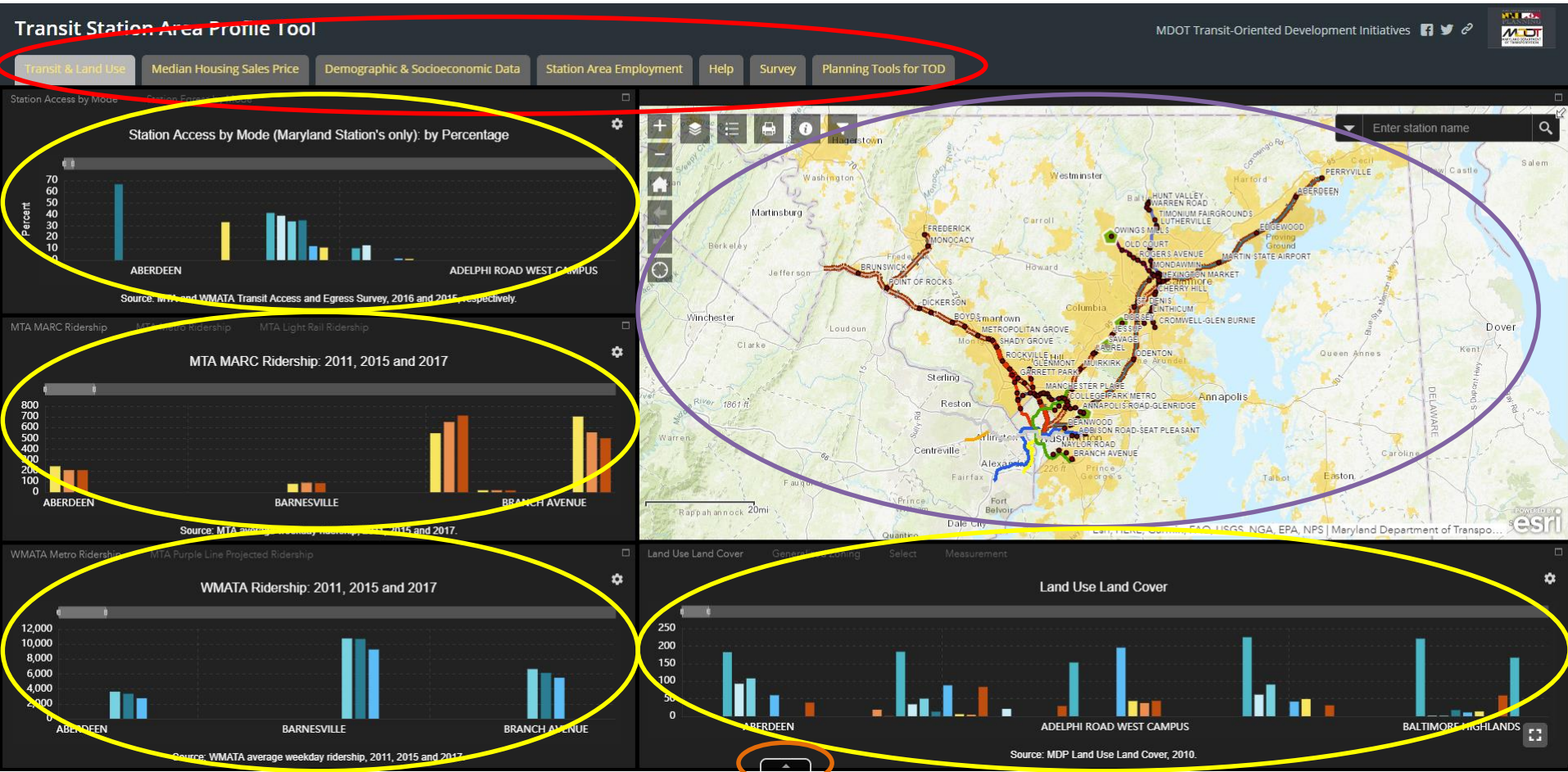
NEXT STEPS

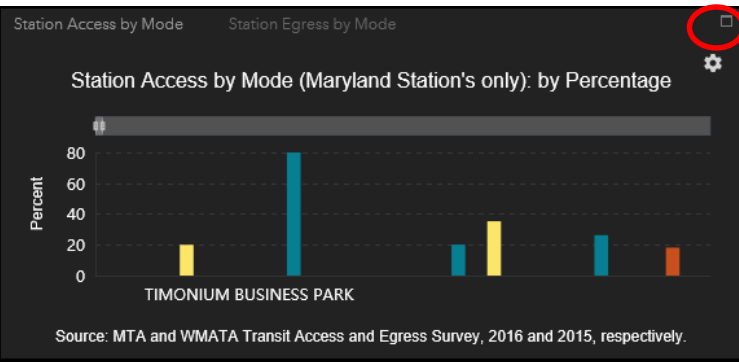
- Continue to add new features.
- Develop help documentation.
- Coordinate with Communications staff on a outreach promotion strategy.

THANK YOU

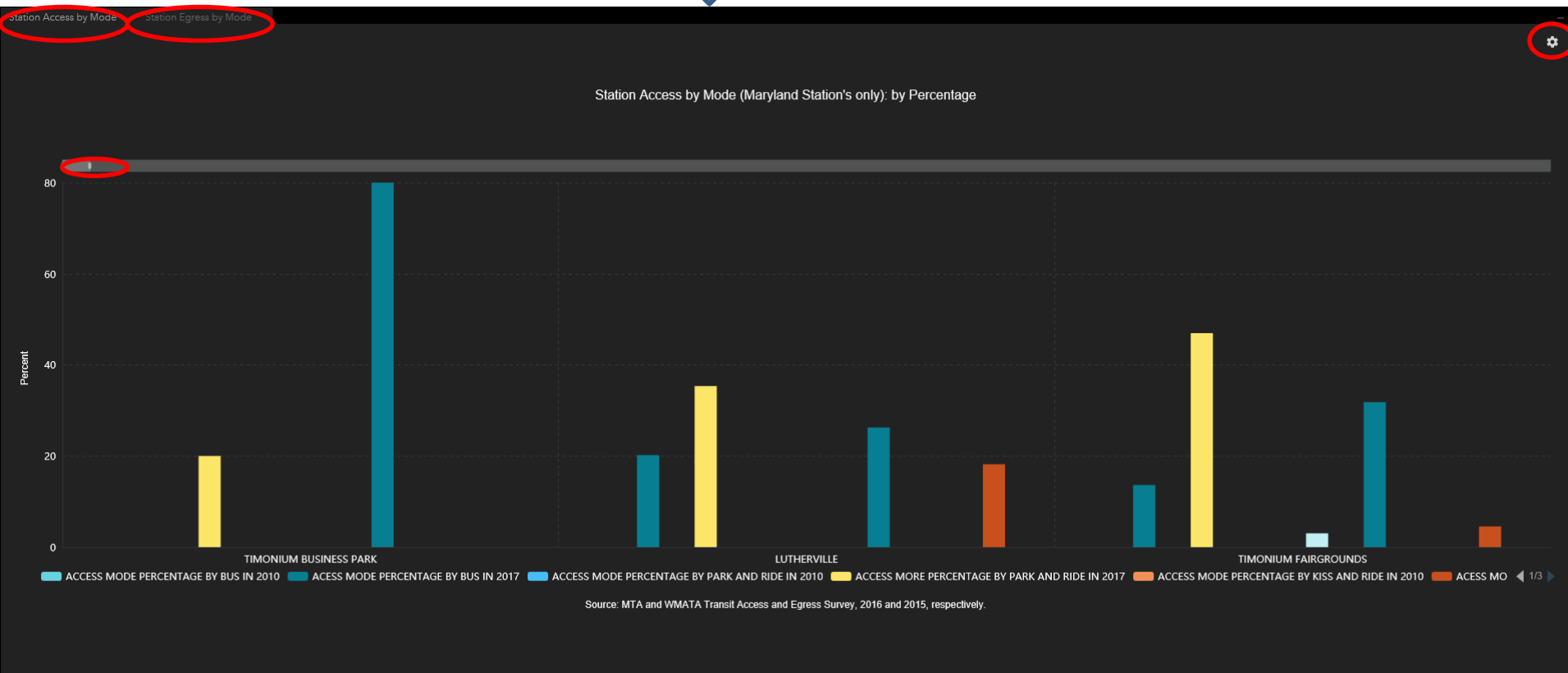
- Scott.Hansen@maryland.gov
- 410-767-4611
- Planning Tools for Transit-Oriented Development
 - todplanning.maryland.gov

COMPONENTS

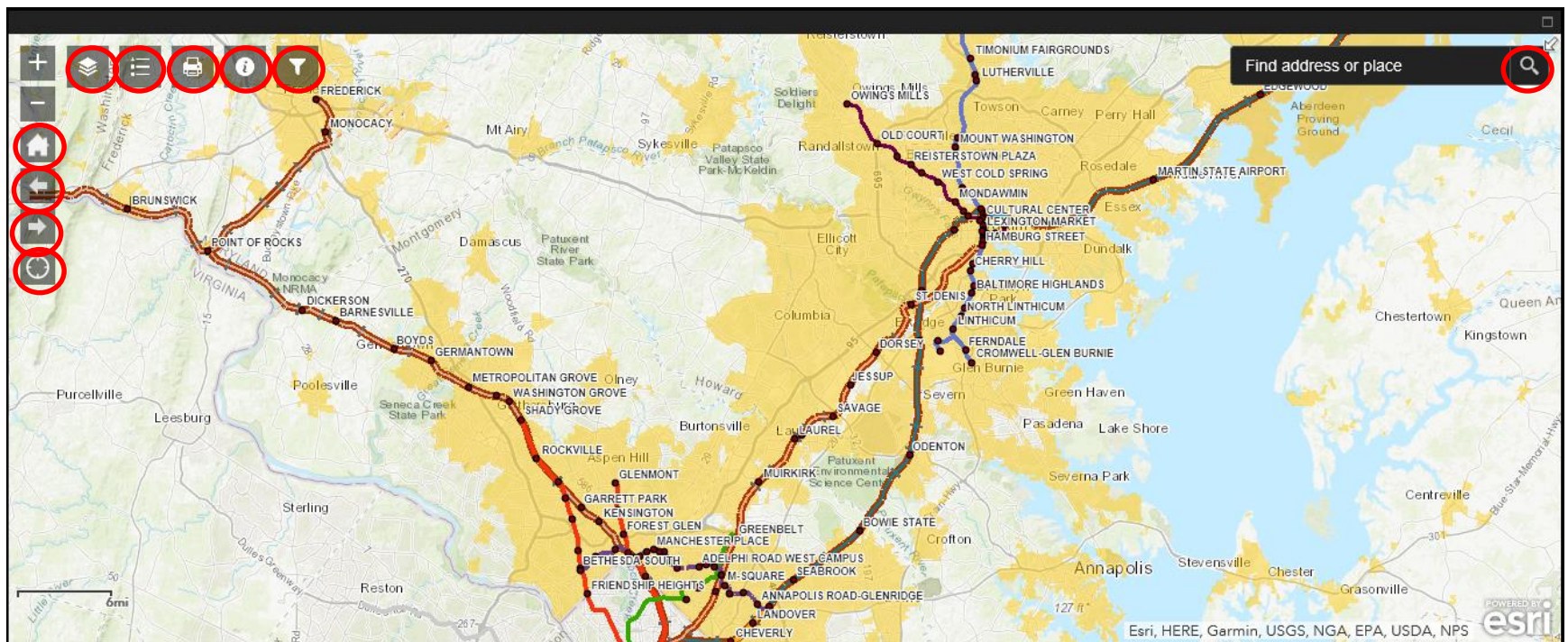




WIDGET



MAP



DATA TABLE

MarylandRailTransitStations - GisAtlas.SDEGISATLASADMIN.TRANS_Master_Stations_2018

Options Filter by map extent Zoom to Clear selection Refresh

STATION NAME	YEAR STATION OPENED	SYSTEM	LINE	WMATA 2011 RIDERSHIP	WMATA_2015	WMATA_2017	MTA PURPLE LINE PROJECTED 2015 RIDERSHIP	MTA PURPLE LINE PROJECTED 2017 RIDERSHIP	MARC 2011 RIDERSHIP	MARC 2015 RIDERSHIP	MARC 2017 RIDERSHIP	MTA METRO LINE 2011 RIDERSHIP	MTA METRO LINE 2015 RIDERSHIP	MTA METRO LINE 2017 RIDERSHIP	MTA LIGHT RAIL LINE 2011 RIDERSHIP	MTA LIGHT RAIL LINE 2015 RIDERSHIP	MTA LIGHT RAIL LINE 2017 RIDERSHIP	NUMBER OF PARKING SPACES IN 2017
WOODSIDE-16TH STREET	Future Station	MTA	Purple Line	0	0	0	1,620	1,387	0	0	0	0	0	0	0	0	0	0
WOODBERRY	1992	MTA	Light Rail	null	null	null	null	null	null	null	null	null	null	null	472	393	378	0
WHITE FLINT	1984	WMATA	Red	4,266	3,855	3,456	null	null	null	null	null	null	null	null	null	null	null	1,270
WHEATON	1990	WMATA	Red	4,472	4,231	3,774	null	null	null	null	null	null	null	null	null	null	null	977
WESTPORT	1992	MTA	Light Rail	null	null	null	null	null	null	null	null	null	null	null	742	618	595	0
WEST WOODVILLE	1993	WMATA	Green	3,855	3,843	3,455	null	null	null	null	null	null	null	null	null	null	null	604

113 features 0 selected

MarylandRailTransitStations - GisAtlas.SDE

Options Filter by map extent

- Show selected records
- Show related records
- Filter
- Show/Hide columns
- Export all to CSV

WOODSIDE-16TH STREET

WOODBERRY 1992

113 features 0 selected