

# Round 8B Cooperative Forecast

## Interagency Consultation Group

January 4, 2017



Baltimore Metropolitan Council




# MSA Population Comparison


Population of the 25 Largest MSAs in the United States

Rank	Metropolitan Statistical Area	2010	2015	Change
1	New York-Newark-Jersey City, NY-NJ-PA	19,567,410	20,182,305	3.1%
2	Los Angeles-Long Beach-Anaheim, CA	12,828,837	13,340,068	4.0%
3	Chicago-Naperville-Elgin, IL-IN-WI	9,461,105	9,551,031	1.0%
4	Dallas-Fort Worth-Arlington, TX	6,426,214	7,102,796	10.5%
5	Houston-The Woodlands-Sugar Land, TX	5,920,416	6,656,947	12.4%
6	Washington-Arlington-Alexandria, DC-VA-MD-WV	5,636,232	6,097,684	8.2%
7	Philadelphia-Camden-Wilmington, PA-NJ-DE-MD	5,965,343	6,069,875	1.8%
8	Miami-Fort Lauderdale-West Palm Beach, FL	5,564,635	6,012,331	8.0%
9	Atlanta-Sandy Springs-Roswell, GA	5,286,728	5,710,795	8.0%
10	Boston-Cambridge-Newton, MA-NH	4,552,402	4,774,321	4.9%
11	San Francisco-Oakland-Hayward, CA	4,335,391	4,656,132	7.4%
12	Phoenix-Mesa-Scottsdale, AZ	4,192,887	4,574,531	9.1%
13	Riverside-San Bernardino-Ontario, CA	4,224,851	4,489,159	6.3%
14	Detroit-Warren-Dearborn, MI	4,296,250	4,302,043	0.1%
15	Seattle-Tacoma-Bellevue, WA	3,439,809	3,733,580	8.5%
16	Minneapolis-St. Paul-Bloomington, MN-WI	3,348,859	3,524,583	5.2%
17	San Diego-Carlsbad, CA	3,095,313	3,299,521	6.6%
18	Tampa-St. Petersburg-Clearwater, FL	2,783,243	2,975,225	6.9%
19	Denver-Aurora-Lakewood, CO	2,543,482	2,814,330	10.6%
20	St. Louis, MO-IL	2,787,701	2,811,588	0.9%
21	Baltimore-Columbia-Towson, MD	2,710,489	2,797,407	3.2%
22	Charlotte-Concord-Gastonia, NC-SC	2,217,012	2,426,363	9.4%
23	Portland-Vancouver-Hillsboro, OR-WA	2,226,009	2,389,228	7.3%
24	Orlando-Kissimmee-Sanford, FL	2,134,411	2,387,138	11.8%
25	San Antonio-New Braunfels, TX	2,142,508	2,384,075	11.3%

Source: U.S. Census Bureau.



Baltimore Metropolitan Council



## Cooperative Forecasts

- Round 8 Endorsed – August 27, 2013
- Round 8A Endorsed – June 24, 2014
- Round 8B Endorsed – August 23, 2016
- Round 9 Timeline



Baltimore Metropolitan Council



3

## Round 8B

- Four jurisdictions submitted updates
  - Baltimore City
  - Baltimore County
  - Carroll County
  - Howard County
- Two jurisdictions did not submit updates
  - Anne Arundel County
  - Harford County
- Portion of Queen Anne's County added



Baltimore Metropolitan Council





4

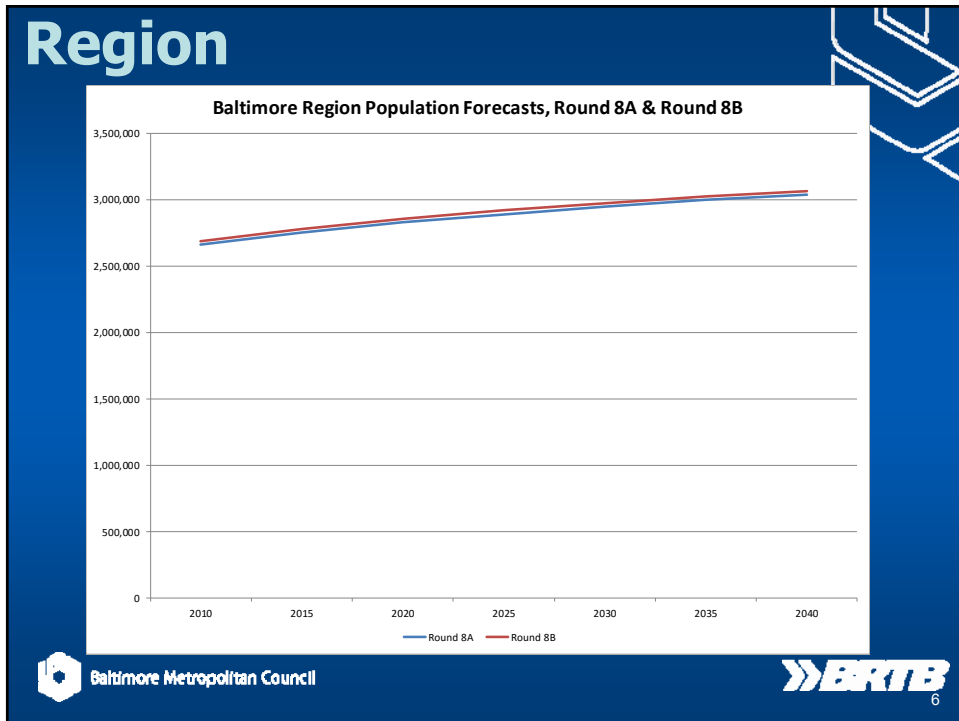
# Region

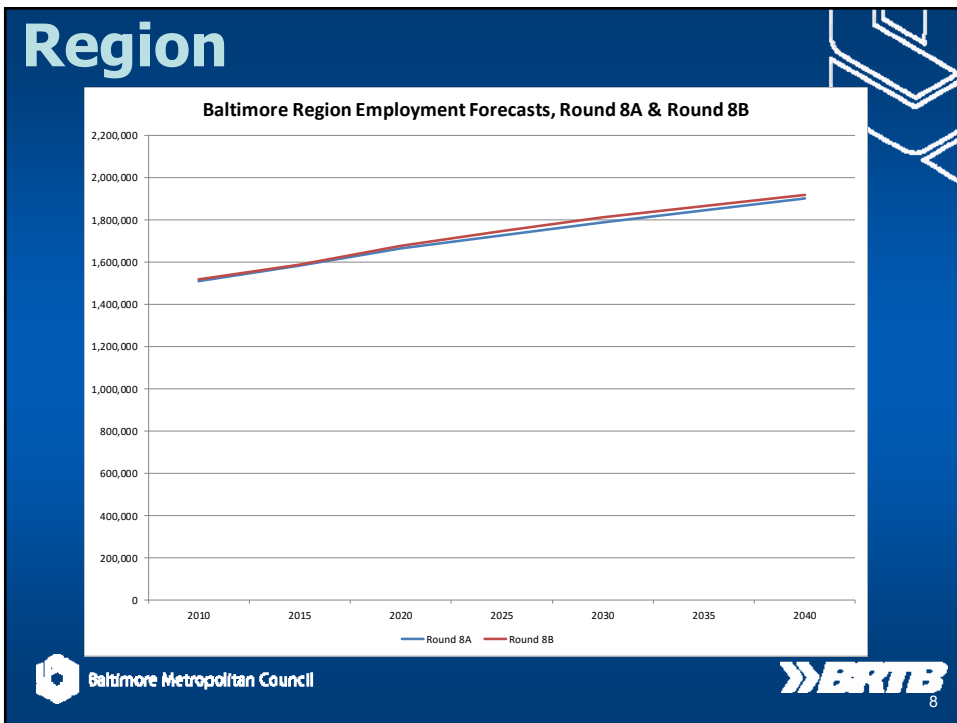
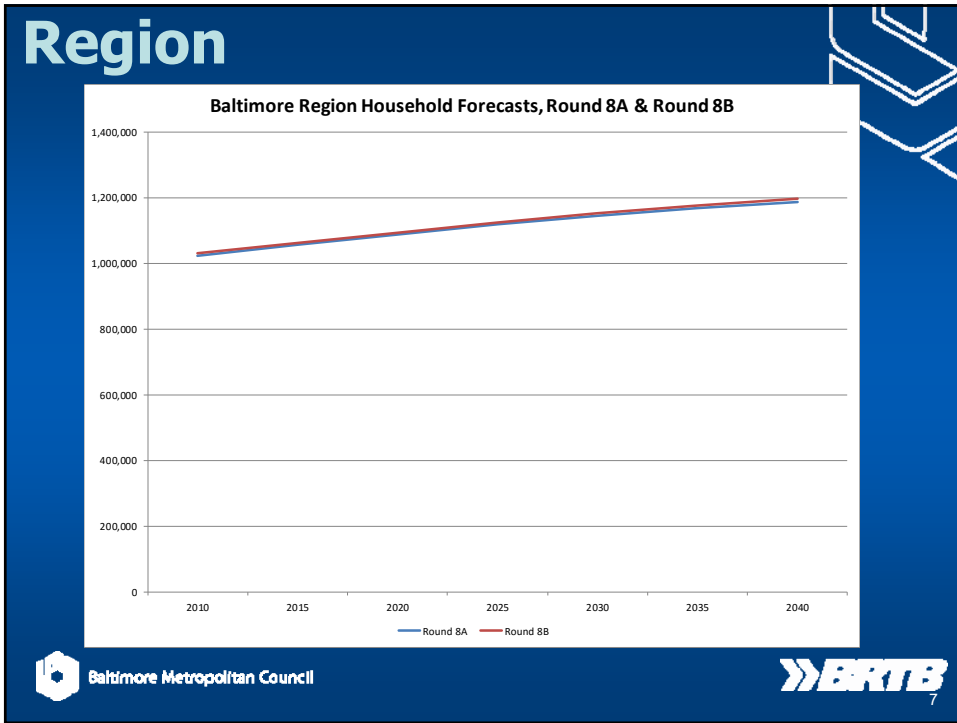
## Baltimore Region Demographic Forecast Comparison - Round 8A and Round 8B

	2010	2015	2020	2025	2030	2035	2040	'10-'40 Chg	'10-'40 % Chg
<b>Population</b>									
Round 8B	2,684,787	2,776,860	2,851,831	2,916,702	2,974,623	3,025,112	3,064,183	379,396	14.1%
Round 8A	2,662,691	2,751,045	2,826,523	2,887,732	2,945,561	2,995,136	3,036,051	373,360	14.0%
Chg	22,096	25,815	25,308	28,970	29,062	29,976	28,132		
% Chg	0.8%	0.9%	0.9%	1.0%	1.0%	1.0%	0.9%		
<b>Households</b>								<b>Chg</b>	<b>% Chg</b>
Round 8B	1,029,243	1,062,518	1,093,556	1,124,741	1,152,187	1,176,950	1,195,221	165,978	16.1%
Round 8A	1,023,369	1,055,738	1,088,335	1,117,639	1,143,704	1,167,421	1,186,497	163,128	15.9%
Chg	5,874	6,780	5,221	7,102	8,483	9,529	8,724		
% Chg	0.6%	0.6%	0.5%	0.6%	0.7%	0.8%	0.7%		
<b>Employment</b>								<b>Chg</b>	<b>% Chg</b>
Round 8B	1,516,318	1,587,211	1,674,955	1,746,681	1,811,804	1,864,054	1,918,789	402,471	26.5%
Round 8A	1,508,110	1,581,469	1,662,283	1,725,069	1,787,897	1,843,049	1,901,714	393,604	26.1%
Chg	8,208	5,742	12,672	21,612	23,907	21,005	17,075		
% Chg	0.5%	0.4%	0.8%	1.3%	1.3%	1.1%	0.9%		

Note: Round 8B data contains Queen Anne's County. Round 8A data does NOT contain Queen Anne's County.  
Source: Local Jurisdictions; Cooperative Forecasting Group; Baltimore Metropolitan Council.


Baltimore Metropolitan Council








## Anne Arundel County

**Anne Arundel County Demographic Forecast Comparison - Round 8A and Round 8B**

								'10-'40	'10-'40
<b>Population</b>	<b>2010</b>	<b>2015</b>	<b>2020</b>	<b>2025</b>	<b>2030</b>	<b>2035</b>	<b>2040</b>	<b>Chg</b>	<b>% Chg</b>
Round 8B	537,656	559,619	580,007	593,595	606,689	618,177	628,048	90,392	16.8%
Round 8A	537,656	559,619	580,007	593,595	606,689	618,177	628,048	90,392	16.8%
Chg	0	0	0	0	0	0	0		
% Chg	0.0%	0.0%	0.0%	0.0%	0.0%	0.0%	0.0%		
<b>Households</b>								<b>Chg</b>	<b>% Chg</b>
Round 8B	199,378	206,441	213,504	220,565	227,626	234,647	241,542	42,164	21.1%
Round 8A	199,378	206,441	213,504	220,565	227,626	234,647	241,542	42,164	21.1%
Chg	0	0	0	0	0	0	0		
% Chg	0.0%	0.0%	0.0%	0.0%	0.0%	0.0%	0.0%		
<b>Employment</b>								<b>Chg</b>	<b>% Chg</b>
Round 8B	323,148	342,011	361,688	376,085	391,312	404,986	424,061	100,913	31.2%
Round 8A	323,148	342,011	361,688	376,085	391,312	404,986	424,061	100,913	31.2%
Chg	0	0	0	0	0	0	0		
% Chg	0.0%	0.0%	0.0%	0.0%	0.0%	0.0%	0.0%		

Source: Local Jurisdictions; Cooperative Forecasting Group; Baltimore Metropolitan Council.




Baltimore Metropolitan Council


## Baltimore City

**Baltimore City Demographic Forecast Comparison - Round 8A and Round 8B**

								'10-'40	'10-'40
<b>Population</b>	<b>2010</b>	<b>2015</b>	<b>2020</b>	<b>2025</b>	<b>2030</b>	<b>2035</b>	<b>2040</b>	<b>Chg</b>	<b>% Chg</b>
Round 8B	620,961	633,281	641,128	648,493	656,974	665,907	667,677	46,716	7.5%
Round 8A	620,961	636,722	647,282	656,314	667,210	676,726	680,262	59,301	9.5%
Chg	0	-3,441	-6,154	-7,821	-10,236	-10,819	-12,585		
% Chg	0.0%	-0.5%	-1.0%	-1.2%	-1.5%	-1.6%	-1.9%		
<b>Households</b>								<b>Chg</b>	<b>% Chg</b>
Round 8B	249,903	255,205	258,511	261,539	265,388	269,704	270,317	20,414	8.2%
Round 8A	249,903	256,904	261,374	265,100	269,632	273,496	274,976	25,073	10.0%
Chg	0	-1,699	-2,863	-3,561	-4,244	-3,792	-4,659		
% Chg	0.0%	-0.7%	-1.1%	-1.3%	-1.6%	-1.4%	-1.7%		
<b>Employment</b>								<b>Chg</b>	<b>% Chg</b>
Round 8B	381,772	385,726	401,339	416,463	431,326	440,635	449,276	67,504	17.7%
Round 8A	381,772	388,651	402,534	415,971	428,751	441,346	454,167	72,395	19.0%
Chg	0	-2,925	-1,195	492	2,575	-711	-4,891		
% Chg	0.0%	-0.8%	-0.3%	0.1%	0.6%	-0.2%	-1.1%		

Source: Local Jurisdictions; Cooperative Forecasting Group; Baltimore Metropolitan Council.


Baltimore Metropolitan Council


# Baltimore City

- Port Covington
  - 266 Acres
  - Project to Add:
    - 15,000 Jobs
    - 7,000 HHs
    - 11,000 Persons



Image Source: Sagamore Development Company



# Baltimore County

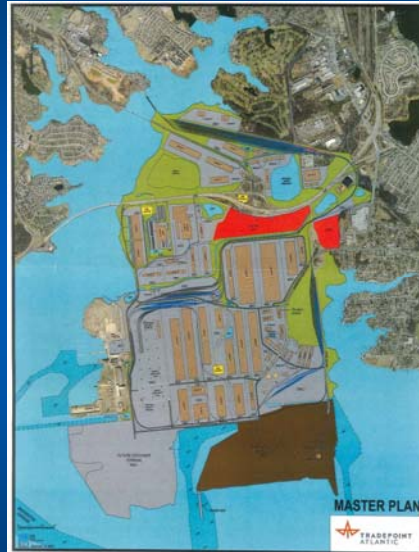
Baltimore County Demographic Forecast Comparison - Round 8A and Round 8B								'10-'10	'10-'10
Population	2010	2015	2020	2025	2030	2035	2040	Chg	% Chg
Round 8B	805,029	827,063	834,292	849,414	863,004	875,027	885,783	80,754	10.0%
Round 8A	805,029	823,121	832,393	846,771	858,183	869,523	880,726	75,697	9.4%
Chg	0	3,942	1,899	2,643	4,821	5,504	5,057		
% Chg	0.0%	0.5%	0.2%	0.3%	0.6%	0.6%	0.6%		
Households								Chg	% Chg
Round 8B	316,715	323,815	326,827	332,928	338,451	343,265	347,496	30,781	9.7%
Round 8A	316,715	321,983	325,447	331,312	335,749	340,162	344,539	27,824	8.8%
Chg	0	1,832	1,380	1,616	2,702	3,103	2,957		
% Chg	0.0%	0.6%	0.4%	0.5%	0.8%	0.9%	0.9%		
Employment								Chg	% Chg
Round 8B	446,250	465,812	489,033	503,440	510,287	515,783	521,515	75,265	16.9%
Round 8A	446,250	465,801	484,533	492,436	499,296	504,820	510,565	64,315	14.4%
Chg	0	11	4,500	11,004	10,991	10,963	10,950		
% Chg	0.0%	0.0%	0.9%	2.2%	2.2%	2.2%	2.1%		

Source: Local Jurisdictions, Cooperative Forecasting Group, Baltimore Metropolitan Council.



# Baltimore County

- Tradeport Atlantic
  - 3,100 Acres
  - Water, Rail, Hwy Access
  - Project to Add 11,000 jobs



Baltimore Metropolitan Council



13

# Carroll County

Carroll County Demographic Forecast Comparison - Round 8A and Round 8B

								'10-'40	'10-'40
Population	2010	2015	2020	2025	2030	2035	2040	Chg	% Chg
Round 8B	167,134	170,549	175,900	179,437	183,258	186,180	189,574	22,440	13.4%
Round 8A	167,134	170,549	175,900	179,437	183,258	186,180	189,574	22,440	13.4%
Chg	0	0	0	0	0	0	0		
% Chg	0.0%	0.0%	0.0%	0.0%	0.0%	0.0%	0.0%		
<b>Households</b>								<b>Chg</b>	<b>% Chg</b>
Round 8B	59,784	62,218	64,226	65,980	67,600	69,162	70,668	10,884	18.2%
Round 8A	62,406	64,142	66,219	68,025	69,692	71,305	72,853	10,447	16.7%
Chg	-2,622	-1,924	-1,993	-2,045	-2,092	-2,143	-2,185		
% Chg	-4.2%	-3.0%	-3.0%	-3.0%	-3.0%	-3.0%	-3.0%		
<b>Employment</b>								<b>Chg</b>	<b>% Chg</b>
Round 8B	70,889	73,063	76,107	78,421	80,888	82,996	85,351	14,462	20.4%
Round 8A	70,889	73,063	76,107	78,421	80,888	82,996	85,351	14,462	20.4%
Chg	0	0	0	0	0	0	0		
% Chg	0.0%	0.0%	0.0%	0.0%	0.0%	0.0%	0.0%		

Source: Local Jurisdictions; Cooperative Forecasting Group; Baltimore Metropolitan Council.



Baltimore Metropolitan Council





14

## Harford County

**Harford County Demographic Forecast Comparison - Round 8A and Round 8B**

								'10-'40	'10-'40
<b>Population</b>	<b>2010</b>	<b>2015</b>	<b>2020</b>	<b>2025</b>	<b>2030</b>	<b>2035</b>	<b>2040</b>	<b>Chg</b>	<b>% Chg</b>
Round 8B	244,826	251,991	258,668	265,098	273,127	281,029	291,089	46,263	18.9%
Round 8A	244,826	251,991	258,668	265,098	273,127	281,029	291,089	46,263	18.9%
Chg	0	0	0	0	0	0	0		
% Chg	0.0%	0.0%	0.0%	0.0%	0.0%	0.0%	0.0%		
<b>Households</b>								<b>Chg</b>	<b>% Chg</b>
Round 8B	90,218	94,095	97,892	101,689	105,488	109,298	113,090	22,872	25.4%
Round 8A	90,218	94,095	97,892	101,689	105,488	109,298	113,090	22,872	25.4%
Chg	0	0	0	0	0	0	0		
% Chg	0.0%	0.0%	0.0%	0.0%	0.0%	0.0%	0.0%		
<b>Employment</b>								<b>Chg</b>	<b>% Chg</b>
Round 8B	104,670	115,562	126,040	135,775	146,269	157,191	167,261	62,591	59.8%
Round 8A	104,670	115,562	126,040	135,775	146,269	157,191	167,261	62,591	59.8%
Chg	0	0	0	0	0	0	0		
% Chg	0.0%	0.0%	0.0%	0.0%	0.0%	0.0%	0.0%		

Source: Local Jurisdictions; Cooperative Forecasting Group; Baltimore Metropolitan Council.




Baltimore Metropolitan Council

15

## Howard County

**Howard County Demographic Forecast Comparison - Round 8A and Round 8B**

								'10-'40	'10-'40
<b>Population</b>	<b>2010</b>	<b>2015</b>	<b>2020</b>	<b>2025</b>	<b>2030</b>	<b>2035</b>	<b>2040</b>	<b>Chg</b>	<b>% Chg</b>
Round 8B	287,085	311,168	337,051	354,149	363,674	369,603	371,621	84,536	29.4%
Round 8A	287,085	309,043	332,273	346,517	357,094	363,501	366,352	79,267	27.6%
Chg	0	2,125	4,778	7,632	6,580	6,102	5,269		
% Chg	0.0%	0.7%	1.4%	2.2%	1.8%	1.7%	1.4%		
<b>Households</b>								<b>Chg</b>	<b>% Chg</b>
Round 8B	104,749	111,753	122,781	131,398	136,343	138,960	139,697	34,948	33.4%
Round 8A	104,749	112,173	123,899	130,948	135,517	138,513	139,497	34,748	33.2%
Chg	0	-420	-1,118	450	826	447	200		
% Chg	0.0%	-0.4%	-0.9%	0.3%	0.6%	0.3%	0.1%		
<b>Employment</b>								<b>Chg</b>	<b>% Chg</b>
Round 8B	181,381	196,381	211,381	226,381	241,381	251,710	260,309	78,928	43.5%
Round 8A	181,381	196,381	211,381	226,381	241,381	251,710	260,309	78,928	43.5%
Chg	0	0	0	0	0	0	0		
% Chg	0.0%	0.0%	0.0%	0.0%	0.0%	0.0%	0.0%		

Source: Local Jurisdictions; Cooperative Forecasting Group; Baltimore Metropolitan Council.


Baltimore Metropolitan Council

16



# Queen Anne's County

Queen Anne's County - Baltimore Region Portion - Demographic Forecast - Round 8B								'10-'40	'10-'40
	2010	2015	2020	2025	2030	2035	2040	Chg	% Chg
Population	22,096	23,189	24,785	26,516	27,897	29,189	30,391	8,295	37.5%
Households	8,496	8,991	9,815	10,642	11,291	11,914	12,411	3,915	46.1%
Employment	8,210	8,656	9,367	10,116	10,341	10,753	11,016	2,806	34.2%
<b>Queen Anne's County Totals</b>								<b>Chg</b>	<b>% Chg</b>
Population	47,798	50,105	53,600	57,350	60,350	63,150	65,750	17,952	37.6%
Households	18,016	19,067	20,815	22,567	23,943	25,264	26,317	8,301	46.1%
Employment	19,267	20,264	21,930	23,685	24,211	25,176	25,790	6,523	33.9%
<b>Queen Anne's County - Baltimore Region Portion of County Totals</b>									
Population	46.2%	46.3%	46.2%	46.2%	46.2%	46.2%	46.2%		
Households	47.2%	47.2%	47.2%	47.2%	47.2%	47.2%	47.2%		
Employment	42.6%	42.7%	42.7%	42.7%	42.7%	42.7%	42.7%		

Source: Local Jurisdictions; Cooperative Forecasting Group; Baltimore Metropolitan Council.



# Round 8B



## For More Information

Shawn Kimberly  
(410) 732-0500 X1026  
skimberly@baltometro.org  
www.baltometro.org



Baltimore Metropolitan Council



19