



TETC Freight Program
Presentation to BRTB Freight Movement
Task Force
March 24, 2022



Today



Introduction – TETC Coalition



TETC Freight Program Overview



TETC Freight Program Highlights



WHO IS THE COALITION?



— THE EASTERN
TRANSPORTATION
COALITION

CONNECTING FOR SOLUTIONS

ABOUT THE EASTERN TRANSPORTATION COALITION

- 17 States and DC
- 190 agencies
- Transportation, Toll, Bridge, MPOs

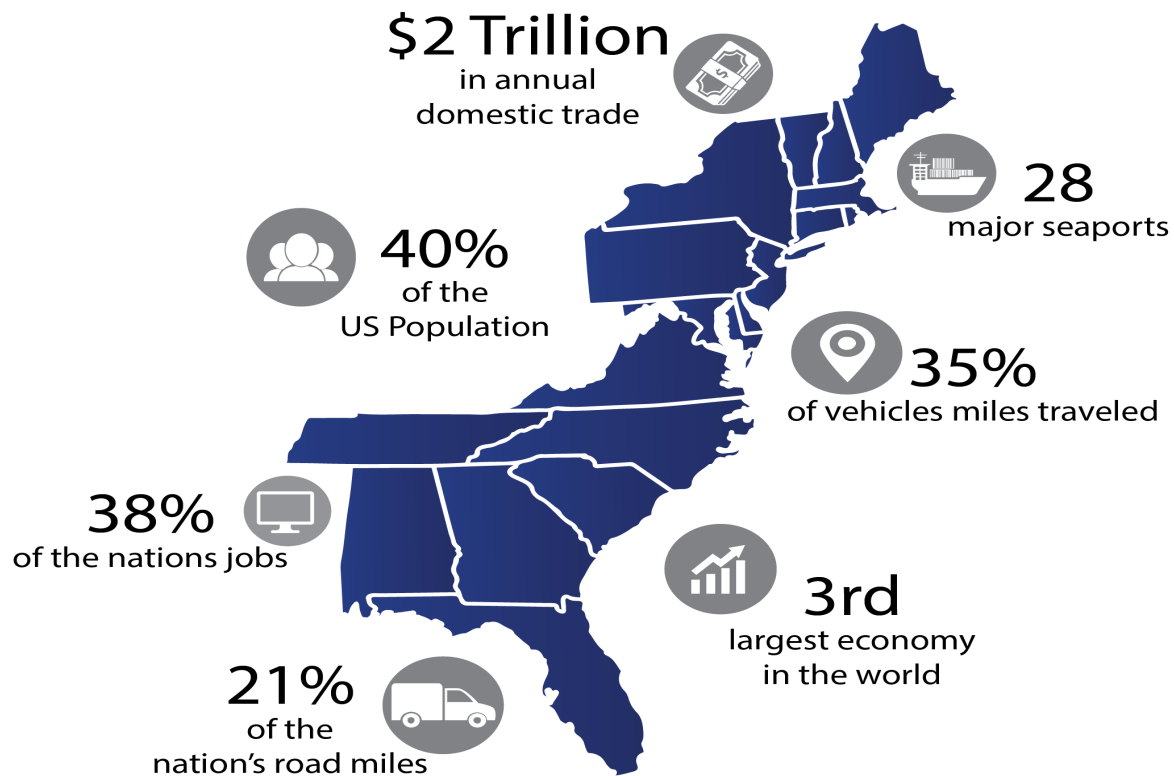


Our newest member...



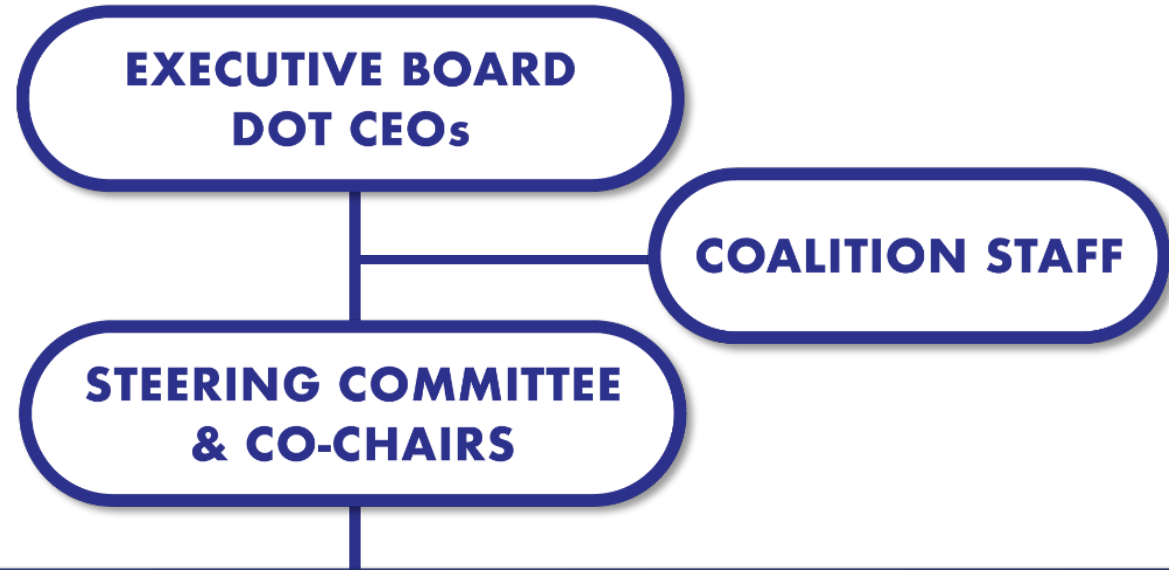


The Eastern Transportation Coalition Region





THE COALITION STRUCTURE



PROGRAM TRACK COMMITTEES

TRANSPORTATION SYSTEMS MANAGEMENT & OPERATIONS

VPP MARKETPLACE

DATA TOOLS & USER GROUPS

TRAVELER INFORMATION

*TRAFFIC INCIDENT /
EVENT MANAGEMENT*

OPERATIONS ACADEMY

FREIGHT

FREIGHT PLANNING

FREIGHT DATA

TRUCK PARKING

SUPPLY CHAIN PERFORMANCE

FREIGHT ACADEMY

INNOVATION IN TRANSPORTATION

*CONNECTED &
AUTONOMOUS VEHICLE*

TOLLING RECIPROCITY

MILEAGE-BASED USER FEE



TETC Freight Program



TETC Freight Program

Emphasis areas:

- Freight Planning
- Freight Data
- Truck Parking
- Supply Chain Performance
 - Safety and Reliability
 - Addressing freight for weather, disruptions
- Innovations impacting Freight Industry
 - Connected/Automated Vehicles
 - Truck Platooning
 - Integration of Alternative Fuel Vehicles



TETC Freight Committee

Comprised of public agency staff from DOTs, Transportation Authorities, MPOs and related agencies

➤ Planning, Operations, Policy

- Focuses efforts on the movement of freight across multiple jurisdictions and across multiple modes.
- Share best practices
- Support states in developing and implementing state freight and operational plans that support freight/supply chain movement
- Support states in access to and understanding and application of freight data resources
- Support Staff Development

TETC Freight Data Working Group



Objective:

- Serve as a “user group” for freight data
 - Sharing innovative applications of data for freight planning
 - Leverage experiences as agencies procure/integrate freight data from
 - TETC TDM “Marketplace”
 - FAF Disaggregation project
- Begin meetings late spring 2022



TETC Truck Parking Working Group

A forum for TETC State DOTs and MPOs, Planning and Operations staff

- Share recent activities and various approaches to address truck parking needs
 - What works and is not working well
- Leverage knowledge base from national and agency work
 - Studies, RFPs, SOWs, Project Implementation
- Consider the unique attributes and perspective of this corridor
- Serve as a resource to connect members and information]

- Meets bi-monthly





TETC Freight Program Highlights



TETC Truck Parking Matrix Repository

Objective:

- Create a repository of information on truck parking activities and materials as a resource for TETC members
 - Type of Activity (study, capacity expansion project of existing locations, real time parking information system, brand new capacity at new)
 - Status and date or estimated date (In procurement, Underway, Planned, Completed)
 - Agency Project Manager/contact information
 - Vendor(s) (if applicable)
 - Links to final reports/project deliverables as applicable
 - Links to Procurement, SOW or other relevant materials if available
 - Cost
 - Project cost and if grant, award amount and match
 - Cost-per-space-added calculation if available
 - Funded (e.g., federal grant, state funds, PPP, other)





Supply Chain Performance - Safety and Reliability:

Addressing freight for congestion, weather disruptions

- Enhance safety, reduce system disruptions from crashes, due to congestion, weather
 - Provide desired information that is accurate, reliable, timely and accessible to truckers
 - Closures, slow/stopped traffic alerts, detours





TETC TIS Summit – TSMO/Freight Event

Topic: Improving Safety: Implementing New Traveler Information Services for Commercial Vehicles

- 100+ Attendees

Presentations:

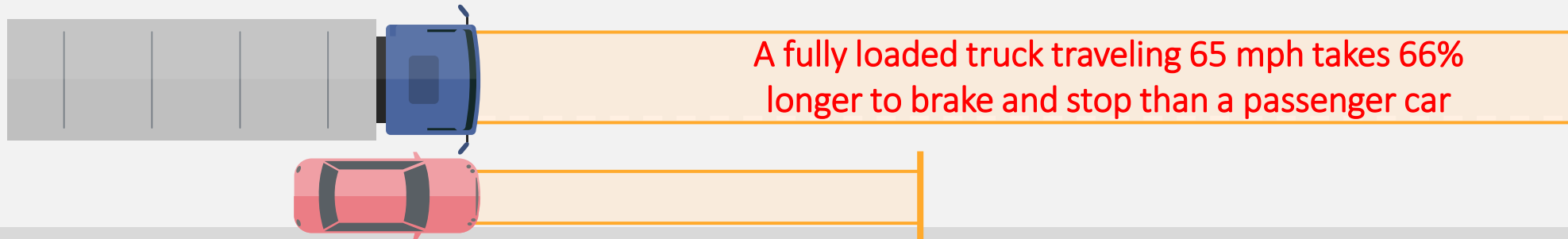
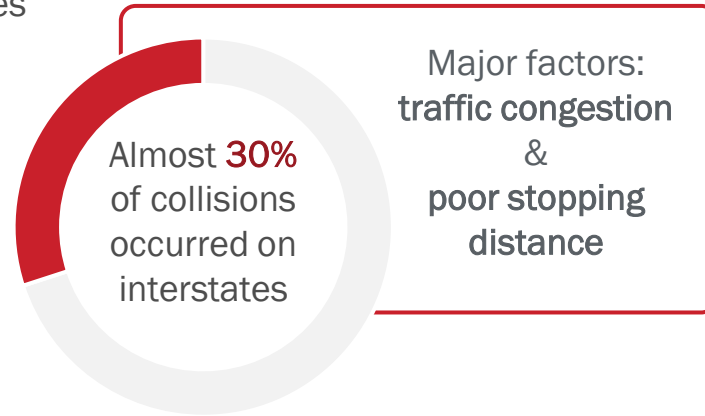
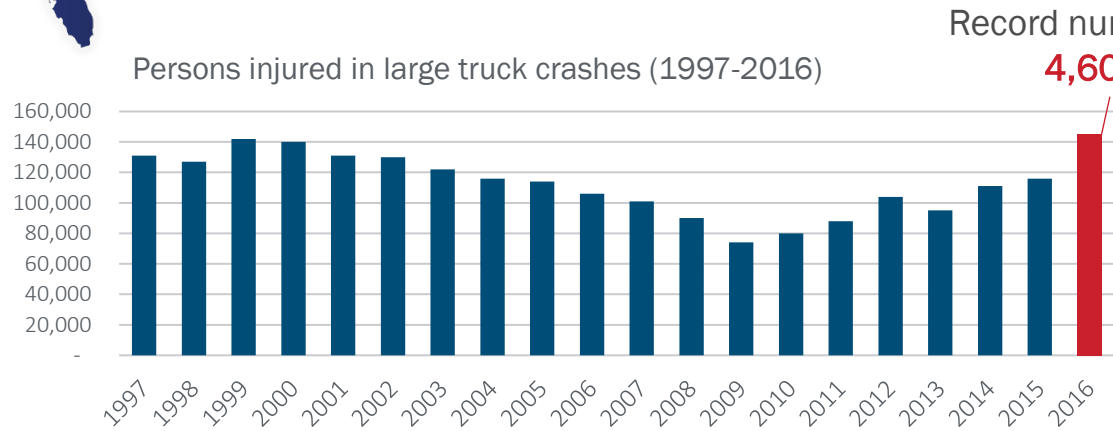
- NC and NJ programs on truck safety alerts
- PA Turnpike – Low Bridge Clearance





Road Congestion is a Critical Safety Issue

Reducing congestion reduces dangerous and unanticipated slowdowns – and reduces collisions





Why is it important that truckers get good, reliable Traveler Information?



Tractor-trailer crash cause over 10 mile backup on I-95 south in Caroline County

Freight data in new TETC Transportation Data Marketplace

A variety of freight related data including the following:

- Travel Time, Speed and Volume data (as well as reliability)
- Origin and Destination information for long-haul and regional fleets,
- Parking data including availability and utilization.
- In addition, commodity movement is also being provided.

Vendors awarded:

- Future Mobility
- Geotab
- INRIX
- Quetica
- Streetlight



TETC FAF Disaggregation



Project

Objective

- Support states in freight planning and related activities
- Provide members Freight Analysis Framework (“FAF”) disaggregated data
- Builds on TETC work to enhance agency staff data knowledge
- Save time/\$ for all members states by providing an enhanced data product



EASTERN TRANSPORTATION COALITION



0, 2021

*Formerly the I

Freight Analysis Framework (FAF)

- A federal database of regional freight flows

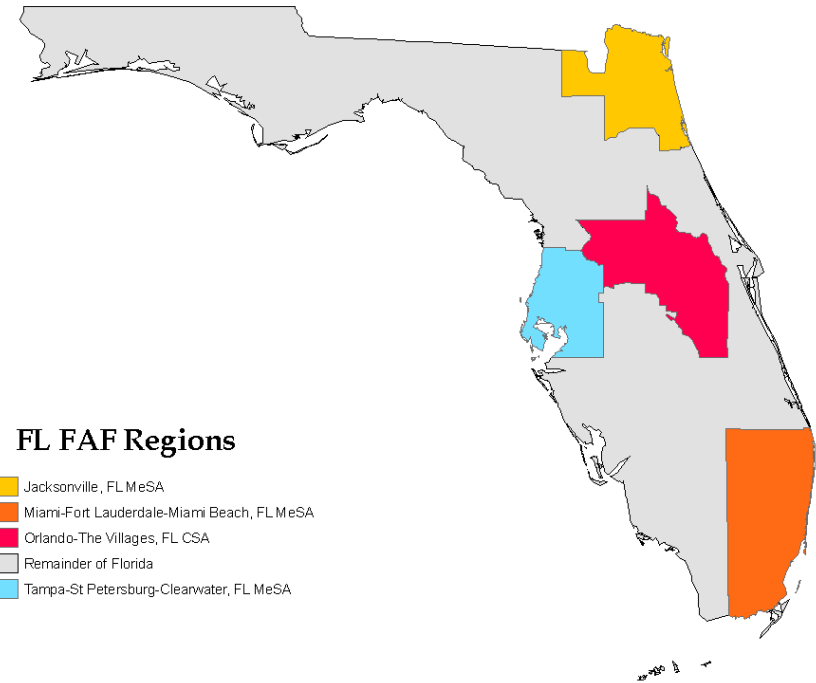
State (S)	Trade Type	Domestic Mode	Within the given state (S to S)		Outbound from the given state (S to all other states)		Inbound to the given state (all other states to S)	
			tons_within	tons_within_pctg	tons_out	tons_out_pctg	tons_in	tons_in_pctg
New York	Total Flow		401,038.1	100.0%	128,317.2	100.0%	207,023.1	100.0%
		Air (include truck-air)	14.3	0.0%	203.3	0.2%	285.2	0.1%
		Multiple modes & mail	2,118.6	0.5%	5,689.8	4.4%	15,988.3	7.7%
		Other and unknown	163.5	0.0%	334.7	0.3%	149.8	0.1%
		Pipeline	35,156.7	8.8%	24,734.2	19.3%	61,829.9	29.9%
		Rail	10,508.7	2.6%	9,828.3	7.7%	13,688.2	6.6%
		Truck	350,459.5	87.4%	85,449.3	66.6%	113,436.4	54.8%
		Water	2,616.6	0.7%	2,077.6	1.6%	1,645.4	0.8%
New York	Domestic Only		374,639.8	93.4%	99,800.3	77.8%	151,255.0	73.1%
		Air (include truck-air)	0.1	0.0%	15.9	0.0%	50.8	0.0%
		Multiple modes & mail	1,007.6	0.3%	4,588.5	3.6%	10,222.0	4.9%
		Pipeline	29,805.7	7.4%	20,135.0	15.7%	55,828.4	27.0%
		Rail	9,268.7	2.3%	2,385.8	1.9%	4,600.7	2.2%
		Truck	331,941.1	82.8%	70,771.9	55.2%	80,505.1	38.9%
		Water	2,616.6	0.7%	1,903.3	1.5%	48.0	0.0%
			13,213.0	3.3%	3,475.2	2.7%	41,153.9	19.9%
New York	Export	Air (include truck-air)	4.3	0.0%	48.0	0.0%	143.0	0.1%
		Multiple modes & mail	404.6	0.1%	123.6	0.1%	4,298.4	2.1%
		Other and unknown	74.1	0.0%	325.9	0.3%	145.5	0.1%
		Pipeline	2,045.5	0.5%	0.0	0.0%	6,001.5	2.9%
		Rail	207.2	0.1%	815.0	0.6%	5,980.1	2.9%
		Truck	10,477.4	2.6%	2,015.6	1.6%	23,572.0	11.4%
		Water	0.0	0.0%	147.0	0.1%	1,013.5	0.5%
			13,185.2	3.3%	25,041.8	19.5%	14,614.2	7.1%
New York	Import	Air (include truck-air)	9.8	0.0%	139.4	0.1%	91.3	0.0%
		Multiple modes & mail	706.5	0.2%	977.7	0.8%	1,467.9	0.7%
		Other and unknown	89.5	0.0%	8.9	0.0%	4.3	0.0%
		Pipeline	3,305.6	0.8%	4,599.2	3.6%	0.0	0.0%
		Rail	1,032.8	0.3%	6,627.4	5.2%	3,107.4	1.5%
		Truck	8,041.1	2.0%	12,661.8	9.9%	9,359.4	4.5%
		Water	0.0	0.0%	27.3	0.0%	583.9	0.3%

- An assignment of the average number of freight-hauling trucks to individual highway segments on the national network



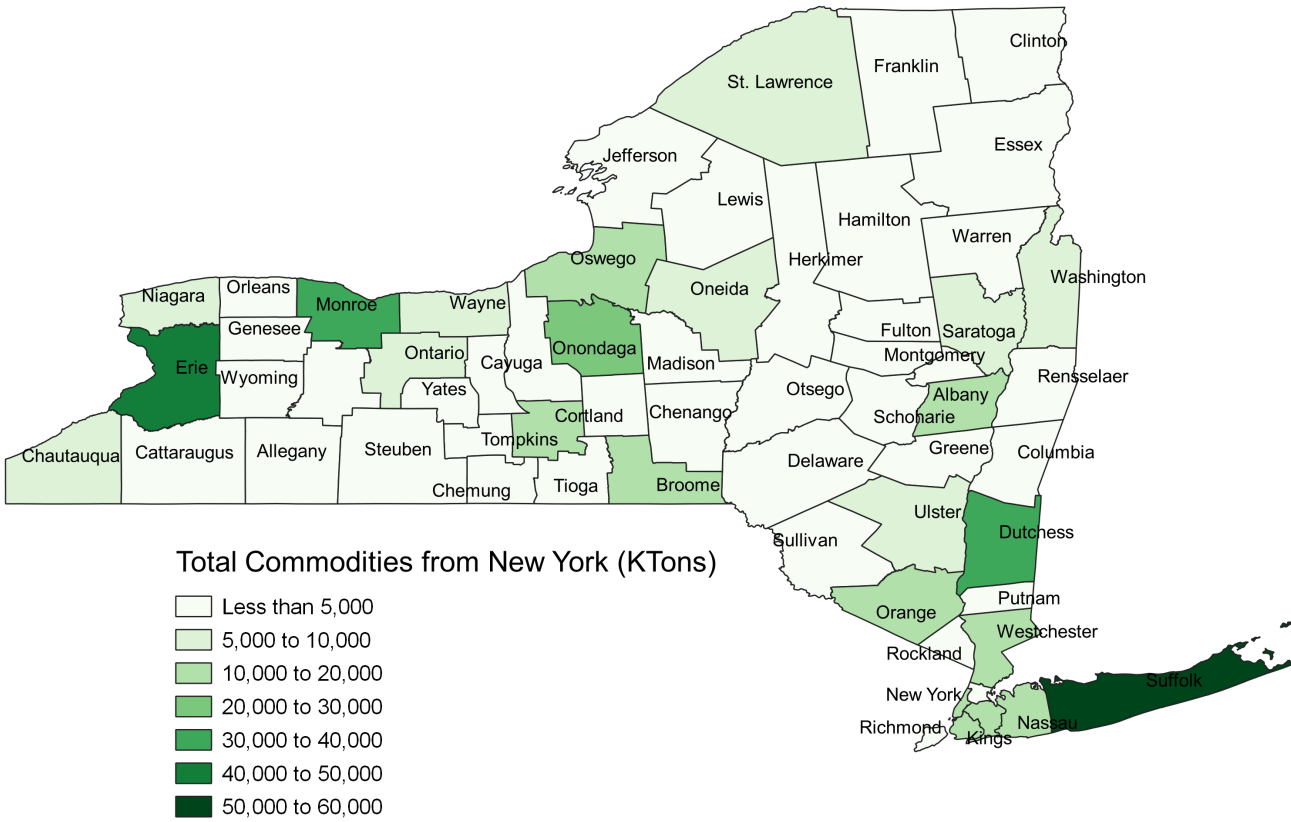
Why Disaggregate? Can Fill Small Geography Data Needs

- Fill gap in available data or complement other data sources procured by agencies
- Help integration with statewide freight planning efforts and MPO plan/program development
- Help identify freight needs and improvement strategies
- Help performance-based planning

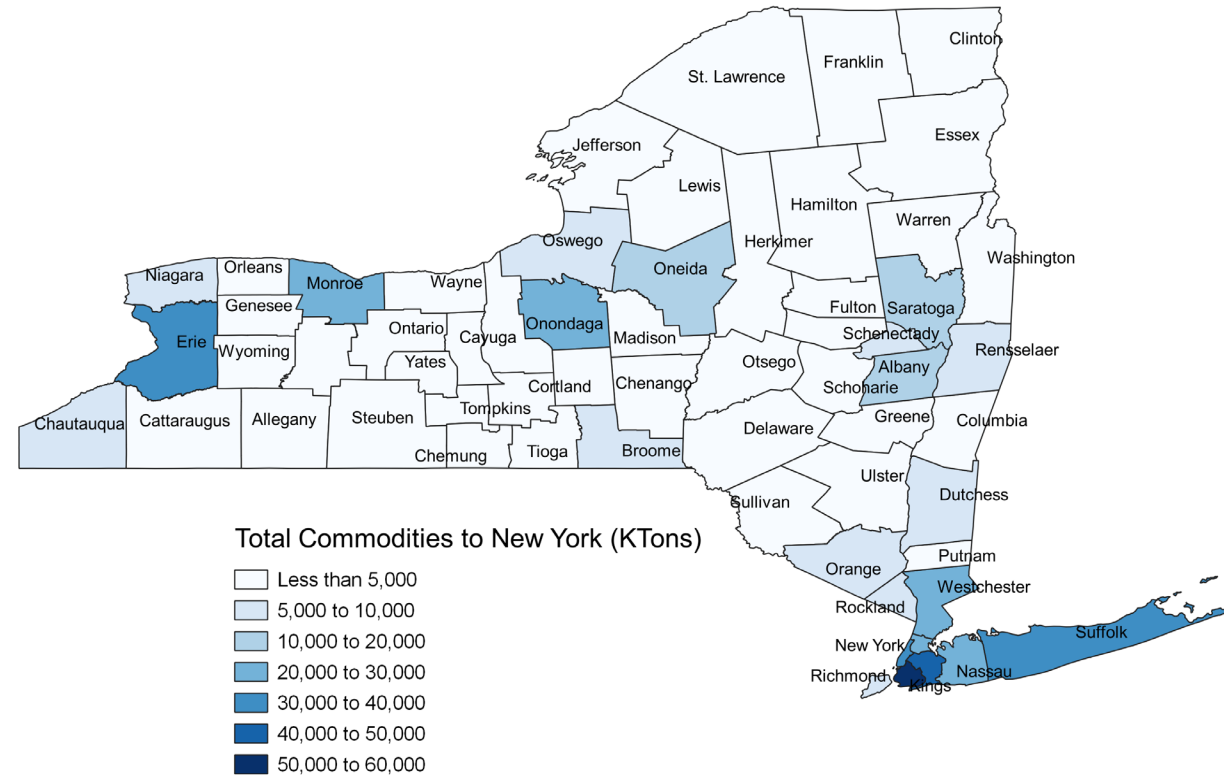


More than half of freight movements happening within TETC states are internal to that specific state. This highlights the need for a disaggregation approach that can distribute this freight to geographies below the MSA and/or state level.

New York Commodity Flows

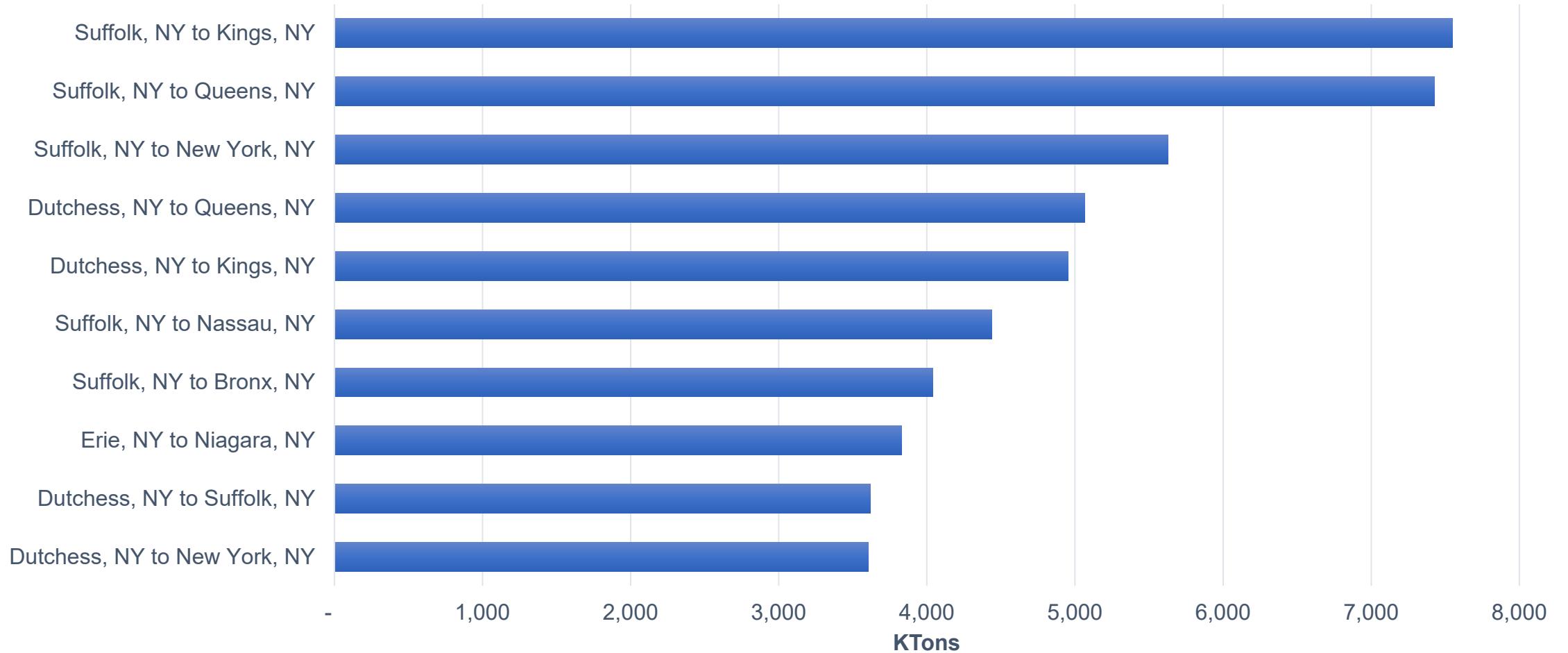


Commodities from NY Counties (KTons)

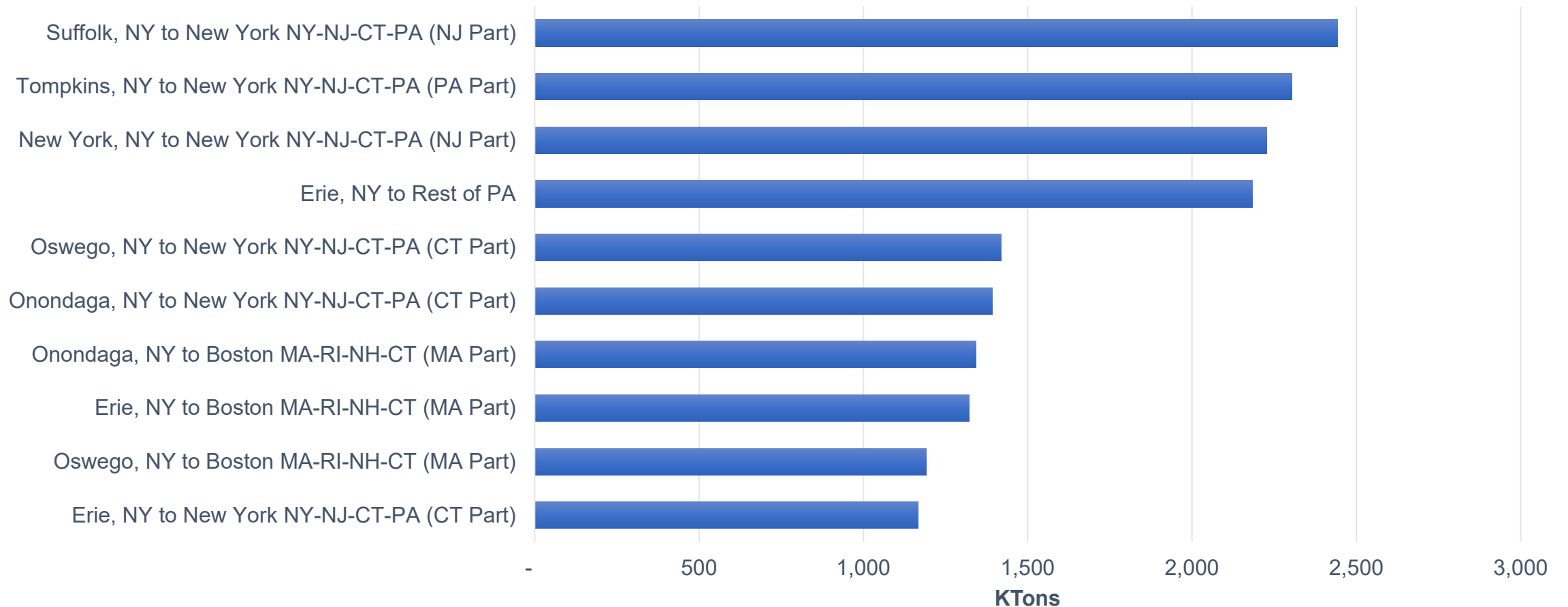


Commodities to NY Counties (KTons)

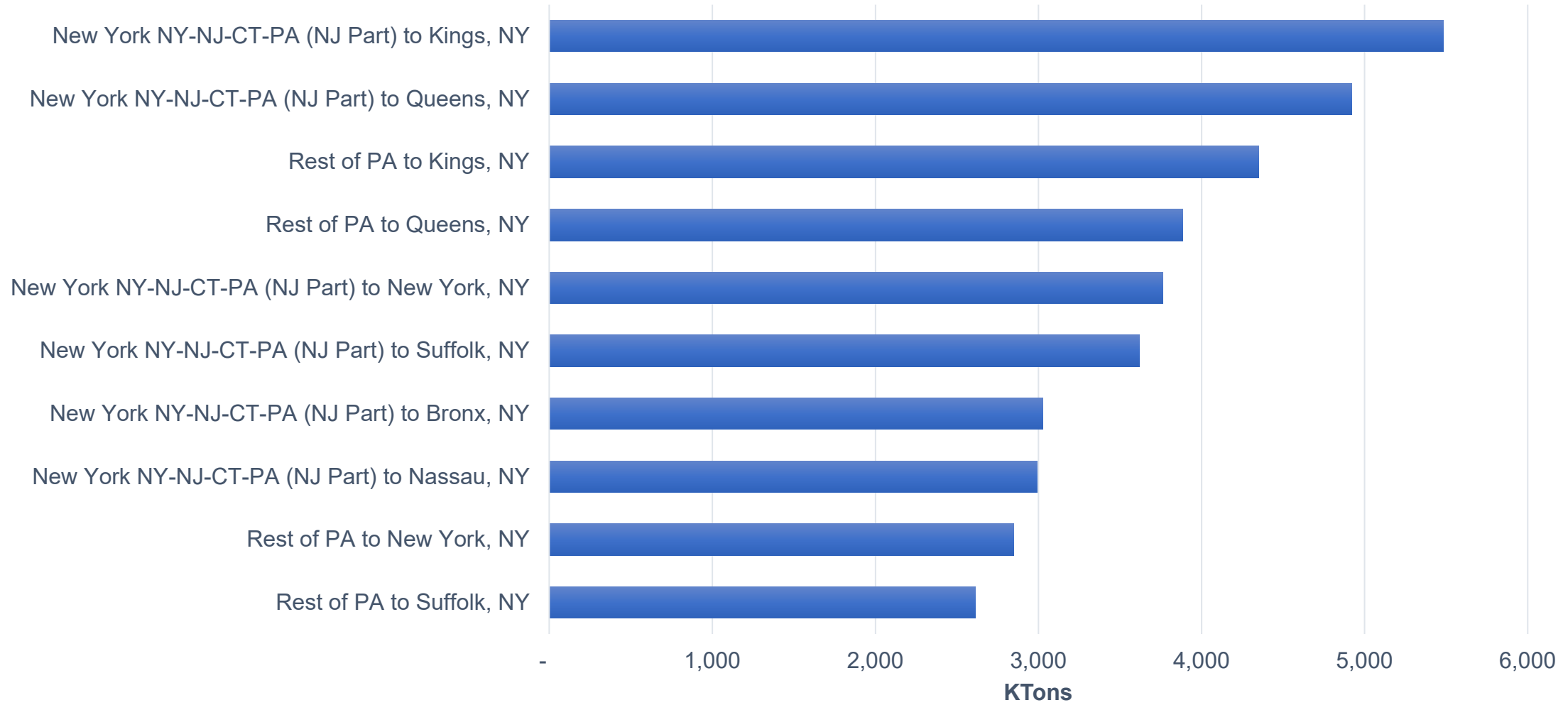
Example: Top 10 County to County Flows - NY



Example: Top 10 Domestic Destinations - NY



Example: Top 10 Domestic Origins - NY



FAF Disaggregation



Webinar on disaggregation methodology approach and data output examples held with TETC agencies on November 5



Final Technical Memorandum on Methodology provided to agencies



FAF Disaggregated files for **all Coalition states and key border states** distributed to member agencies



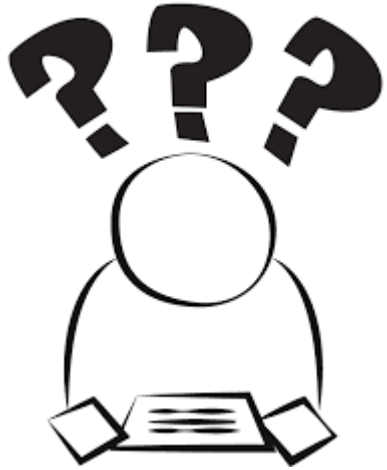
Review/share agency experiences/applications using FAF disaggregated data in TETC Freight Data Working Group

*“Wonderful to have this data!”-
Pam Cotter, RIDOT*

*“Thank you for sharing this data as it will be very helpful in our Freight Plan update, especially with freight flow forecasting” –
Linsey Callaghan, RI Statewide Planning.*



Freight Data Matrix Project: The need to “Demystify” Freight Data

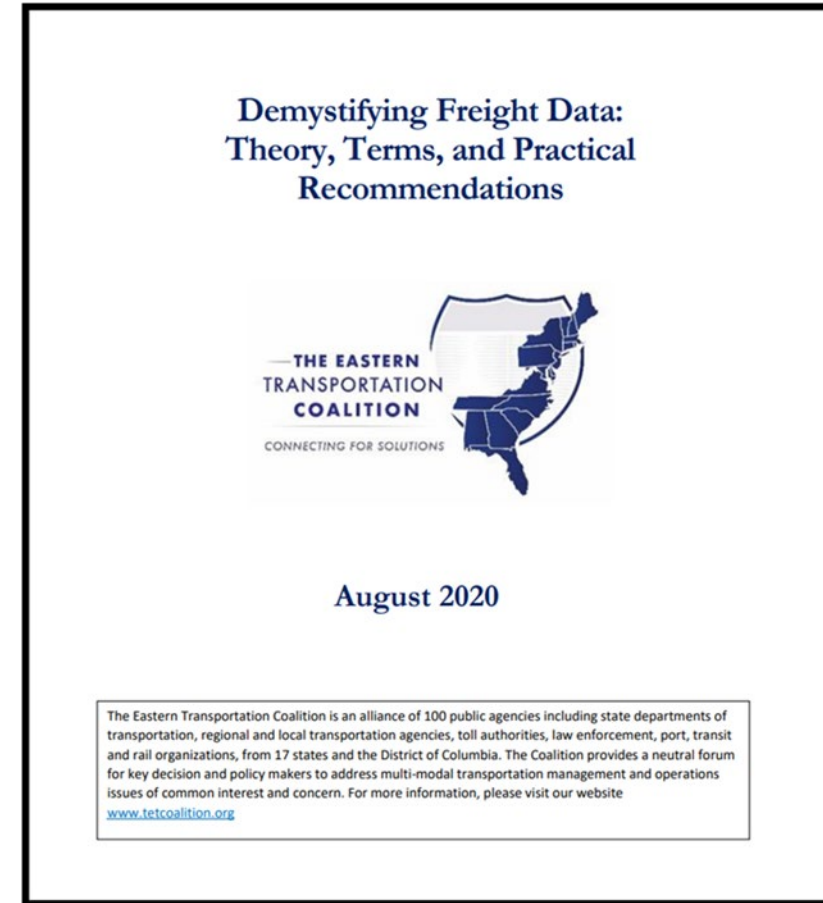


- Agencies face growing emphasis on understanding freight activity
- More software and data resources emerging/evolving applicable to freight
- Evaluating and effectively using new sources of data can be a challenge for public sector planners.
- Assist public sector practitioners in their understanding of various data sources that may be applicable to their work.



Freight Data Matrix Project

- Gives background on the theoretical context around freight data
- Provides practical recommendations for public agency transportation planners/practitioners
- Provides some clarification of data terms
 - <https://tetcoalition.org/freight-program/>



Freight Academy

An immersion program for public sector staff



- Helping planning, operations and policy staff better understand freight as an integral part of the transportation system;
- Engage with private sector entities and facility managers to advance understanding of transportation impacts
- Increase awareness of the dynamic changes in the goods movement industry





THANK YOU!

Contact: mgparker@tetcoalition.org

Connecting for Solutions

Follow us at: tetcoalition.org

On LinkedIn: <https://www.linkedin.com/company/tetc/>