



CMP Committee

June 7, 2022



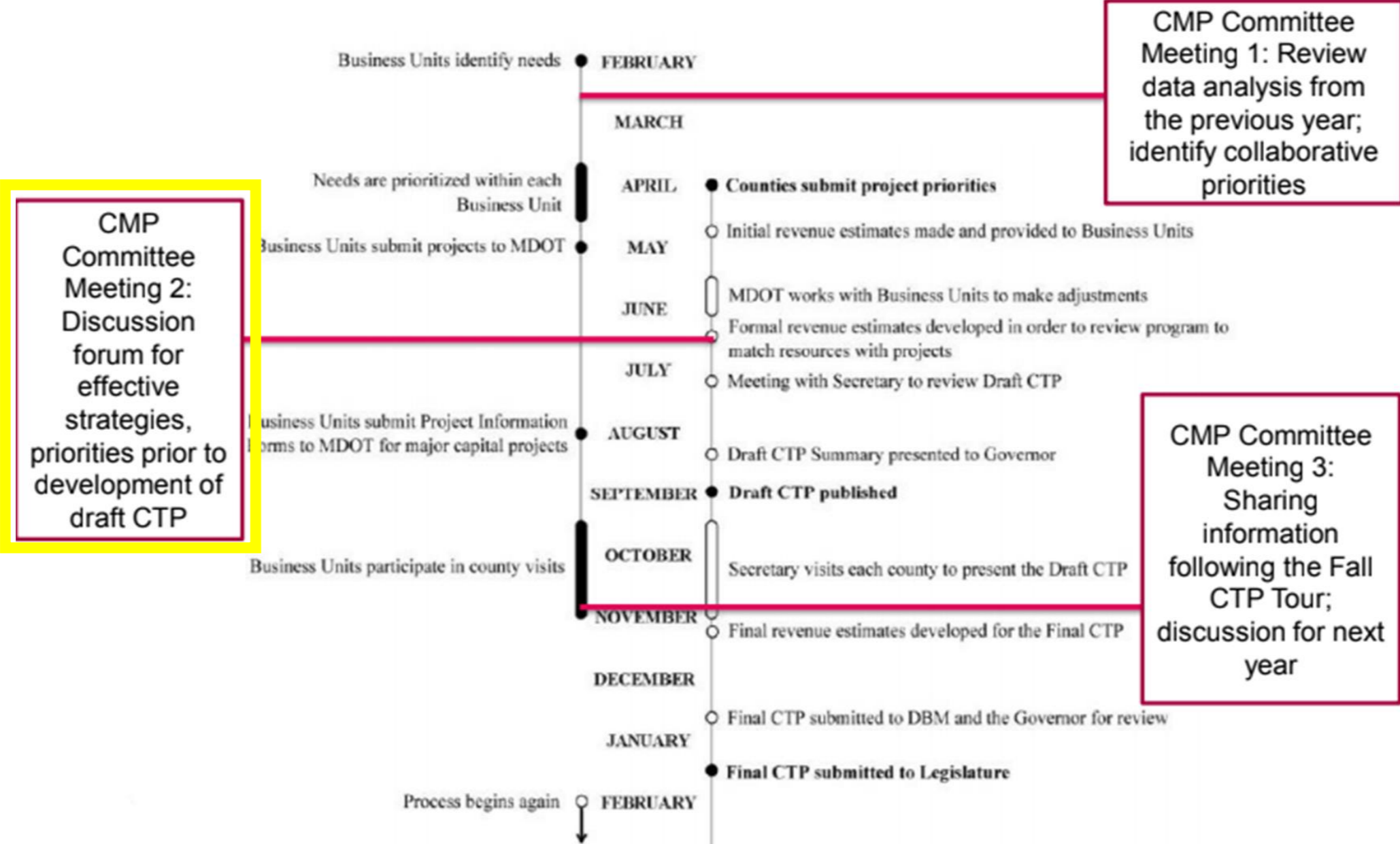
Agenda

1. **WELCOME AND INTRODUCTIONS** (5 min.)
2. **APPROVAL OF MINUTES FROM FEBRUARY 1, 2022 MEETING** (5 min.)
3. **MEETING OBJECTIVE** (5 min.)
4. **UPDATES ON REGIONAL BOTTLENECK REPORT** (10 min.)
Mr. Ed Stylc, BMC, will provide an update on the new format for the regional bottleneck report.
5. **DISCUSSION ABOUT REGIONAL CONGESTION PROJECT GRANT IDEAS TO PROPOSE UNDER THE FEDERAL IIJA** (10 min.)
The group will discuss congestion mitigation project proposal ideas that could be submitted under one of the various federal Infrastructure Investment and Jobs Act programs.
6. **DEBRIEF OF 2022 PRIORITY LETTER DEVELOPMENT PROCESS** (20 min.)
The group will discuss the 2022 priority letter development process, how the proposed regional text could be improved, and ideas for next year.
7. **UPDATE ON CONGESTION-RELATED PERFORMANCE MEASURES** (15)
Ms. Toria Lassiter, MDOT SHA, will provide an update on state efforts to update the federal congestion-related transportation performance measures.
8. **OTHER BUSINESS** (5 min.)

3. Meeting Objective

- Discuss regional congestion project – decide on action?
- Identify improvements to including regional considerations in priority letter process

Reminder: CMP Committee Schedule



4. Quarterly Congestion Analysis Report Update

History

- Quarterly Congestion Analysis Report
- Also known as the “Bottleneck Report
- BMC has issued these reports since 2011
- Data obtained from the RITIS Probe Data Analytics Suite

2021 Format

- Previous format was well received
- With consultant suggestions the report ballooned to 73 pages
- The desire was to condense the report down while implementing “flashier” graphics and tell an even better story

Top 10 Bottlenecks – 4th Quarter 2021

Ranked by Base Impact - the aggregation of queue length over time for congestion at each location in mile minutes. It is then weighted by **Total Delay** – Raw speed drop weighted by VMT factor.

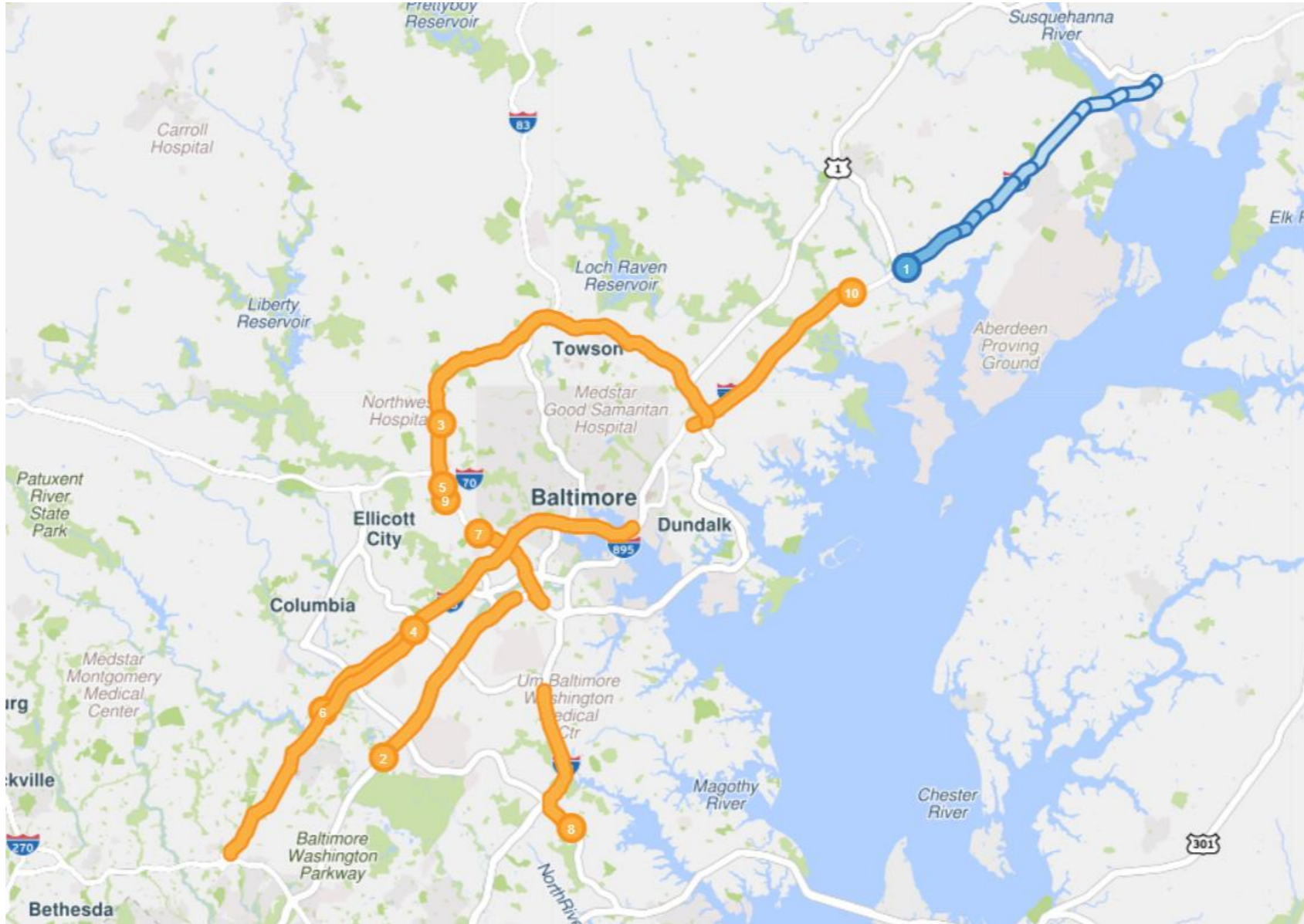
Rank	Location	Previous Quarter Ranking	Average max length (miles)	Average Daily Duration	All Events/ Incidents	Volume Estimate (AADT)
1	I-95 S @ MD 24/EXIT 77	2	5.95	1 h 51 m	228	55,208
2	MD 295 S @ MD 198	1	3.08	3 h 14 m	140	47,272
3	I-695 OL @ MD 26/EXIT 18		2.55	1 h 28 m	495	97,894
4	I-95 N @ MD 100/EXIT 43	6	4.62	1 h 21 m	346	102,960
5	I-695 OL @ I-70/EXIT 16		3.06	1 h 41 m	369	103,876
6	I-95 S @ MD 216/EXIT 35	9	5.43	44 m	819	102,207
7	I-695 IL @ MD 372/WILKENS AVE/EXIT 12	8	2.00	1 h 28 m	170	98,509
8	I-97 S @ MD 178/EXIT 5		2.99	1 h 52 m	136	58,595
9	I-695 OL @ US 40/EXIT 15	10	4.48	40 m	252	103,178
10	I-95 N @ MD 152/EXIT 74	7	7.36	35 m	382	84,254

IL = Inner Loop

OL = Outer Loop

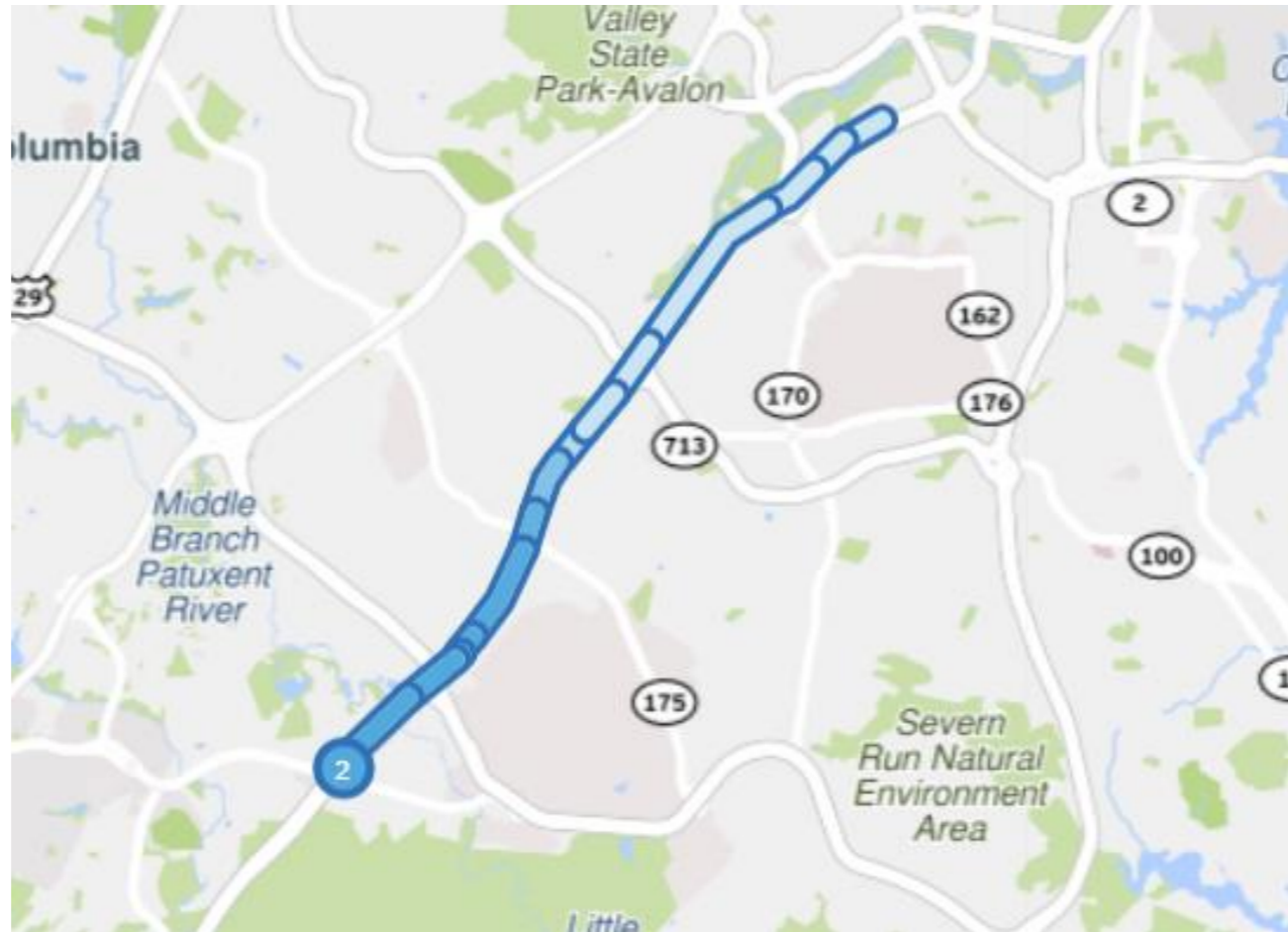
Top 10 Bottlenecks – 4th Quarter 2021

Site Map



#2 Ranked Bottleneck – 4th Quarter 2021 – Location Map

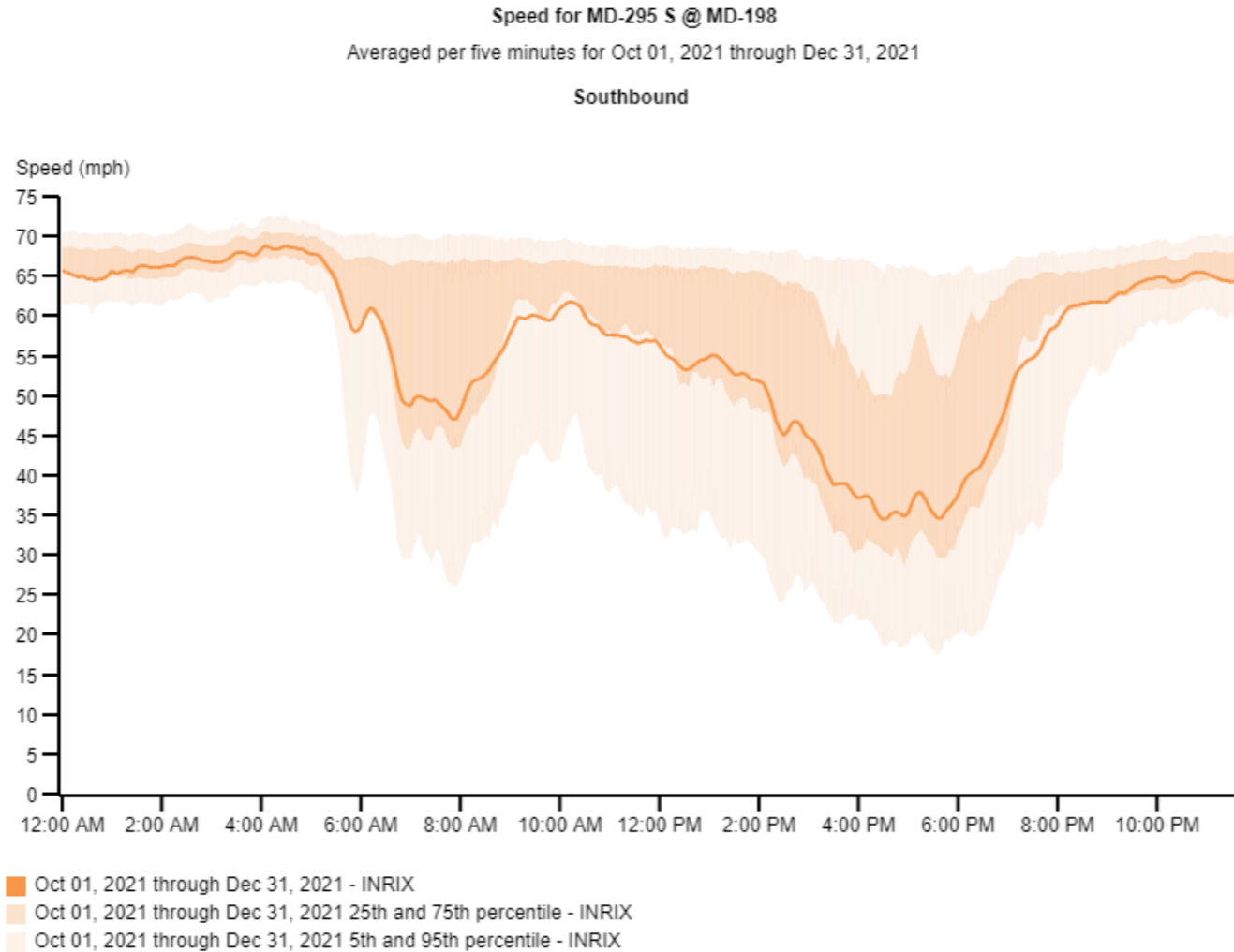
Location	Average max length (miles)	Average Daily Duration	All Events/ Incidents	Volume Estimate (AADT)
MD 295 S @ MD 198	3.08	3 h 14 m	140	47,272



Notes: Southbound PM congestion from MD 198 extending into the southern portion of the Baltimore region near Fort Meade occurring during both the morning and afternoon peak periods. Volume related delays caused by factors such as Baltimore commuters traveling to DC and Fort Meade and the MD 295 merge with the heavily congested Capital Beltway.

#2 Ranked Bottleneck – 4th Quarter 2021 – Average Speeds Graph

Location	Average max length (miles)	Average Daily Duration	All Events/ Incidents	Volume Estimate (AADT)
MD 295 S @ MD 198	3.08	3 h 14 m	140	47,272



#2 Ranked Bottleneck – 4th Quarter 2021 – Travel Times

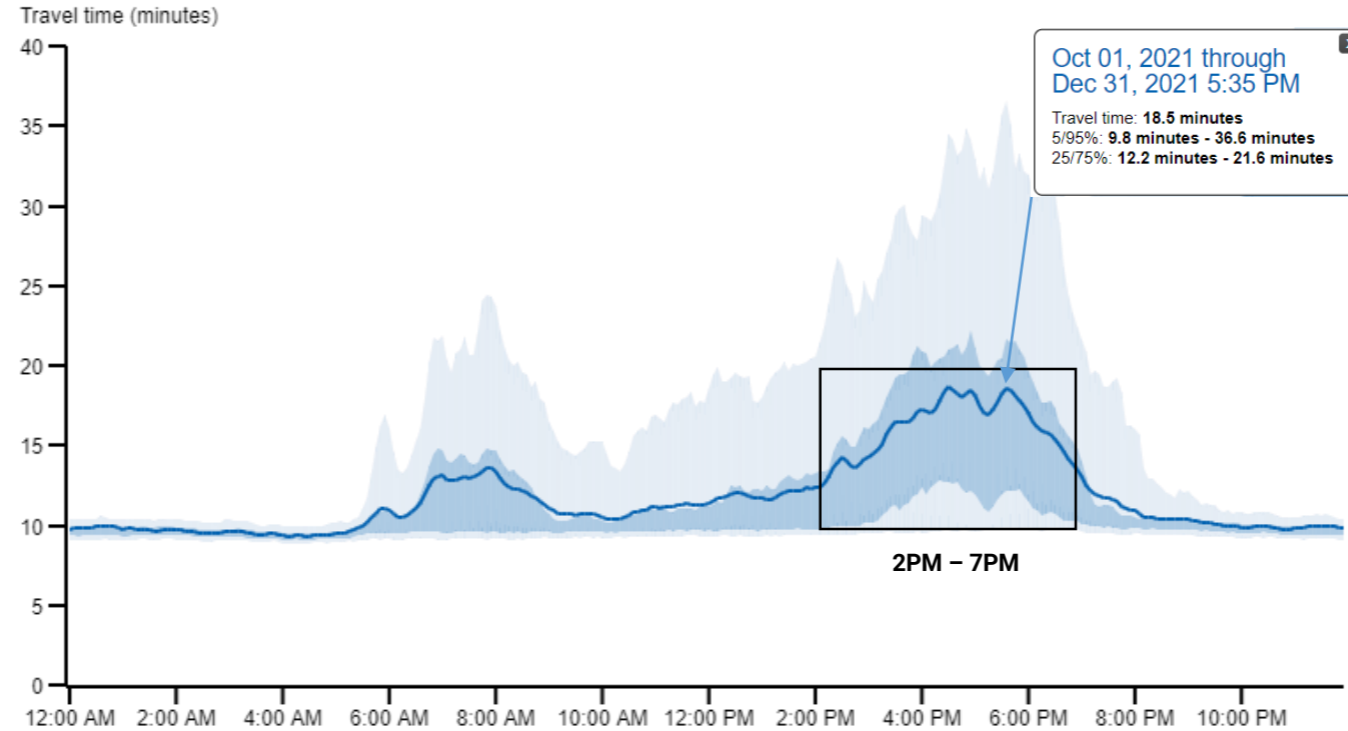
Location	Average max length (miles)	Average Daily Duration	All Events/ Incidents	Volume Estimate (AADT)
MD 295 S @ MD 198	3.08	3 h 14 m	140	47,272

Southbound

Travel time for MD-295 S @ MD-198

Averaged per five minutes for Oct 01, 2021 through Dec 31, 2021

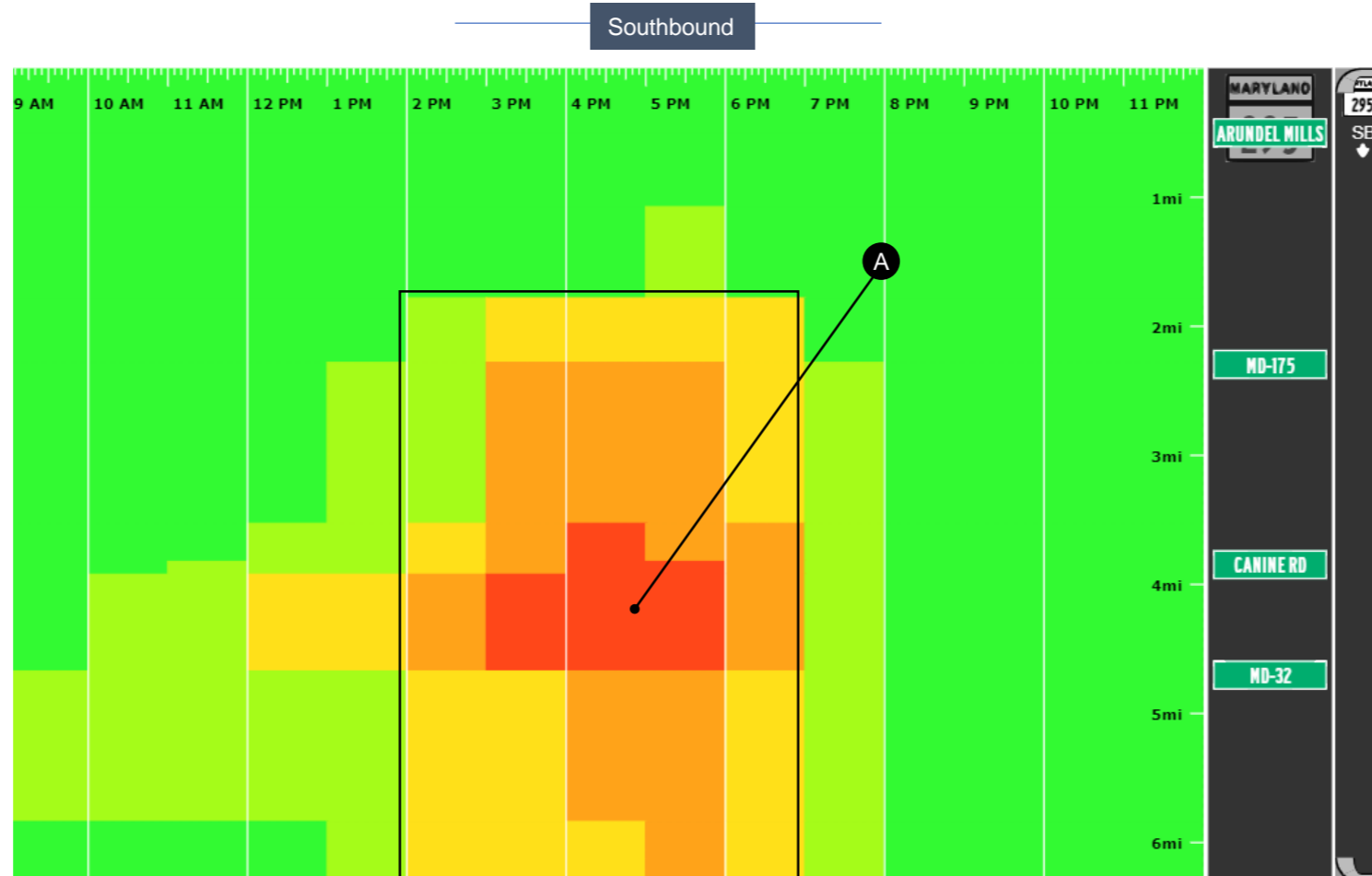
Southbound



- Oct 01, 2021 through Dec 31, 2021 - INRIX
- Oct 01, 2021 through Dec 31, 2021 25th and 75th percentile - INRIX
- Oct 01, 2021 through Dec 31, 2021 5th and 95th percentile - INRIX

#2 Ranked Bottleneck –4th Quarter 2021 – Congestion Scan

Location	Average max length (miles)	Average Daily Duration	All Events/ Incidents	Volume Estimate (AADT)
MD 295 S @ MD 198	3.08	3 h 14 m	140	47,272



Locations of Congestion (SB)
 A: 2PM - 7PM: MD-175 to MD-198

New Format

- Previous format was well received
- With consultant suggestions the report ballooned to 73 pages
- The desire was to condense the report down while implementing “flashier” graphics and tell an even better story
- The report template was developed by the University of Maryland CATT Lab with input from members of the RITIS/PDA Performance Measures Group
- BMC has been coordinating with the CATT Lab on the new report template to implement in the Quarterly Congestion Analysis Reports

Quarterly Congestion Analysis Report

Top 10 Bottlenecks in the Baltimore Region

1st Quarter 2022

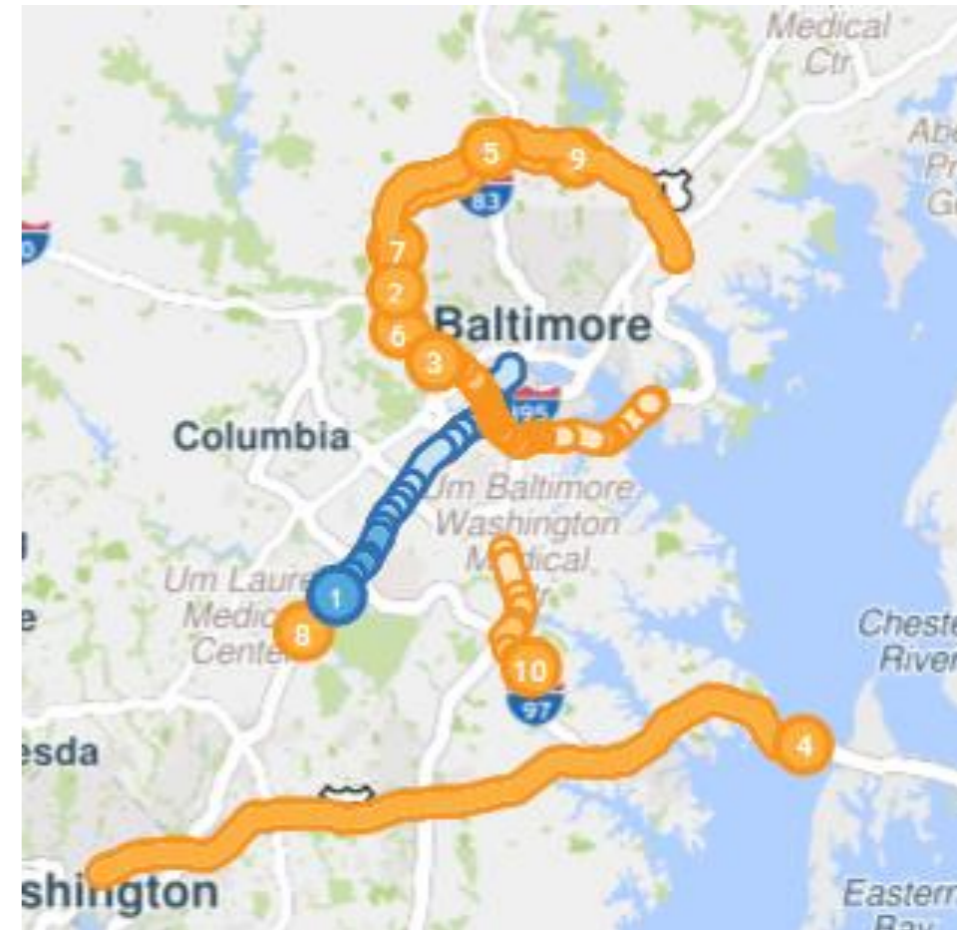
Top 10 Bottlenecks in the Region

Rank	Location	Previous Quarter Ranking	Avg. Max. Length (mi)	Avg. Daily Duration	All Events/ Incidents	Volume Estimate (AADT)
1	MD 295 S @ MD 198	2	2.86	2h19m	223	48,361
2	I-695 IL @ MD 122/Security Blvd/Exit 17	--	2.33	1h40m	249	102,916
3	I-695 IL @ MD 372/Wilkens Ave/Exit 12	7	1.93	1h2m	407	99,105
4	US 50 E @ Bay Bridge	--	4.42	52m	816	40,770
5	I-695 OL @ I-83/MD 25/Exit 23	--	3.38	39m	319	94,861
6	I-695 OL @ US 40/Exit 15	9	4.06	25m	663	102,236
7	I-695 OL @ MD 26/EXIT 18	3	2.09	46m	301	100,334
8	MD 295 S @ PG/AA Co Line	--	4.21	30m	243	45,447
9	I-695 IL @ Providence Rd/Exit 28	--	3.16	38m	299	84,773
10	I-97 S @ MD 178/Exit 5	8	2.31	58m	92	53,932

IL = Inner Loop

OL = Outer Loop

Red #s = highest value for that metric



Bottlenecks are ranked by **Base Impact** – the sum of queue lengths over the duration of the bottleneck and weighted by speed differential, congestion and total delay.



Southbound PM congestion from MD 198 extending into the southern portion of the Baltimore region near Fort Meade occurring during both the morning and afternoon peak periods.

Volume-related delays are most likely caused by factors such as Baltimore commuters to DC and Fort Meade and the MD 295 merge with the heavily congested Capital Beltway.

PK. AVG. SPEED

AM Peak | 7:45 AM
52.9 mph
(24% slower than free flow)

PM Peak | 5:35 PM
43.2 mph
(34% slower than free flow)

PK. TRAVEL TIME

AM Peak | 7:45 AM
16.5 min

PM Peak | 5:35 PM
20.2 min

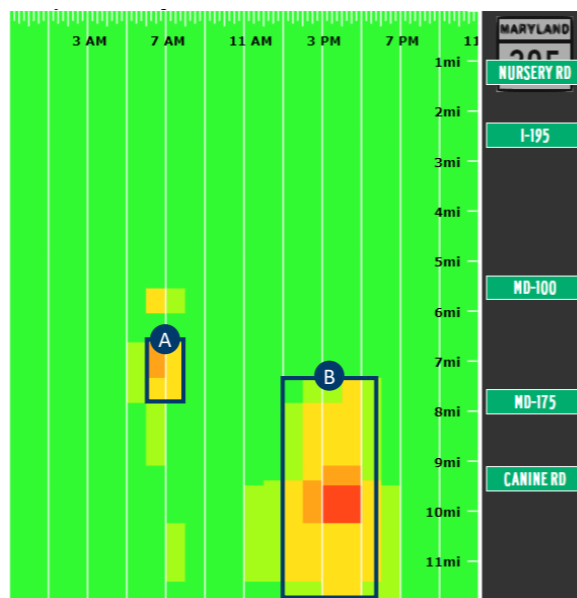
Q1 DELAY COST

Delay Cost
\$2.135M

Veh-hrs. of Delay
70,727 h

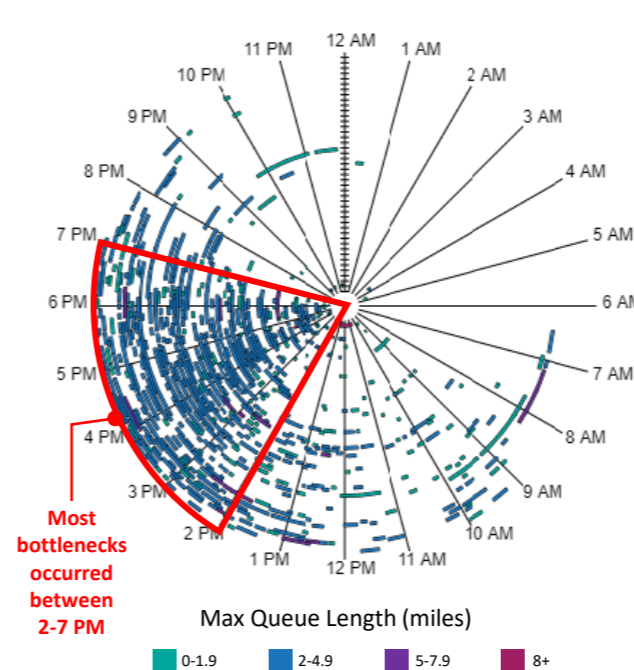
Congested Locations

- A** 7AM – 9AM Arundel Mills Blvd. to MD 175
- B** 2PM – 7PM MD 175 to MD 198



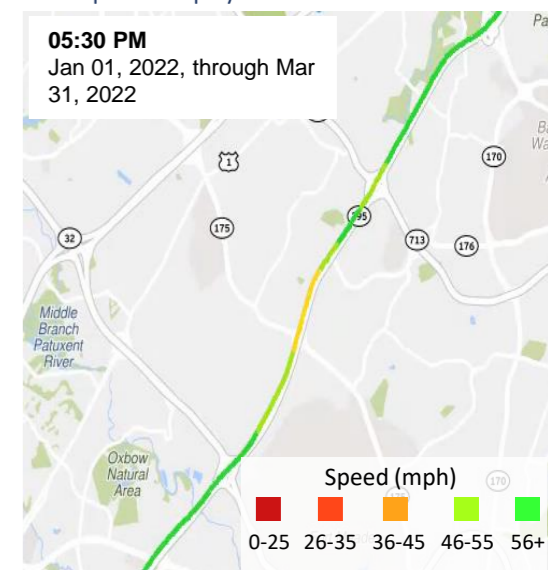
Bottleneck Occurrences

The center represents the beginning of **01.01.22** and the outer edge the end of **03.31.22**



Corridor Speeds Over Time

For animated playback of corridor speeds over time, click anywhere on the map below and press the play button..



5. Discussion About Regional Congestion Project Ideas for IIJA

- Questions (https://publicinput.com/CMP_Committee#1)
 - Please list your idea for a regional congestion project to submit under a IIJA program.
 - Which IIJA program does your project fall under?

6. Debrief of 2022 Priority Letter Development Process

Questions (https://publicinput.com/CMP_Committee#0):

- How was your experience working to incorporate regional text into your priority letter?
- Did you use the Online CMP Tool to help select projects? If yes, please describe how you used it.
- Was it helpful to have the priority letter projects from 2021 visible on the Online CMP Tool?
- Do you have suggestions for increasing the regional coordination process for priority letters (using/revising the regional text or any other approaches)?
- Please share any other thoughts/comments about how to incorporate a more regional perspective into the priority letter/project selection/CTP process?



6. Debrief of 2022 Priority Letter Development Process

How was your experience working to incorporate regional text into your priority letter?

We encountered resistance. The overall regional objective was understood but the priority letter has some very local politics.

54 minutes ago

We were able to use some of the text in the letter, so it was helpful.

an hour ago

We did it, it was hard to figure out how best to put it in there, but it worked out.

4 days ago

Did you use the Online CMP Tool to help select projects? If yes, please describe how you used it.

We went through it in meetings. We will continue to use the tool if available.

53 minutes ago

Yes, it also affirmed some of the past projects we included.

an hour ago

I didnt, I did use some of the same data sources that created the map and we have a lot of projects that are still on the list year over year, but its a good resource i need to make sure i use more often.

4 days ago

6. Debrief of 2022 Priority Letter Development Process

Was it helpful to have the priority letter projects from 2021 visible on the Online CMP Tool?

Yes that was very helpful.

53 minutes ago

Yes.

an hour ago

it is helpful

4 days ago

Do you have suggestions for increasing the regional coordination process for priority letters (using/revising the regional text or any other approaches)?

I think if the BRTB took a position on specific regional priorities with the members committing to putting the priorities into the local letters, it may be more effective. That said, it was an election year so the experience is probably not a very good yardstick.

50 minutes ago

I think maybe a better way to allow for local flavor in the text or just make it a section, these are regional priorities. But we got some question about the projects/priorities in there vs what we had as priorities.

4 days ago

6. Debrief of 2022 Priority Letter Development Process

Please share any other thoughts/comments about how to incorporate a more regional perspective into the priority letter/project selection/CTP process?

I think this is the right thing to try to do but it probably will not be easy.

50 minutes ago

its the first attempt, lets keep what works and keep working to push regionalism. We're going to need it for the bigger needs.

4 days ago

8. Other Business

- **CMP Committee chair position is still**
- **Next meeting: November 1, 2022**

