



# CMP Committee

## November 2, 2021



## AGENDA

1. **WELCOME AND INTRODUCTIONS** (5 min.)
2. **APPROVAL OF MINUTES FROM JUNE 1, 2021 MEETING** (5 min.)
3. **MEETING OBJECTIVE** (5 min.)
4. **DISCUSSION OF 2021 PRIORITY LETTERS/CTP PROCESS** (10 min.)

Attendees will share thoughts on the process to prepare 2021 priority letters and the 2021 CTP to identify opportunities for greater regional coordination.
5. **PREPARATION OF 2022 PRIORITY LETTERS AND REGIONAL PRIORITIES** (30 min.)

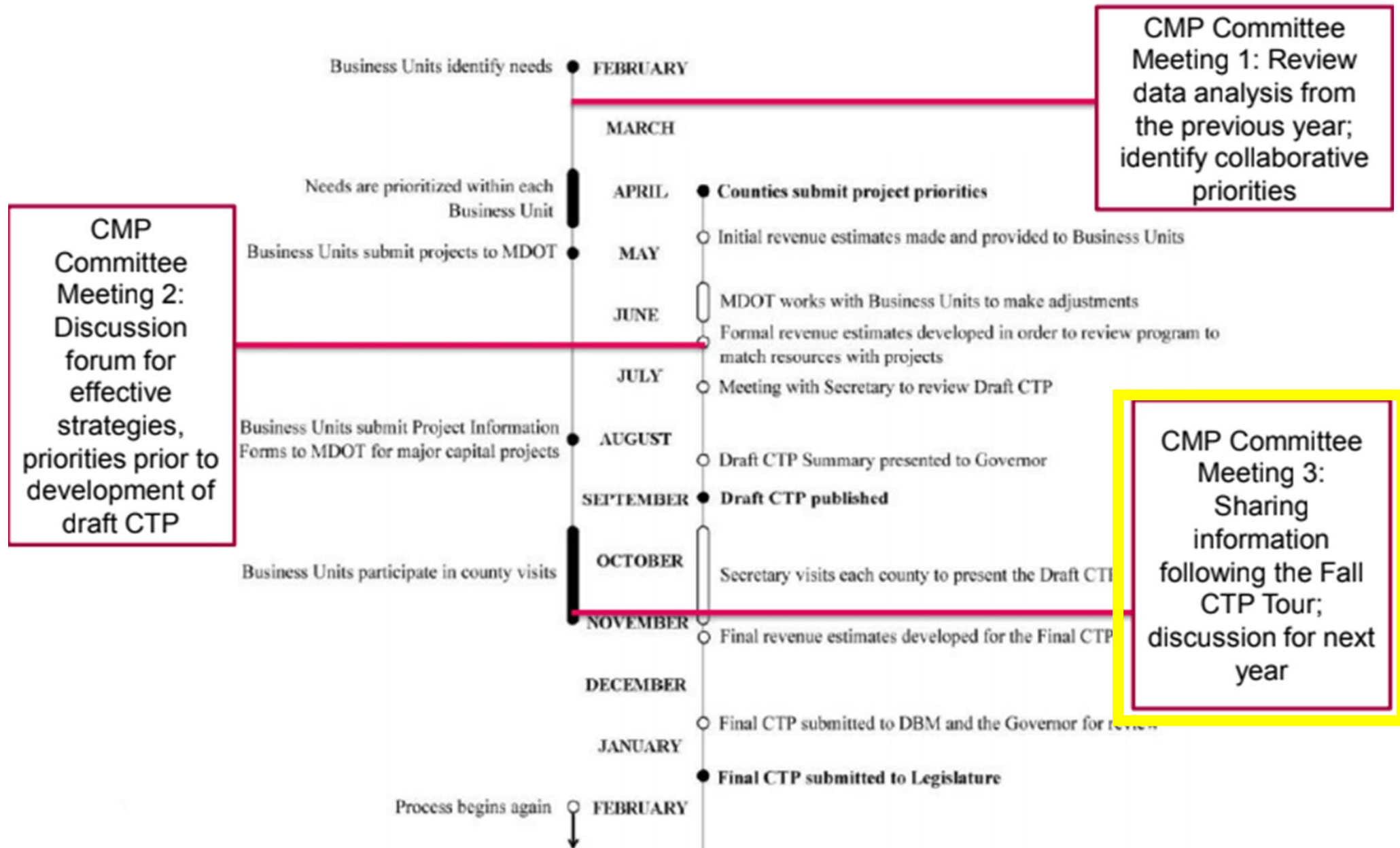
The group will discuss draft text for inclusion in 2022 priority letters to convey common regional priorities.
6. **CORRIDOR STUDY LOCATIONS** (15 min.)

The group will discuss proposed suggestions for corridor studies focused on congestion mitigation.
7. **OTHER BUSINESS** (5 min.)

# Meeting Objective

- Develop draft regional language for 2022 priority letters
- Identify corridors to study

# Reminder: CMP Committee Schedule



## 4. Discussion of 2021 Priority Letters/CTP Process

- Opportunities/ideas for regional coordination that arose during 2021 priority letter development

# 5. Preparation of Common Text for 2022 Priority Letters

- Develop common write up for priority letters:

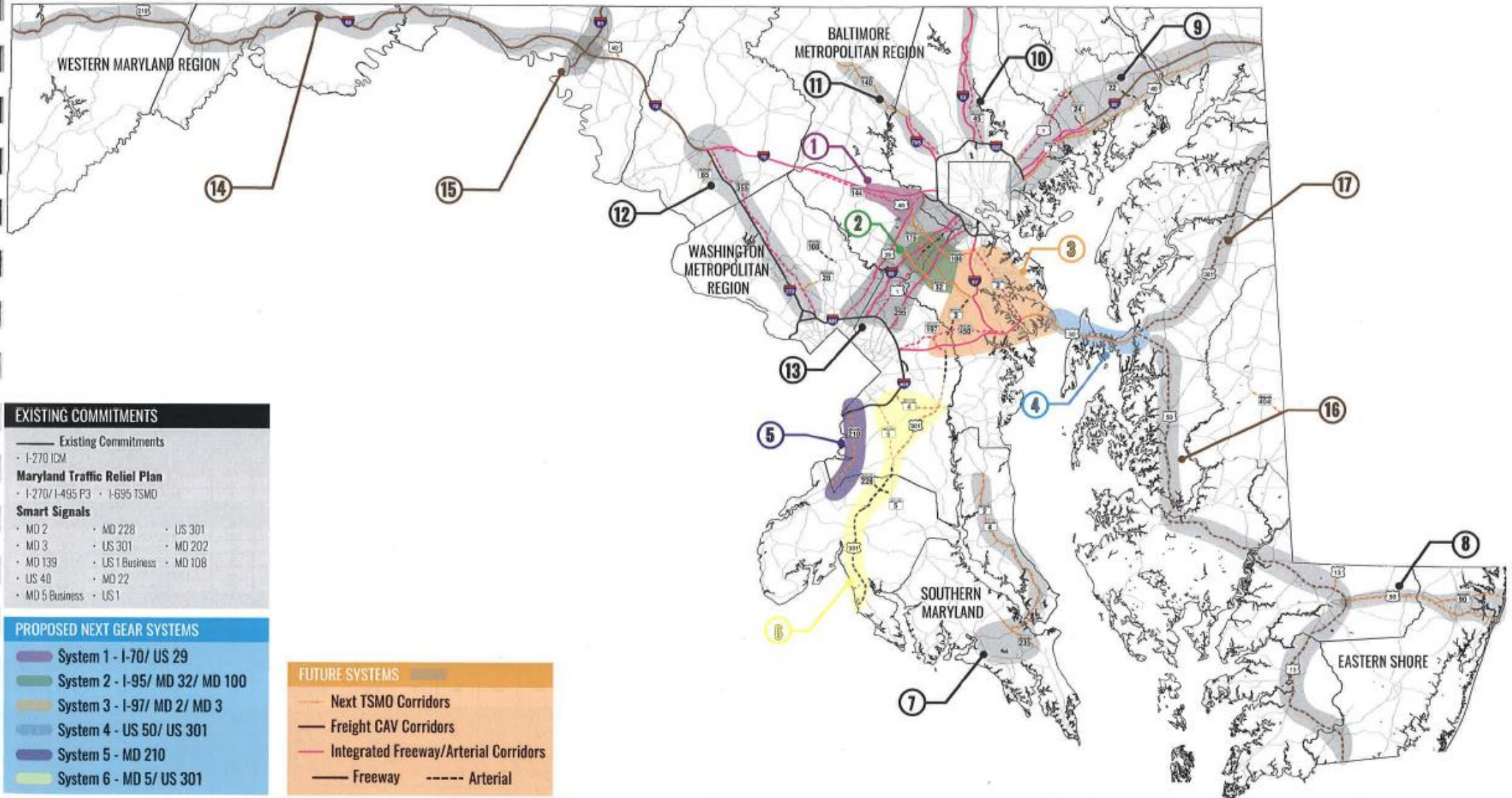
As members of the Baltimore Regional Transportation Board, we are very invested in addressing congestion and mobility within the Baltimore region. Therefore, we have identified several common cross-jurisdictional priorities for consideration.

- We strongly support the State's plans to implement TSMO strategies, especially prioritizing the TSMO System corridors in the region – 1, 2, 3, 4, 9, 10, 11, and 13 – which address our common interest in improving interjurisdictional mobility.
- We support the implementation of the high priority corridors in the Regional Transit Plan and request additional coordination as needed with local transit systems to facilitate mobility of transit users, particularly transit-dependent travelers.
- To facilitate this interjurisdictional coordination, we would particularly prioritize the following multi-jurisdiction corridors/projects that fall within our jurisdiction:
  - 
  -



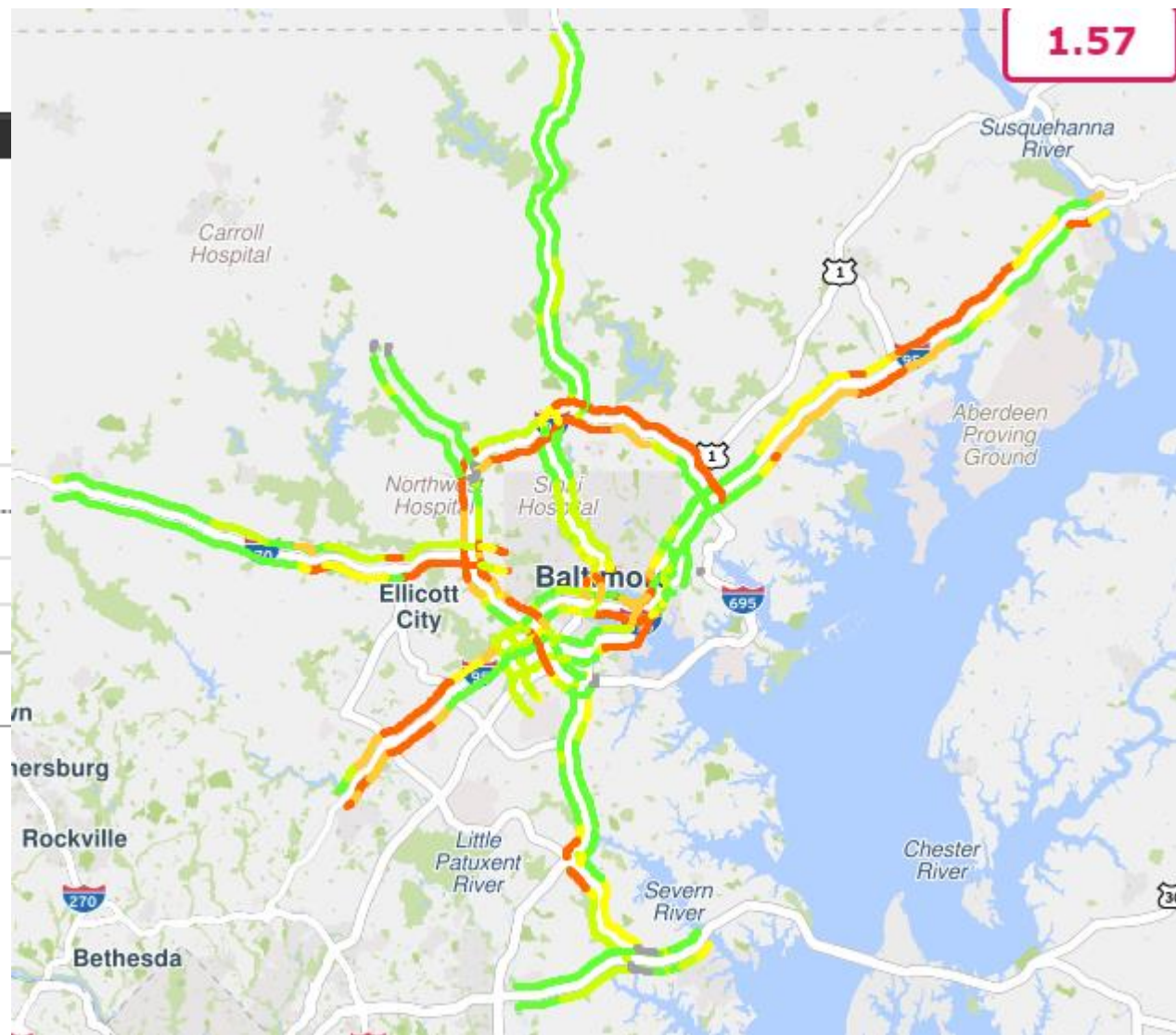
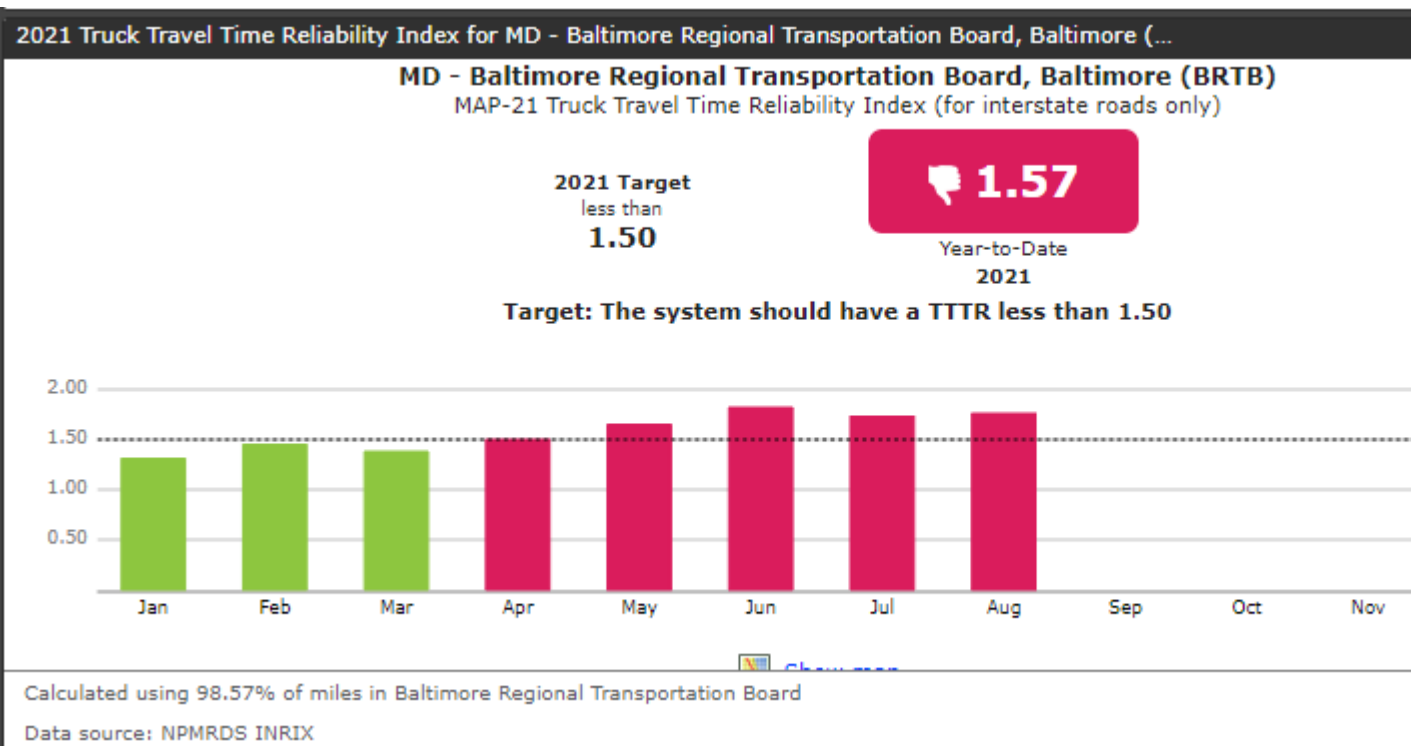
# MDOT SHA TSMO System Corridors

## TRANSFORMING MARYLAND'S TRANSPORTATION SYSTEM



# Level of Truck Travel Time Reliability

Travel time reliability is the consistency or dependability in travel times, as measured from day-to-day and/or across different times of the day.





# 6. Corridor Study Locations

- Roads near US 50 in Anne Arundel and Queen Anne's counties (for example, MD 18 in Queen Anne's County): what else can be done to encourage people to stay on US 50.
  - include MDOT SHA and MDTA
  - review what has been previously to avoid duplication of efforts
- MDOT MTA bus routes/corridors where buses experience significant congestion in Baltimore City, Baltimore County, Anne Arundel County
  - Top 10 Bottlenecks in the Baltimore Region for Non Limited Access Roads in the first quarter of 2021 showing MTA routes.

Rank	Location	Average max length (miles)	Average Daily Duration	All Events/Incidents	Volume Estimate (AADT)	MTA Routes - Main Street
1	MD-295 N @ BAYARD ST	0.29	8 h 21 m	349	32,500	69, 70, 210, 215
2	MD 7 S @ I-695/BALTIMORE BELTWAY LOOP	0.31	6 h 31 m	No Data	25,905	36, 56
3	US-1-BR S @ MD-24	0.38	11 h 31 m	No Data	15,331	
4	MD-140 E @ SUDBROOK LN	0.64	5 h 42 m	58	15,643	83, 89, 92
5	MD-450 E @ MD-2/SOLOMONS ISLAND RD	0.42	4 h 52 m	7	18,366	70
6	MD-24 N @ PLUMTREE RD	0.68	4 h 7 m	14	19,261	
7	WINDSOR MILL RD W @ GWYNNS FALLS PKWY	0.38	9 h 52 m	No Data	9,703	
8	MCCOMAS ST W @ I-95/E CROMWELL ST	0.23	2 h 42 m	No Data	63,182	71
9	MD-45 N @ MD-146/DULANEY VALLEY RD/TRAFFIC CIRCLE	0.36	5 h 32 m	No Data	10,485	RED, 51, 52
10	MD-45 S @ MD-131/SEMINARY AVE	0.78	3 h 31 m	37	18,003	RED, 93

# Ranked Bottleneck Monthly Comparison

2020 - 2021											Current Month	Location
Jul	Aug	Sep	Oct	Nov	Dec	Jan	Feb	Mar	Apr	May	Jun	
2	1	3	1	-	-	-	4	2	-	-	1	US-50 E @ WILLIAM PRESTON LANE BRG
9	3	2	3	3	2	3	3	1	2	1	2	MD-295 S @ MD-198
-	-	14	8	18	25	-	6	4	3	3	3	I-95 N @ MD-100/EXIT 43
-	-	-	18	12	-	-	-	-	10	2	4	I-95 N @ MD-24/EXIT 77
-	15	-	-	-	8	-	-	24	12	4	5	I-95 S @ MD-24/EXIT 77
1	5	1	11	-	-	-	-	-	16	10	6	US-50 W @ WILLIAM PRESTON LANE
-	-	-	-	-	-	-	-	-	-	-	7	I-95 N @ MILLARD E TYDINGS MEMO
-	-	-	21	22	-	-	-	-	-	7	8	I-95 S @ MD-216/EXIT 35
-	-	7	9	19	-	-	5	8	6	6	9	I-695 CW @ MD-372/WILKENS AVE/
-	-	-	-	-	-	-	-	-	-	-	10	I-95 N @ MD-543/EXIT 80
-	-	8	6	17	10	4	-	6	5	5	11	MD-295 N @ CANINE RD
-	12	5	5	1	-	-	1	3	8	-	12	I-695 CW @ PROVIDENCE RD/EXIT 2
-	-	-	7	-	-	22	-	-	-	-	13	I-95 S @ MD-152/EXIT 74
-	-	-	-	-	-	-	20	12	-	22	14	I-695 CCW @ US-40/EXIT 15
-	-	-	-	-	11	-	-	-	-	15	15	I-95 S @ MD-175/EXIT 41
-	-	-	-	-	-	-	-	-	-	13	16	I-695 CCW @ I-70/EXIT 16
-	-	-	-	-	-	-	-	-	21	-	17	I-695 CW @ EDMONDSON AVE/EXIT
-	-	-	-	-	-	-	7	15	14	18	18	I-695 CW @ MD-122/SECURITY BLVD
3	4	4	2	6	6	-	-	-	18	8	19	I-895 N @ HARBOR TUNNEL THWY (N
-	-	-	-	-	-	-	-	-	-	-	20	I-695 CW @ MD-147/HARFORD RD/E
-	-	-	-	24	22	-	-	-	14	-	21	I-70 E @ I-695/EXIT 91
-	23	-	-	2	13	5	-	-	-	-	22	I-95 N @ MD-32/EXIT 38
18	9	12	14	-	-	-	-	15	13	-	23	I-95 N @ MD-152/EXIT 74
-	-	25	-	-	-	-	-	-	-	-	24	I-695 CCW @ MD-26/EXIT 18
-	-	-	-	-	-	-	-	-	-	-	25	MD-3 N @ MD-175/ANNAPOLIS RD/M

Ranking 1 2 3

Using INRIX data

Updated Jun 30

2020 - 2021											Current Month	Location
Dec	Jan	Feb	Mar	Apr	May	Jun	Jul	Aug	Sep	Oct	Nov	
-	-	-	-	20	-	-	-	-	16	17	1	I-695 CCW @ MD-567/CROMWELL BR RD/EXIT 29
-	-	-	5	-	-	-	14	-	-	-	2	I-695 CW @ MD-144/FREDERICK RD/EXIT 13
-	-	-	-	-	-	-	-	-	-	-	3	I-695 CW @ I-83/EXIT 24
-	-	-	-	-	14	17	13	-	2	3	4	I-695 CCW @ I-70/EXIT 16
-	-	-	-	-	-	-	-	-	-	-	5	MD-295 N @ PRINCE GEORGE'S/ARUNDEL CO LINE
-	-	-	-	-	-	14	-	-	-	-	6	I-695 CW @ EDMONDSON AVE/EXIT 14
-	-	-	-	-	15	-	-	-	20	-	7	MD-295 S @ CANINE RD
-	-	-	-	-	-	-	-	-	-	-	8	I-895 N @ HARBOR TUNNEL THWY (SOUTH)
-	-	-	-	9	-	-	-	-	14	15	9	I-695 CW @ I-83/MD-25/EXIT 23
-	-	-	-	-	-	-	20	20	4	6	10	I-695 CCW @ MD-26/EXIT 18
-	-	-	-	-	-	-	-	-	-	-	11	I-895 S @ HARBOR TUNNEL THWY (SOUTH)
-	-	-	-	-	11	-	-	-	-	7	12	I-97 S @ MD-178/EXIT 5
-	-	-	-	-	-	-	-	-	-	-	13	I-695 CCW @ PROVIDENCE RD/EXIT 28
-	-	-	-	-	-	-	-	-	-	-	14	I-97 S @ US-50/US-301
-	-	-	-	-	-	-	-	-	-	-	15	I-895 S @ HARBOR TUNNEL THWY (NORTH)
-	-	20	12	-	20	15	6	-	13	12	16	I-695 CCW @ US-40/EXIT 15
-	-	-	-	-	-	-	-	-	-	-	17	I-895 S @ CHILDS ST/EXIT 9
-	11	-	9	-	10	-	-	-	6	9	18	I-695 CCW @ MD-122/SECURITY BLVD/EXIT 17
-	-	-	-	-	-	-	-	-	-	-	19	MD-100 E @ EXIT 7
-	-	-	-	-	-	-	-	-	-	-	20	I-70 E @ US-29/EXIT 87

Ranking 1 2 3

Using INRIX data

Updated Nov 1, 2021 2:32 PM

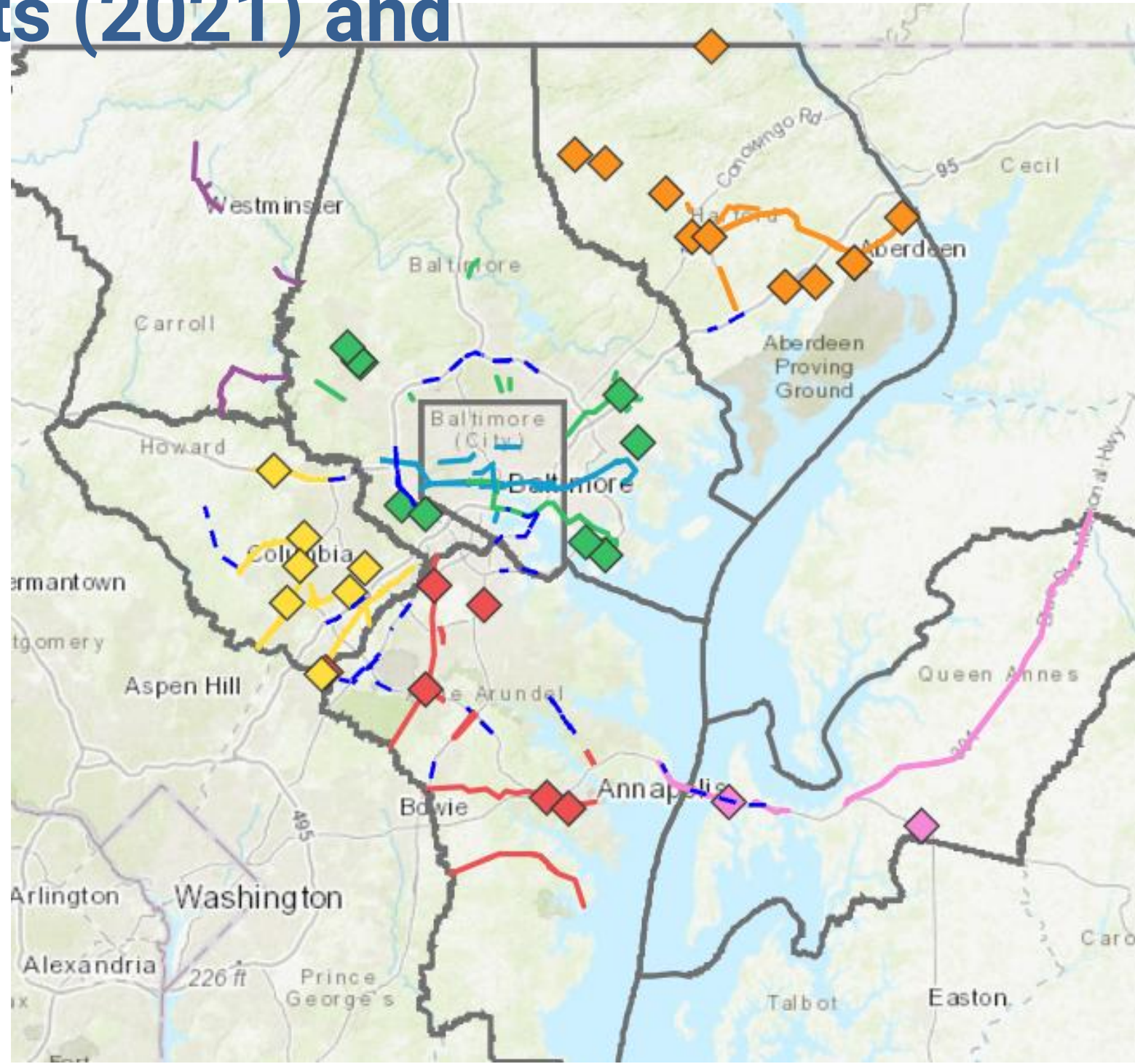
# Other Potential Regional Priority Corridors

- Priority letter projects that cross or end at jurisdictional boundaries.
  - Express Bus Link 163 (Baltimore City and County)
  - East West Transit Corridor (Baltimore City and County)
  - Bay Bridge Expansion Study (Anne Arundel and Queen Anne's County)
  - MARC Penn Line Additional service (through Anne Arundel County)
  - Transit extension on US 29 (Howard County to Montgomery County)
- Truck movement and delivery trucks will only increase, consider truck bottlenecks
- Expansion of the smart signals program; identify regional corridors to advocate for

# Priority Letter Projects (2021) and Bottlenecks (2018)

From [Online CMP Tool](#)

(view in Slideshow mode to enable link)





# 7. Other Business

- Committee chair
- Next meeting: February 1, 2022