

LABOR FORCE PARTICIPATION RATE

Alfred Sundara, AICP

LABOR FORCE PARTICIPATION RATE

- Labor-force - civilians over the age of 16 who are working or looking for a job
- Labor-force Participation Rate (LFPR) - Share of civilian population who are over the age of 16 who are working or looking for a job

LFPR CALCULATIONS

- LFPR methodology is similar to the one used to project the national LFPR by Bureau of Labor Statistics (BLS)
- LFPR is calculated separately for males and females
- Historic LFPR is used to look at past trends

LFPR CALCULATIONS

- LFPR are developed for different age groups
- Changes and percent changes of national LFPR is applied to derive local (county) LFPR's
- Adjustment factors are applied to offset drastic increase or decreases to LFPR's

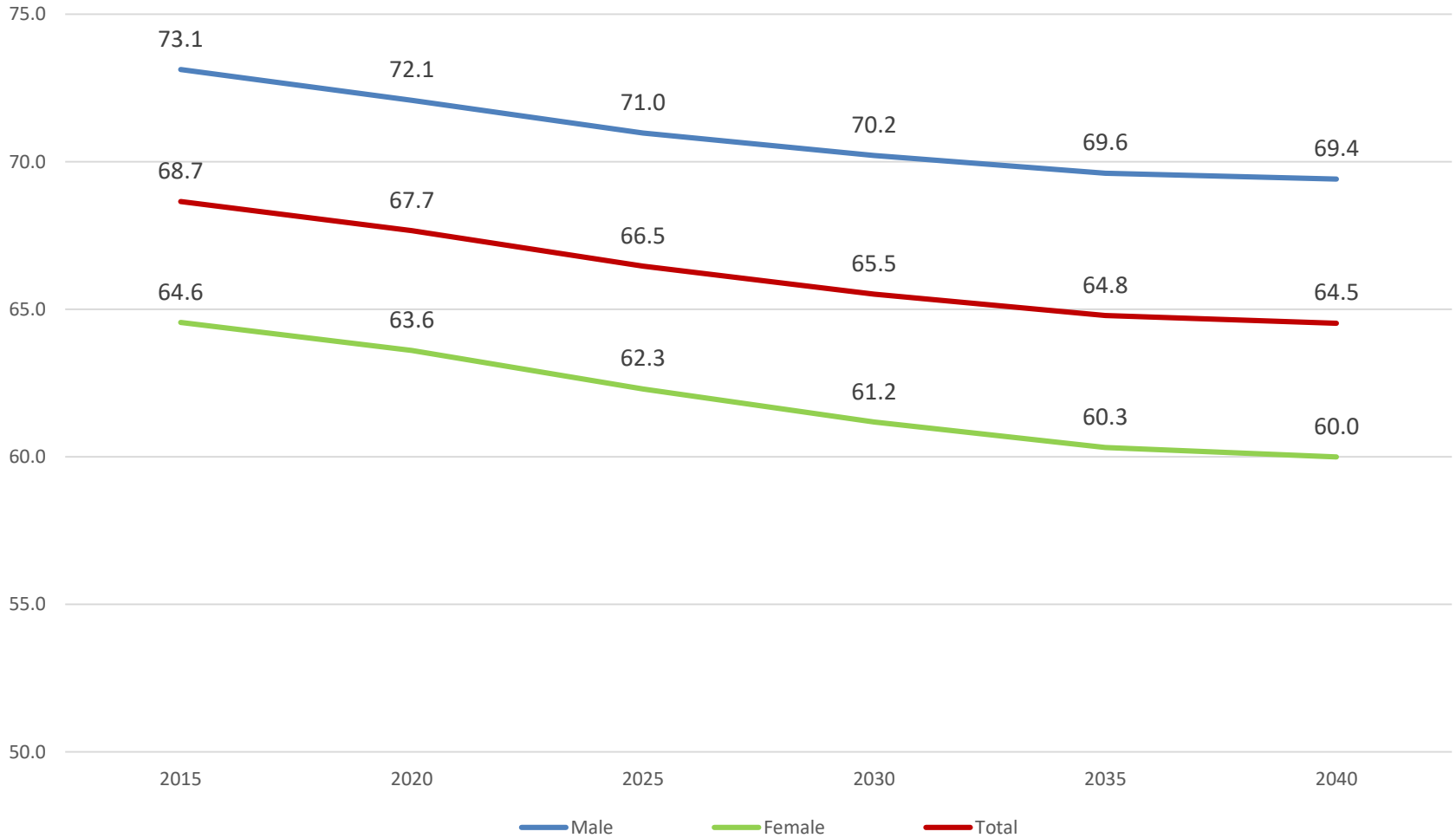
LFPR CALCULATIONS

- Three sets of LFPR's are developed
 - Based on national change
 - Based on national percent change
 - Average of the above two
- Special cases - jurisdictions with large group quarter populations, total population is substituted with household population

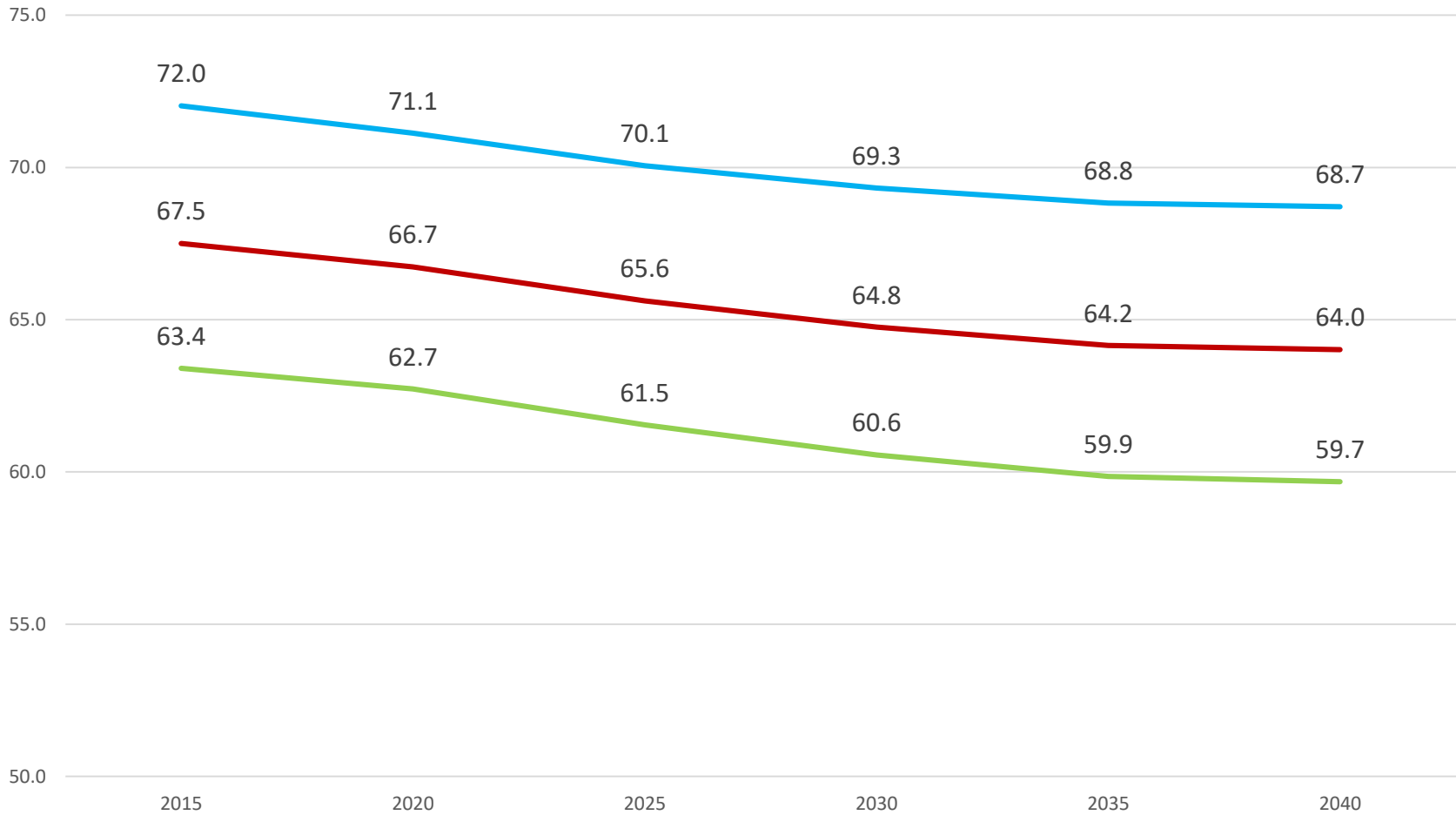
LABOR FORCE CALCULATIONS

- The projected LFPR's are applied to the projected population to derive the Labor Force for both males and females separately for different age groups.

Labor Force Participation Rates, Maryland

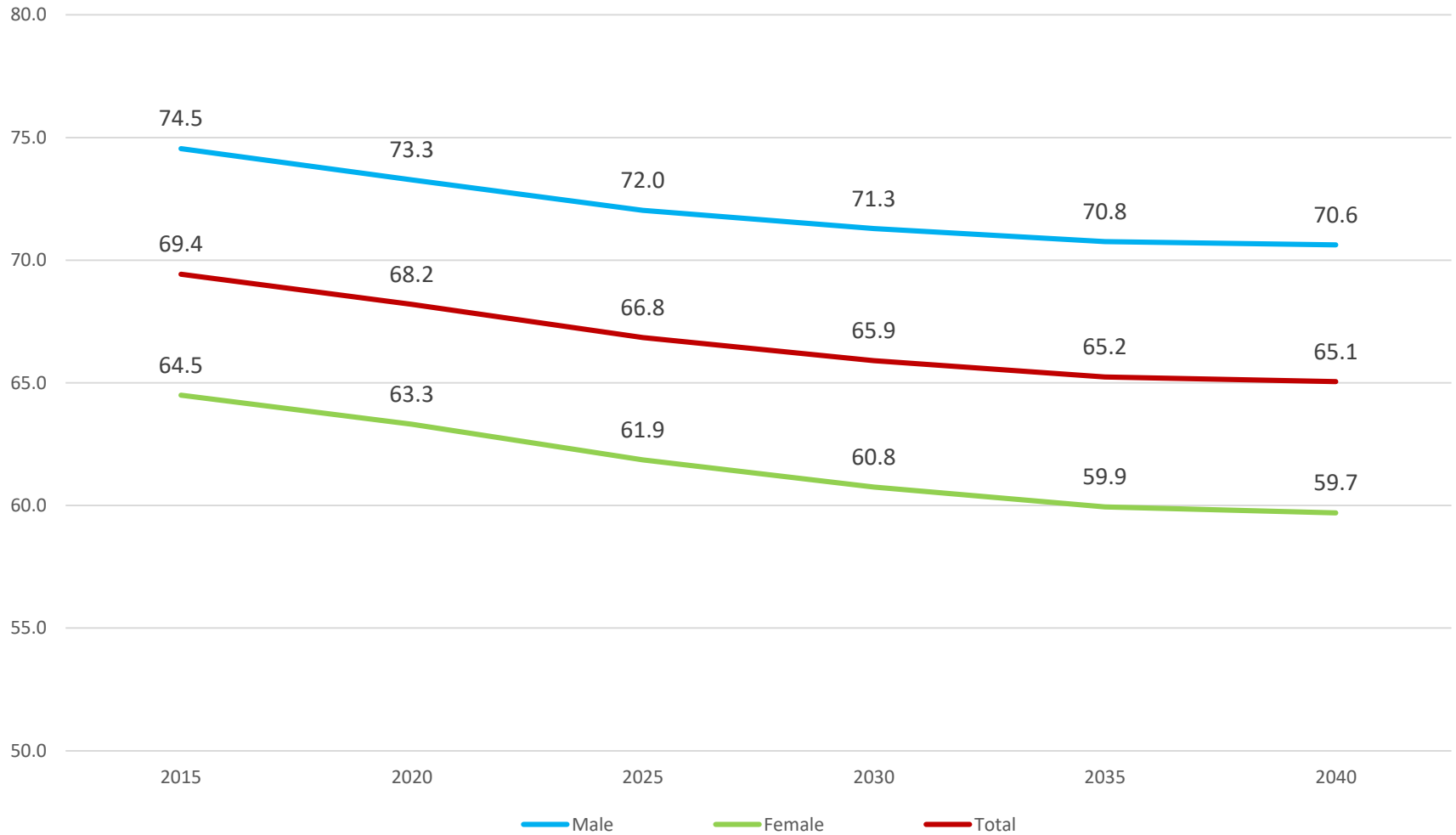


Labor Force Participation Rates, Baltimore Region

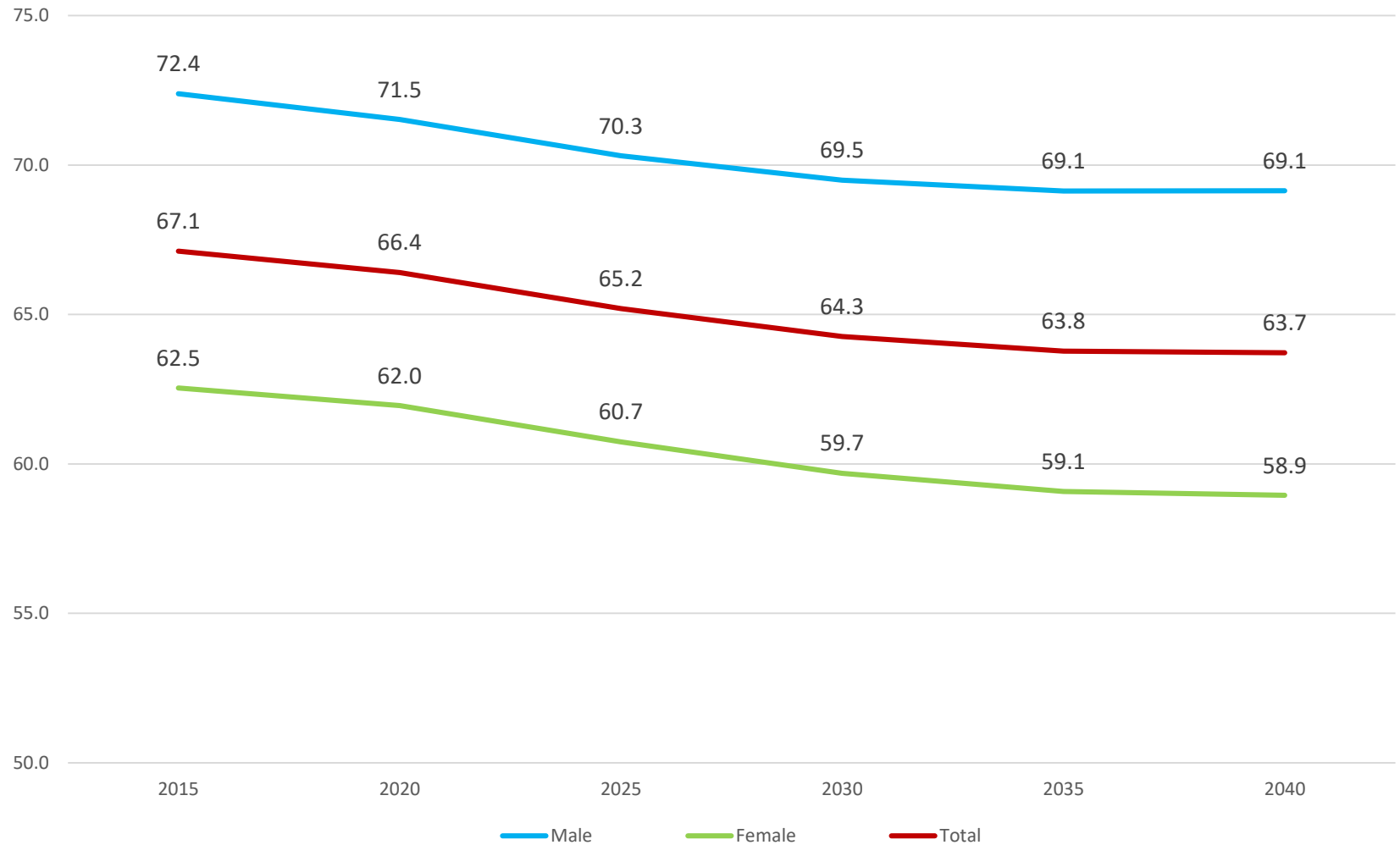


Male Female Total

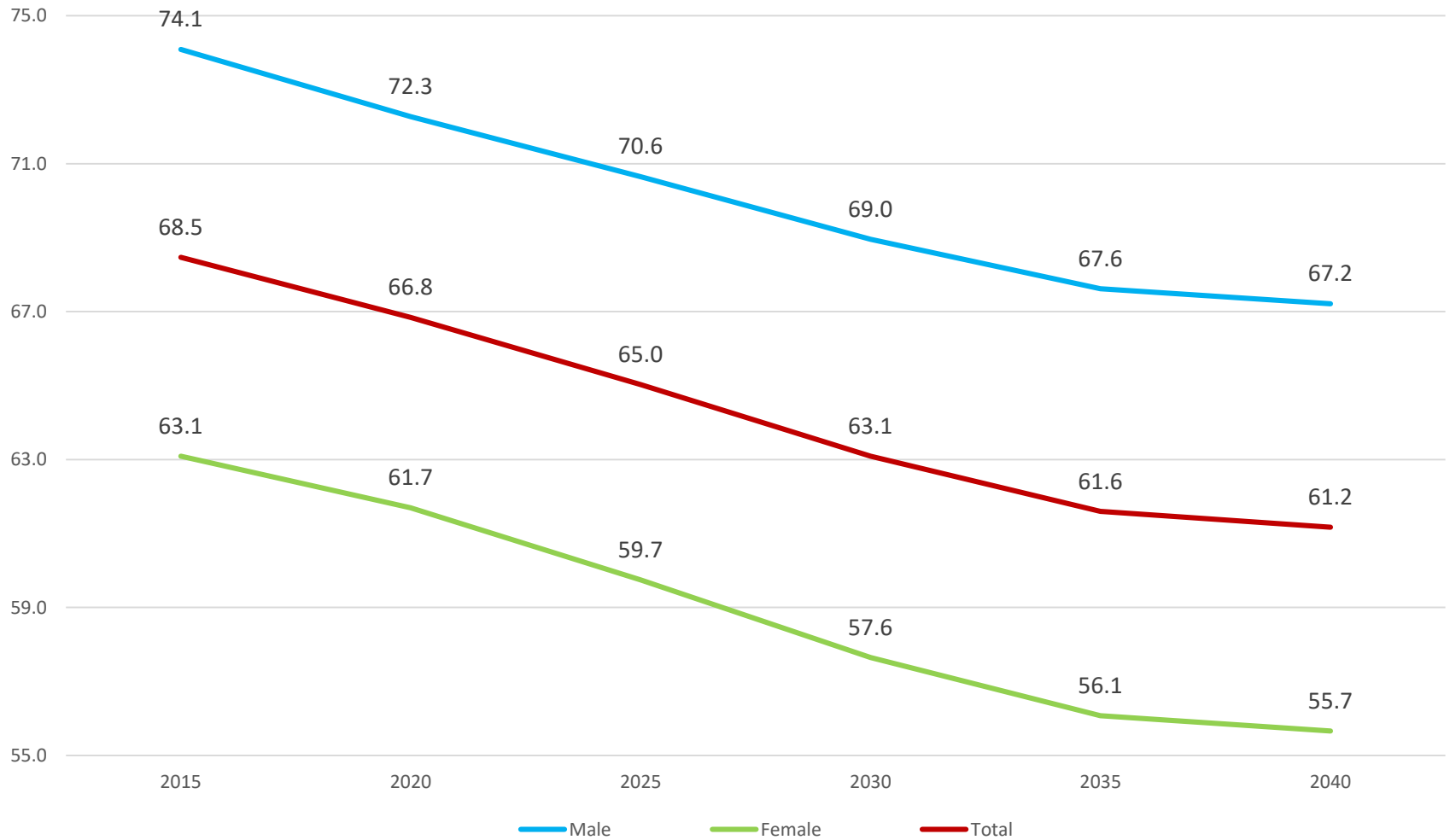
Labor Force Participation Rates, Anne Arundel County



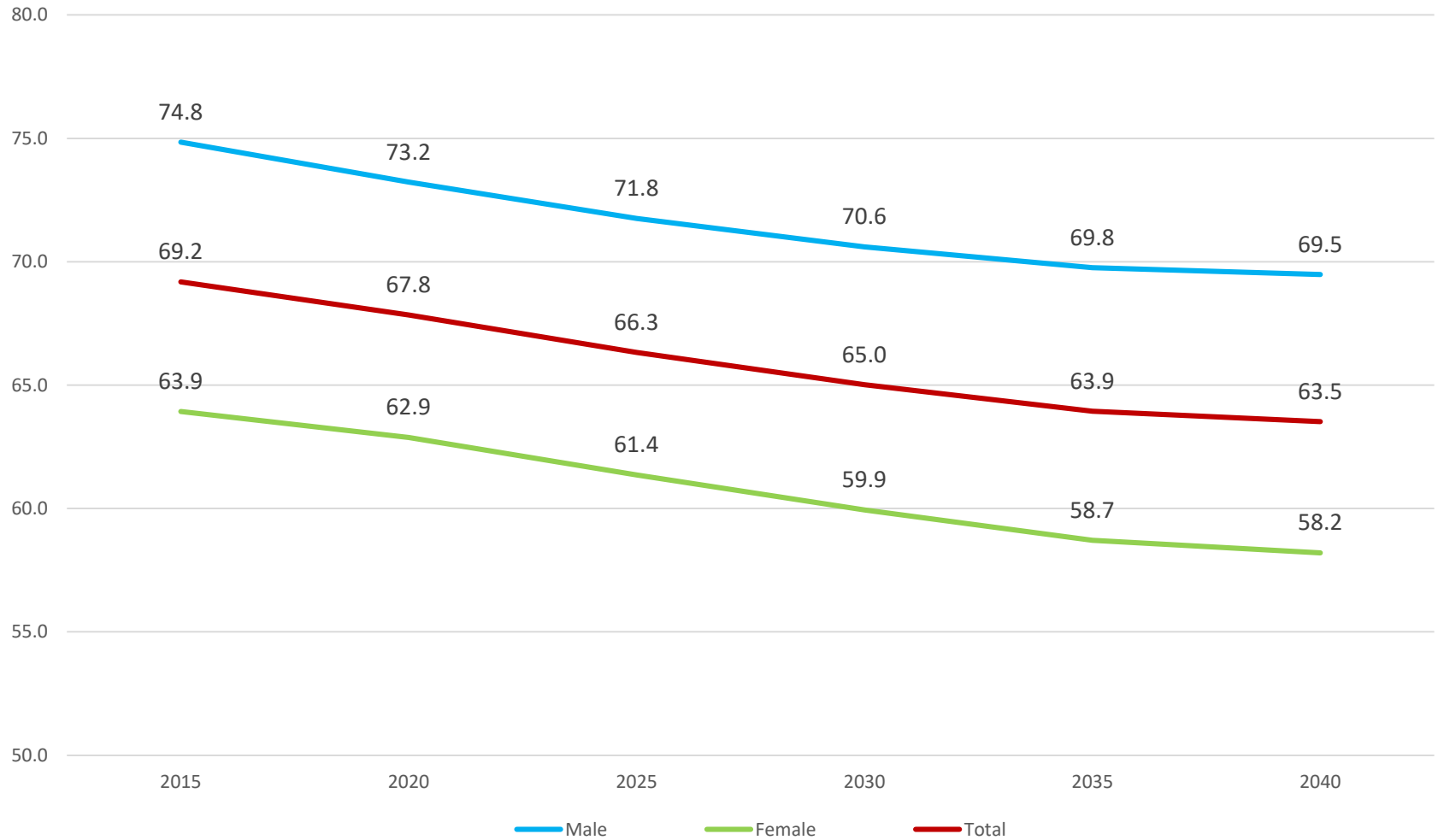
Labor Force Participation Rates, Baltimore County



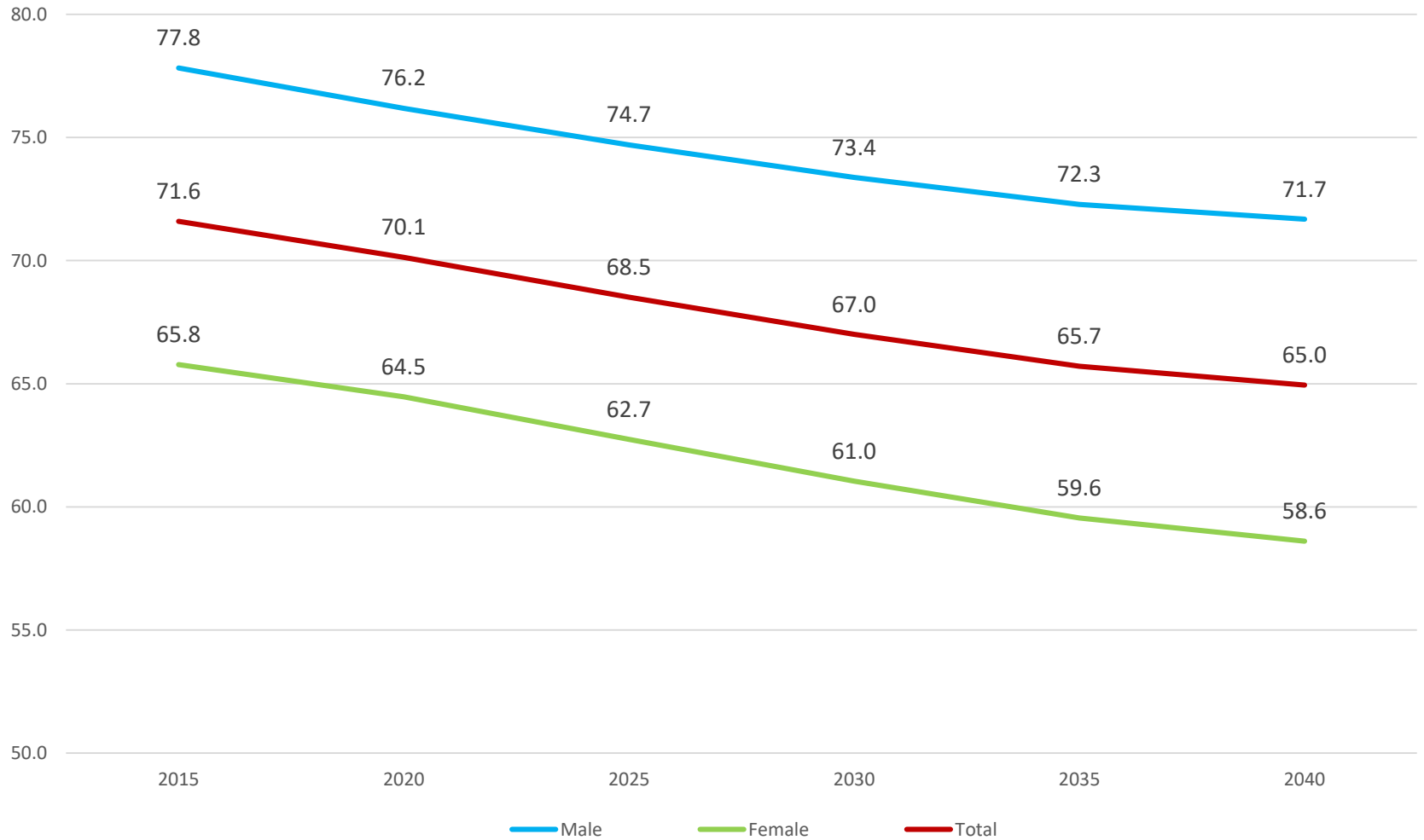
Labor Force Participation Rates, Carroll County



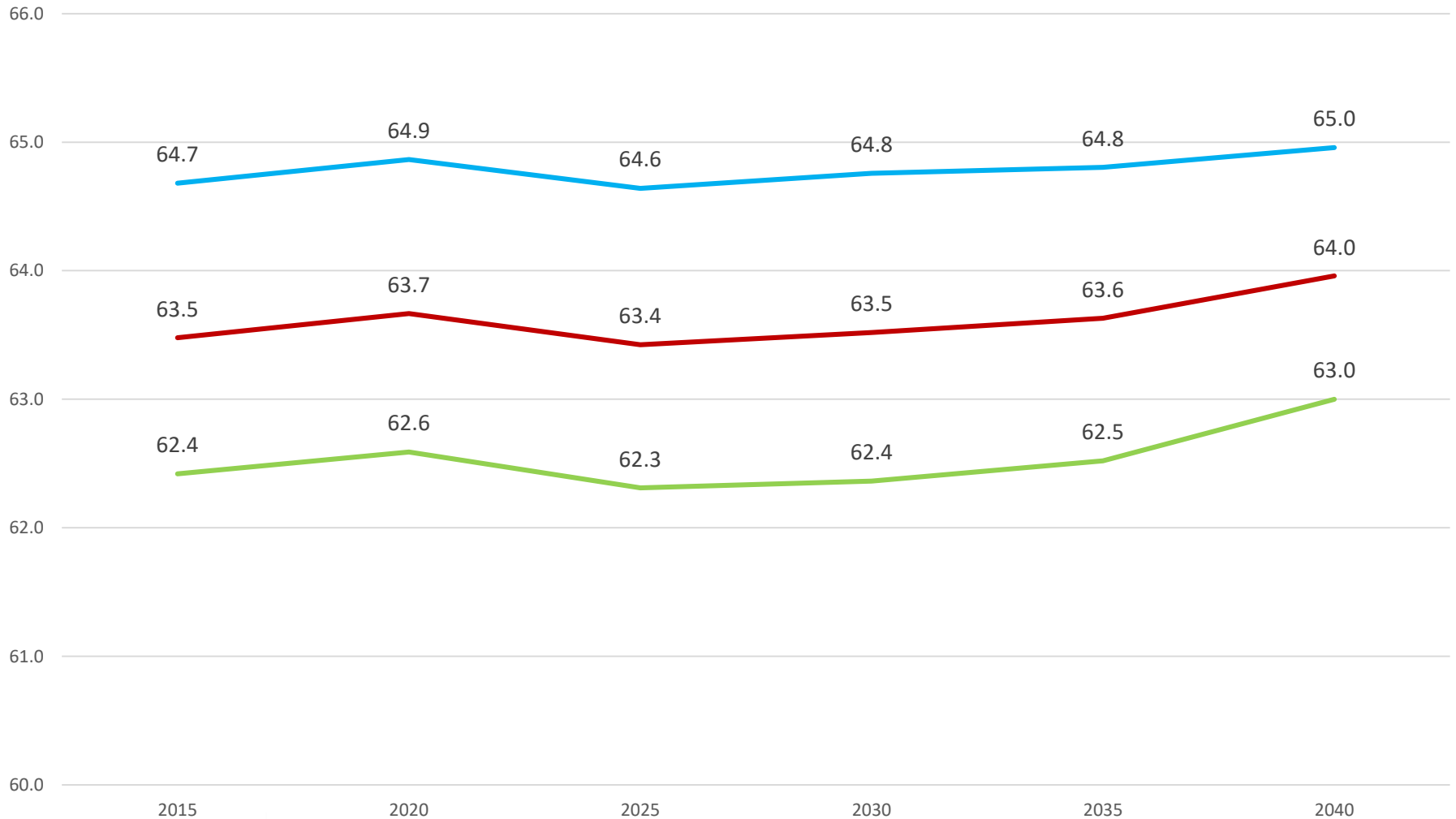
Labor Force Participation Rates, Harford County



Labor Force Participation Rates, Howard County



Labor Force Participation Rates, Baltimore City



Labor Force Participation Rates, Baltimore Region Counties

