

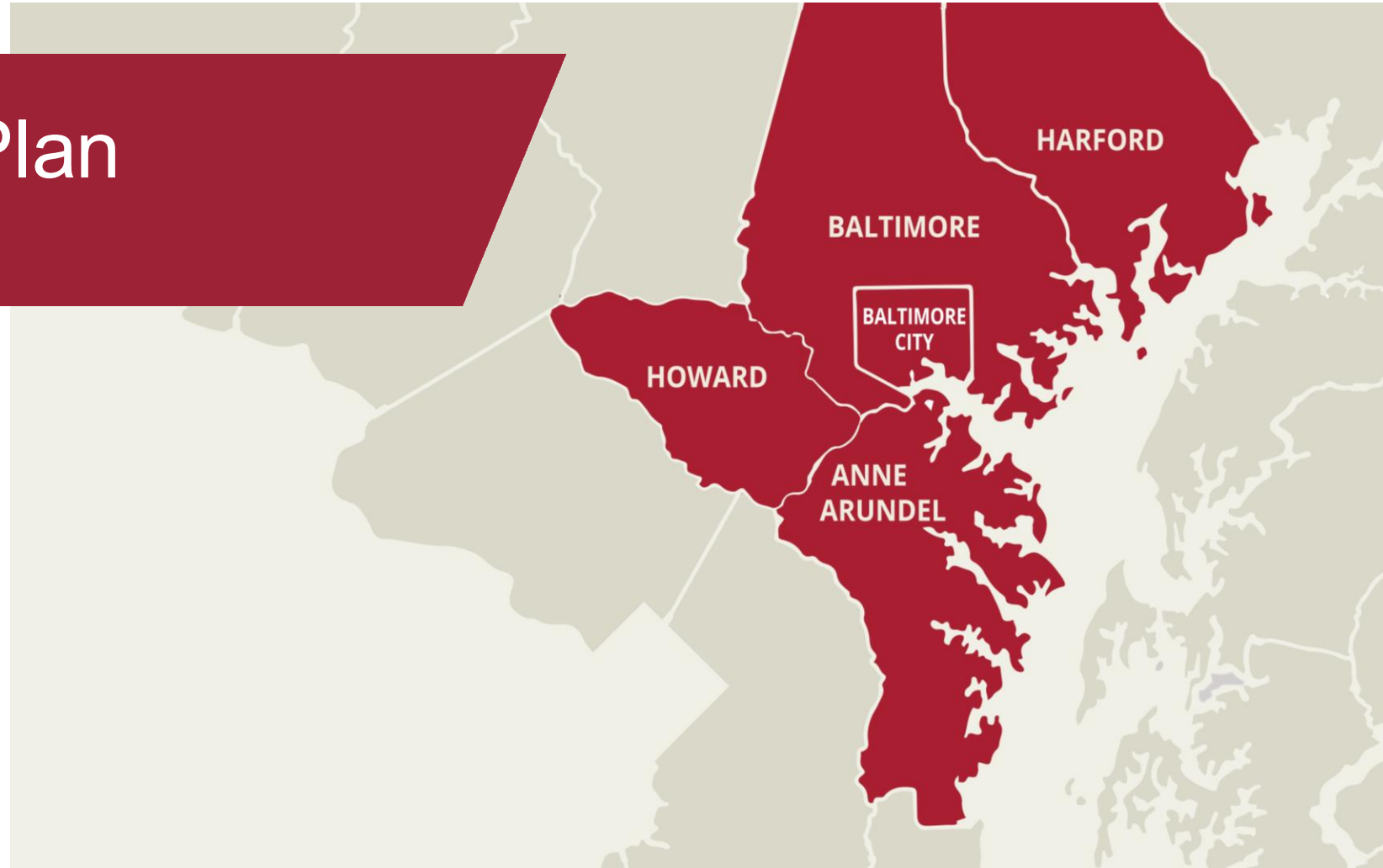


Connecting Our Future

A Regional Transit Plan for Central Maryland

Regional Transit Plan BRTC

July 11, 2025



Today's Meeting

- Update Commission on Corridor Analysis:
 - Process Review
 - Prioritizing Corridors
 - Transit Service and Infrastructure Network Segments
 - Supportive Planning and Policy Corridors
 - Transit Coverage Opportunity Corridors
- Discuss Proposed Strategy Revisions:
 - Changes, revisions, and new strategies
- Outreach Update
- Schedule Update

Process Review

Meeting 1: January 17, 2025 ✓

- Orient to the Plan
- ? Objectives and Corridor Analyses

Meeting 2: March 7, 2025 ✓

- Market and Demand Analysis
- ? Corridor Development
- ? Mode Suitability Assessments

Meeting 3: May 2, 2025 ✓

- Corridor Confirmation and Prioritization
- Mode Suitability Assessment
- ? Service Improvement Phasing

Meeting 4: July 11, 2025

- Service Improvement Phasing
- ? RTP Strategies
- ? Plan Development

Meeting 5: September 4, 2025

- **Draft Plan Document**
- ? Document Refinements

MTA's RTP Due Date: October 1, 2025

Legend

- Present Information to BRTC
- ? Seek Input from BRTC

Dates subject to change according to BRTC schedule

Corridor Confirmation and Prioritization



Confirmation and Prioritization – Categories

RTP Update will describe corridor segment needs more specifically:

Comprehensive investments to improve travel times and increase transit capacity

Transit Service and Infrastructure

Targeted actions to build transit demand and service in the long term

Transit Coverage Opportunity



Maintain Transit Performance

Ongoing efforts to address State of Good Repair and localized operational challenges

Supportive Policy and Planning

Jurisdictions have identified these areas for additional density and/or policies and programs to improve transit access

Confirmation and Prioritization – Process

Does corridor currently have high-capacity, high-quality transit?

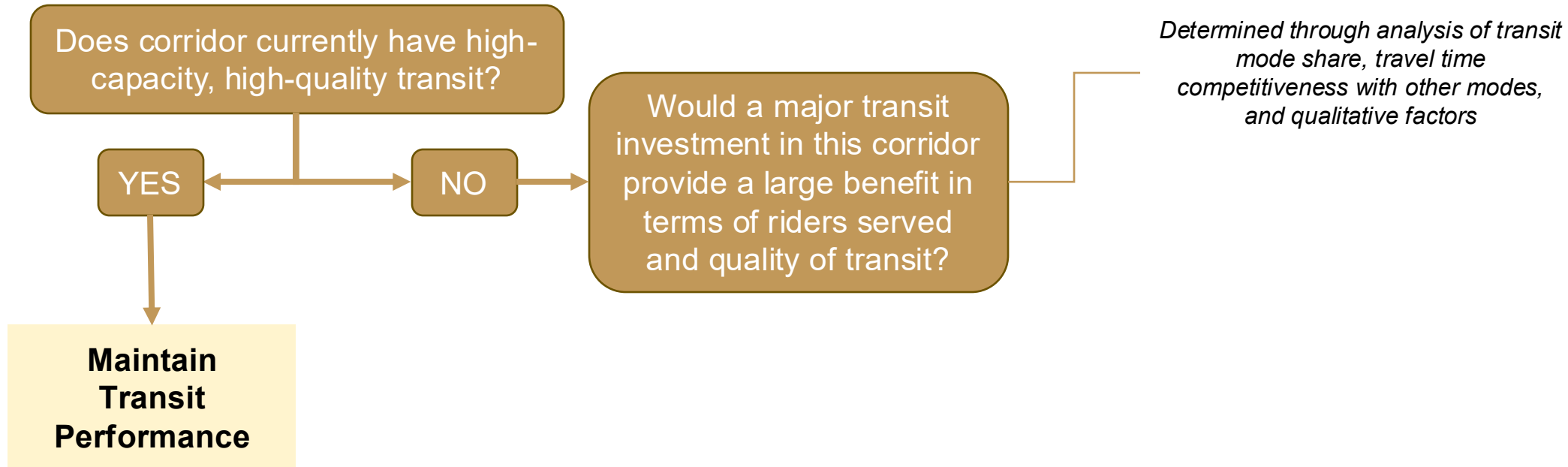
Confirmation and Prioritization – Process

Does corridor currently have high-capacity, high-quality transit?

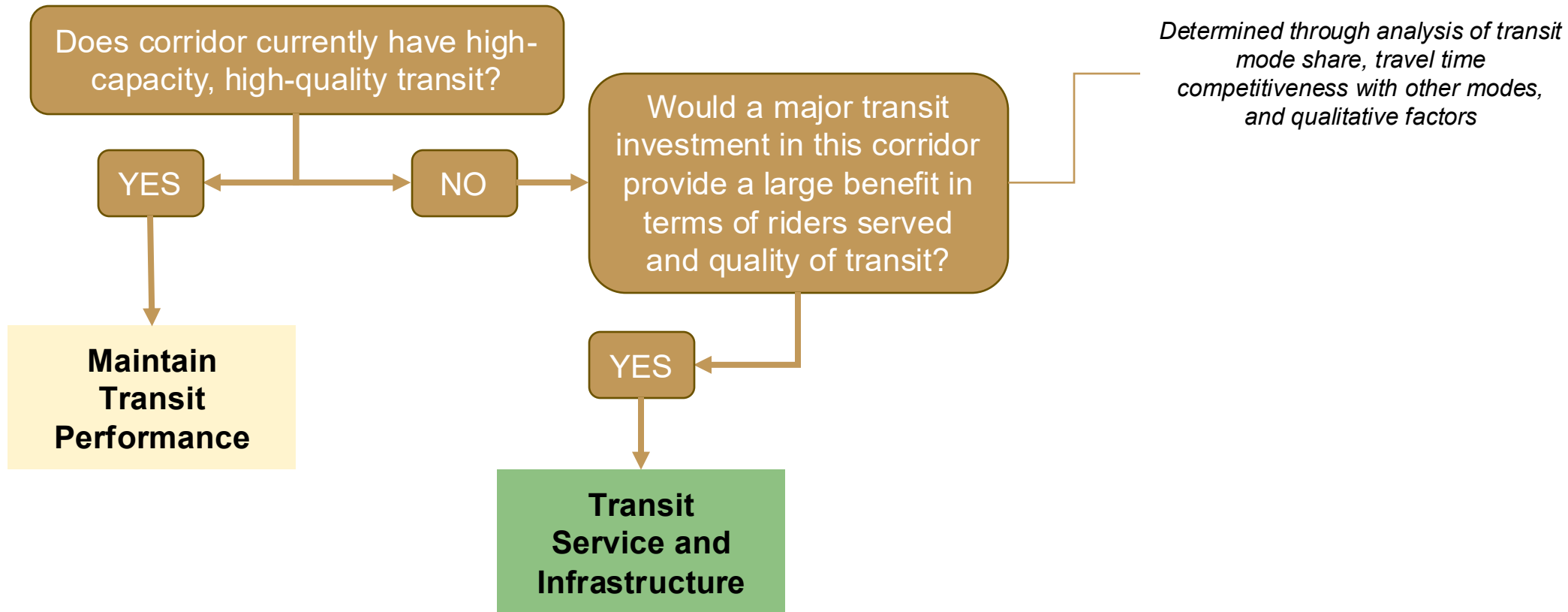
YES

**Maintain
Transit
Performance**

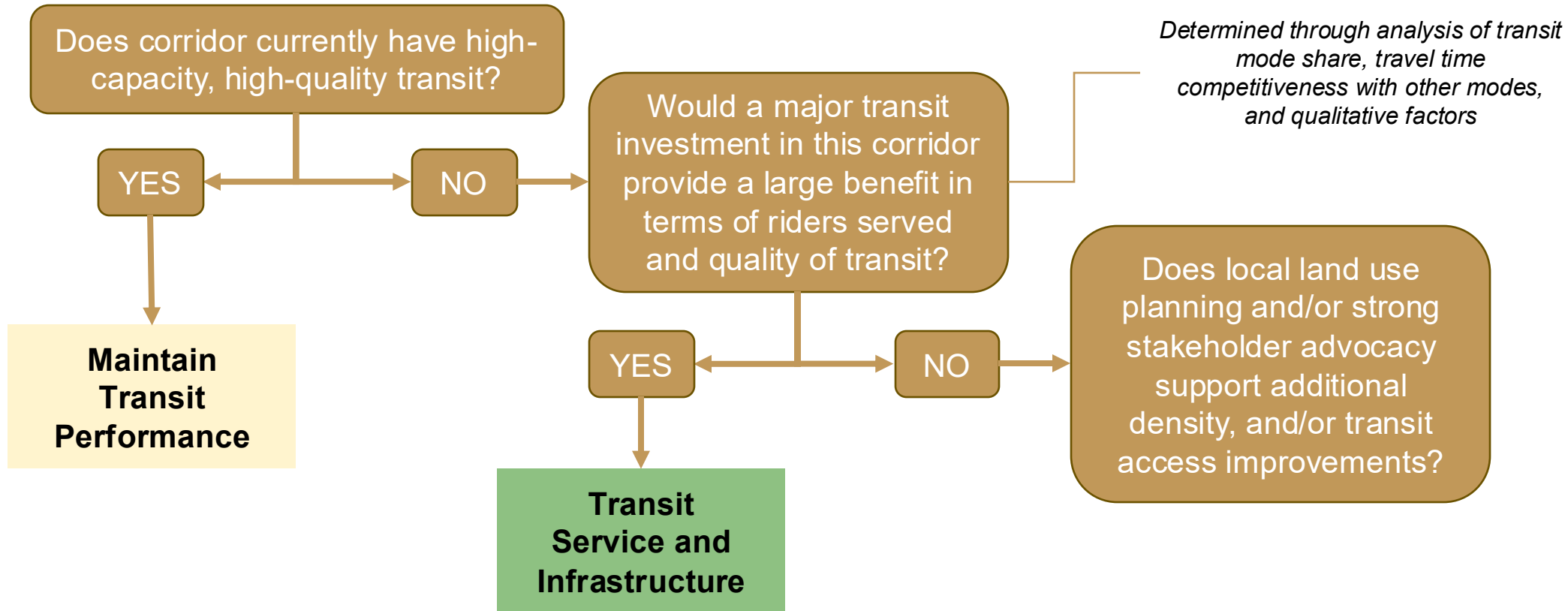
Confirmation and Prioritization – Process



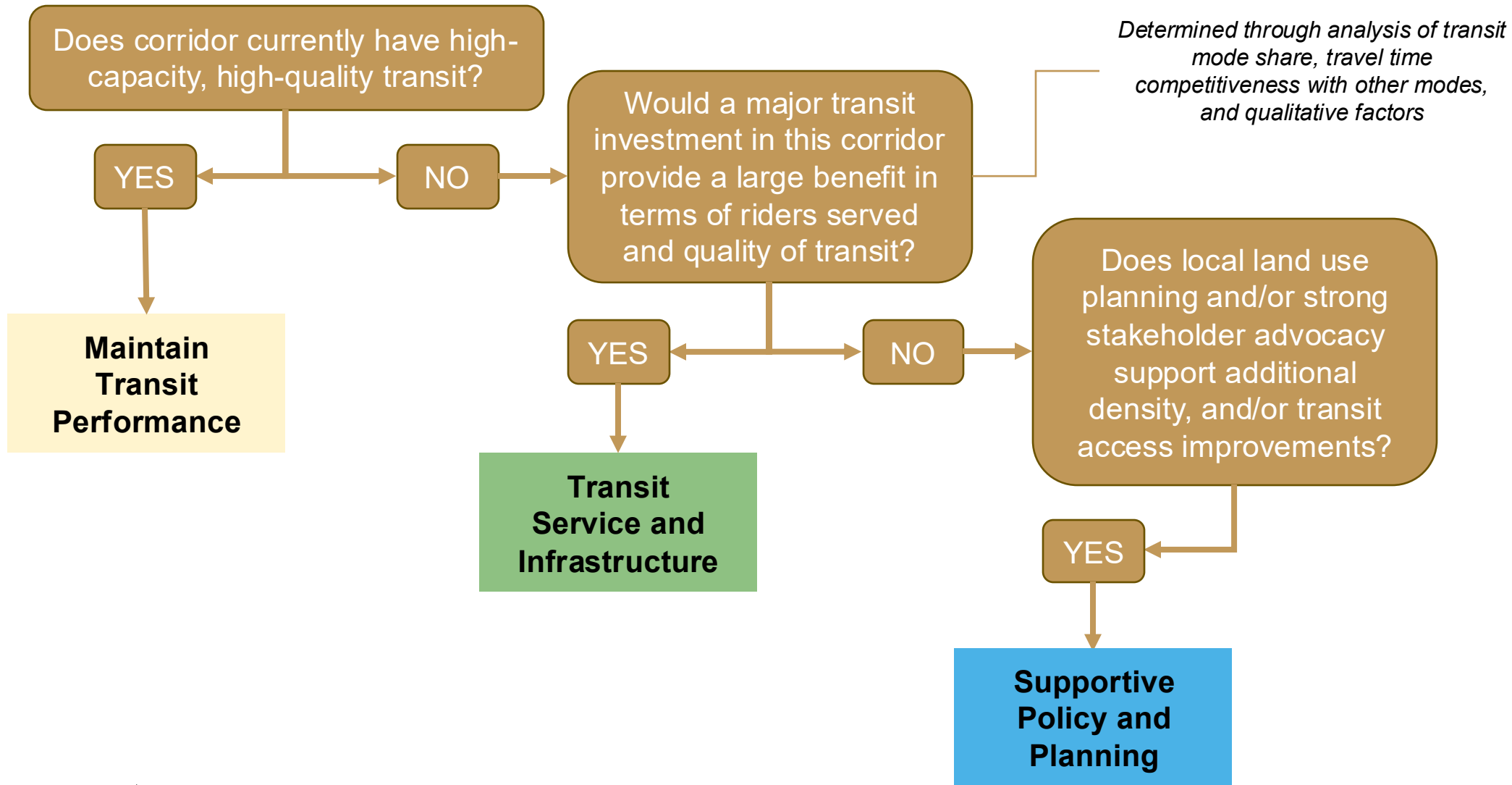
Confirmation and Prioritization – Process



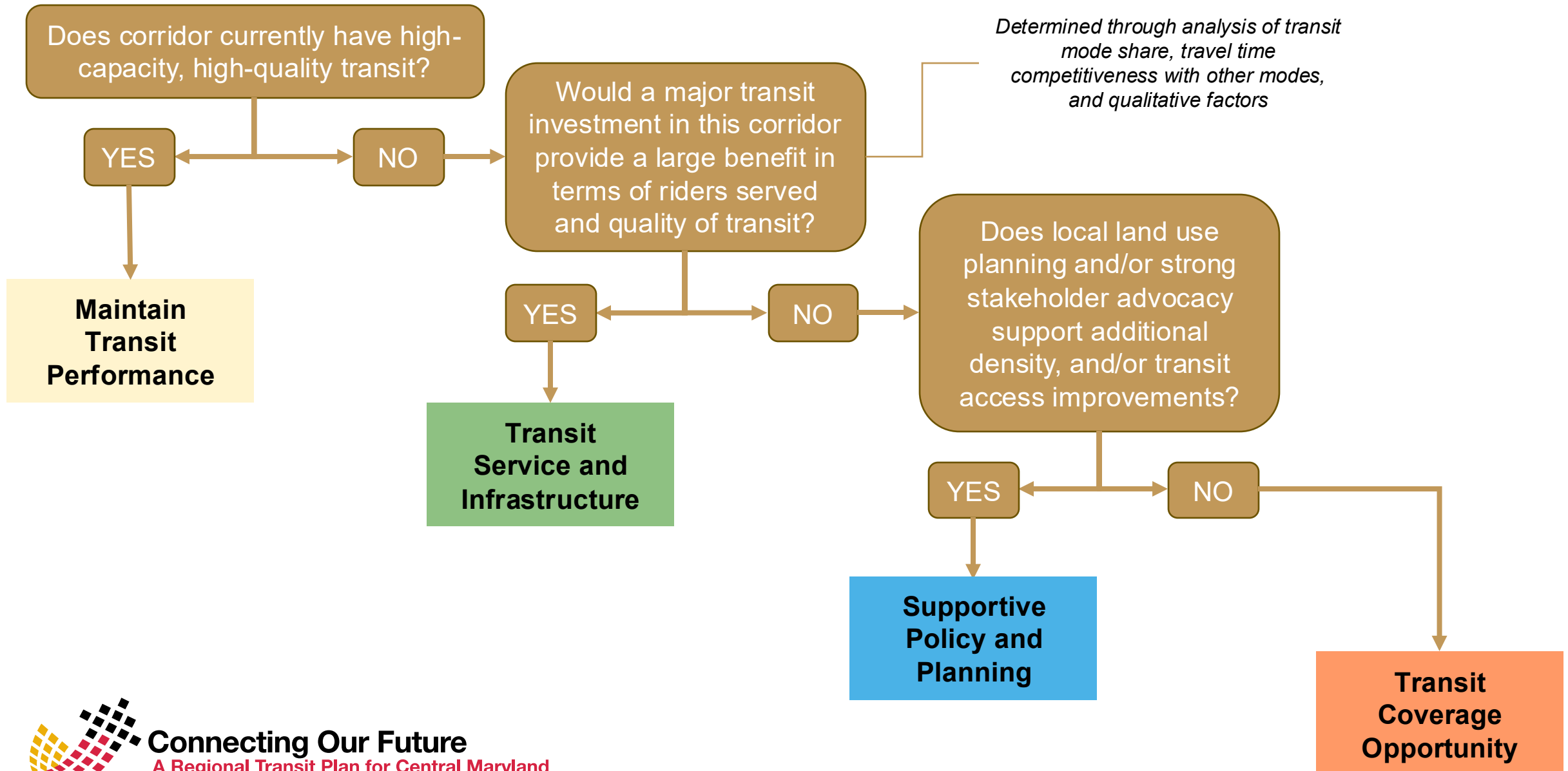
Confirmation and Prioritization – Process



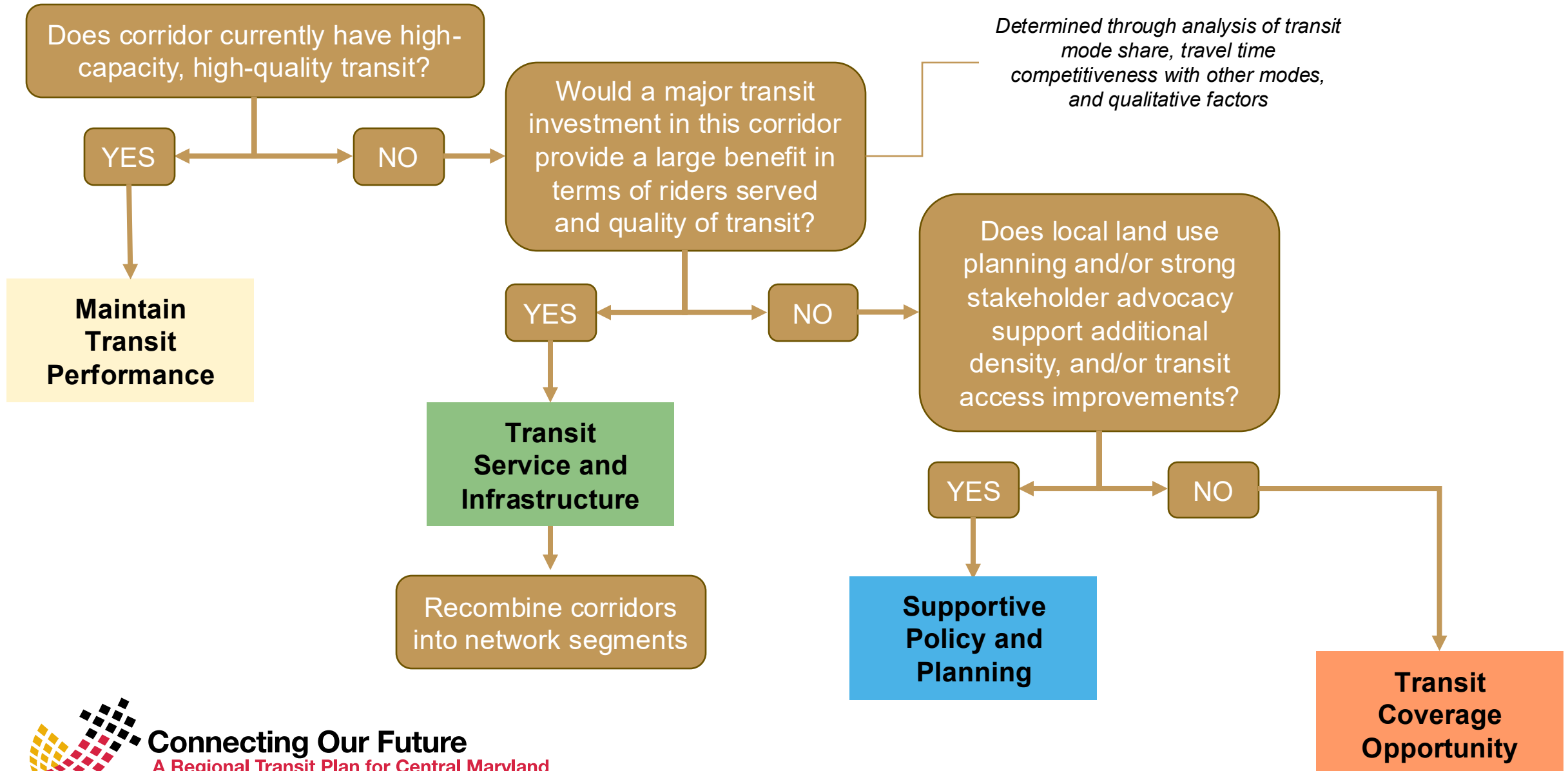
Confirmation and Prioritization – Process



Confirmation and Prioritization – Process

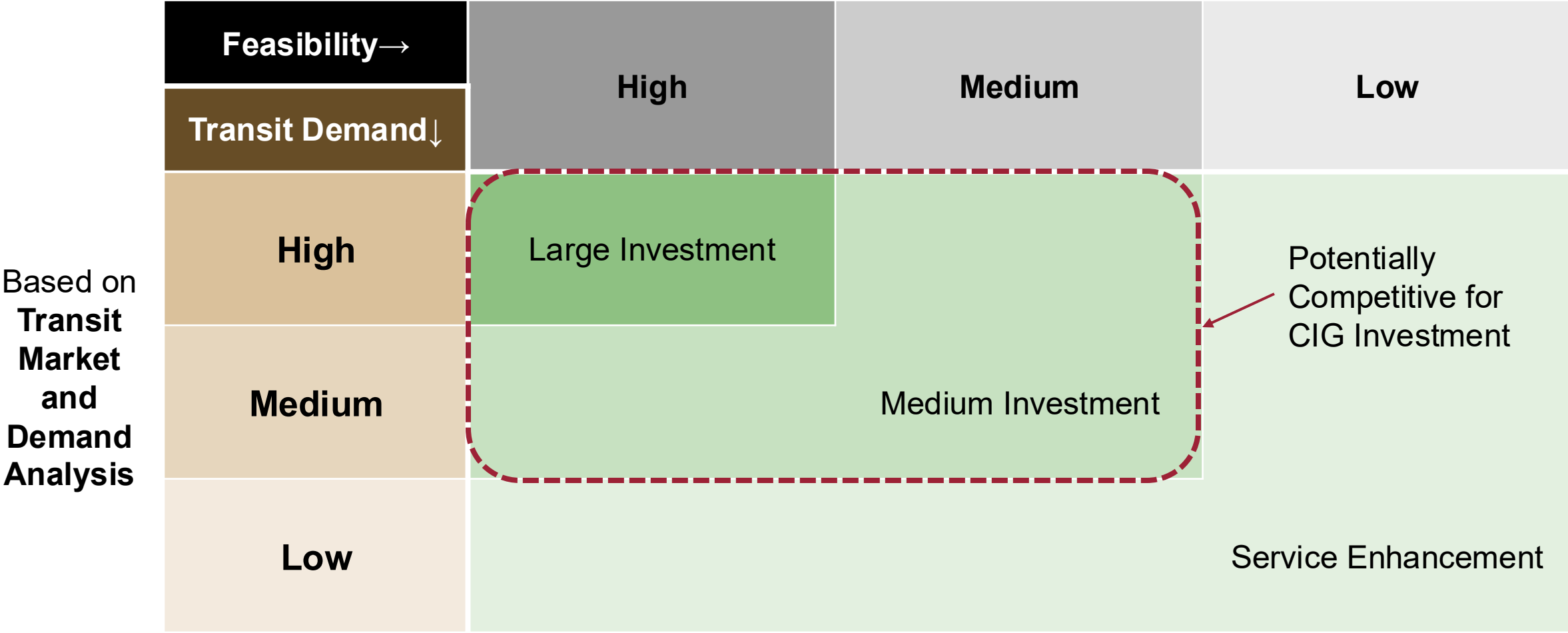


Confirmation and Prioritization – Process



Transit Service and Infrastructure Corridors

Qualitative Feasibility that considers physical constraints, transportation network impacts, CIG criteria, and local support



Transit Service and Infrastructure Network Segments

Significant Transit Investment	Service Enhancements
<i>Network Segments that would benefit from significant investment, including separated guideway where feasible, improved station infrastructure, and medium- or high-capacity service</i>	<i>Network Segments where enhanced service frequency through BMORE BUS could be supported by targeted improvements such as bus lanes, bus bulbs, and transit signal priority</i>
Red Line	Mondawmin to South Baltimore
North-South Corridor	Mondawmin to Bayview
Bayview to Essex and Sparrows Point	Rogers Ave to West Baltimore MARC
Mondawmin to Northwest Hospital	State Center to Bayview
Halethorpe to White Marsh via Downtown	Walbrook Junction to Berea
	Laurel to Halethorpe

High Priority Capital Projects



- Light Rail Modernization Program
 - Investment in new vehicles, signal systems, stations, track, and maintenance facilities to maintain and improve performance of Light Rail

Fully
Funded



- Red Line
 - Relaunched in 2023 and currently in the planning phase
 - Comprises segments included in the 2020 RTP

Funded
Through
Planning

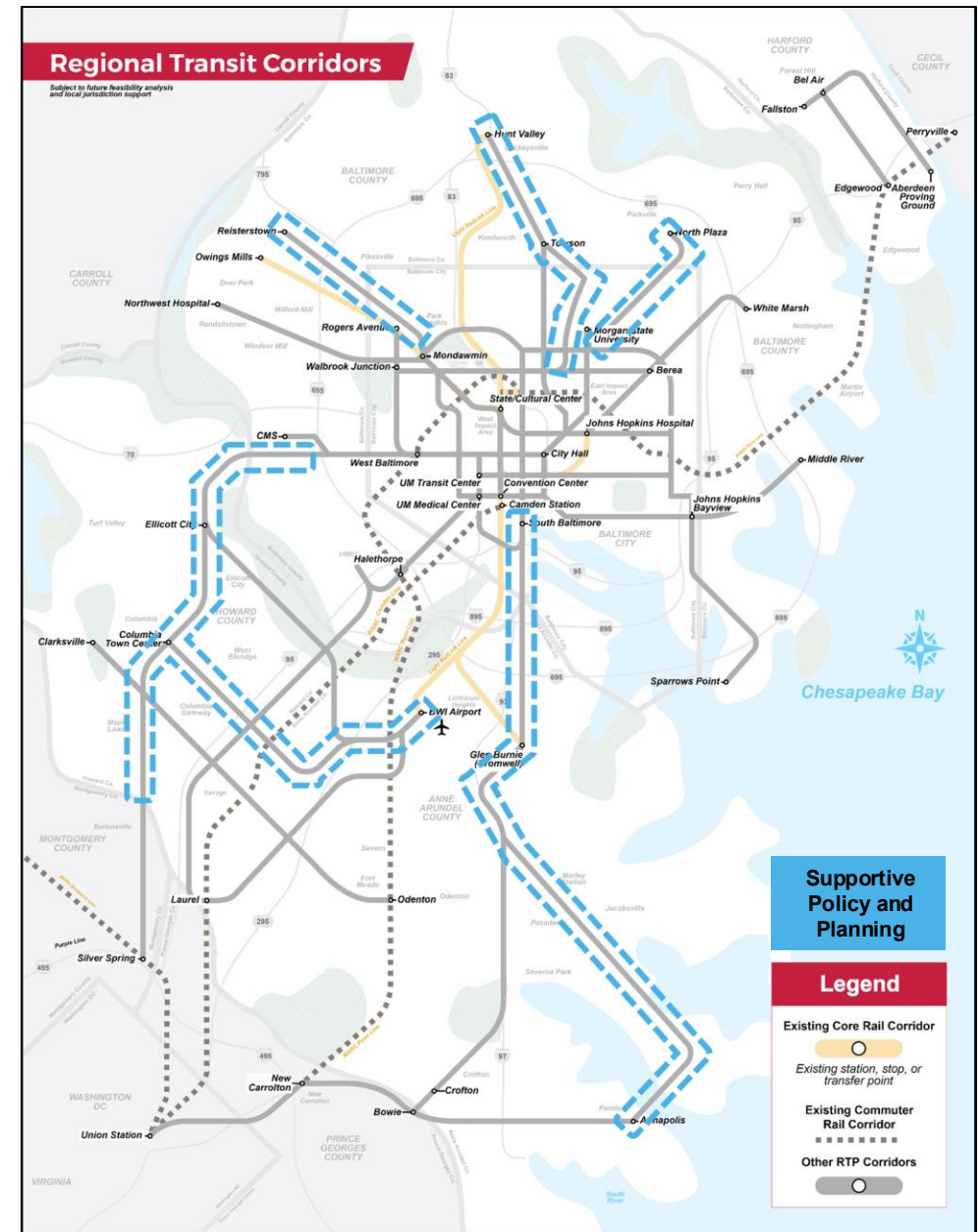


- Fifth Bus Division
 - Additional bus storage, maintenance, and support capacity
 - Would be required to implement the frequency improvements called for in BMORE BUS
 - Could also support one or more BRT fleets

Funded for
Property
Acquisition

Supportive Policy and Planning Segments

- Segments where local land use planning supports additional density and/or transit access
 - South Baltimore to Glen Burnie, Annapolis
 - Columbia to Woodlawn, Ellicott City BWI, and Silver Spring
 - Select segments connecting northern Baltimore City with Baltimore County
- Focus on supportive actions
 - Local land use plan implementation
 - Transit access infrastructure such as sidewalks, crosswalks, improved stops
 - Adjustment over time for emerging demand, through Annual Service Plan process



Transit Coverage Opportunities

- Segments with smaller current transit markets, less existing service, planned to remain lower density
 - Segments in southern and western Anne Arundel County
 - Segments in the suburban tier of Howard County
 - Segments in Harford County
- Focus on long-term actions that can develop transit demand over time
 - Adding LOTS service incrementally
 - Developing bus stop infrastructure
 - Building stakeholder relationships



RTP Strategies



Featured Strategies

Investment-Focused Strategies

- Increase number of bus shelters
- Partner with jurisdictions to make stations and stops ADA accessible
- Prioritize the rehabilitation and replacement of safety and service critical assets on schedule to maintain a State of Good Repair
- **PROPOSED:** Identify additional bus layover space, especially in downtown Baltimore

Policy-Focused Strategies

- Work with businesses, military installations, colleges/schools, and medical campuses to coordinate transit services
- Ensure consistent enforcement of bus lane and bus stop violations
- Provide real-time passenger information online, at major transit hubs, rail stations, and on transit vehicles
- Expand fare payment options for all transit providers, including paratransit
- **PROPOSED:** Transition Transit Signal Priority to a cloud-based system

Outreach



Outreach Materials – Social Media

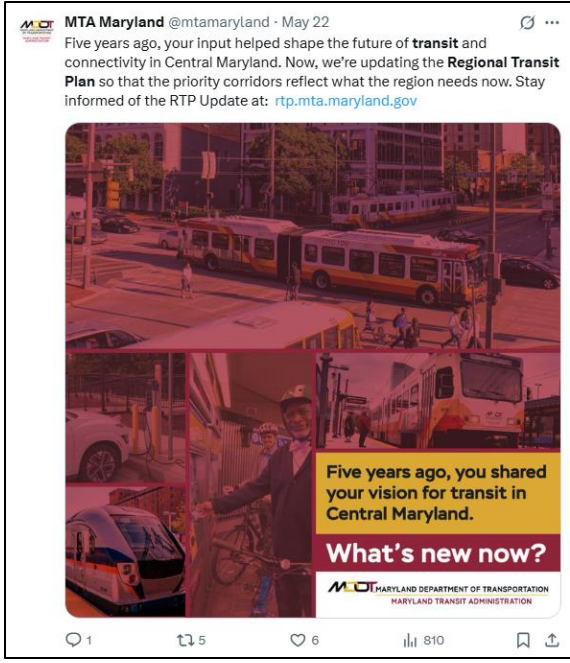
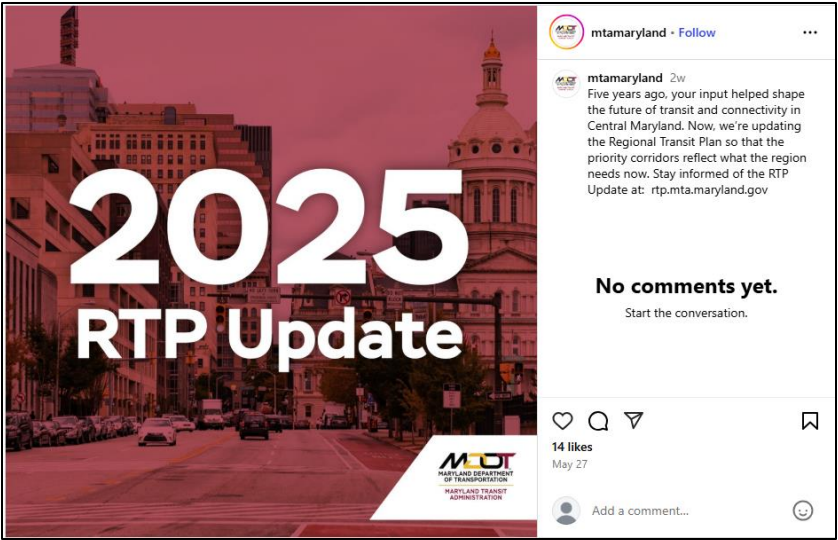
Outreach began in May

Social media

Car cards

Shelters and stations

Presence at other MTA outreach events (Red Line etc.)



Schedule and Next Steps



Schedule: Project Activities

Winter 2024-25

- Document progress on RTP strategies and corridors
- Update transit market and demand analysis



BRTC Meeting 1

Spring 2025

- Develop RTP corridors
- Mode Suitability Assessments of RTP corridors



BRTC Meeting 2 & 3

Summer 2025

- Develop service improvement phasing
- Identify updates to RTP strategies
- Consider how RTP update will balance growth and existing system modernization
- Draft RTP Update document



BRTC Meeting 4

Fall 2025

- Finalize RTP Update document
- Present finalized document to BRTC for adoption
- Publish adopted RTP Update



BRTC Meeting 5



Connecting Our Future

A Regional Transit Plan for Central Maryland

We are here