



Transportation Alternatives (TA) Program FY 2026 Applications

Baltimore Regional Transportation Board

July 22, 2025



Transportation Alternatives Program



- **MDOT SHA Call for Projects – applications were due mid-May**
- **MDOT SHA and BMC reviewed all applications and conducted site visits as needed**
 - Transportation Alternatives (TA), Recreational Trails (Rec Trails) and Safe Routes to School (SRTS) projects.
- **Baltimore region urbanized area**
 - Three applications received, totaling \$4,909,413.57 in requests.
- **Aberdeen/Bel Air South/Bel Air North urbanized area**
 - One application received, requesting \$616,000.

Baltimore Region

Safe Routes to School Coordinator Position

Anne Arundel County

Type: Non-Infrastructure

Total Cost: \$549,634.80

- Requested: \$439,707.84
- Match: \$109,926.96

Summary: Three years of funding for a SRTS Coordinator who will develop and implement education, engagement, and infrastructure projects to improve, encourage and increase the ability to safely walk or bike to school.

Purpose: Launch the County's SRTS Program in partnership with Anne Arundel Public Schools and other stakeholders with a focus on educating school staff, parents, and students about pedestrian; and bicycle safety and improving safety through a behavior and infrastructure-based approach.

Safe Routes to School Coordinator Position

Howard County

Type: Non-Infrastructure

Total Cost: \$416,904

- Requested: \$332,904
- Match: \$84,000

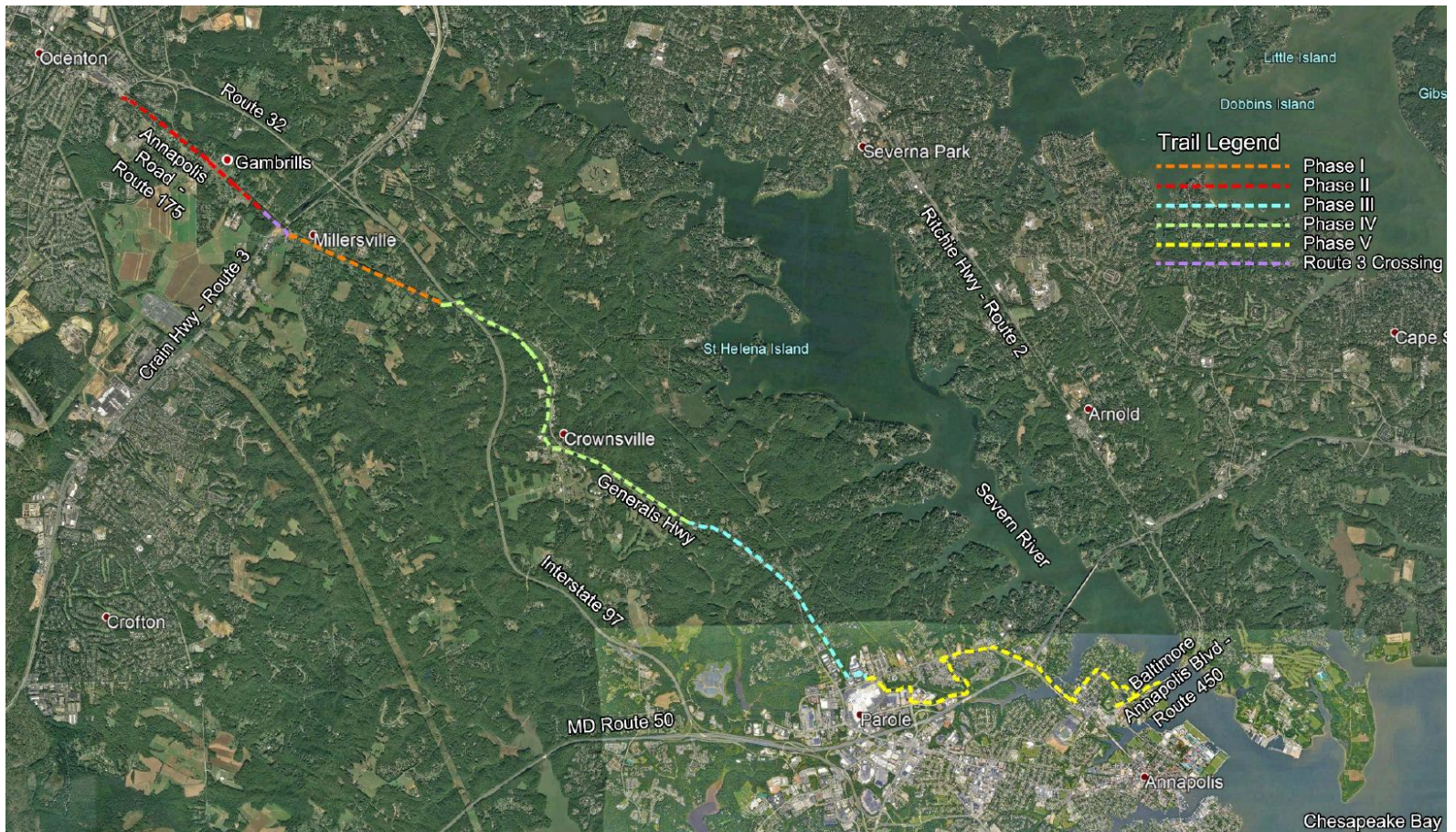
Summary: Three years of funding for a SRTS Coordinator in the Howard County Office of Transportation focused on Howard County Public Schools who will build partnerships and collaborations to improve the safety of biking and walking.

Purpose: Improve the safety of walking and biking to school, increase the number of students walking and biking to school, and decrease the number of students being transported to school by private automobile. Changing the culture from a driving default to an embrace of walking and biking will be the key path to success.

South Shore Trail Phase III

Honeysuckle Lane to Bestgate Road

Anne Arundel County



South Shore Trail Phase III

Honeysuckle Lane to Bestgate Road

Anne Arundel County

Type: Construction

Total Cost: \$5,171,000.91

- Requested: \$4,136,800.73
- Match: \$1,034,200.18

Summary: Construct a 10-foot wide, 2.36-mile, asphalt shared-use path from Honeysuckle Lane to Bestgate Road. The South Shore Trail Phase III will be for walkers, runners, and bicyclists.

Purpose: Continue building the South Shore Trail and provide pedestrians and bicyclists an additional length of trail to traverse.

Aberdeen/Bel Air South/ Bel Air North

US 40 Shared-Use Path

Aberdeen Train Station to City of Havre de Grace
Harford County



US 40 Shared-Use Path

Aberdeen Train Station to City of Havre de Grace Harford County

Type: Design

Total Cost: \$770,000

- Requested: \$616,000
- Match: \$154,000

Summary: Complete 30% design of a 10-foot wide, 5.1-mile, asphalt shared-use path from Aberdeen Train Station to Erie Street in Havre de Grace.

Purpose: Create a dedicated, separated, low-stress facility for cyclists and pedestrians that connects key destinations between the Aberdeen Train Station and Erie Street in Havre de Grace. This corridor, a busy four-lane divided highway with over 26,000 vehicles daily and speed limits ranging from 30 to 55 miles per hour, currently lacks adequate, safe infrastructure for non-motorized travel.

Page 10 of 10

410-732-0500 x1008 | cmingus@baltometro.org | www.baltometro.org

