



---

# PUBLIC INVOLVEMENT REPORT

MARCH 25, 2025





# Your Region. Your Voice.

*How We Engage the Community*

NEW!

# BMC Engagement Hub



## Baltimore Metropolitan Council (BMC)

Connect with the BMC and BRTB to help build a better Baltimore region. Check out the tabs below to get project details attend community meetings and share your opinions on key issues.

 [yourregionyourvoice.org](https://yourregionyourvoice.org)



[yourregionyourvoice.org](https://yourregionyourvoice.org)

# ONLINE ENGAGEMENT

February 2025



**2,335**  
VISITORS



**45**  
PARTICIPANTS



**52**  
COMMENTS



**66**  
SUBSCRIBERS



**9.3K+**  
EMAILS SENT

**100+**  
TEXTS SENT



**77%**  
EMAIL OPEN RATE





*July 2025 - June 2027*

# ***Transportation Planning Budget***

***February 5 -  
March 9!***

**[yourregionyourvoice.org/BRTBbudget](https://yourregionyourvoice.org/BRTBbudget)**



# OUTREACH & ENGAGEMENT

Transportation  
*Planning Budget*



[yourregionyourvoice.org/BRTBbudget](http://yourregionyourvoice.org/BRTBbudget)



**894**  
VISITORS



**27**  
PARTICIPANTS



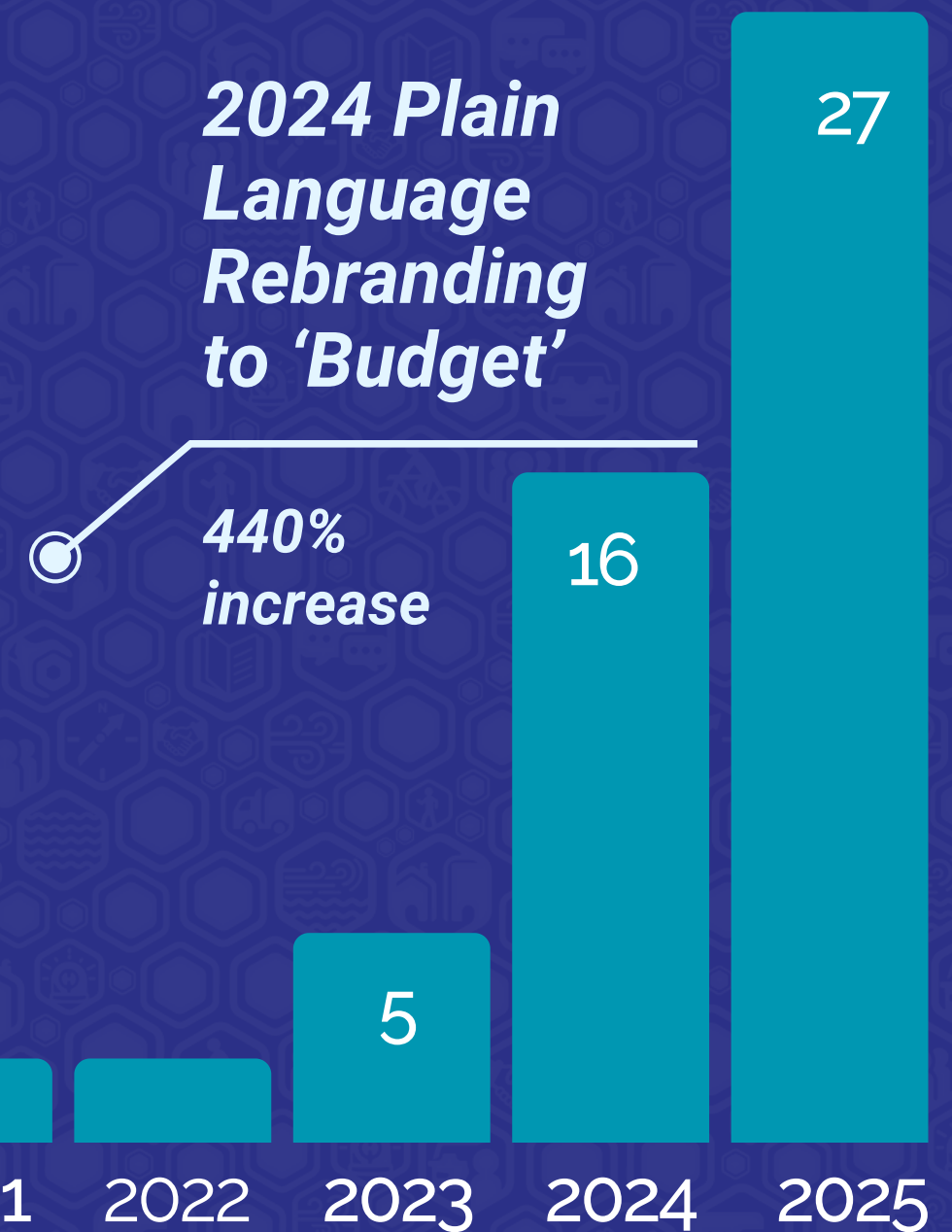
**26**  
COMMENTS



**30**  
SUBSCRIBERS



**1,841**  
EMAILS SENT



Participation  
over the years



# WHAT DID WE HEAR?

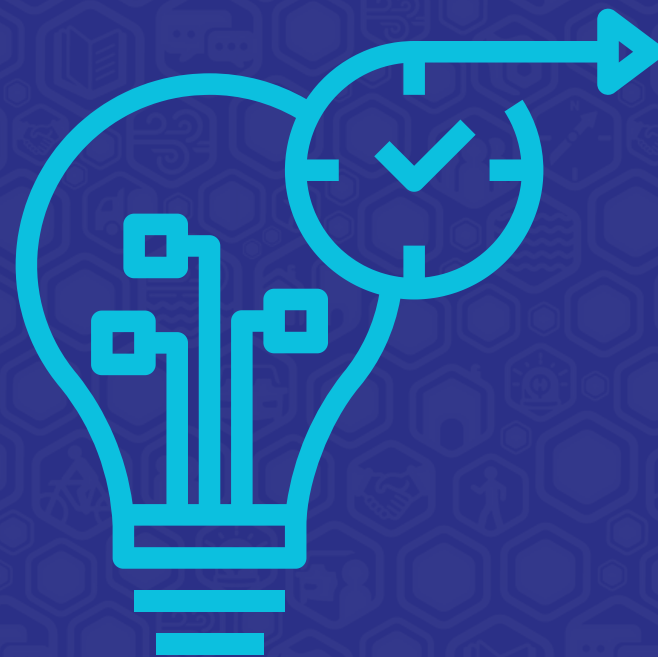
*Transportation  
Planning Budget*



[yourregionyourvoice.org/BRTBbudget](http://yourregionyourvoice.org/BRTBbudget)

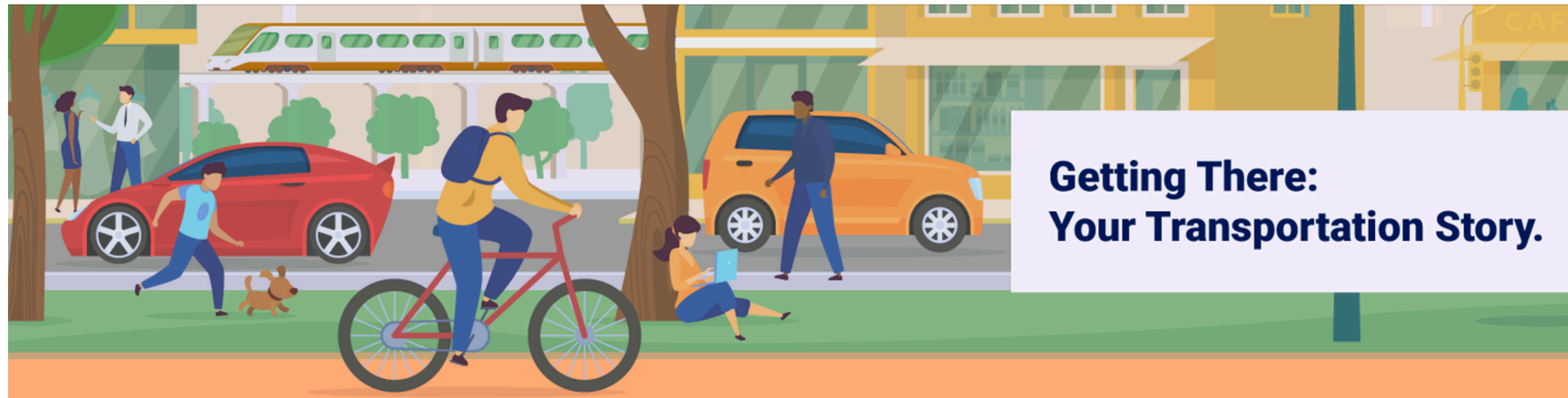
## COMMENTS : Budget Priorities

- Fund more sidewalks, bike lanes, and public transit.
- Spend less on consultants and make budgets clearer.
- Support transit projects like the Red Line instead of expanding highways.



## IDEAS : Future Planning Activities

- Use the same time standard to measure transit and driving accessibility.
- Focus more on building projects instead of just planning.
- Be transparent about how money is spent and rely less on consultants.



Comments welcome  
through April 4

No matter how you travel—driving, biking, walking, or taking transit—your experience matters. Tell us what’s working, what’s not, and what changes would make getting around easier.

## Take Our 10-Minute Survey

 **Win a \$100 Gift Card** – Complete the survey for a chance to win one of ten \$100 gift cards (18+).

 **Join a Paid Focus Group** – Provide your contact info at the end of the survey to be considered.

[yourregionyourvoice.org/gettingthere](https://yourregionyourvoice.org/gettingthere)





# HELP DESIGN THE CHERRY HILL TRAIL

We're designing a 1.7-mile trail in Cherry Hill, part of the Patapsco Regional Greenway

- What do you think of the proposed location?
- Are there any challenges we should know about?
- How can we make the trail beneficial for everyone?

Join the community meeting! Monday, March 24

Enoch Pratt Free Library – Cherry Hill Branch (606 Cherry Hill Rd, Baltimore, MD 21225)

Take our survey by April 14!

[yourregionyourvoice.org/CherryHillPRG](https://yourregionyourvoice.org/CherryHillPRG)

PATAPSCO REGIONAL GREENWAY CHERRY HILL  
BMC BRTB  
Community Meeting - Monday, March 24, 5-6:30 p.m.  
Enoch Pratt Public Library, Cherry Hill Branch  
(606 Cherry Hill Rd, Baltimore, MD 21225)  
Share your thoughts by April 14 at  
[Publicinput.com/CherryHillPRG](https://Publicinput.com/CherryHillPRG)

Scan me



# Join the Transportation CORE

*We Need Your Voice!*

- Be a voice for your community in regional transportation planning
- Share feedback through online surveys & virtual meetings
- Help shape projects, plans, and outreach efforts

Applications now being accepted from Annapolis, Anne Arundel, Carroll, Harford, Howard, and Queen Anne's County

 Apply today!

[yourregionyourvoice.org/coreapp](https://yourregionyourvoice.org/coreapp)

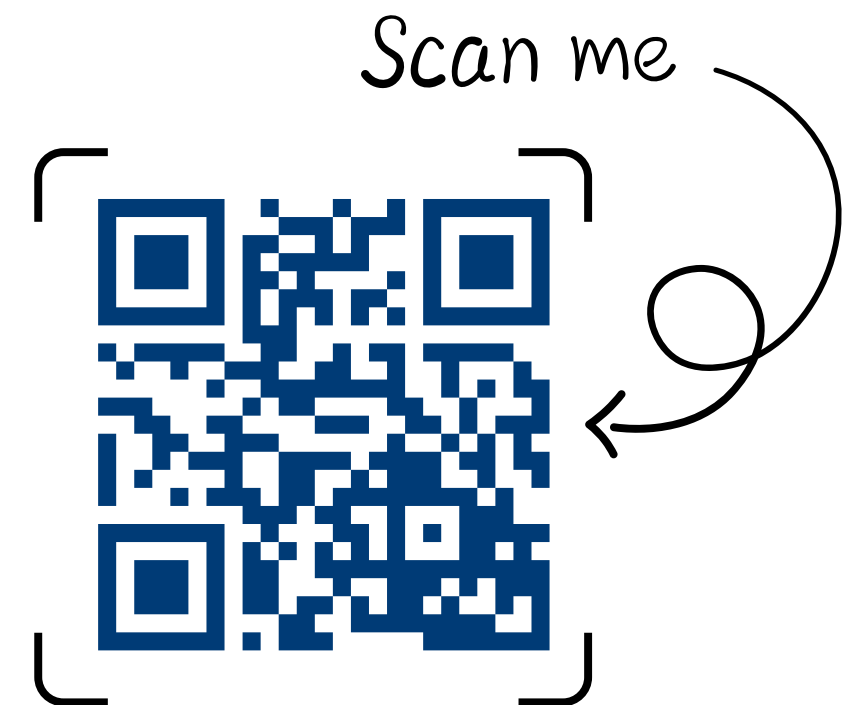


# **Bike to Work Week – May 12-18**

Celebrate biking as an affordable, healthy, and eco-friendly way to travel

- Join live pit-stops & Bike to Work Day on May 16
- Get a free t-shirt & giveaways at 40+ locations
- Registration opens April 1

[Sign up at BikeToWorkMD.com](http://BikeToWorkMD.com)





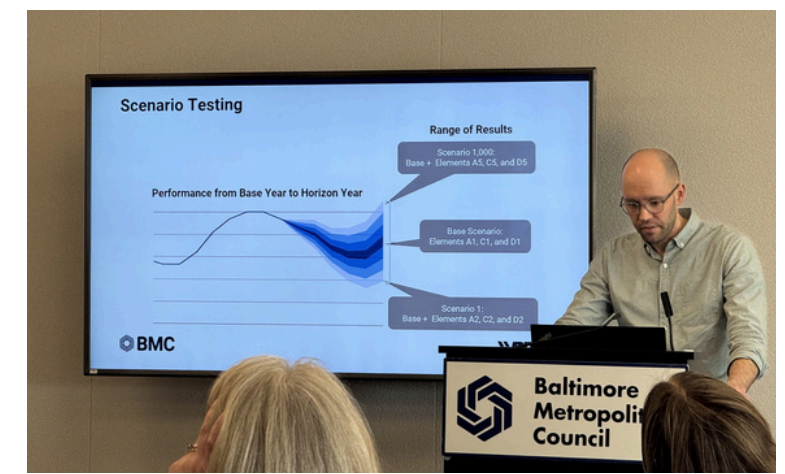
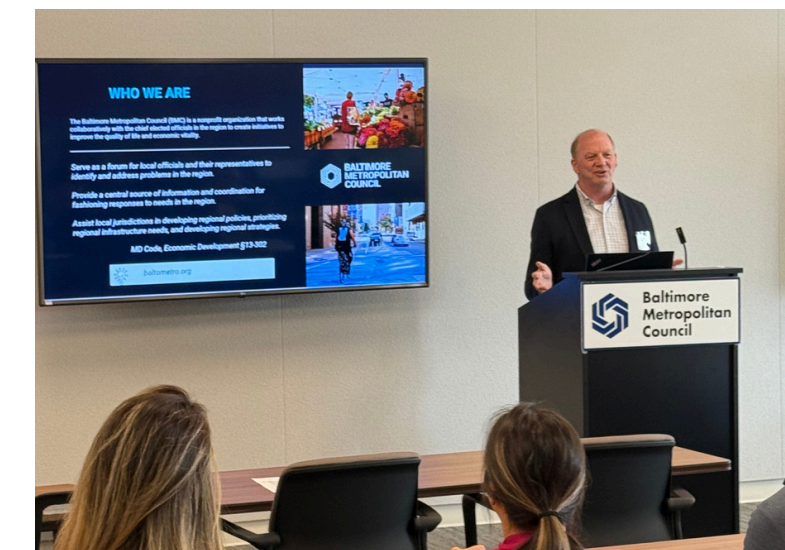
# Baltimore Region Transportation Planning **SHOWCASE WITH CAPSITE** | March 13

Thanks to all who participated and CAPSITE for collaborating on this exciting event — we're excited for future collaborations!

## 40 PARTICIPANTS!

*Our team shared insights on regional initiatives such as travel demand modeling, data dashboards, scenario planning, safety plans, emergency response coordination, and community engagement.*

*Afterward, CAPSITE hosted a happy hour at Rye Street Tavern where we enjoyed connecting.*





# CONNECTING AT COMMISSIONS AND PROFESSIONAL MEETINGS

*Community  
Outreach!*



- Southwest Partnership: Vibrant and Walkable Streets Committee
- HoCo Multimodal Transportation Board
- AA Co Transportation Commission
- AA Co Commission on Disability Issues

# CONNECTING IN THE COMMUNITY



- Cherry Hill library
- AA Safe Routes to Transit - North County Public Meeting
- Transit Choices meeting
- MD Strategic Highway Safety Plan Public Meeting



*More outreach planned for Spring! ☀️*  
*Let us know of upcoming community events*

# How to get involved



Visit [yourregionyourvoice.org](http://yourregionyourvoice.org)

Join our mailing lists

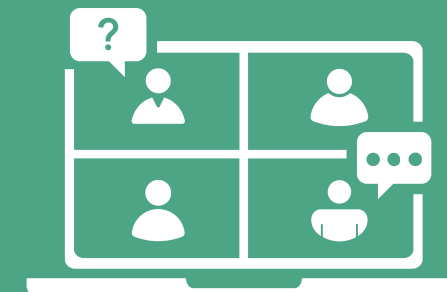


SUBSCRIBE



Take a survey or share a comment  
by phone, text, email or online

Come to a meeting



[yourregionyourvoice.org](http://yourregionyourvoice.org)



## For More Information

---

**Monica Haines Benkhedda** | Public Involvement Coordinator

410-732-0500 x1047 | [mhainesbenkhedda@baltometro.org](mailto:mhainesbenkhedda@baltometro.org) | [www.baltometro.org](http://www.baltometro.org)

