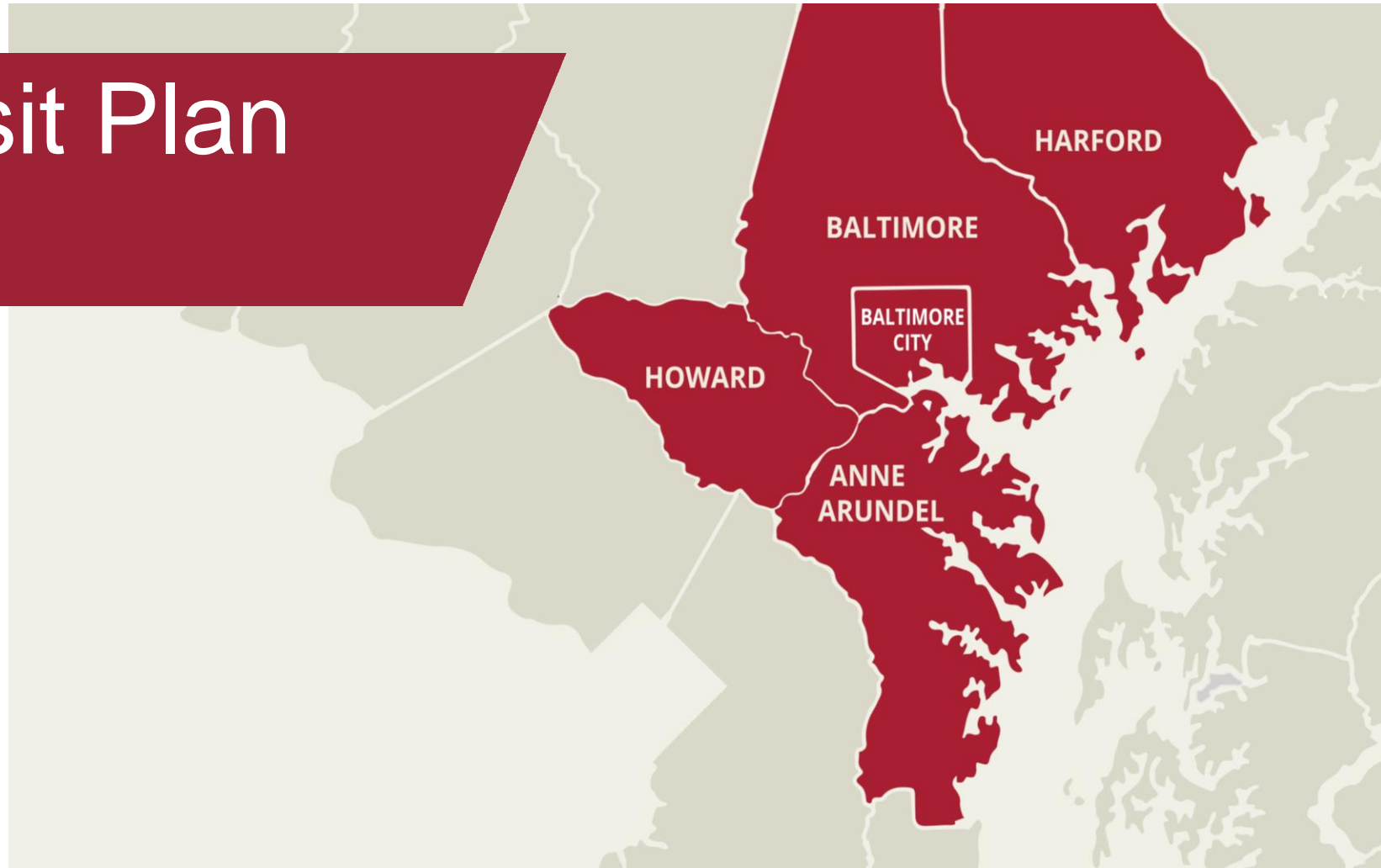


Connecting Our Future

A Regional Transit Plan for Central Maryland

Regional Transit Plan BRTB

January 14, 2025



Today's Meeting

- Review Previous Plan Contents:
 - Process and Participation
 - Objectives and Strategies
 - Corridors
- Lay out Schedule and Next Steps

2020 RTP



2020 RTP: Process and Participation



The RTP was intended to:

- 1) Lay out a 25-year vision for public transportation in the Central Maryland Region.
- 2) Identify ways to
 - i. Improve existing MTA transit
 - ii. Better coordinate transit region-wide and across providers
 - iii. Show places/corridors that would most benefit from new infrastructure investments
- 3) Provide an opportunity to coordinate transit planning with local land use and other statewide transportation planning efforts

2020 RTP: Process and Participation

The RTP was produced collaboratively

- The formation and involvement of a Commission was mandatory, and these meetings meaningfully informed plan goals objectives and methodologies
 - *The BRTC is the required signatory for the plan update*
- LOTS, agency, and local government representatives were involved regularly, and have remained engaged through implementation
- Extensive public engagement informed both priorities and methodologies, setting a durable baseline understanding for the RTP and its planned updates

60+

Pop-Ups and Presentations



10

Regional Open Houses



8

Commission Meetings



5

Inter-Agency Meetings



3,426

Survey Responses



Connecting Our Future

A Regional Transit Plan for Central Maryland

2020 RTP: Goals and Objectives

The RTP had three broad goals:

- **Optimize existing services**
- **Plan for their integration with future services**
- **Enhance fiscal sustainability.**

Six key Objectives were associated with these goals.

Objectives



2020 RTP: Strategies

Each of the objectives had strategies for its implementation

- Progress has been made on all strategies identified in the 2020 Plan's Five-Year Implementation Plan
- Of the 34 strategies in the Five-Year Implementation Plan:
 - 7 have been completed
 - Others are in progress or continual commitments
- *The BRTC will be asked to consider the Objectives and Strategies for update/addition*

Corridor Update

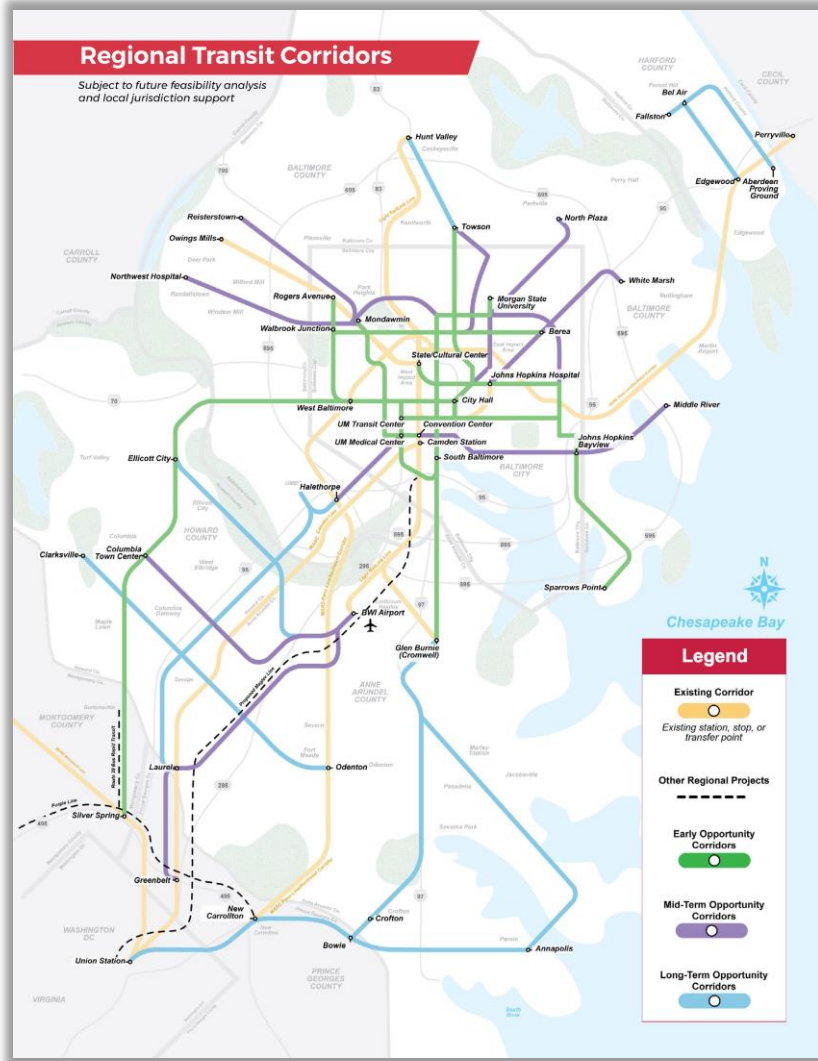
FLASH is coming to Howard County!

FLASH
US 29

Hours of Operation
5:00am – 9:00am
3:30pm – 8:00pm

The banner displays a map of Howard County, Maryland, with a blue line indicating the FLASH route along US 29. Key locations marked on the map include Harper's Choice, Wilde Lake, The Mall in Columbia, Clarksville, Hickory Ridge, Simpsonville, Arrowhead, Atholton, Guilford, Columbia, Oakland Mills, and Long Reach. Major roads shown include US 108, MD 32, and MD 175. The bus interior shows blue seats and a sign for 'CITADOS'.

2020 RTP: Corridors



Early Opportunity	
1	Morgan State Univ. to South Baltimore
2	Glen Burnie to South Baltimore
6	Towson to UM Transit Center
12	Mondawmin to South Baltimore
13	Rogers Avenue to City Hall
16	Ellicott City to Convention Center
17	West Baltimore to Hopkins Bayview
18	Sparrows Point to Hopkins Bayview
19	State Center to Hopkins Bayview
20	Walbrook Junction to Bera
27	Ellicott City to Silver Spring

Mid-Term Opportunity	
5	Convention Center to Middle River
8	Towson to South Baltimore
9	North Plaza to UM Transit Center
10	White Marsh to Johns Hopkins Hospital
14	Mondawmin to Reisterstown
15	Mondawmin to Northwest Hospital
22	Mondawmin to Hopkins Bayview
23	Halethorpe to UM Transit Center
24	BWI Airport to Greenbelt
25	BWI Airport to Columbia Town Center

Long-Term Opportunity	
3	Glen Burnie to Annapolis
4	Glen Burnie to Bowie
7	Towson to Hunt Valley
11	Fallston to Aberdeen Proving Ground
21	Laurel to Halethorpe
26	Odenton to Clarksville
28	Annapolis to Union Station
29	Bel Air to Edgewood
30	Ellicott City to BWI Airport

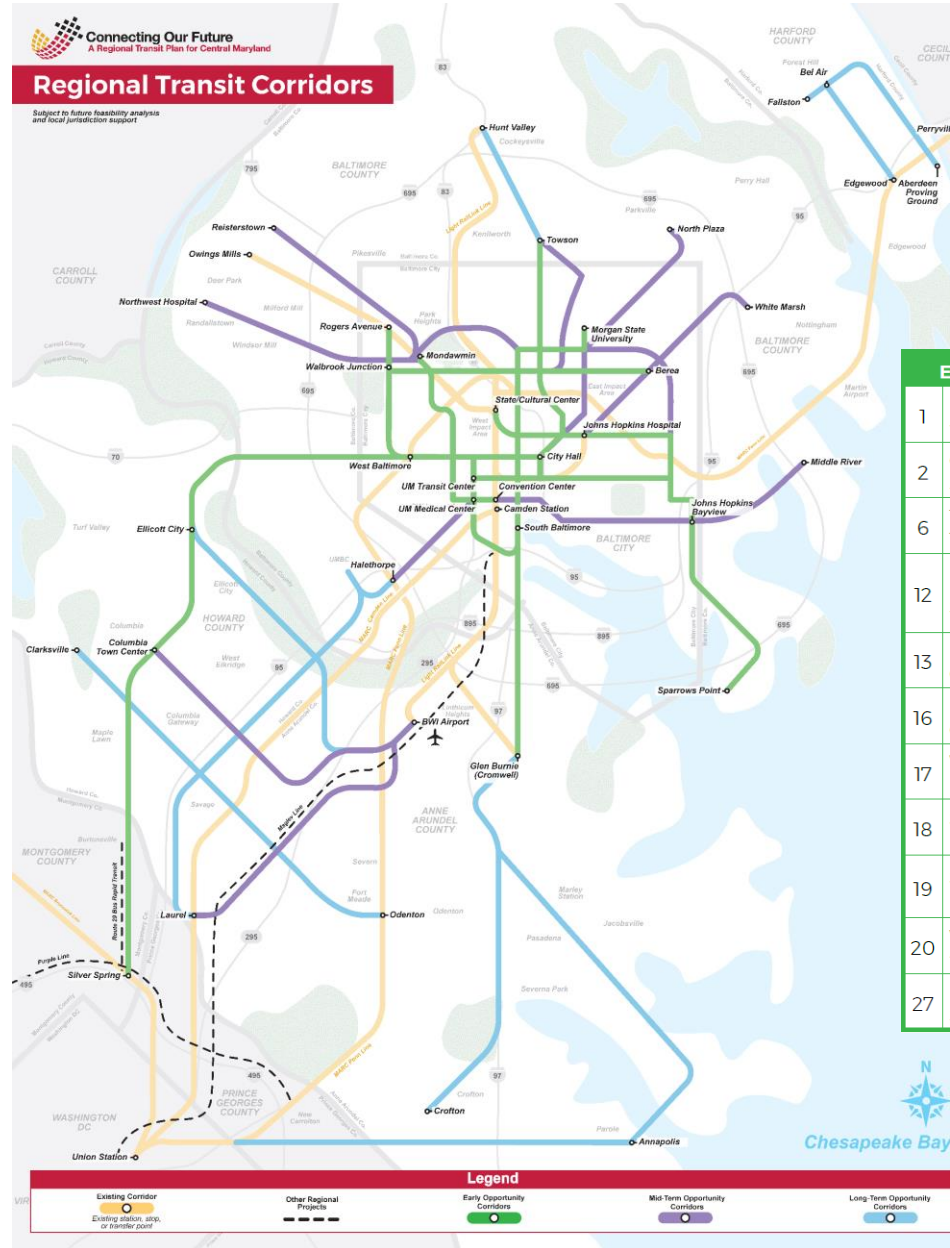
2020 RTP Corridor Progress

- Early Opportunity Corridors have made great strides since 2020

- RAISE East-West (13,16)
- Red Line (16, 17)
- FLASH BRT (27)
- East Baltimore County Access Study (18)

- Analysis conducted on some Mid- and Long-Term corridors through:

- North-South Feasibility Study (7,8)
- East Baltimore County Access Study (5)
- BWI to Columbia Pilot Feasibility Study (25)



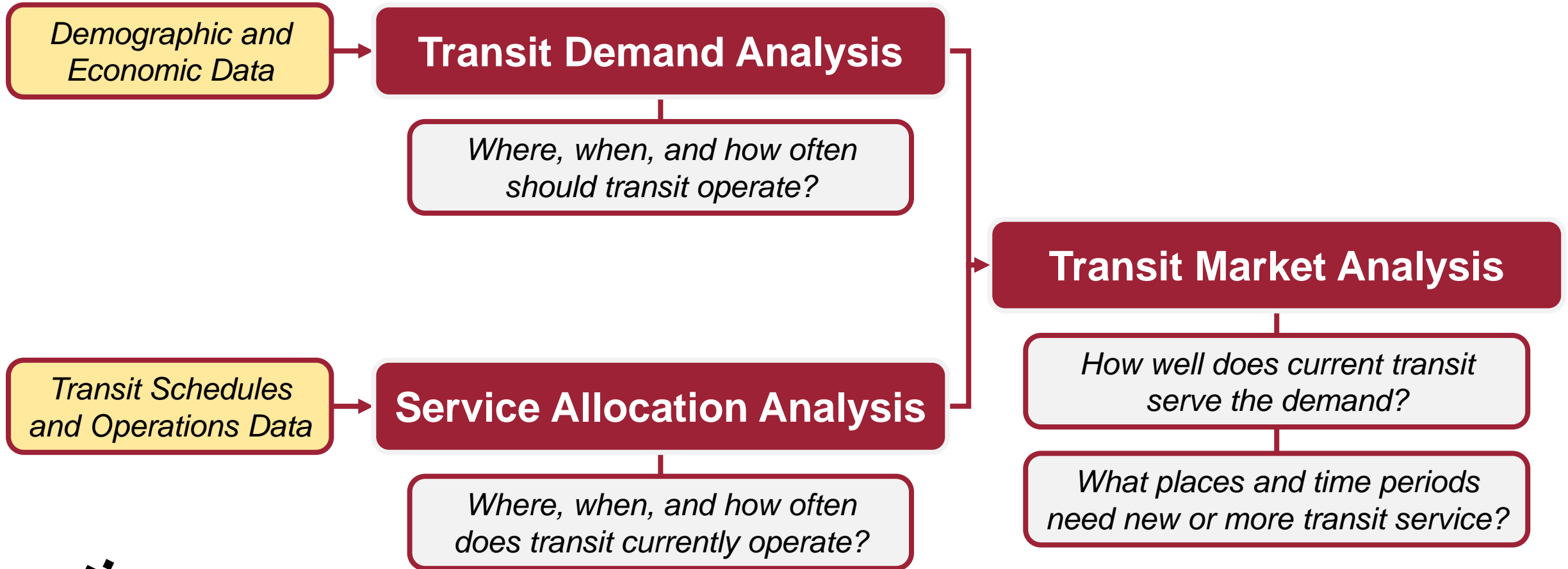
Early Opportunity	
1	Morgan State Univ. to South Baltimore
2	Glen Burnie to South Baltimore
6	Towson to UM Transit Center
12	Mondawmin to South Baltimore
13	Rogers Avenue to City Hall
16	Ellicott City to Convention Center
17	West Baltimore to Hopkins Bayview
18	Sparrows Point to Hopkins Bayview
19	State Center to Hopkins Bayview
20	Walbrook Junction to Bera
27	Ellicott City to Silver Spring

Mid-Term Opportunity	
5	Convention Center to Middle River
8	Towson to South Baltimore
9	North Plaza to UM Transit Center
10	White Marsh to Johns Hopkins Hospital
14	Mondawmin to Reisterstown
15	Mondawmin to Northwest Hospital
22	Mondawmin to Hopkins Bayview
23	Halethorpe to UM Transit Center
24	BWI Airport to Greenbelt
25	BWI Airport to Columbia Town Center

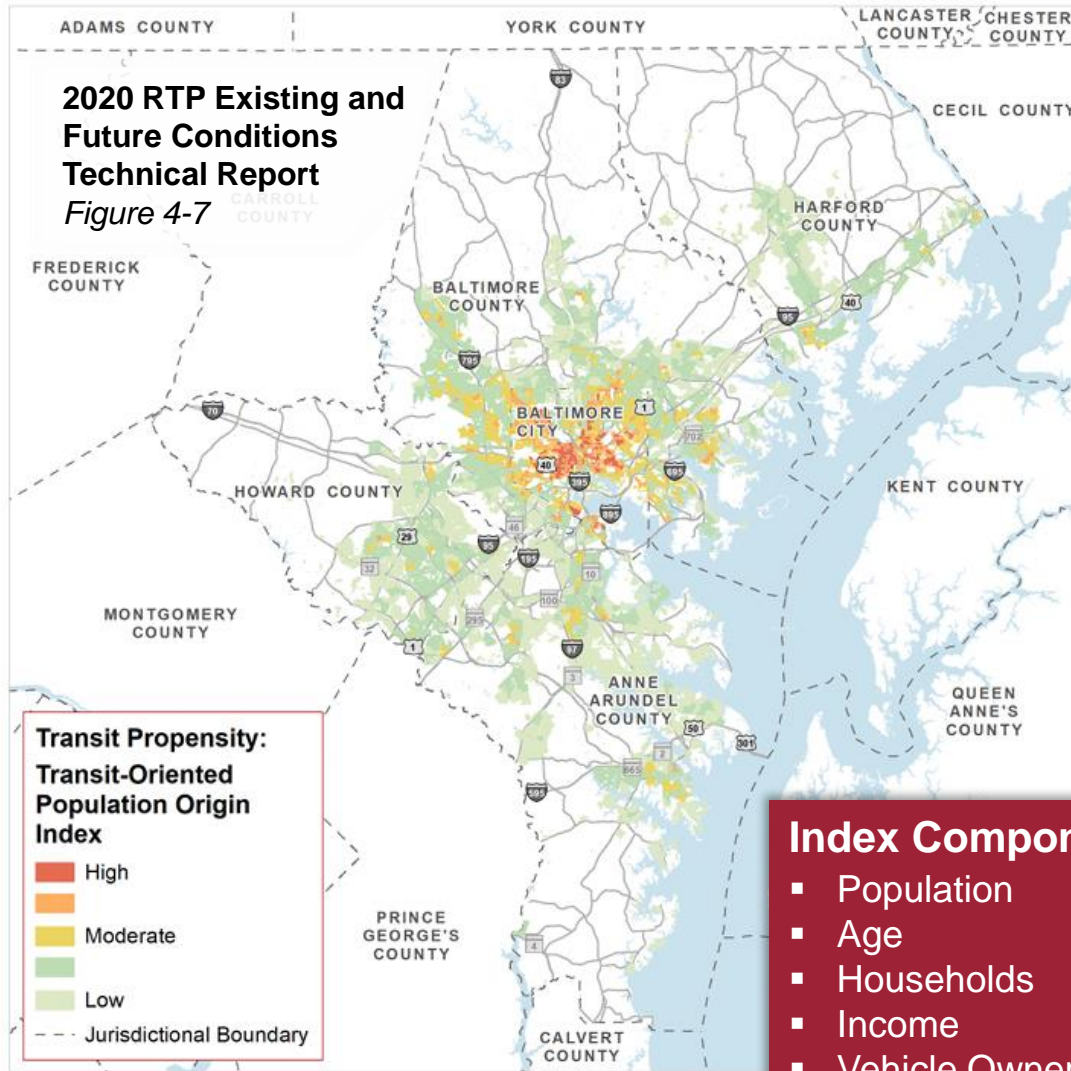
Long-Term Opportunity	
3	Glen Burnie to Annapolis
4	Glen Burnie to Bowie
7	Towson to Hunt Valley
11	Fallston to Aberdeen Proving Ground
21	Laurel to Halethorpe
26	Odenton to Clarksville
28	Annapolis to Union Station
29	Bel Air to Edgewood
30	Ellicott City to BWI Airport

RTP Corridors: Plan to Update

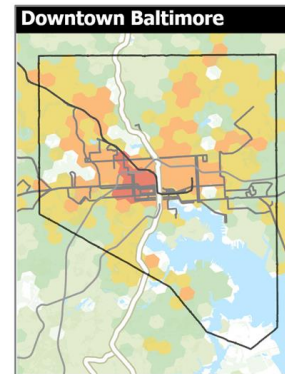
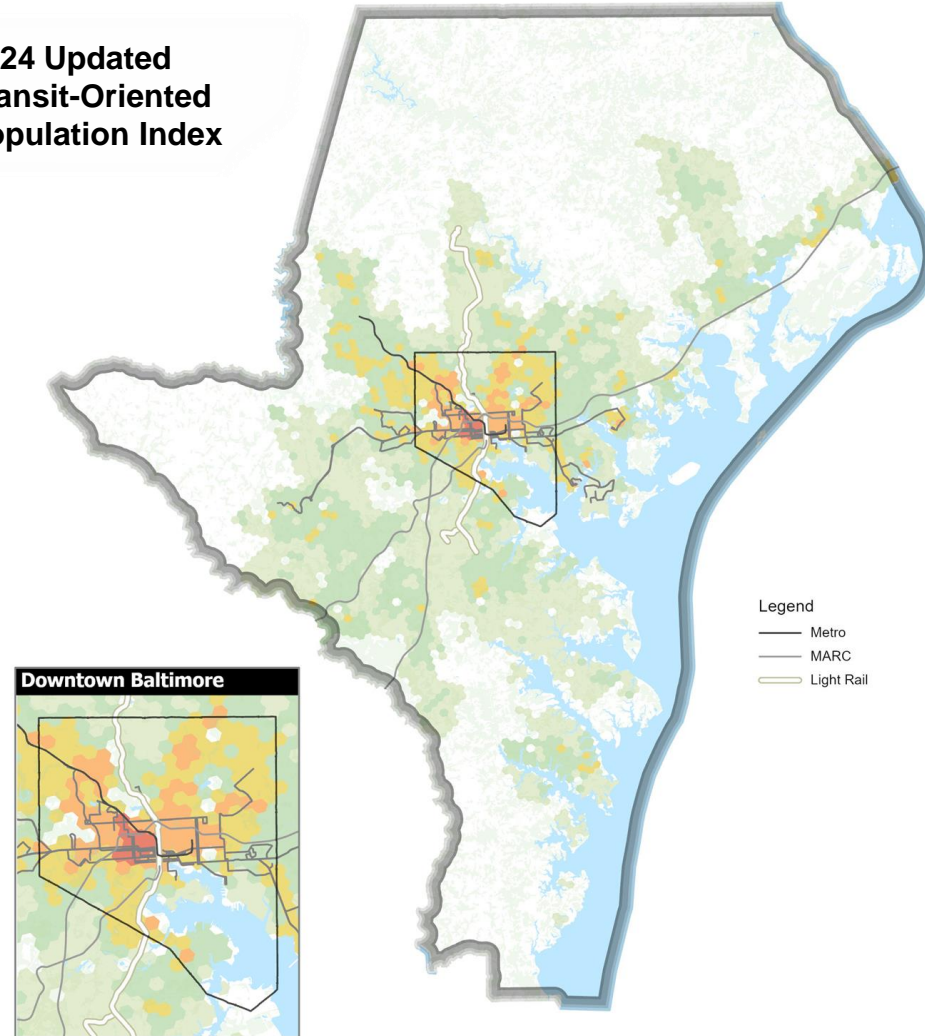
There have not been drastic changes in transportation and land use in the region since 2020, but it is still worthwhile to update our understanding of the transit market



Updating the Corridors: Demand Analysis



2024 Updated Transit-Oriented Population Index

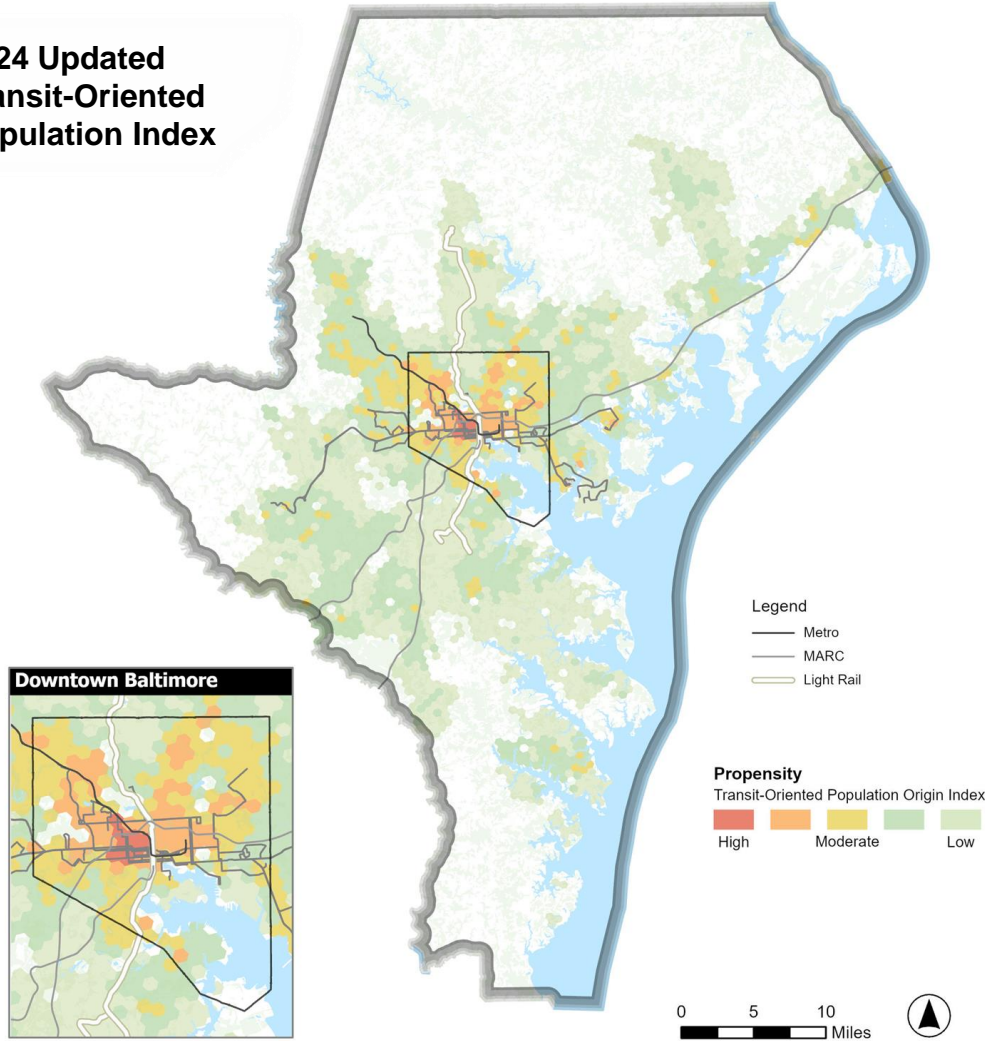


Index Components

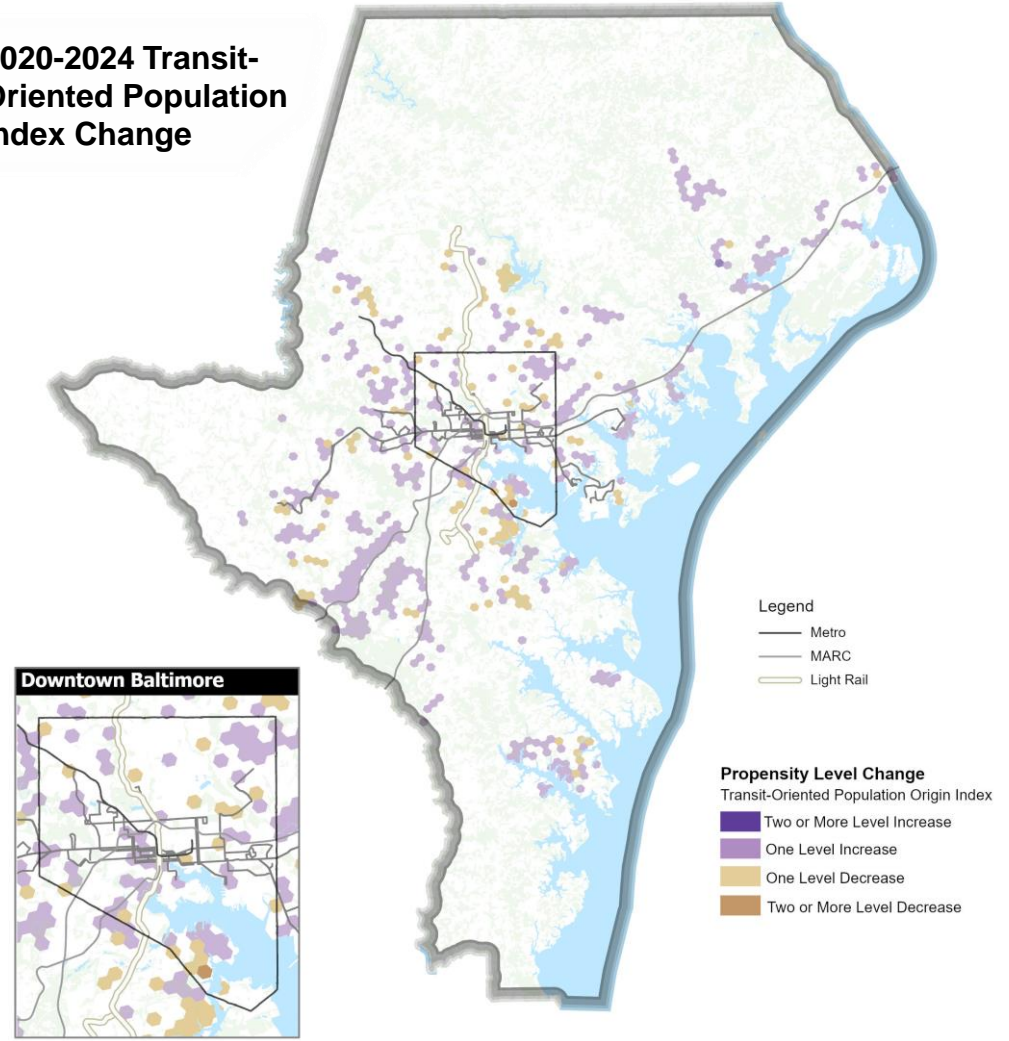
- Population
- Age
- Households
- Income
- Vehicle Ownership
- Disability Status

Updating the Corridors: Demand Analysis

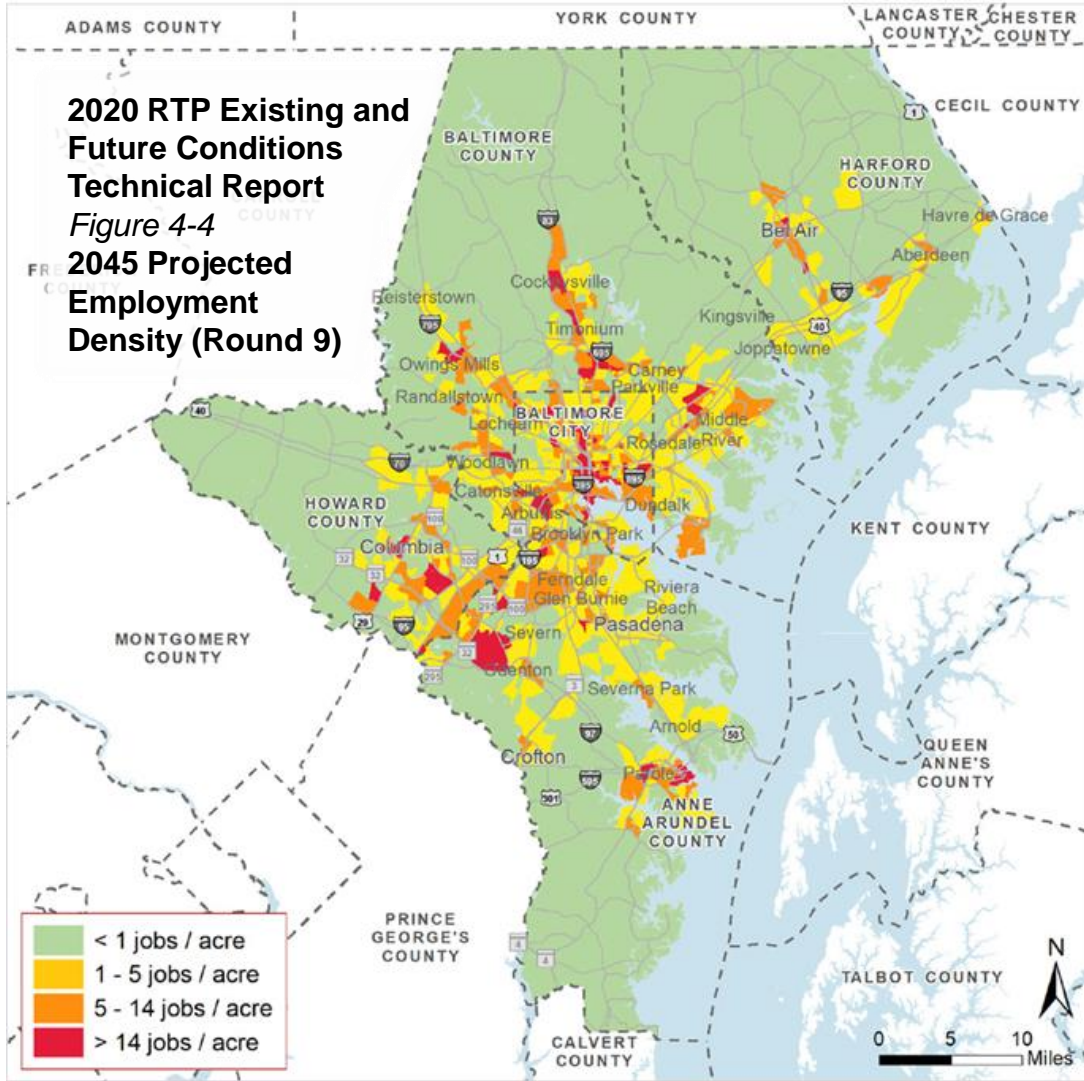
2024 Updated
Transit-Oriented
Population Index



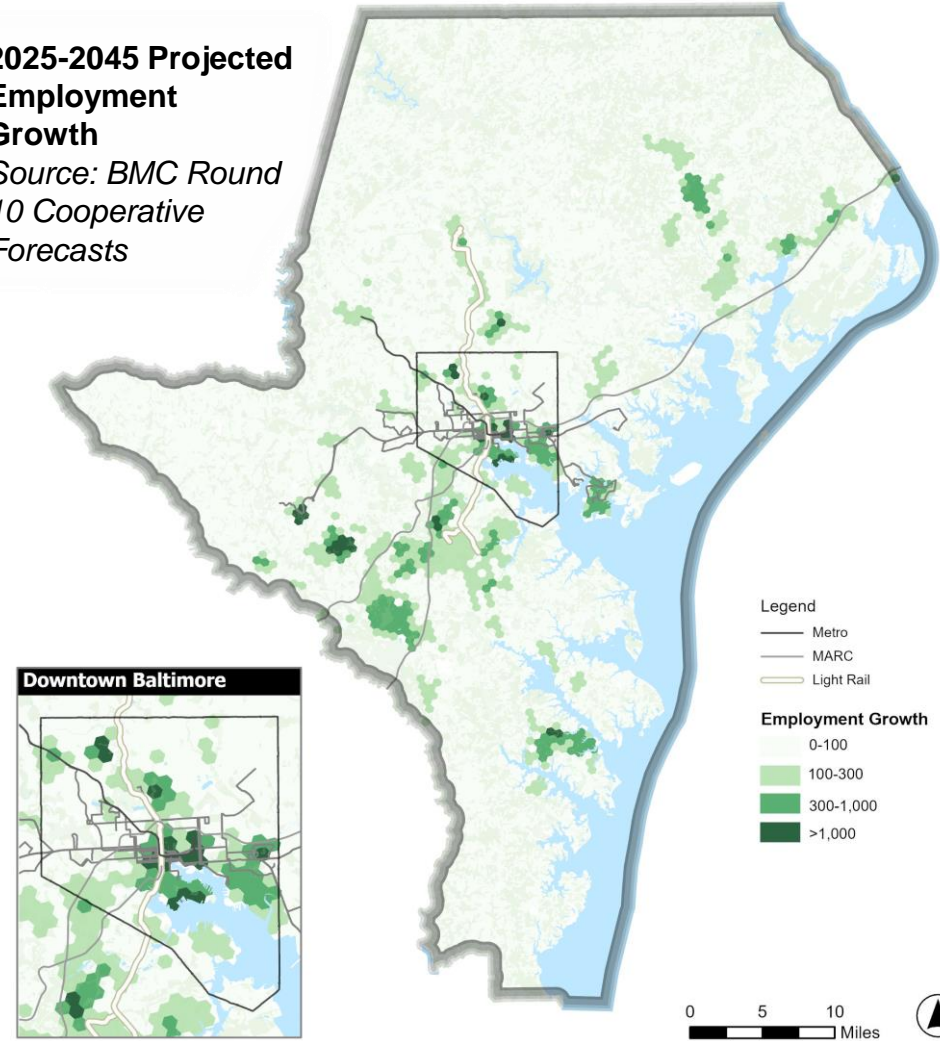
2020-2024 Transit-
Oriented Population
Index Change



Updating the Corridors: Demand Analysis



2025-2045 Projected Employment Growth
Source: BMC Round 10 Cooperative Forecasts



Discussion Question: Updating Corridor Analysis

In addition to the factors mapped on previous slides, the 2020 analyses to identify the Corridors included:

- Density and growth of population
- Density of employment and other destinations
- Travel flows for work and non-work trips
- Existing transit frequency and span of service
- Existing transit ridership and growth trends

Destinations Analyzed

- Employment
- Retail & Restaurant
- Healthcare
- Social Assistance
- Education
- Government

Schedule and Next Steps



Connecting Our Future
A Regional Transit Plan for Central Maryland



Schedule: Project Activities

Winter 2024-25

- Document progress on RTP strategies and corridors
- Update transit market and demand analysis



BRTC Meeting 1

Spring 2025

- Confirm and prioritize RTP corridors
- Assess modal feasibility of RTP corridors



BRTC Meeting 2 & 3

Summer 2025

- Develop service improvement phasing
- Identify updates to RTP strategies
- Draft RTP update document



BRTC Meeting 4

Fall 2025

- Finalize plan document
- Present finalized plan to BRTC for adoption
- Publish adopted plan



BRTC Meeting 5 & 6

Next Steps Corridor Confirmation and Prioritization

- Refine the results of the Market and Demand Analysis Update and begin the Corridor Confirmation and Prioritization
 - Incorporate BRTC input into Objectives and Market/Corridor Analysis methodology
- Spring 2025:
 - Present final results of Market and Demand Analysis
 - Introduce Corridor Confirmation and Prioritization
 - Solicit feedback on Mode Suitability Assessment approach