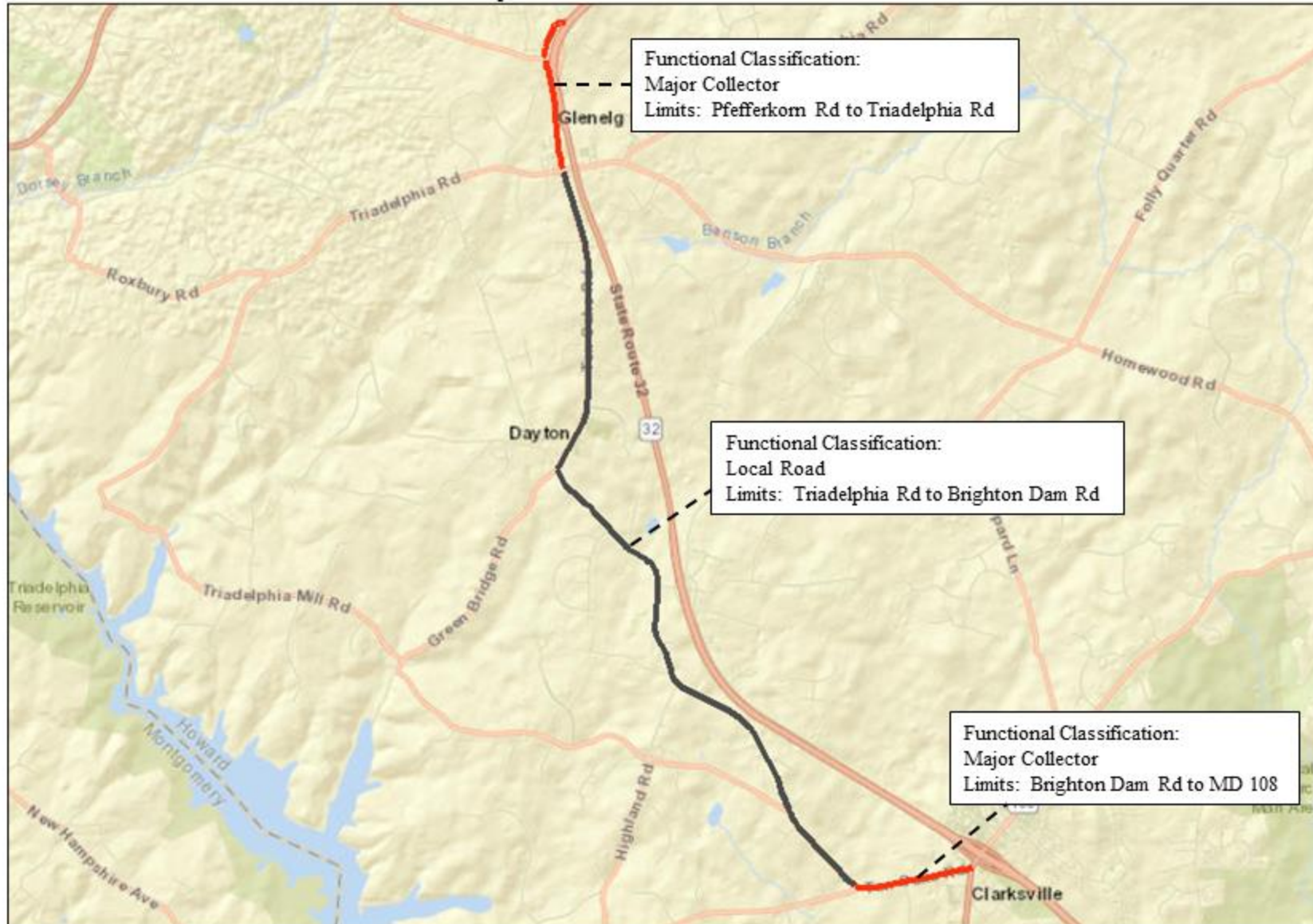


# FUNCTIONAL CLASSIFICATION CHANGE: TEN OAKS ROAD

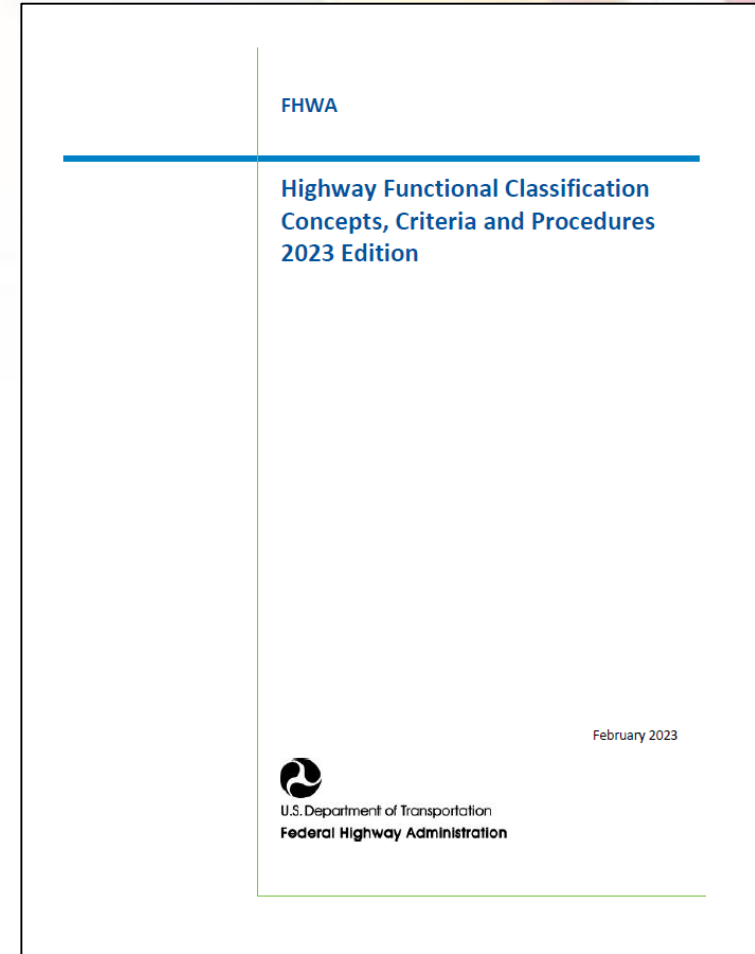
Baltimore Regional Transportation Board  
August 27, 2024

## Ten Oaks Road Location Map



# FHWA GUIDANCE

1. System Continuity
  - A basic tenet of the functional classification network
2. Annual Average Daily Traffic
  - Approx. 5,000
3. Highway Design
  - May influence design standards



# INTERIM ADJUSTMENT PROCESS

- 1. Coordinate with local planning partners**
- 2. Coordinate with MPO (If applicable)**
- 3. Submit request to FHWA for concurrence**
- 4. SHA's Data Services Division updates Roadway database**

# QUESTIONS?

**Darren Bean**

**Functional Classification Program Manager**

**MDOT SHA**

**Regional and Intermodal Planning Division**

**410-545-0071**

***DBEAN@mdot.maryland.gov***