



Resilience 2050

Adapting to the Challenges of Tomorrow

L RTP Update and Public Comment Period

Resilience 2050: Adapting to the Challenges of Tomorrow

June 27, 2023



»BRTB

Resilience 2050 Resolutions

- Goals and Strategies: [BRTB Res #22-6](#) (Nov 2021)
- *Resilience 2050* Highlights:
 - Comment period held from September 8 – October 10, 2021
 - 1,583 views, 36 participants and 157 comments
 - Themes in comments:
 - Improve safety for transit and pedestrians
 - Reliable and timely transit service
 - Shift to sustainable modes and away from roadway widening
 - Accessibility received the most comments followed by promote informed decision making
 - Staff drafted and reviewed recommended edits with Technical Committee members
 - Comments influenced project scoring updates...

Resilience 2050 Resolutions

- Project Scoring Methodology: [BRTB Res #22-7](#) (Nov 2021)
- *Resilience 2050* Improvements:
 - Rebalance weighting to double points allocated to safety
 - Add transit scoring where previously absent: complete streets, safety, and security
 - Clarify definitions and make scores less subjective
 - Transition to outcomes based scoring – how does the project contribute to creating a complete system
 - Clarify/Integrate impacts to EJ populations into scoring
 - Increase max technical score for transit projects to 55, with highway max remaining at 50

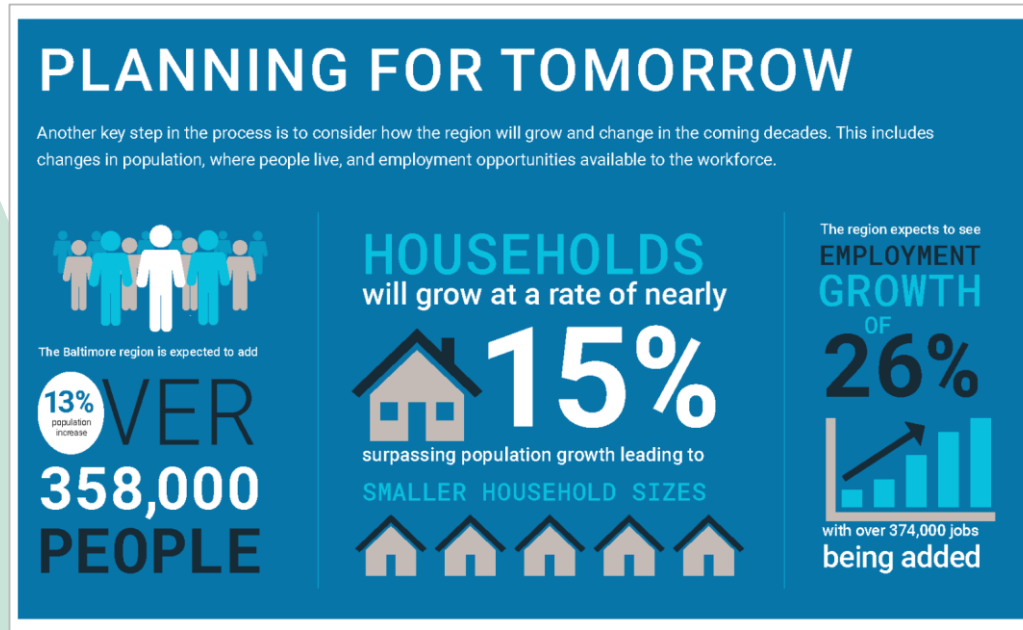
Table 6 - Technical Scoring Goals, Criteria, and Points

Goal/Criteria	Technical Scoring Points: Transit Projects	Technical Scoring Points: Roadway Projects
Safety*	10	10
Accessibility – Complete Streets*	5	5
Accessibility – Access to Jobs*	10	5
Mobility	10	10
Environmental – Effects on ecologically sensitive lands and culturally significant resources*	5	5
Environmental – Potential for Greenhouse Gas Emissions Reductions	5	5
Security*	5	5
Economic Prosperity	5	5
Total Technical Points	55	50

*includes points related to project impacts on EJ populations

Resilience 2050 Resolutions

- Round 10 Socioeconomic Forecasts of Population, Households and Employment: [BRTB Res #23-1](#) (July 2022)



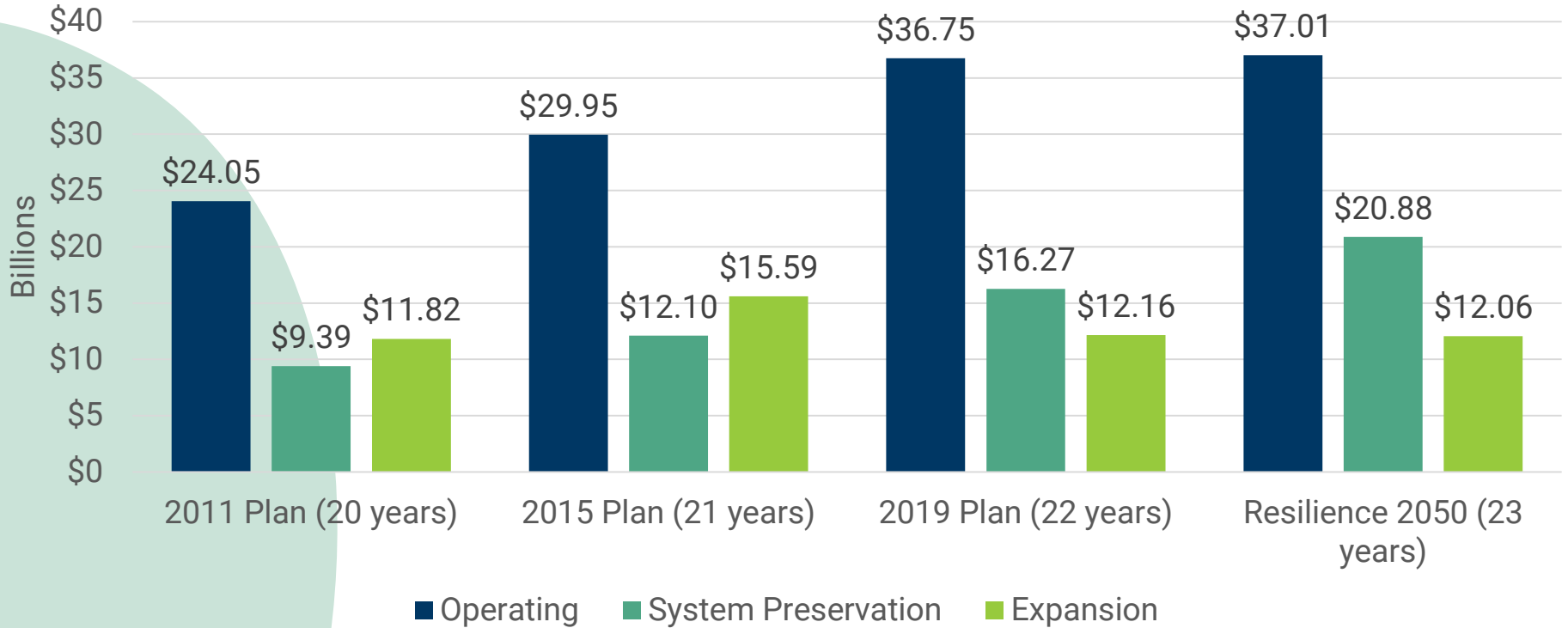
Resilience 2050 Resolutions

- Financial Forecast: [BRTB Res #23-13](#) (January 2023)
- *Resilience 2050* Highlights:
 - Forecast of local, state and federal revenues anticipated to be available from 2028-2050
 - Includes new local funding projection tool that can be replicated and improved for future LRTPs:

Time Period	Operating (millions)	System Preservation (millions)	Expansion (millions)	Total (millions)
2028-2032	\$2,829	\$1,223	\$185	\$4,237
2033-2037	\$3,193	\$1,304	\$199	\$4,696
2038-2042	\$3,614	\$1,397	\$215	\$5,226
2043-2047	\$4,104	\$1,506	\$233	\$5,843
2048-2050	\$2,731	\$963	\$150	\$3,844
Total 2028-2050	\$16,471	\$6,393	\$982	\$23,846

State and Federal Financial Forecast

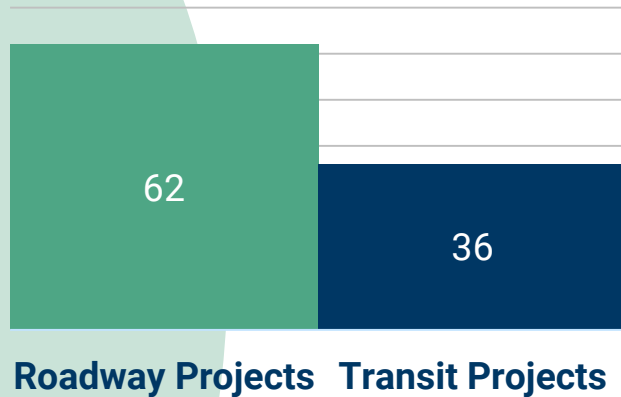
L RTP Comparison: Funds by Category



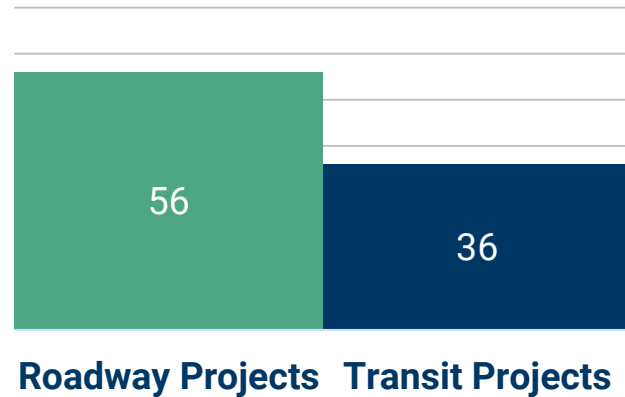
Resilience 2050 Preferred Alternative

- Preferred Alternative of Major Capital Expansion and System Preservation projects selected based on:
 - Project Scores
 - Project Costs
 - Revenues anticipated to be available from 2028-2050

Candidate Projects

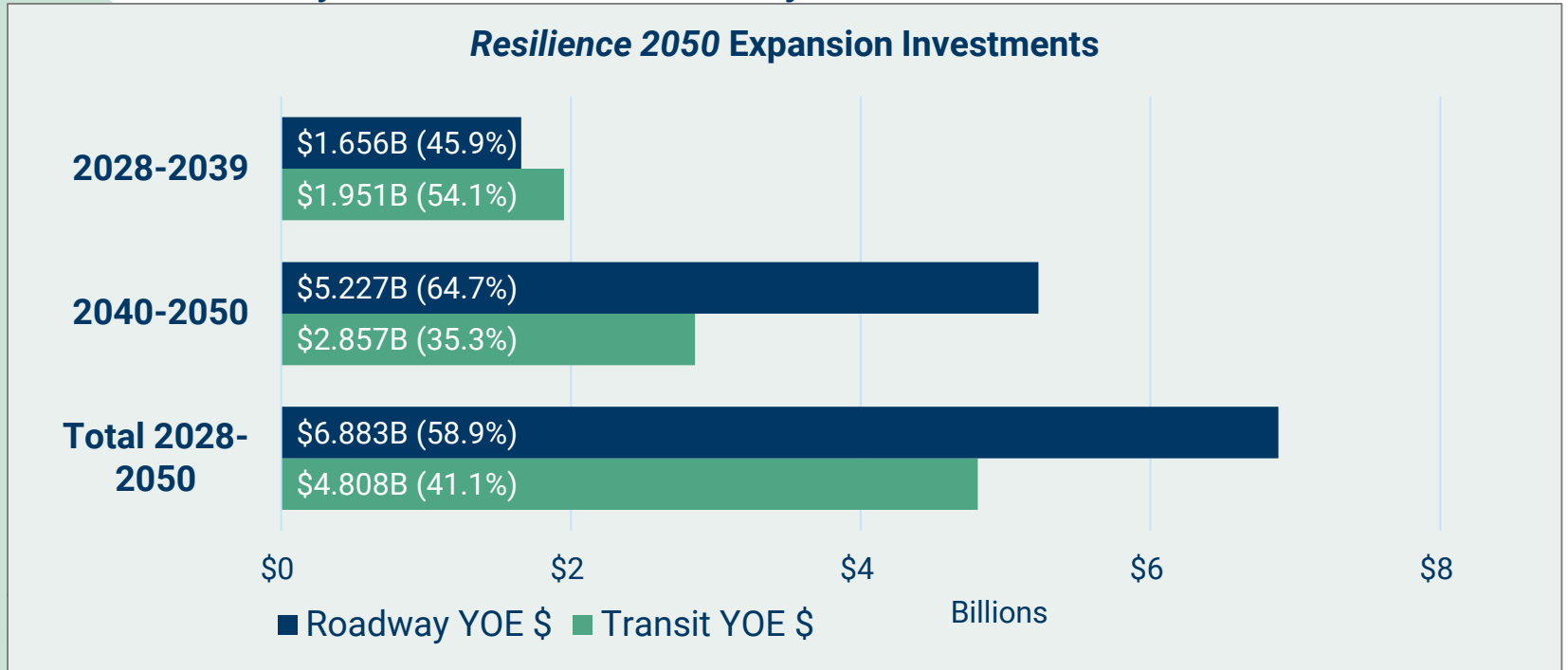


Selected Projects



Resilience 2050 Preferred Alternative

- Preferred Alternative:
 - 79 Expansion Projects
 - 13 System Preservation Projects



Resilience 2050 Preferred Alternative

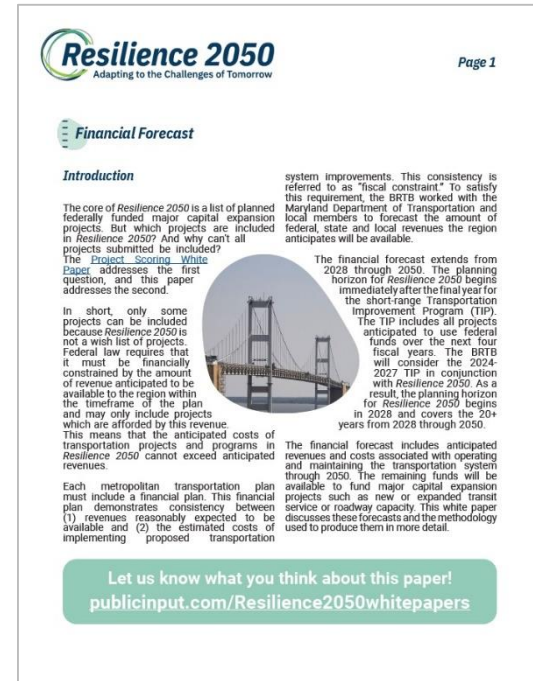
- \$280 million in funding set aside from expansion funds to support various strategies intended to improve air quality:
 - Transportation System Management and Operations strategies intended to optimize the performance of existing roadway infrastructure without adding capacity
 - Complete Streets strategies focused on creating roadways that are safe and comfortable for all users and that increase equity and access to destinations
 - Strategies to reduce emissions through cleaner technologies, capital improvements, and behavioral incentive programs
 - Regional active transportation priority projects identified by BPAG in 2022
 - Locally Operated Transit Systems

Regional Bicycle and Pedestrian Priorities

Priority Project	Location	Length
Complete the Patapsco Regional Greenway	Region-wide	40 miles
Complete the South Shore Trail Missing Segments	Anne Arundel County	13.14 miles
Connect BWI Trail Loop to the Gwynns Falls Trail	Anne Arundel County	1.3 miles
Citywide ADA Infrastructure Improvements	Baltimore City	N/A
Complete the Baltimore Greenway Trail Network	Baltimore City	35 miles
Separated Bicycle Facilities along Liberty Heights	Baltimore City	3.5 miles
Connection through Baltimore County to Ma & Pa Trail in Harford County	Baltimore County and Harford County	17.3 miles
Torrey C. Brown/NCR Trail Connections	Baltimore County	7 miles
Gwynns Falls Trail Connection	Baltimore County	18 miles
Northwest Trail	Carroll County	5.6 miles
Wakefield Valley Park Bicycle & Pedestrian Trail System	Carroll County	8 miles
B&A Trail - Annapolis Extension	City of Annapolis and Anne Arundel County	4.3 miles
Shared Use Path and Sidepath along West East Express	City of Annapolis	2.2 miles
Patuxent Branch Trail Completion	Howard County	6 miles
Shared Use Path and Sidewalk along US 1 Corridor	Howard County	10.9 miles
Connect the Cross Island Trail and South Island Trail	Queen Anne's County	3 miles

Resilience 2050 White Papers

- White Paper Series on LRTP Topics: Monthly releases from February 2022 – February 2023
 - Project Scoring
 - Traffic Safety
 - Freight Movement
 - Transit
 - Air Quality
 - Emerging Technologies
 - Active Transportation
 - Socioeconomic Forecasting
 - Financial Forecast
 - Climate Change and Resilience



Resilience 2050 Public Comment Period

- May 17 – June 20: Comment period for *Resilience 2050*, 2024-2027 TIP and Air Quality Conformity Determination
- 8 Meetings throughout the region (one virtual; seven in person)
- 100+ comments received
- PublicInput.com/Resilience2050 served as a central portal for information including:
 - Overview and links to draft *Resilience 2050*, 2024-2027 TIP and Air Quality Conformity Determination
 - Public Meeting Information
 - Commenting

Resilience 2050 Public Comment Period

Resilience 2050

The Baltimore Regional Transportation Board (BRTB) is planning for the future of transportation in our region and we'd like to hear what you think! Comments are welcome on over \$74 billion worth of transportation investments being planned through 2050. Take a look at the information below and let us know what you think by Tuesday, June 20, 2023.

Overview

Public Meetings

Share Your Thoughts

The Baltimore Regional Transportation Board, as the metropolitan planning organization for the Baltimore region, has put together a list of transportation projects for the coming two decades. An overview is below.

Long Term Investments

Every four years, the BRTB develops a long-term plan for transportation investments. The 2023 plan is called *Resilience 2050: Adapting to the Challenges of Tomorrow*. Resilience is necessary for the ongoing performance of our transportation system, our environment, our economy and our livelihoods.

This \$70 billion plan includes investments supporting the operation and preservation of our transportation system along with details on transit, bicycle, pedestrian, roadway, and interchange projects that may receive federal funding for the years 2028 through 2050. Many of these projects expand roadway or transit capacity, while others help our transportation system to



COMPLETE

Project Ideas Submitted

BRTB members identified projects throughout the region that they'd like to be considered for inclusion in *Resilience 2050* and the 2024-2027 TIP. Staff verified project goals and costs.

Resilience 2050 Public Comment Period

- Advertised in 13 outlets, including print, radio and digital platforms
- Created regional and local media kits
- Distributed customized media kits to each jurisdiction



Resilience 2050
Adapting to the Challenges of Tomorrow

\$10.5 billion

**impacting transportation
in Baltimore City**

- Improving the Hanover Street Bridge corridor for all users
- Deconstructing US 40 from Smallwood to Greene
- Developing an east-west transit corridor
- ... and more.

Share your thoughts!
publicinput.com/resilience2050

▲ Short-Range Projects
● Long-Range Projects

BAITMORE METROPOLITAN COUNCIL **BRTB**



Resilience 2050
Adapting to the Challenges of Tomorrow

These draft plans include \$22.4 billion for transportation projects in the region.

▲ Short-Range Projects
● Long-Range Projects

We want to hear from you!

Please join us for a virtual meeting:

**Wednesday, May 24
12:00-1:00 p.m.**

or join any of our in-person meetings in Baltimore City, Bel Air, Elkridge City, Glen Burnie, Stevensville, Towson or Westminster.

Tune in live at: publicinput.com/Resilience2050

BAITMORE METROPOLITAN COUNCIL **BRTB**

Resilience 2050 Public Comment Period

- Main themes from comments:
 - Negative sentiment towards scale of roadway expansion in the preferred alternative, both number of projects and amount of expenditures (56 projects; \$6.883 billion)
 - Concerned with implications of roadway expenditures for:
 - climate change
 - land use and sprawl
 - air quality and public health
 - Positive sentiment toward more transit expansion and increased transit reliability
 - Positive sentiment towards bicycle and pedestrian infrastructure

Resources

- PublicInput.com/Resilience2050
- BMC Website: Resilience2050.com
- [Storymap](#)
- White Papers: <https://publicinput.com/resilience2050whitepapers>

Thanks!



Zach Kaufman
Senior Transportation Planner
Baltimore Metropolitan Council
zkaufman@baltometro.org
410-732-0500 x 1048

