

# Baltimore Regional Transportation Board Equity Scan

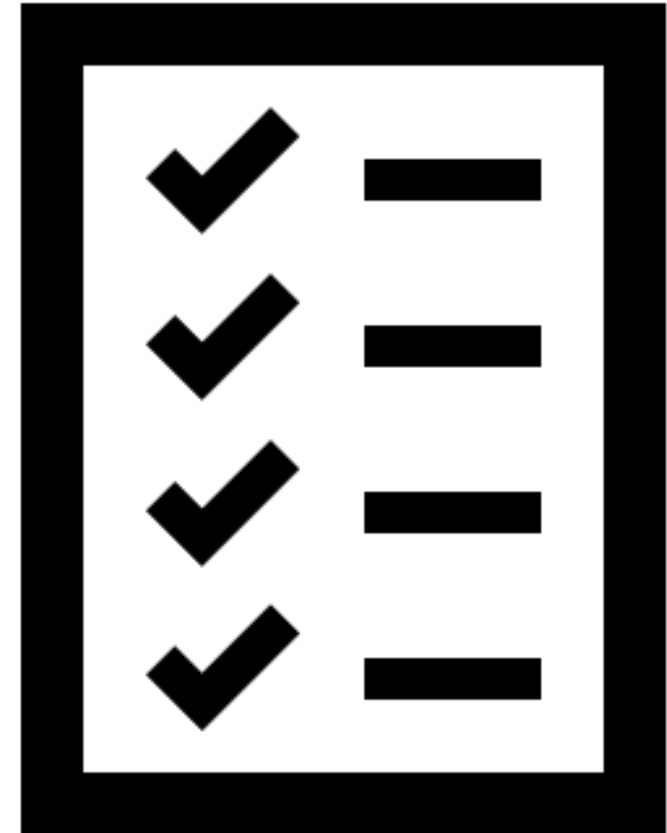
BRTB Board Meeting - May 23, 2023



# Equity Scan Discussion Agenda

---

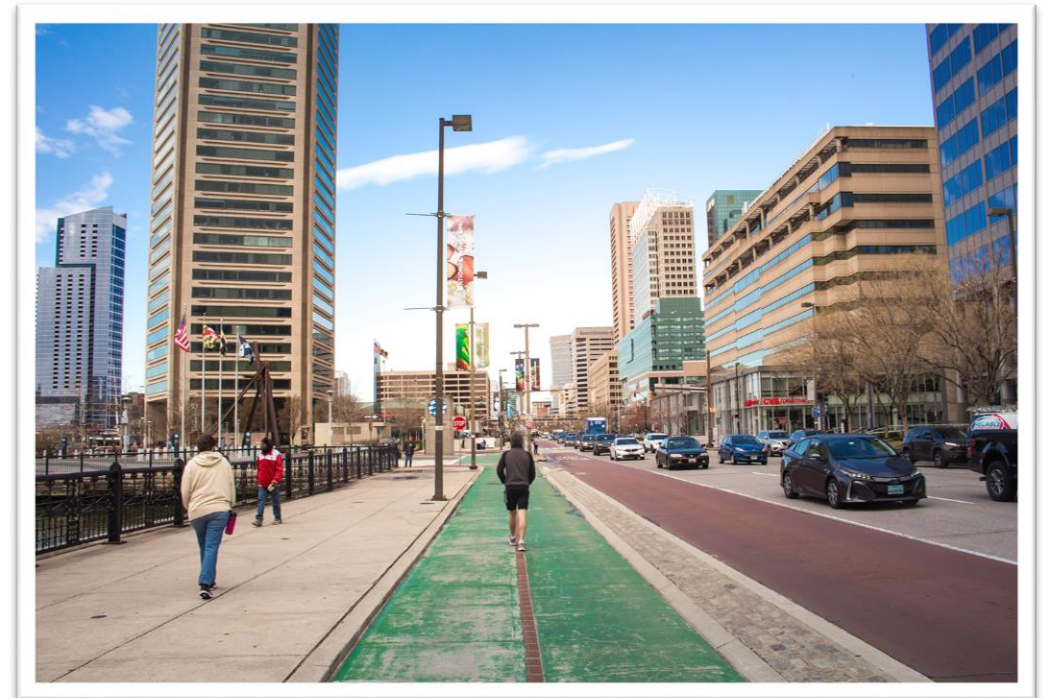
- Welcome and Introductions
- Current BMC/BRTB Equity Activities
- Equity Scan Purpose and Process
- Feedback from Transportation CORE
- Feedback from BRTB Technical Committee
- Preliminary Recommendations
- Facilitated Group Discussion



# Current BMC/BRTB Equity Activities

---

Study	Study undue burdens of transportation fares, fees and fines on disadvantaged populations
Conduct	Conduct Equity Scan (this project)
Analyze	Analyze locations and characteristics of vulnerable populations
Engage	Every Voice Counts Academy Transportation CORE







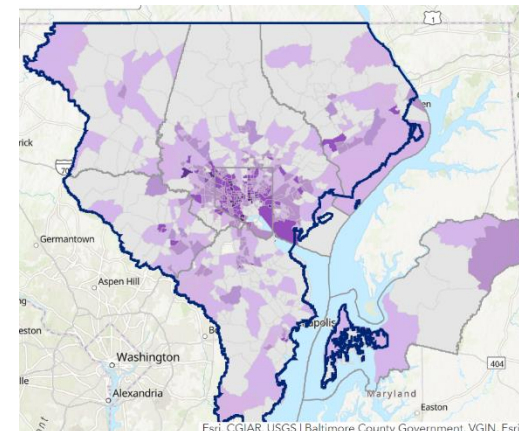
# Equity Scan Purpose and Process



# Equity Scan Purpose

On behalf of BRTB, BMC is identifying strategies to deepen its commitment to equity through four key transportation planning activities:

- Unified planning work program (UPWP)
  - Funds **plans, studies**, and analysis tools
- Long-range transportation plan (LRTP)
  - Includes **needs assessments** and long-range **funding** plan for high-priority **investments**
- Transportation improvement program (TIP)
  - Includes short-range **funding** program for selected **investments**
- Public participation plan (PPP)
  - Guides **engagement** with the public and key stakeholders



# Equity Scan Process

---

## **BRTB Internal Scan (Nov 2022 – Feb 2023)**

- ✓ Review key BRTB plans: LRTP, TIP, UPWP, PPP
- ✓ Conduct four interviews with BMC staff
- ✓ Complete a white paper summarizing internal scan results

## **Peer MPO Scan (Dec 2022-April 2023)**

- ✓ Review LRTPs, TIPs, UPWPs, and PPPs of 20 peer MPOs
- ✓ Conduct five interviews with peer agency staff
- ✓ Complete a white paper on peer agency best practices
- ✓ Discuss findings with BRTB Technical Committee

## **Recommendations (April 2023-June 2023)**

- Brainstorm potential recommendations with BMC Transportation Core (4/26/23)
- Discuss potential recommendations with BRTB Technical Committee (5/2/23)

### **➤ Discuss draft recommendations with BRTB Policy Board (5/23/23)**

- Fine-tune recommendations and implementation steps with BMC staff (June 2023)





# Transportation CORE Ideas

# Transportation CORE Feedback: Plans & Studies

---

Research green solutions:  
electric vehicles, school  
and commuter buses.

Study reviving Red Line out  
to West Baltimore and  
extending DC metro to  
Laurel/ Howard/ Baltimore.

Assess how to increase  
public transit in corridors  
where traffic is most  
congested.

Assess how local and state  
agencies can implement  
emerging transportation  
technologies in an  
equitable way.

Partner with colleges and  
universities on equity-  
related research

Plan strategies to  
interconnect local  
paratransit services



# Transportation CORE Feedback: Needs Assessments

---

Modify tools to include more diverse groups.

Conduct a large-scale survey of transportation needs of underserved communities.

Make equity analysis tools more accessible

Focus on moving people instead of cars; remove vehicle-oriented bias

Coordinate with other agencies to embed transit-related questions into their needs assessments...and/or to see data they've collected on this front

Incorporate analyses and data on housing, health, other related areas.

# Transportation CORE Feedback: Funding

---

Hold Real Estate Developers accountable for genuine contributions to public transit projects.

Develop a formal process for prioritizing transportation investments in historically redlined areas of Baltimore City.

Keep an eye out for federal funding. Especially with the infrastructure bill, there is federal funding that BMC could use.

Look for non-property tax sources of funding.

Focus on funding simple solutions to address safety in equity areas and other “low-hanging fruit” with immediate impacts.

Leverage funding from other agencies/depts whose success depends on equitable transit...schools? healthcare institutions?

# Transportation CORE Feedback: Public Participation

---

Compensate public participants (e.g., paid focus groups).

Engage with local nonprofits and community groups that are in touch with individuals.

Provide childcare at outreach events, and child engagement opportunities to get families involved.

Use outreach that is equitable for everyone. Balance online with in-person approaches.

“Nothing about us without us:” engage marginalized communities in developing solutions.

Part of the struggle in getting people involved is, once people mobilize to make change, ideas are vetoed and progress is slow. Challenge to keep people motivated.





# BRTB Technical Committee Ideas



# Technical Committee Ideas: UPWP

**Unified Planning Work Program:** *Think about advancing equity through UPWP-funded plans, studies, research, models, datasets and outreach addressing mobility, accessibility, connectivity, safety, and environmental issues.*

Gentrification research tools - how do transportation investments unintentionally foster displacement?

Bridge the gap between development patterns and transportation options... (from LRTP category)★

Evaluate the infrastructure/land use needs necessary for expanded transit service

Additional studies of separated paths on roads like US 40 and Rt. 1

Study electrification of short haul trucking /port traffic impact on respiratory illnesses (from LRTP category)

^^ and how can transportation agencies work with non transpo to support keeping people in their community

...(cont.) e.g., retail jobs located in suburban areas that don't pay well enough for employees to live in those areas

Evaluate trends in senior housing and their walkability and the impact that will have on the transportation network

Research the role of social and community vulnerability on evacuation behavior and risk.

How CAV adoption may impact equity (from Other category)

If we don't build enough walkable, mixed use, transit-accessible places then those places become prohibitively expensive.

Study ways that land development patterns make transit/ped/bike access challenging and potential solutions

Study on Land Banking + Transfer of Development Rights ★

Explore ways for community members to have more input on transportation policy at the local level (from PPP category) ★

A second bay bridge span (from Other category)

# Technical Committee Ideas: LRTP

**Long-Range Transportation Plan:** *Think about advancing equity in, for example, the indicators, data sources, modeling tools, and engagement processes for identifying long-range transportation needs, evaluating alternative solutions, and prioritizing projects.*

Overlay LRTP projects  
with VPI map



LRTP Projects should  
be more focused on  
granular projects.

Encouraging policies that  
build "rural villages" that  
foster community and  
accessibility (from TIP  
category)

Bridge the gap  
between development  
patterns and  
transportation options...



Continue developing EJ  
criteria as more  
information/research  
becomes available  
(from TIP category)

Waterfront  
remediation and  
development (from  
TIP category) ★

Connecting transit to  
rural communities  
(from TIP category)

...(cont.) e.g., retail jobs  
located in suburban  
areas that don't pay well  
enough for employees to  
live in those areas

Gentrification research tools -  
how do transportation  
investments unintentionally  
foster displacement? (from  
UPWP category)

Explore ways for community  
members to have more input  
on transportation policy at  
the local level (from PPP  
category) ★

Evaluate the  
infrastructure/land use  
needs necessary for  
expanded transit service  
(from UPWP category)

LRTP's should be  
much more focused  
on realistic funding



# Technical Committee Ideas: TIP

**Transportation Improvement Program:** *Think about advancing equity in, for example, policies and decision-making processes for prioritizing funds for projects that address different modes, geographic locations, or population groups.*

Encouraging policies that build "rural villages" that foster community and accessibility.

Waterfront remediation and development



Continue developing EJ criteria as more information/research becomes available

Connecting transit to rural communities



Explore ways for community members to have more input on transportation policy at the local level (from PPP category)



Analyze Spending by Jurisdiction and then within each jurisdiction by VPI area



# Technical Committee Ideas: PPP

**Public Participation Plan:** *Think about advancing equity by engaging the public and stakeholder groups in regional planning and decision making, considering the whole spectrum from the bottom-up [individual/ neighborhood/ local] and the top-down [federal, state, region] perspectives.*

Spanish Language  
Outreach Plan

Digital Billboards? (i.e.,  
advertise MPO  
engagement & info on  
highway billboards with  
programmable displays)

Explore ways for  
community members to  
have more input on  
transportation policy at  
the local level ★

Public Education Campaign  
(like Street Smart) made in  
Spanish, not just translated  
into Spanish (from LRTP  
category)





# Equity Scan Recommendations



# UPWP Recommendations



**DEVELOP A BRTB  
STANDING POLICY  
COMMITTEE ON EQUITY**



**ADOPT A REGIONAL  
EQUITY DEFINITION**



**CONDUCT A HISTORICAL  
ASSESSMENT**



**DEVELOP A  
DISPLACEMENT RISK  
ANALYSIS TOOL**

# LRTP Recommendations

---

DEFINE	DEFINE EQUITY FOR THE REGION
INCLUDE	INCLUDE SPECIFIC EQUITY PROJECT SCORING CRITERIA.
PRIORITIZE	PRIORITIZE THE CONNECTION BETWEEN LAND-USE AND TRANSPORTATION
CONDUCT	CONDUCT SCENARIO ANALYSIS ON VULNERABLE POPULATIONS
EXAMINE	EXAMINE DATA INACCURACIES IN ANALYSIS METHODS
EVALUATE	EVALUATE EXPANSION OF TRANSIT SERVICE IN THE REGION

# TIP Recommendations



**DEVELOP A FRAMEWORK FOR  
INCORPORATING EQUITY  
MEASURES INTO THE TIP  
DECISION-MAKING PROCESS**



**LEVERAGE EQUITABLE  
TRANSPORTATION INVESTMENTS  
THROUGH PRIVATE  
DEVELOPMENT**



# PPP Preliminary Recommendations



**CREATE RESOURCES  
FOR LEP  
POPULATIONS**



**CLARIFY MESSAGING  
ABOUT THE  
PLANNING PROCESS**



**MAKE TECHNICAL  
DOCUMENTS  
UNDERSTANDABLE**



**EXPAND EQUITY-  
RELATED DATASETS**



**BUILD AGENCY  
CAPACITY TO  
ADDRESS EQUITY**

# Synthesis of Vulnerable Population Characteristics & Desired Equity Outcomes

**Socio-economic characteristics:** Resilience 2050 goals specify the following cohorts of populations and types of individuals to consider when developing and evaluating progress toward equitable outcomes:

- Low-income households
- Minority households or people of color
- Persons with disabilities
- Older adults
- Limited English Proficiency (LEP) individuals
- Car-less individuals (people who cannot own and/or operate an automobile)
- People who have been historically underserved, marginalized, and adversely affected by persistent poverty and inequality.

# Desired Outcomes

- Ensure **fair distribution** of transportation investment benefits and impacts (e.g., reduce risks of displacement from gentrification; remove disproportionate transportation barriers faced by vulnerable populations; achieve optimal commute times for all travel modes)
- Expand **equitable access to opportunities** such as jobs, services, and essential destinations (e.g., ensure non-driving and low-income populations can accomplish daily activities by using affordable, reliable alternatives to automobiles and/ or by living within close proximity to everyday destinations, without investing more time and effort than those who can afford to drive their own cars or to live in walkable, transit-oriented communities).
- Increase the ability of BRTB, BMC, and agency partners to make **equitable decisions** (e.g., reduce “dominant culture” bias in analysis assumptions, communications, engagement techniques, and decision-making norms)





# Group Discussion