

# Approved Bike-Ped Master Plan



BRTB  
November 26, 2019

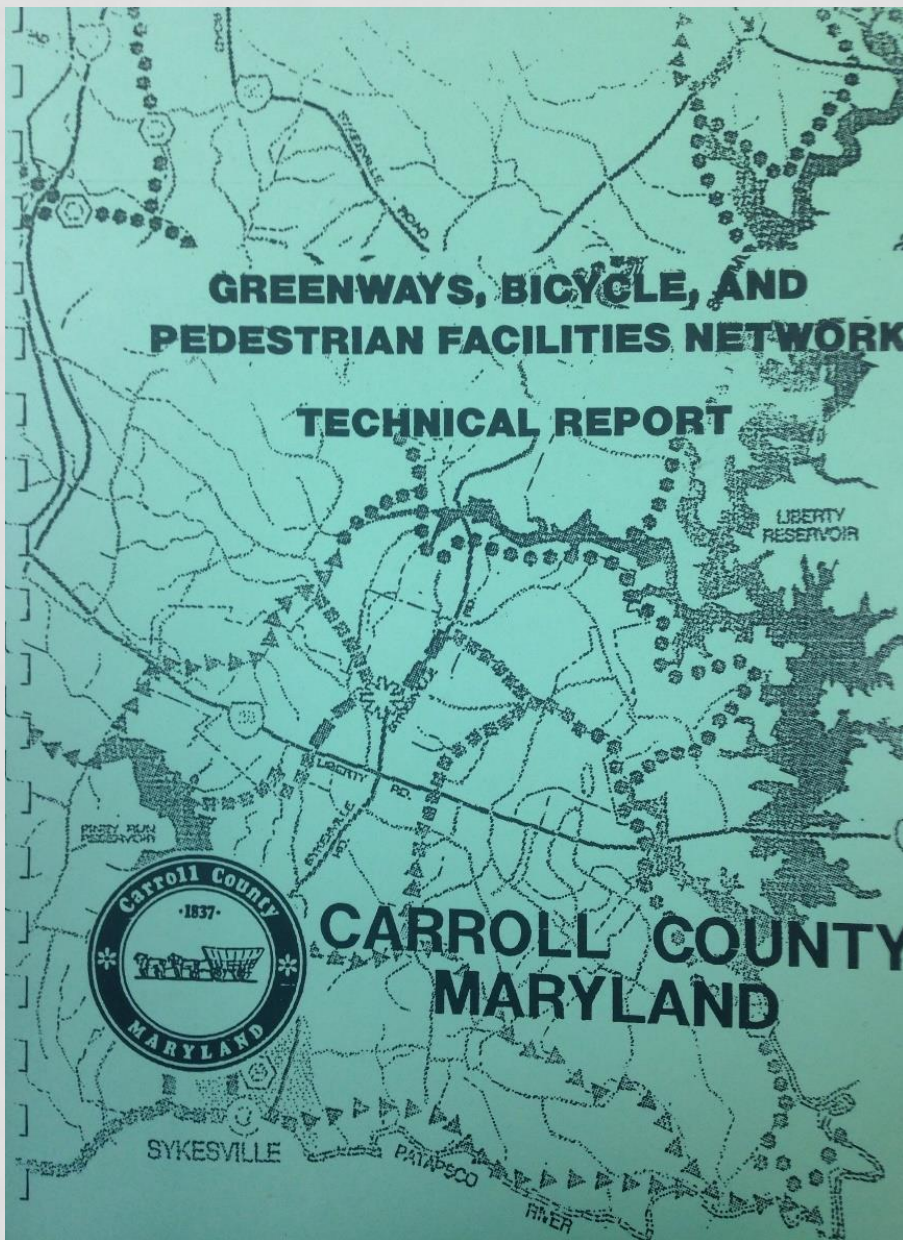
# Bicycle-Pedestrian Master Plan *2019*



Planning Better Paths to Carroll's Future

Carroll County, Maryland

Accepted by Carroll County Planning & Zoning Commission May 29, 2019



***FREEDOM***

***BICYCLE ~***

***PEDESTRIAN***

***MASTER PLAN***

***& ASSESSMENT***

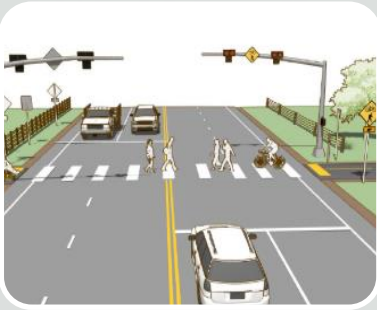


*Planning and Zoning Commission*

*Certified*

*February 18, 2014*

# PLAN GOALS



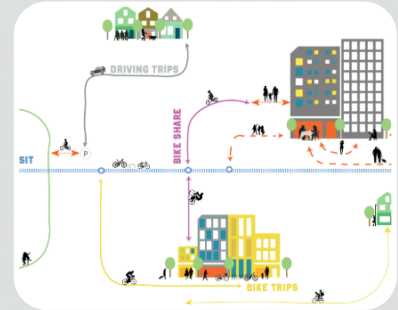
Identify  
existing  
infrastructure,  
and key  
connections  
and  
destinations



Support  
healthy, safe,  
and livable  
communities



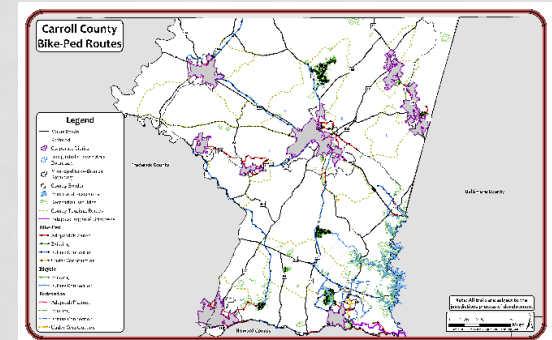
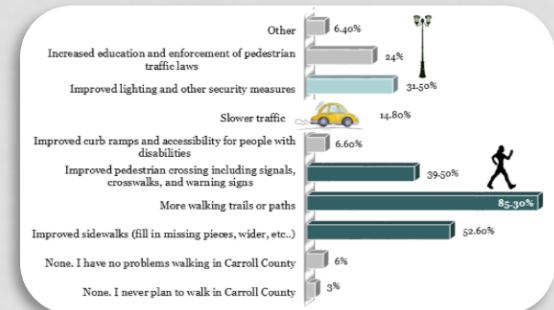
Bring  
economic  
benefits to our  
community



Emphasize the  
importance of  
walking and  
biking in all  
planning and  
development  
processes

# PROCESS

- Surveys
  - January 2016 – 50 questions – 822 responses
  - November 2016 – <100 responses
- Municipal input
- Stakeholder input
- Mapping
- Outreach
  - March 2017 citizen outreach meeting
  - December 2017 pop-up event
- Chapters
  - PC distribution
  - Agency comment
  - PC acceptance



# MILES OF PEDESTRIAN & BICYCLE INFRASTRUCTURE

	Existing	Under Construction	Adopted / Planned	Future
County	47.8	6.6	15.7	15.9
Hampstead	7.3	-	2.7	0.2
Manchester	-	-	1.3	-
Mount Airy	2.1	-	15.4	1.4
New Windsor	0.3	-	3.1	-
Sykesville	4.6	-	8.5	1.5
Taneytown	0.9	-	10.7	3.1
Union Bridge	2.2	-	2.1	-
Westminster	6.4	-	0.9	0.7
Municipal	23.8	-	44.7	6.9
Total	71.6	6.6	60.4	22.8



# Carroll County Bike-Ped Routes

## Legend

- Major Roads
- Railroad
- Sidewalk
- Corporate Limits
- Municipal Growth Area Boundary
- County Border
- Ponds and Reservoirs
- County Tourism Routes
- Patapsco Regional Greenway

### Bike-Ped

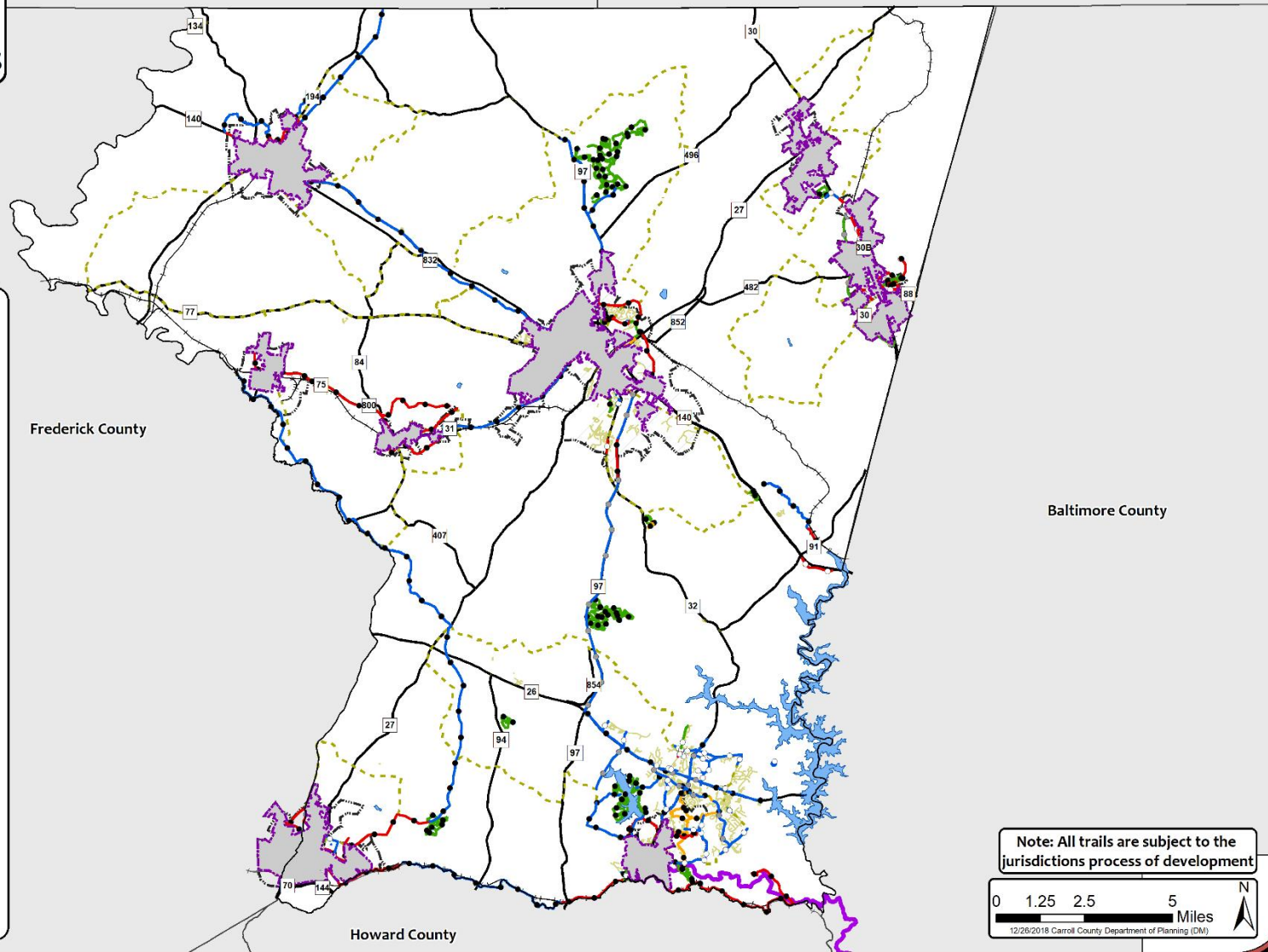
- Adopted/Planned
- Existing
- Future Connection
- Under Construction

### Bicycle

- Adopted/Planned
- Existing
- Future Connection

### Pedestrian

- Adopted/Planned
- Existing
- Future Connection
- Under Construction



# Sykesville Bike-Ped Routes

## Legend

- Public Schools
- Private Schools
- Crosswalk
- Sidewalk
- Roads
- Railroad
- Streams
- Corporate Limits
- Growth Area Boundary
- County Border
- Ponds and Reservoirs
- Recreation Facilities
- Patapsco Regional Greenway
- County Tourism Routes

### Bike-Ped

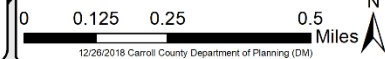
- Adopted/Planned
- Existing
- Future Connection
- Under Construction

### Bicycle

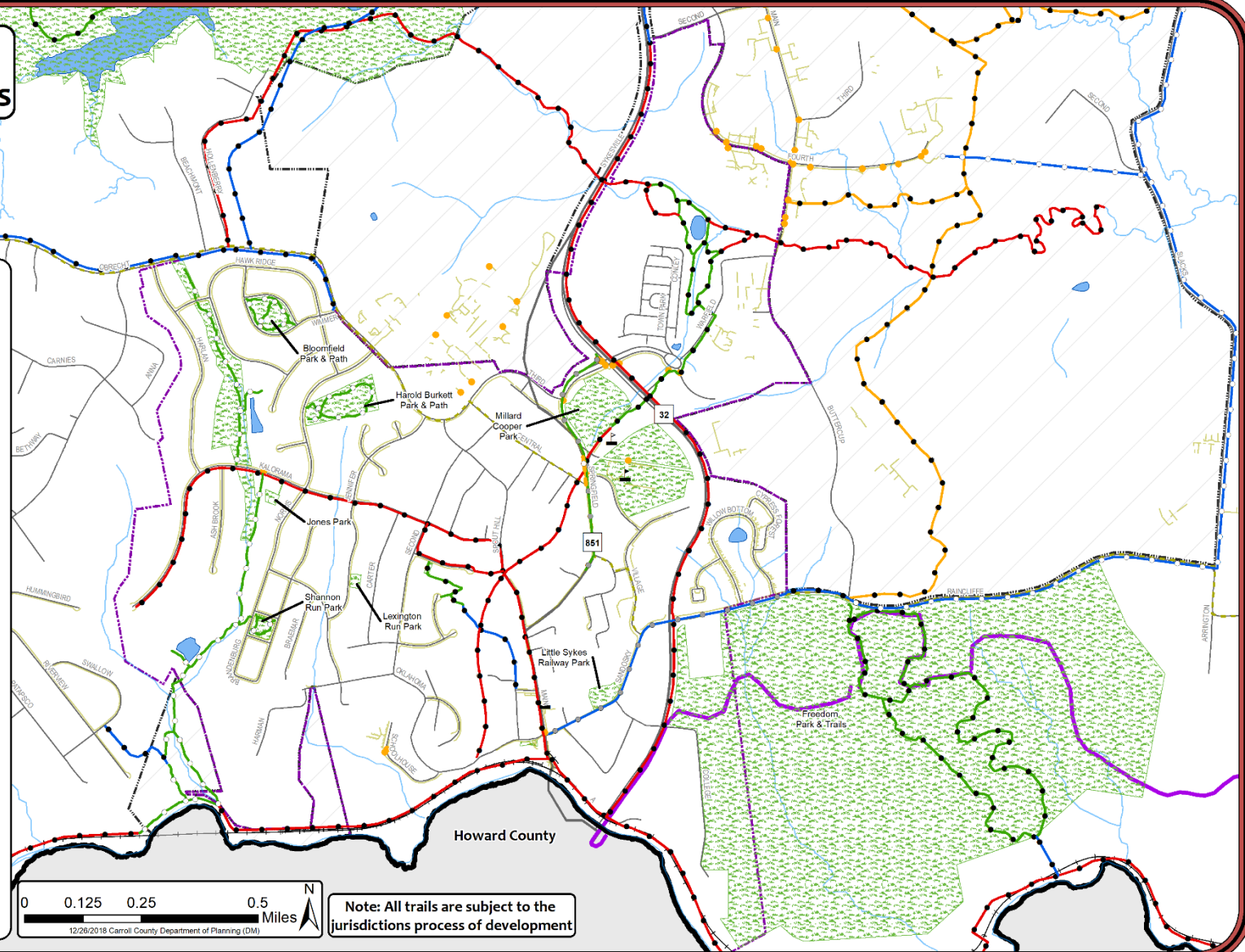
- Existing
- Future Connection

### Pedestrian

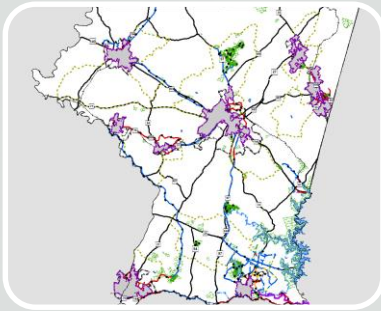
- Existing
- Future Connection
- Under Construction



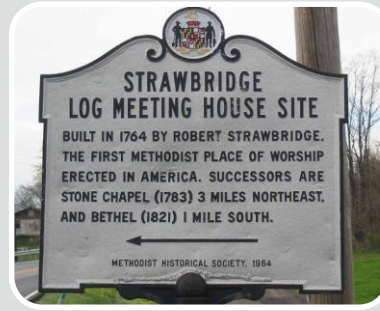
Note: All trails are subject to the jurisdictions process of development



# RECOMMENDATIONS



Consider additional connections which are not adopted in master/comprehensive plans



Support economic development through tourism



Promote a positive quality of life through improved bike-ped infrastructure and safety education



Improve and enhance transportation options



# CURRENT PROJECTS

- ArcGIS Online – mapping existing and adopted/planned routes
- Expansion of Deer Park Trail
- Rail Trail – Taneytown to MD/PA line



# QUESTIONS?

CARROLLBIKEPEDPLAN.ORG

Clare Stewart  
Department of Planning  
[ccplanning@ccg.carr.org](mailto:ccplanning@ccg.carr.org)  
410-386-5145

