

**BRTB Bicycle and Pedestrian Advisory Group (BPAG)**  
**March 17, 2021**

# **MDOT MTA Patapsco Ave Ped/Bike Bridge Phase 1**



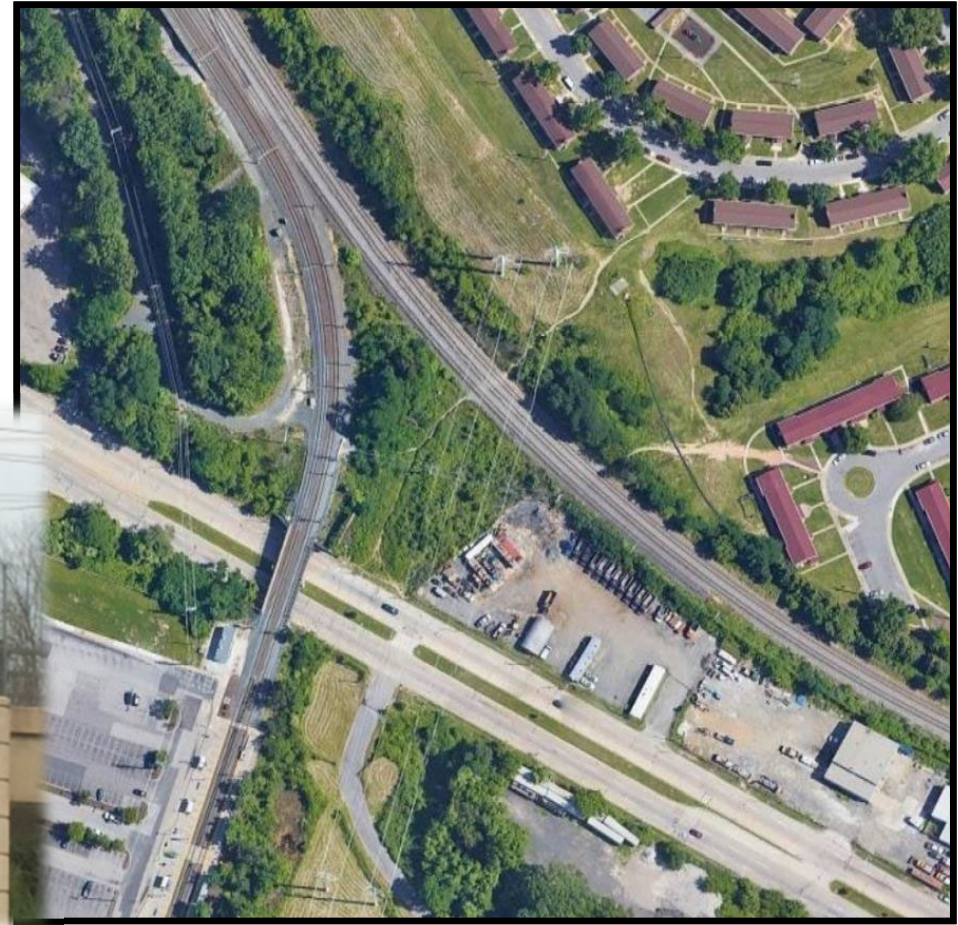
# Agenda

1. Recap Study
2. Design Status
3. Design Elements
4. Next Steps
5. Questions

# Recap

## Crossing Patapsco Ave: A Safety and Trail Connectivity Issue

- Longstanding challenge of no safe pedestrian connection between Cherry Hill neighborhood and Patapsco Light Rail
- Over 300 pedestrians have been observed walking across the Light Rail Bridge to get to the Station daily





## Crossing Patapsco Ave: A Safety and Trail Connectivity Issue

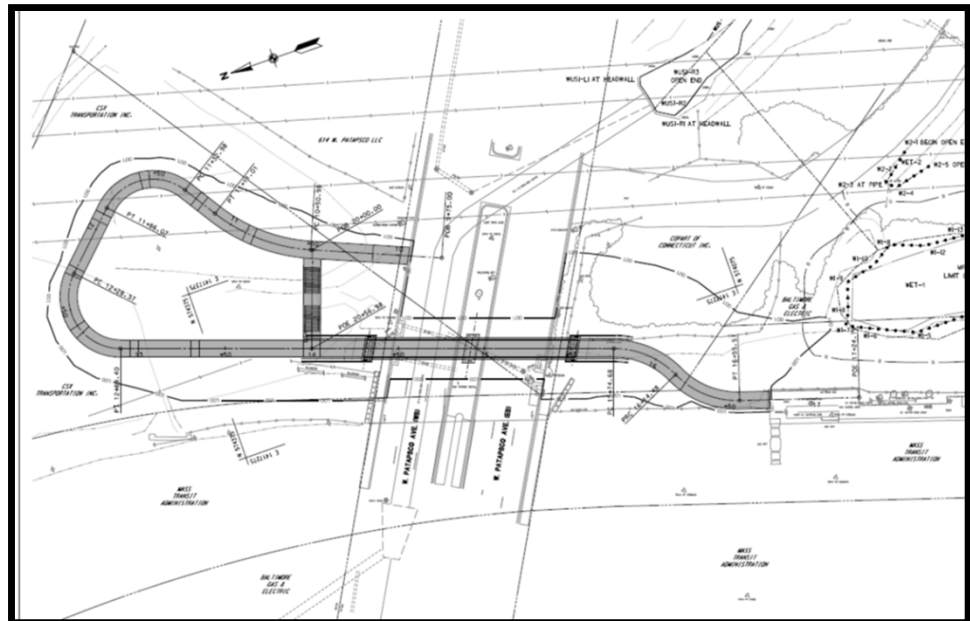
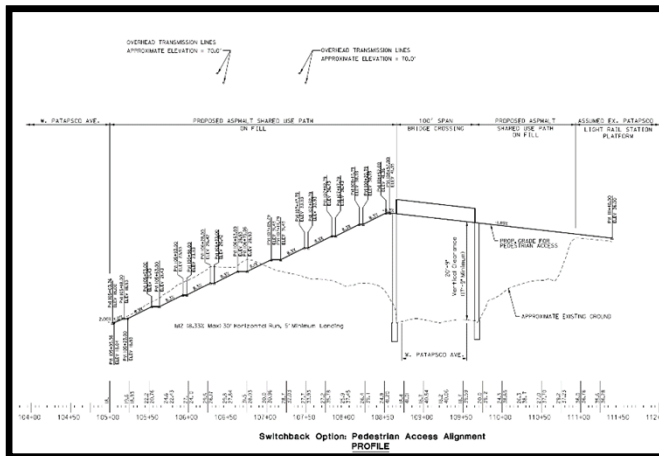
- 
- A detailed map of Baltimore, Maryland, focusing on the Patapsco River and its surrounding urban areas. The map shows the river flowing from the northwest towards the southeast, with several bridges crossing it. Key neighborhoods and landmarks labeled include Saint Agnes, Violetville, Morrell Park, West Baltimore, Cherry Hill, South West Area Park, Patapsco, and the BWI Business District. Major roads such as I-95, I-695, I-83, and I-895 are clearly marked. The map also shows the Patapsco River and its tributaries, as well as various parks and recreational areas.



[illegible]

# Design Status

- Draft Environmental Site Assessment Completed January 2023
- Design Study Report completed February 2023
- Design Study review and decision making meeting held March 2023
- Perform Soil Borings in May 2023
- 65% Submittal August 2023

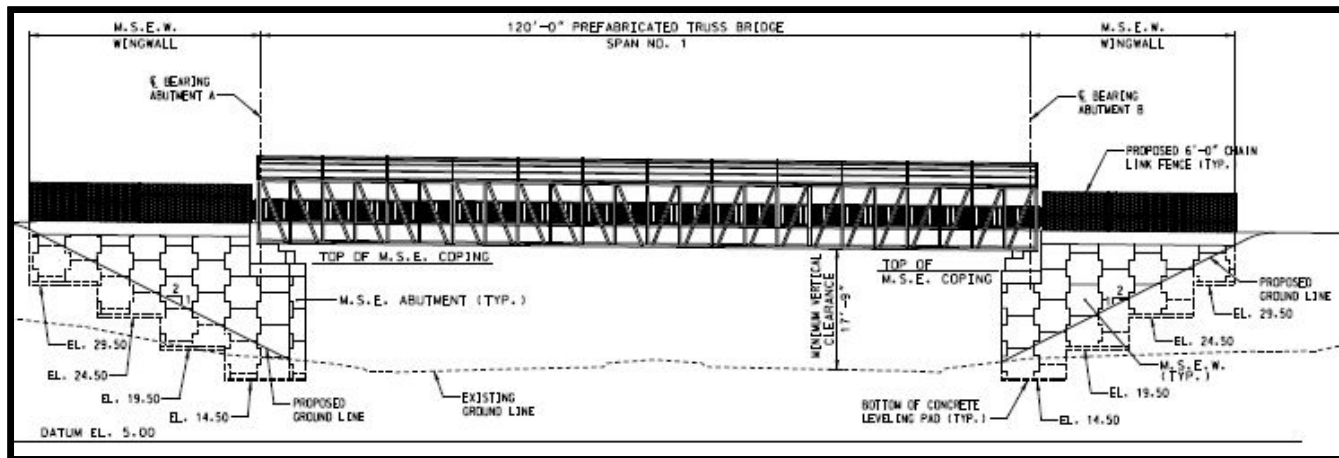




# Design Elements

## Single Span Bridge

- 120 foot span prefabricated truss bridge
- 2 abutments set outside Baltimore City Right of Way (survey under way – assumed 100' wide) at locations compatible with proposed BCDOT improvements for Patapsco Avenue



# Design Elements

## Single Span Bridge

- Adjacent to light rail abutments – separate structures
- Similar total cost when compared to two span option but lower impact on right of way





# Design Elements

## Aluminum Finish

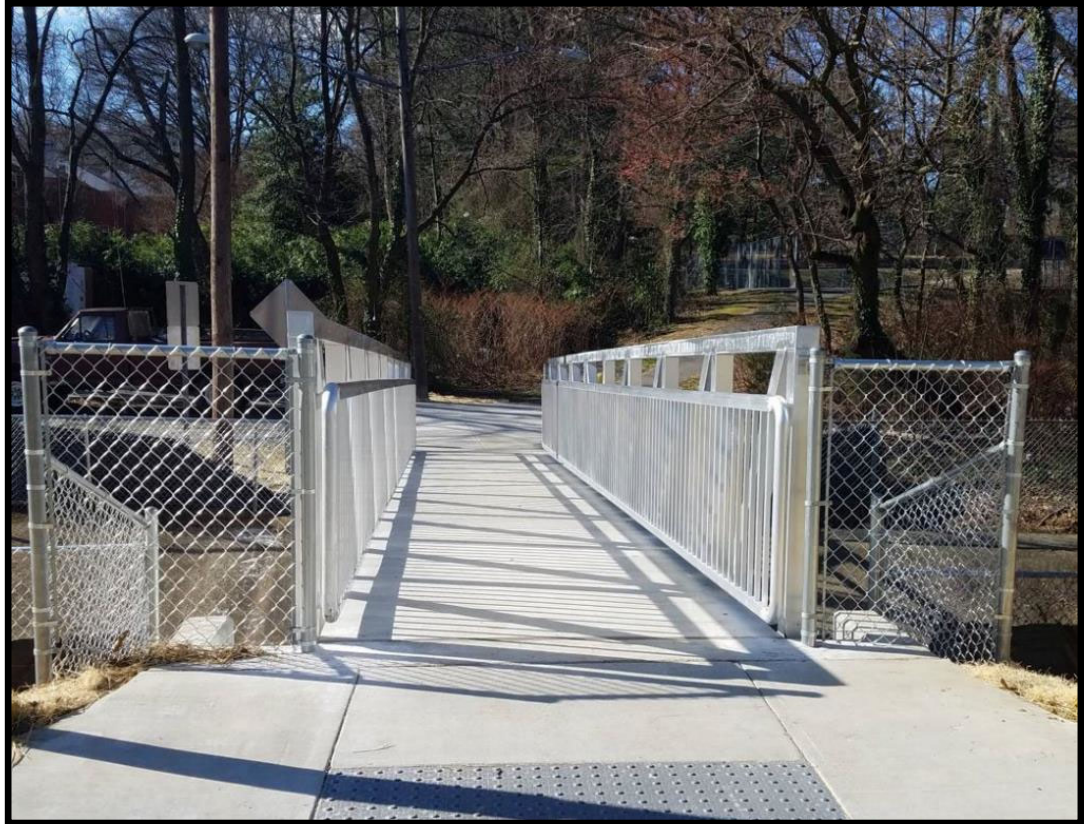
- Lighter – reduce structural support costs and size
- Corrosion resistant
- Lower maintenance



# Design Elements

## Concrete Decking

- ADA Compatible
- Slip resistant
- Easier Maintenance
- No “fall through” area over traffic



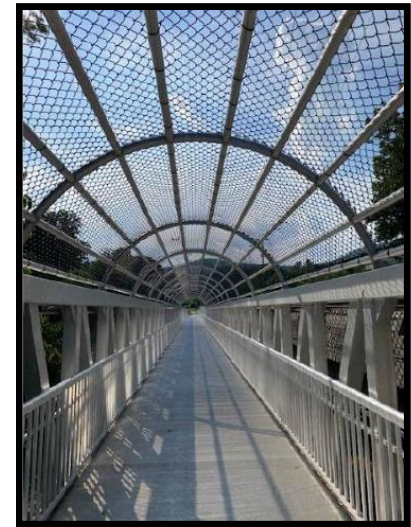
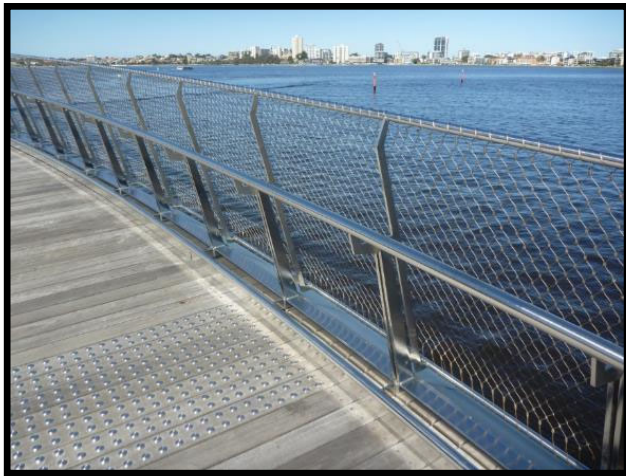
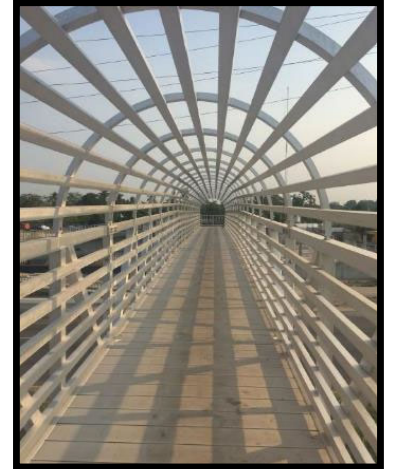


# Design Elements

## Pedestrian Enclosure - options

- Needed to protect cars from items thrown from bridge
- Helps prevent pedestrians from falling or jumping
- Can provide shading

*Once 30% plans are received a public meeting will be scheduled and this will be presented and discussed.*





## Next Steps

- Complete Soil Borings (May 2023)
- Public Engagement and Design Decisions (June-July 2023)
- Begin Property Acquisition (June 2023)
- Complete Design (July 2024)
- Complete Property Acquisition (2025)
- Complete Permitting and Bid Documents (2025)
- Bid and Build Project

## Questions

### Contact Information:

Virginia Olyniec, PE  
Project Manager  
Maryland Environmental Service

### Maryland Transit Administration

Office of Engineering & Construction  
6 Saint Paul Street, 6<sup>th</sup> Floor, Baltimore MD 21202

**Office:** 410-767-3856    **Fax:** 410-333-0378

[volyniec@mdot.Maryland.gov](mailto:volyniec@mdot.Maryland.gov)

