



Patapsco Regional Greenway (PRG) Updates

BPAG

May 18, 2022



Agenda

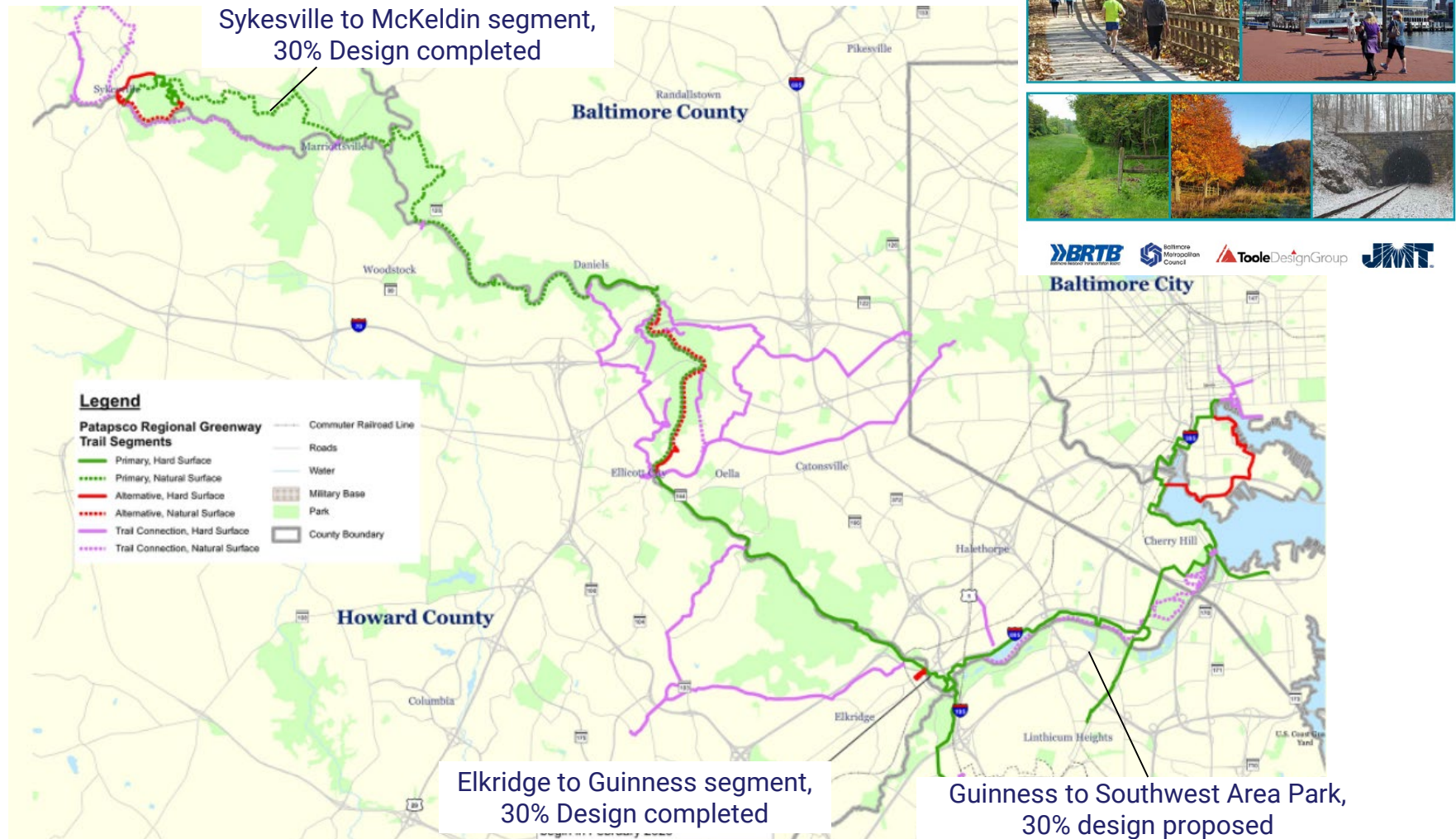
- Patapsco Regional Greenway (PRG) Plan
- Elkridge to Guinness Segment
- Sykesville to McKeldin Segment
- Guinness to Southwest Area Park Segment
- Connecting Trail: Baybrook Connector
- Next Steps

PRG Plan

- The [Patapsco Regional Greenway Plan](#) was approved by the Baltimore Regional Transportation Board (BRTB) in 2017
- The Plan maps the main alignment of a 40-mile greenway
- Connecting Sykesville in Carroll County to the Baltimore Inner Harbor and traversing the Patapsco Valley in Anne Arundel, Baltimore, and Howard Counties
- Parts of the 10-12 foot wide shared-use trail are already constructed and open for use
- Remaining segments will be designed and constructed based on jurisdictional priorities and funding availability

PRG Plan

THE PATAPSCO REGIONAL GREENWAY



Elkridge to Guinness Segment



Elkridge to Guinness segment,
30% Design completed

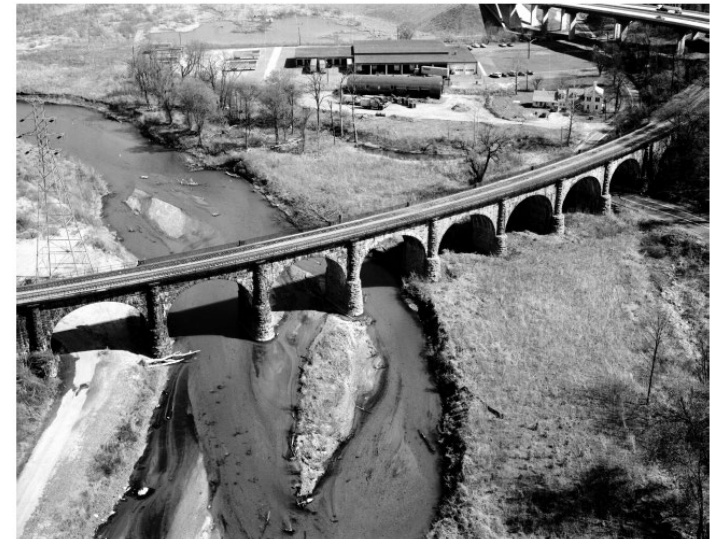
Elkridge to Guinness Segment

- 30% design completed in 2021
- Sponsored by Howard County and Baltimore County
- Connects Patapsco Valley State Park, Main Street in Elkridge, and the Guinness Open Gate Brewery
- Three alternative alignments studied and presented to public



Elkridge to Guinness Segment

- **Patapsco Route, Modified selected**
 - Length: 1.8 miles
 - Cost Range: \$2.5 – \$4.2M
 - Starts at the existing underpass close to the Guinness Open Gate Brewery via the existing power line maintenance road
 - Brings visitors into Historic Elkridge via a bridge over the Patapsco River
 - Calls for changing Main St. to a one-way road to provide sufficient space for a separated bike lane through Elkridge and across US 1 via the signalized intersection at Levering Avenue before crossing I-895 into Patapsco Valley State Park

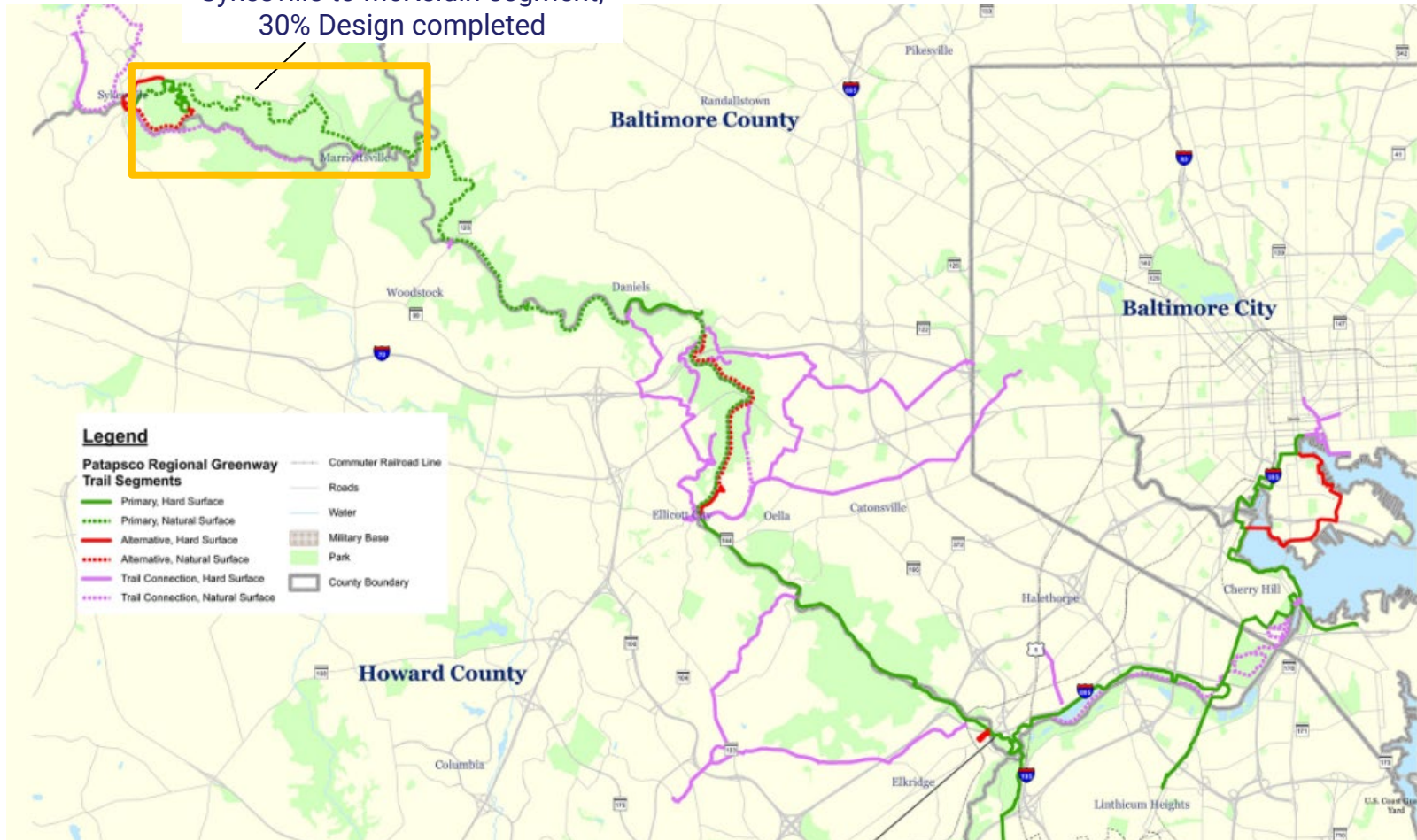


Elkridge to Guinness Segment



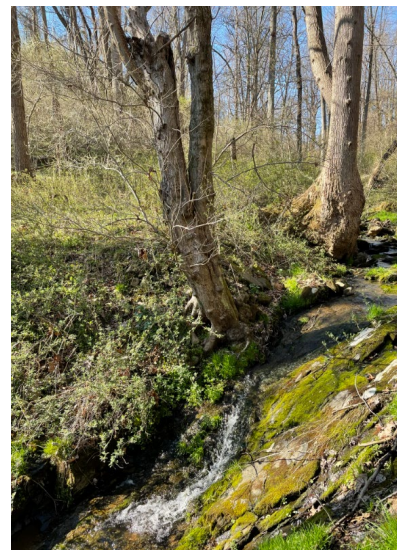
Sykesville to McKeldin Segment

Sykesville to McKeldin segment,
30% Design completed



Sykesville to McKeldin Segment

- 30% design completed in 2022
- Sponsored by Carroll County
- Connects the City of Sykesville to/through Patapsco Valley State Park
- Four alignments studied and presented to the public

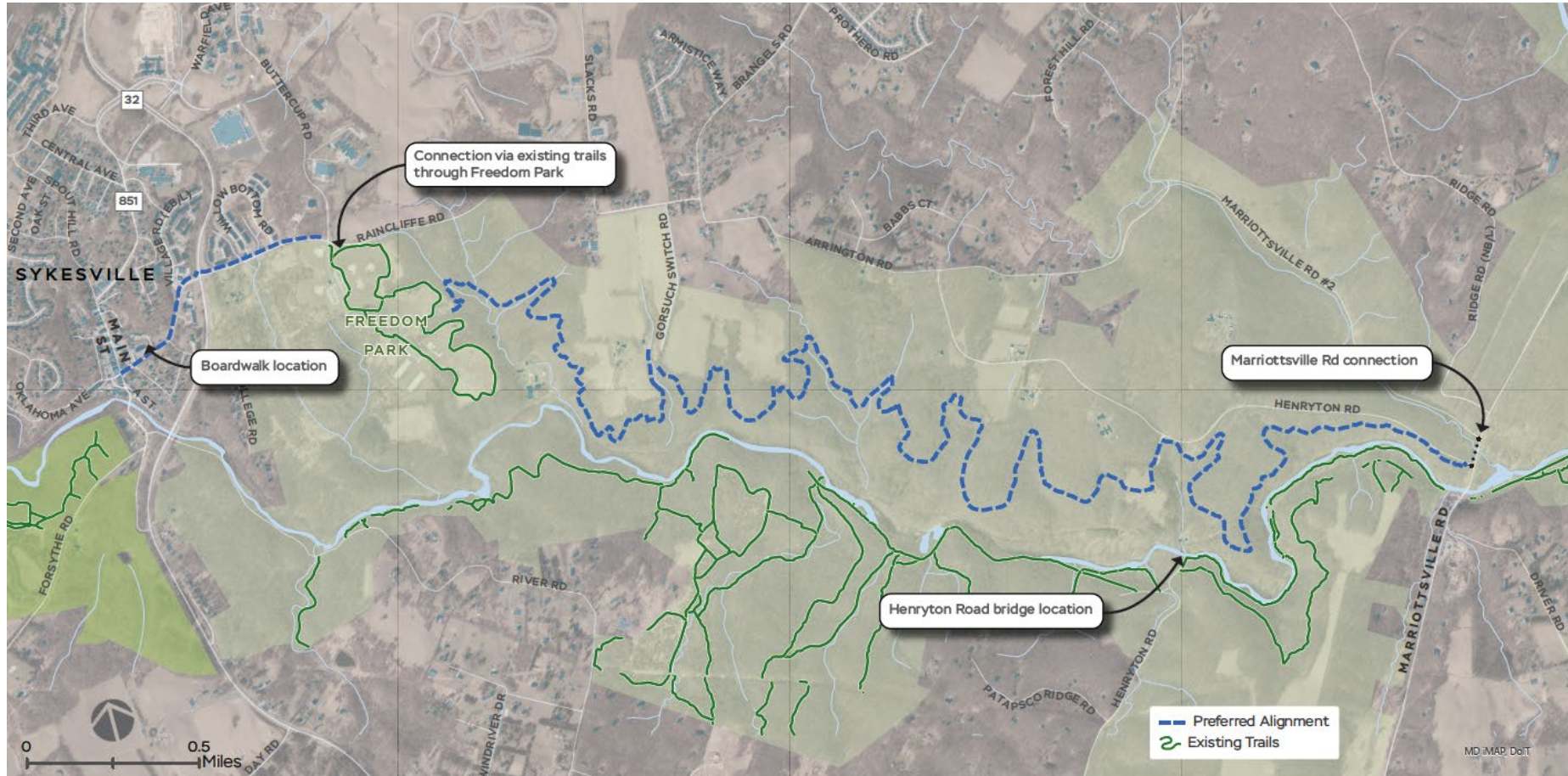


Sykesville to McKeldin Segment

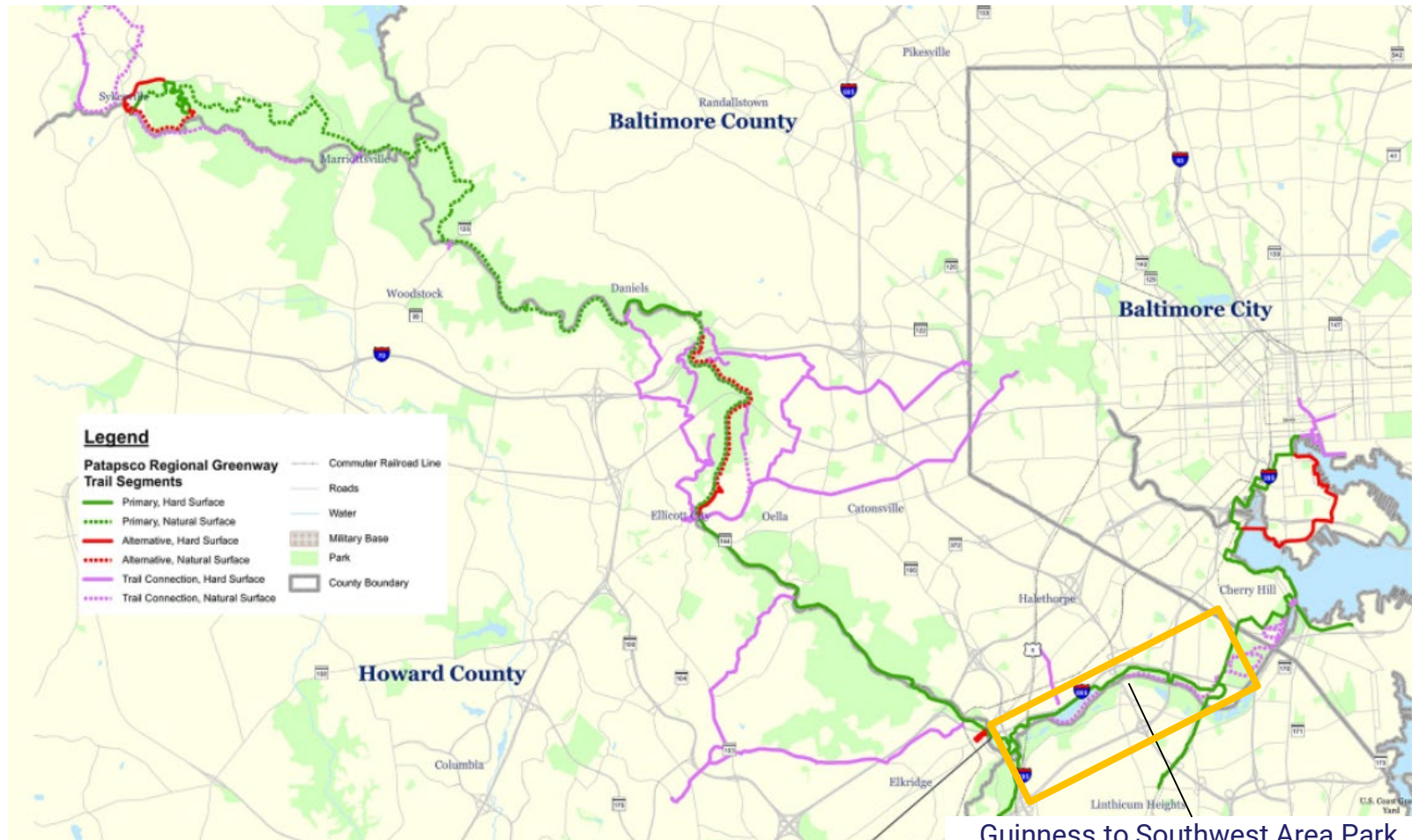
- Two selected alignments
- Sykesville to Freedom Park
 - Length: 0.8 miles (0.4 miles new)
 - Estimated Cost: \$2.7M
 - Shared use path, sidewalk, boardwalk
 - All intersections will be upgraded to provide safer, more comfortable crossings
- Freedom Park to McKeldin
 - Length: 7.5 miles
 - Cost Range: \$500 – \$660K
 - Natural surface trail, bridges, boardwalk
 - Includes intersection upgrades and potentially a high-visibility crossing



Sykesville to McKeldin Segment



Guinness to Southwest Area Park Segment



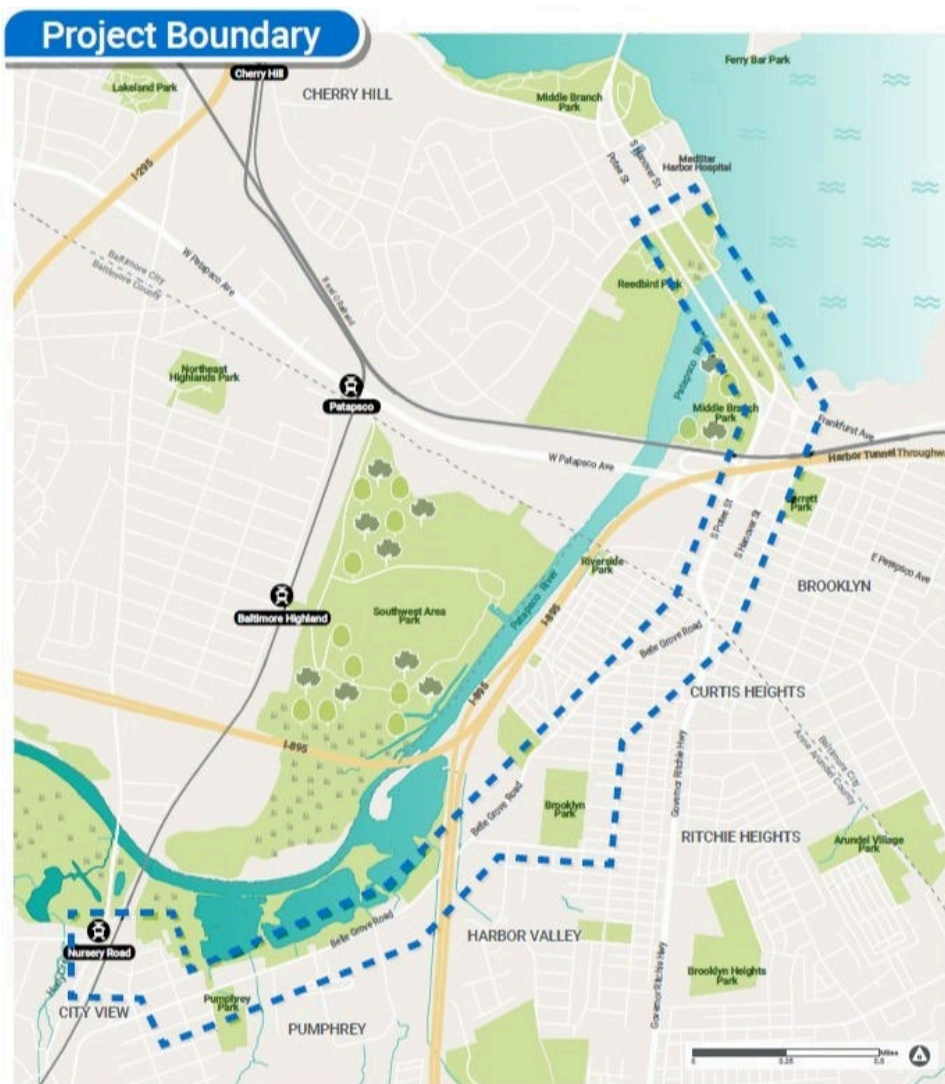
Guinness to Southwest Area Park,
30% design proposed

Guinness to Southwest Area Park Segment

- RFP for 30% design approved by Technical Committee
- Sponsored by Baltimore County
- Connects Guinness Open Gate Brewery to Southwest Area Park
- Coordination with MDOT MTA to connect to Patapsco Light Rail Station
- Approximate length: 6.4 miles
- Shared use path, boardwalk, bridge, potential high-visibility crossings



Connecting Trail: Baybrook Connector



- Connects Nursery Road Light Rail Station to the Middle Branch Trail
- Located in Baltimore City and Anne Arundel County
- Approximate length: 4 miles
- Shared use path, separated bicycle lane, bicycle boulevard
- 10% design completed, managed by Greater Baybrook Alliance

Next Steps

- Guinness to Southwest Area Park segment 30% design
- Develop publicly available interactive map of PRG Plan and progress
- Fiscal year 2023 UPWP project for 30% design
- Continued coordination with jurisdictions and community partners

Page 10 of 10

410.732.0500 x1008 | cmingus@baltometro.org | www.baltometro.org

