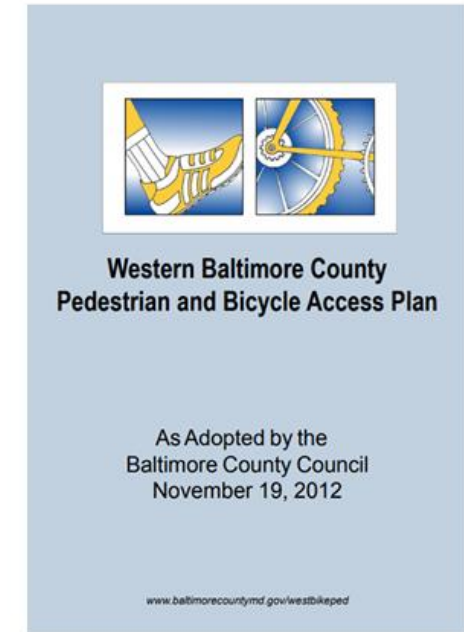
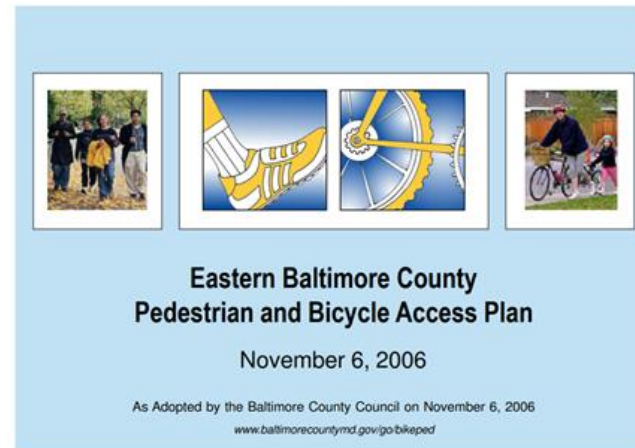


Baltimore County Bicycle and Pedestrian Master Plan Update

Project Background & Purpose

Project Background

- Update the Eastern and Western Pedestrian and Bicycle Access Plans
- Create of a countywide active transportation plan
- Respond to growing concerns related to motorized vehicle traffic congestion and public health
- Provide County on-road bikeway, trail, and greenway improvement strategies
- Conduct a Complete Street Inventory + develop policy recommendations

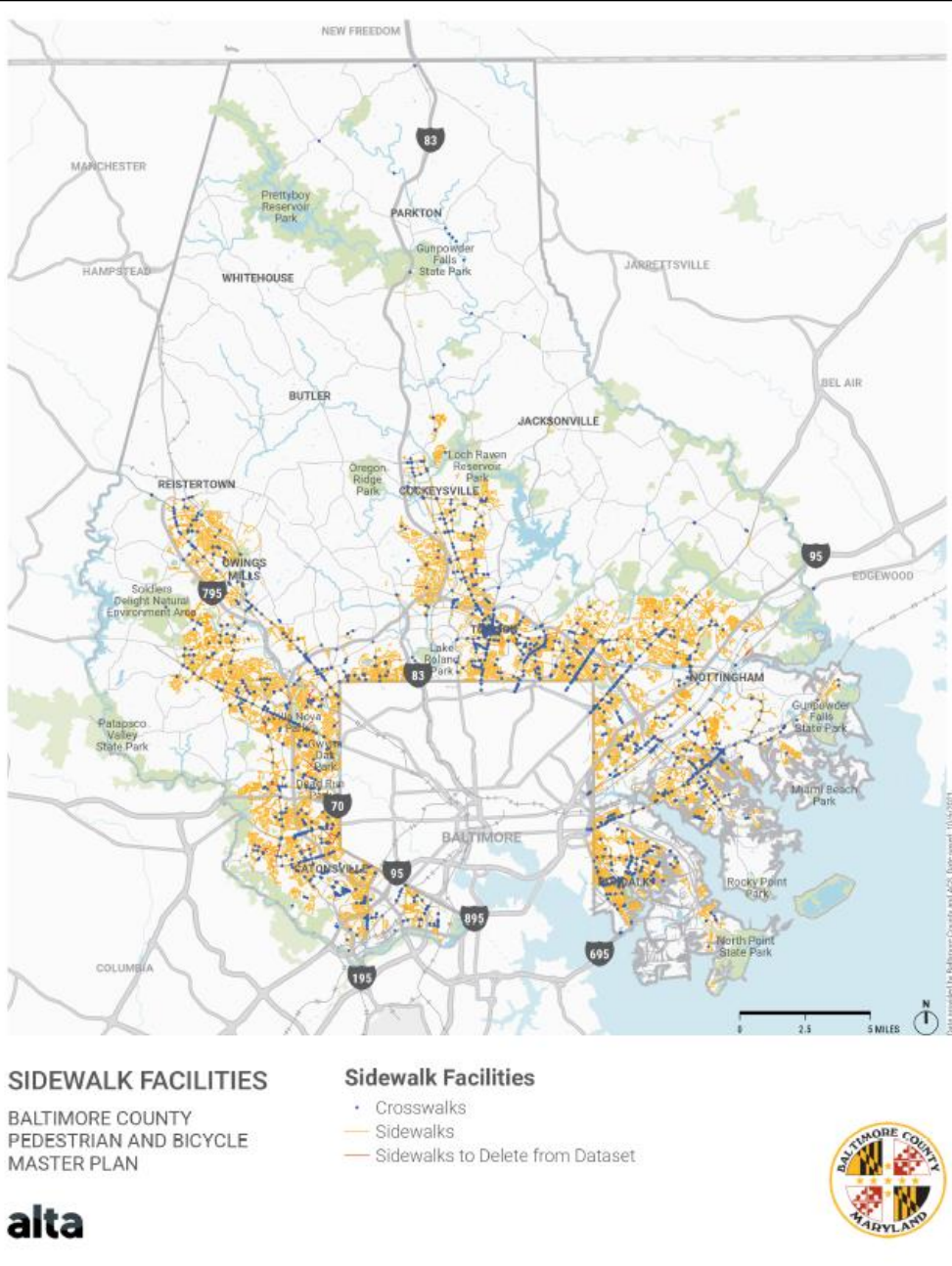


Existing Conditions – Key Findings



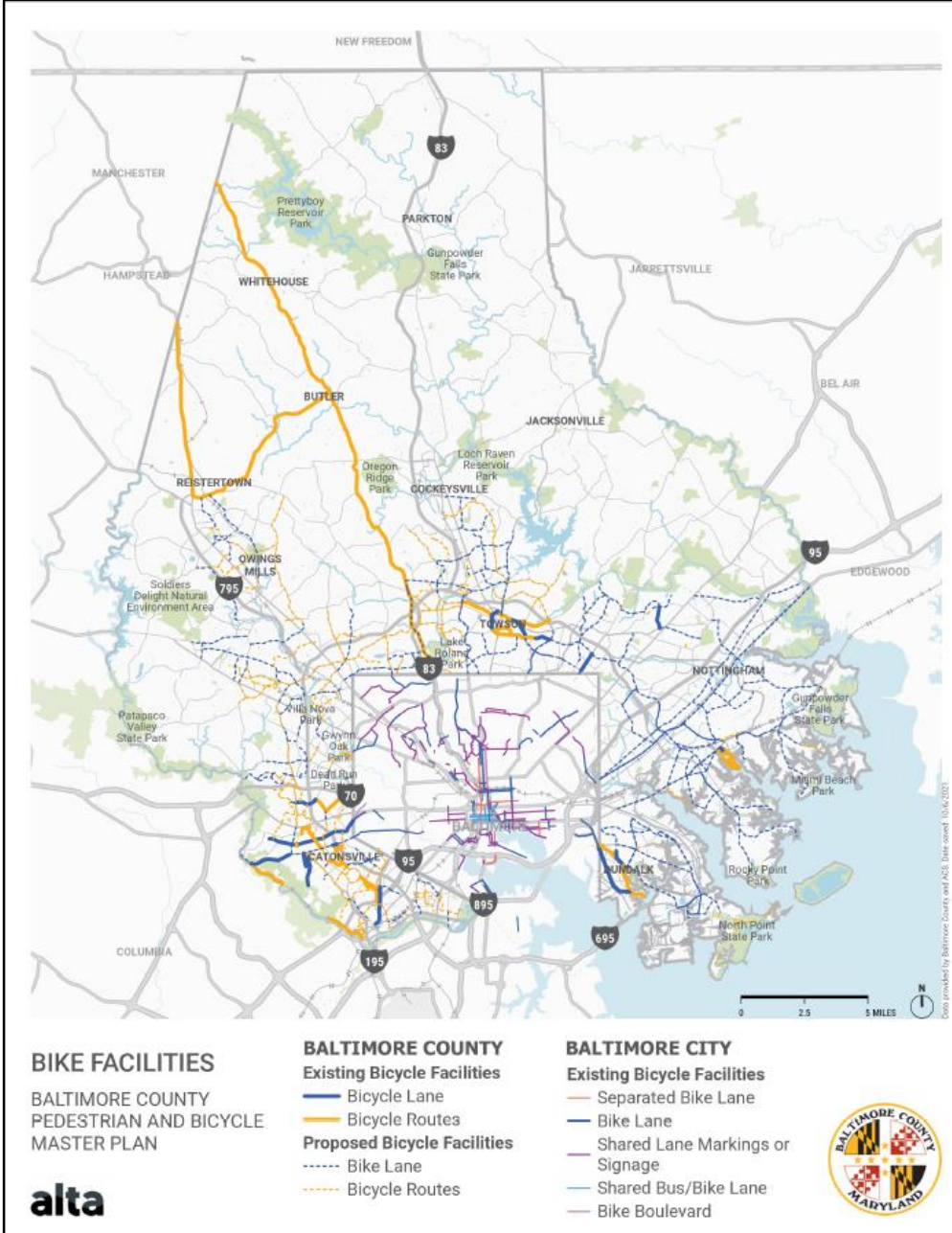
Existing Sidewalk Network

Facility Type	Total Mileage
Existing Sidewalks	2,449 centerline miles



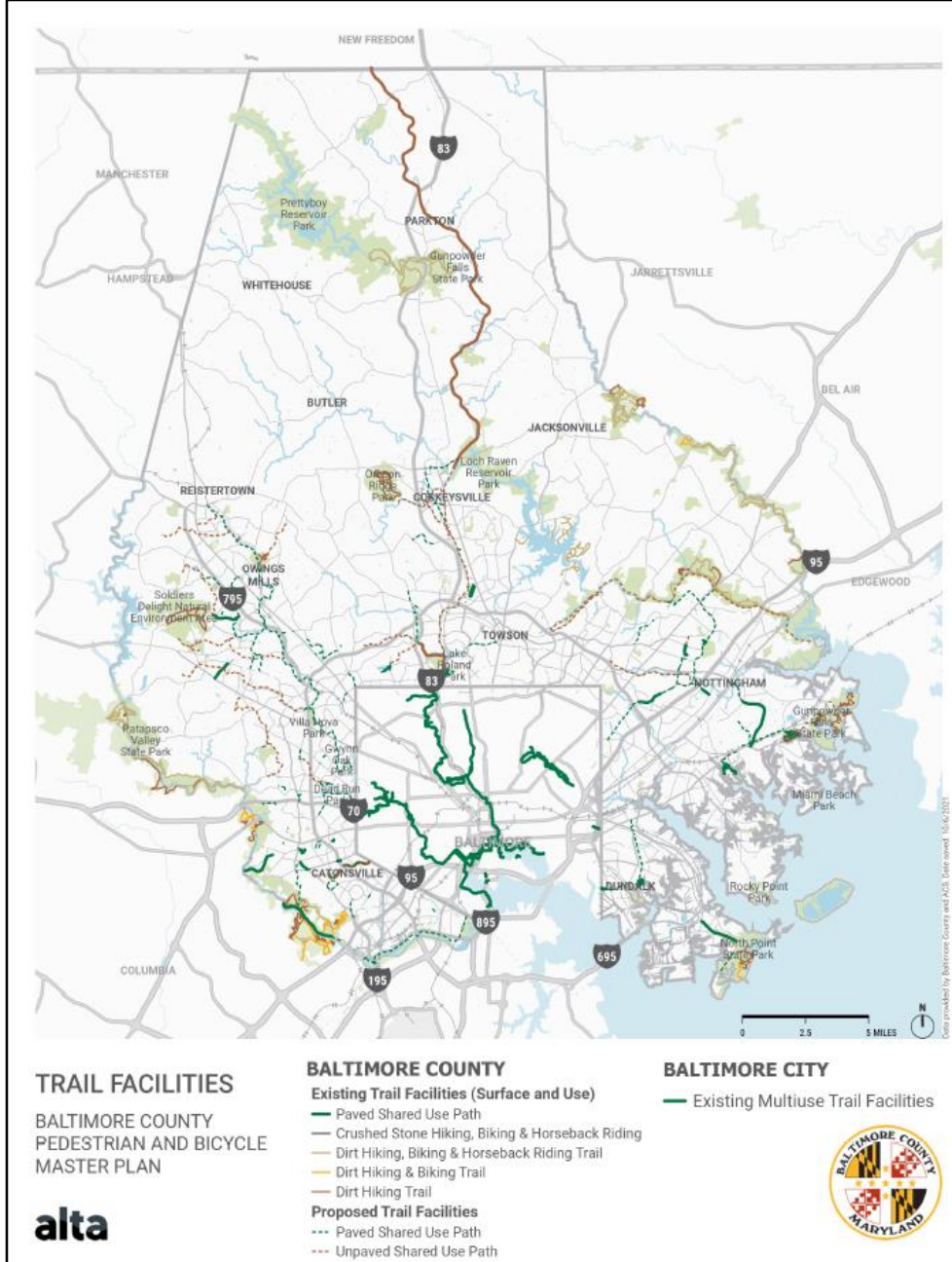
Existing On-Road Bikeway Network

Facility Type	Total Mileage
Proposed Bicycle Lanes	271 miles
Proposed Bicycle Routes	124 miles
Existing Bicycle Lanes	24 miles
Existing Bicycle Routes	62.5 miles



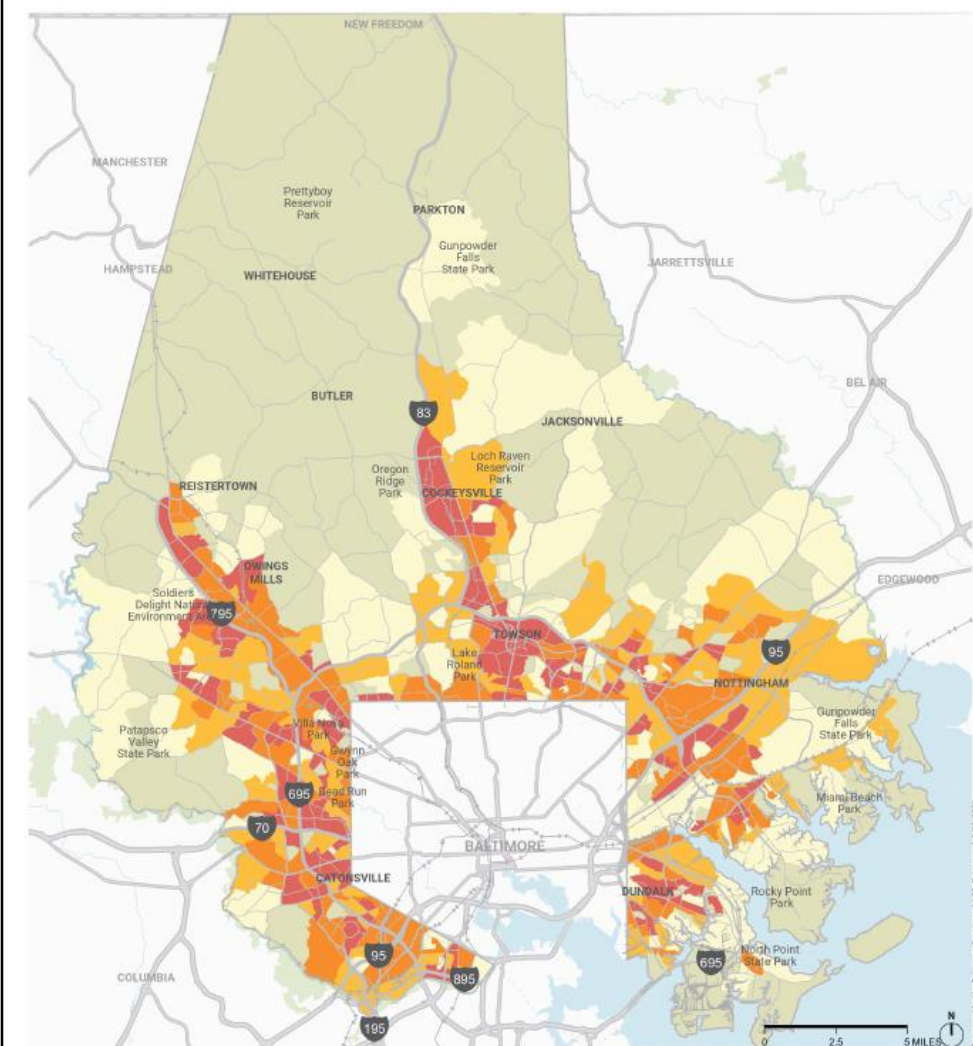
Existing Trail Network

Facility Type	Total Mileage
Proposed Unpaved Shared Use Path	72.4 miles
Proposed Paved Shared Use Path	84.8 miles
Existing Unpaved Shared Use Path	25.9 miles
Existing Paved Shared Use Path	18.0 miles



Demand Analysis

Category	Weight
Live: Where people live	10 / 70 pts
Work: Where people work	10 / 70 pts
Play: Where people recreate	10 / 70 pts
Shop: Where people shop	10 / 70 pts
Learn: Where people attend school / educational facilities	10 / 70 pts
Transit: Where people access public transportation	10 / 70 pts
Community Services: Where people access community services	10 / 70 pts



DEMAND ANALYSIS
BALTIMORE COUNTY
PEDESTRIAN AND BICYCLE
MASTER PLAN

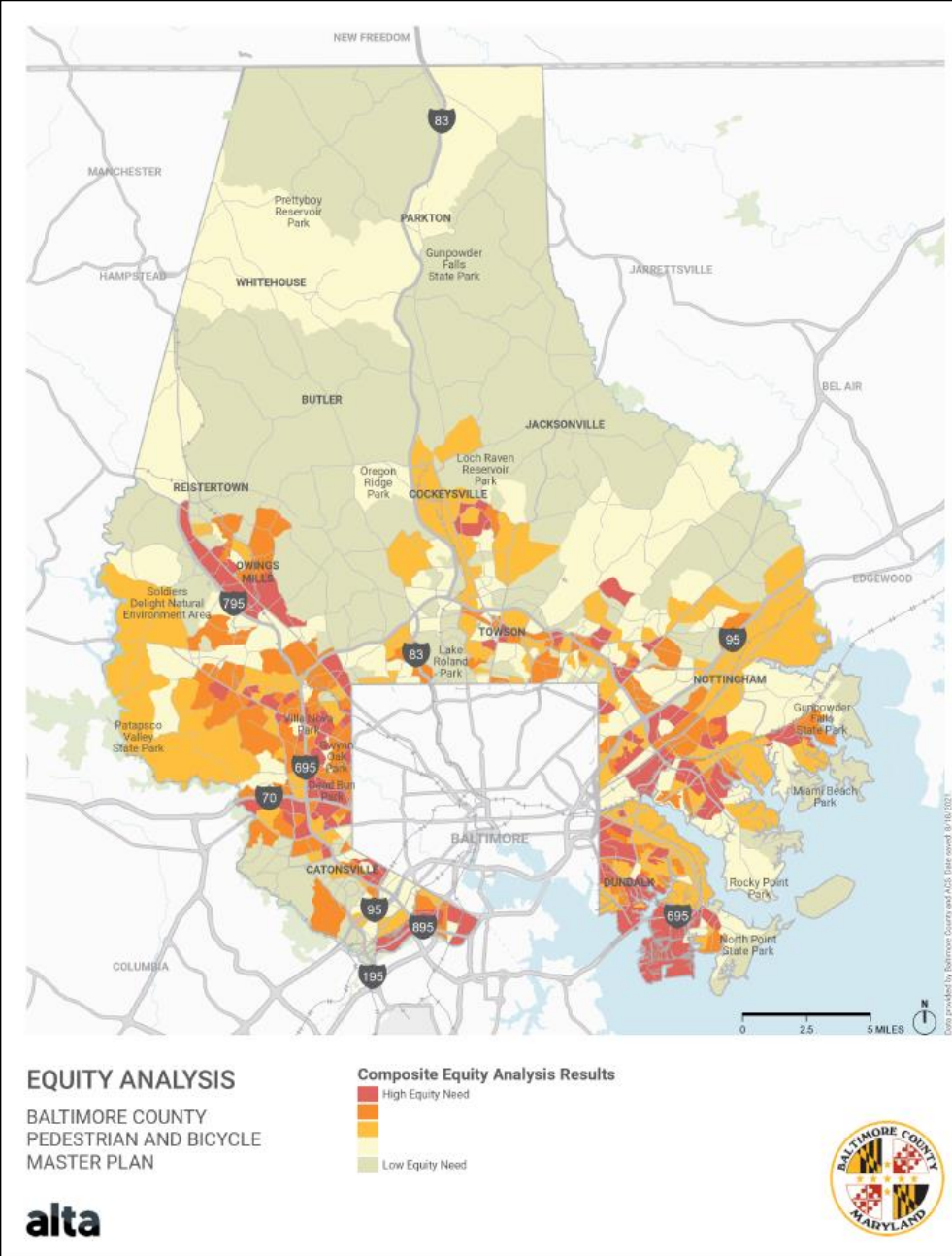
alta

Composite Demand
■ High Demand
■ Medium Demand
■ Low Demand

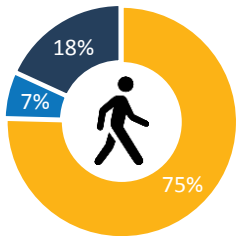
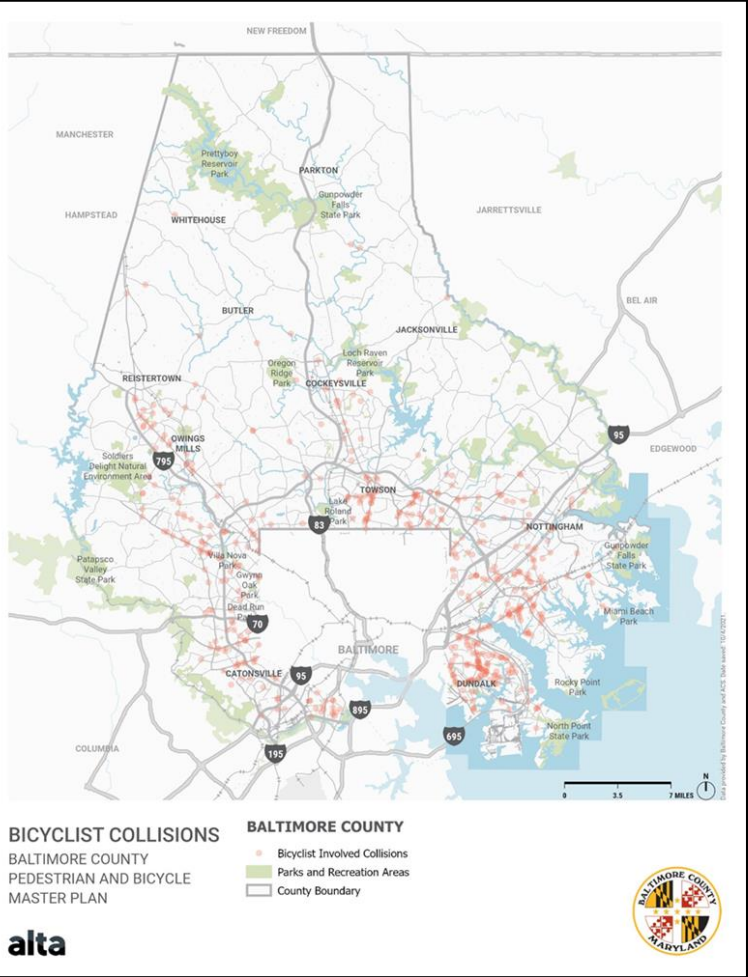


Equity Analysis

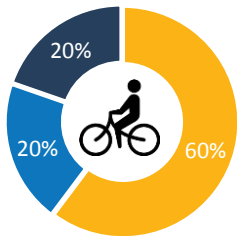
Category	Indicator	Weight
Race	People of color	10 / 70 pts
Children	Under 18 years old	10 / 70 pts
Senior Citizens	Over 64 years old	10 / 70 pts
Linguistic Isolation	Does not speak English well or at all	10 / 70 pts
Educational Attainment	No high school diploma	10 / 70 pts
Income	200% above poverty level	10 / 70 pts
Commute	No access to a motor vehicle	10 / 70 pts



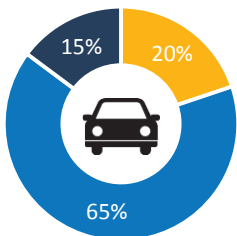
Safety Analysis



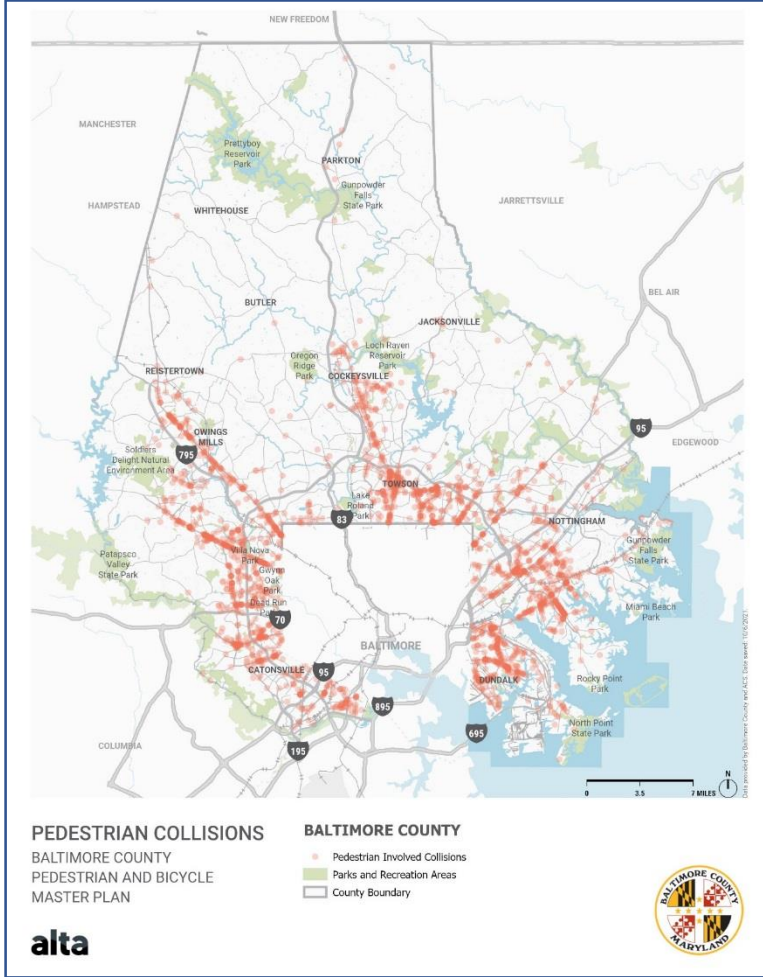
■ Injury/Fatality ■ Property Damage ■ Unknown



■ Injury/Fatality ■ Property Damage ■ Unknown



■ Injury/Fatality ■ property Damage ■ Unknown



Vision + Goals



Draft Vision Statement



“Baltimore County will consist of an active transportation network that is safe and accessible to improve the quality of life and health for users of all ages, abilities, and demographics. ”

Draft Goals



Increase Safety

Decrease bicycle and pedestrian fatalities and injuries.



Ensure Equity

Provide accessibility and affordability for all ages, abilities, and areas with greatest need.



Expand Access & Connectivity

Create a connected walkable and bikeable network to be accessed by all active transportation users.



Enhance Public Health

Increase individual activity by improving access to active transportation and outdoor recreation.



Protect the Environment

Promote active transportation as an environmental good to lower environmental hazards.



Collaborate with Partners

Create internal and external partnerships.



Create Economic Growth

Recognize the economic benefits of pedestrian and bicycle-friendly communities to attract people and businesses.

Project Website



<https://baltimorecountybikeped.weebly.com/>

Community Survey



The user survey will be used to determine general user needs and concerns surrounding transportation and is offered in English and Spanish.

This is a screenshot of the English version of the survey. At the top center is the Baltimore County logo. Below it, the title "Baltimore County Bicycle and Pedestrian Master Plan Public Survey" is displayed in bold. Underneath the title is the heading "Your Voice Matters!" in orange. A paragraph of text explains the purpose of the survey: "This survey is intended to help us understand the needs, opportunities, and priorities for bicycle and pedestrian improvements in Baltimore County. Your feedback is a critical step in developing the Baltimore County Bike and Pedestrian Master Plan and will set the stage for future transportation efforts in Baltimore County." Below this text is a teal button labeled "OK". At the bottom of the survey window, a teal bar shows the progress "0 of 22 answered" with a corresponding progress bar.This is a screenshot of the Spanish version of the survey. At the top center is the Baltimore County logo. Below it, the title "Baltimore County Bicycle and Pedestrian Master Plan Public Survey" is displayed in bold. Underneath the title is the heading "¡Tu voz importa!" in orange. A paragraph of text explains the purpose of the survey: "Esta encuesta está destinada a ayudarnos a comprender las necesidades, oportunidades y prioridades para las mejoras para ciclistas y peatones en el condado de Baltimore. Sus comentarios son un paso crítico en el desarrollo del Plan Maestro para Bicicletas y Peatones del Condado de Baltimore, y prepararán el camino para los esfuerzos de transporte futuros en el Condado de Baltimore." Below this text is a teal button labeled "OK". At the bottom of the survey window, a teal bar shows the progress "0 of 22 answered" with a corresponding progress bar.

Interactive Map



An interactive map allows users to provide feedback in the form of points, lines, and pictures on a web-based map with information such as difficult intersections, desired routes, and popular destinations.



Click "Submit a Recommendation" to get started.



Repeat as many times as you want.



Zoom to or type in the address of where you would like to make your recommendation.



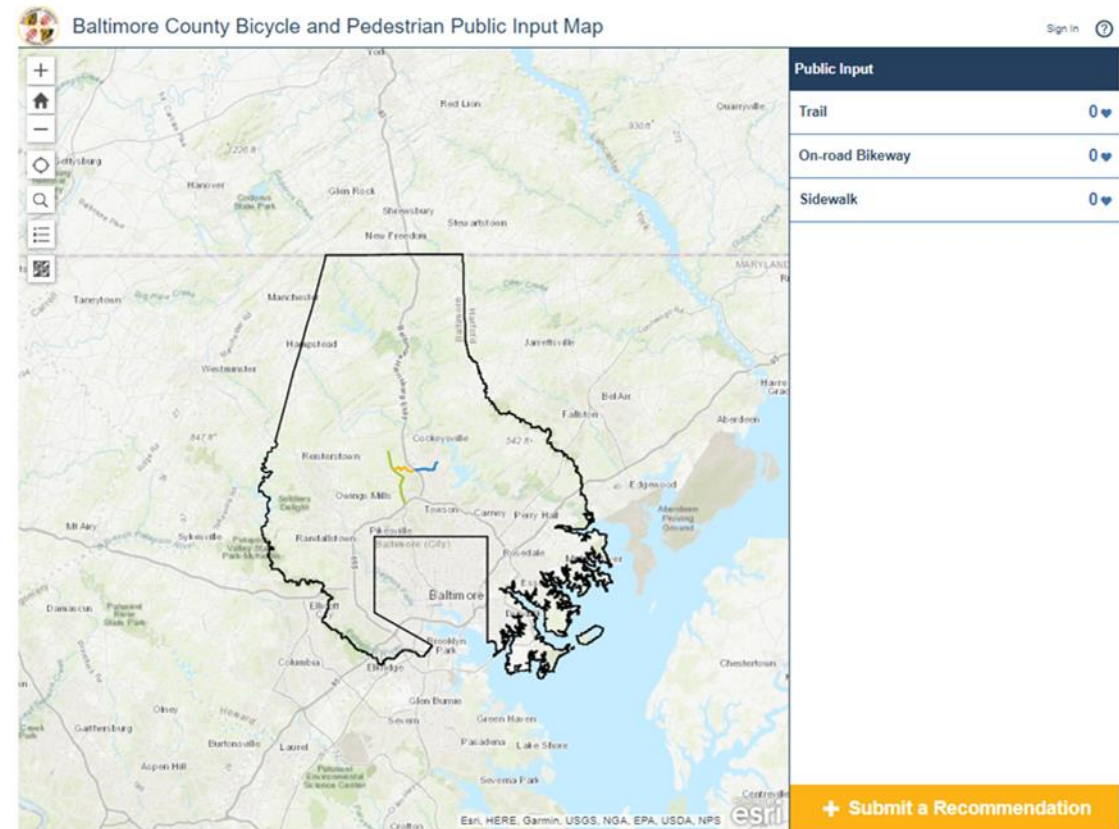
Submit your recommendation.



From pop-up window choose "Facility Type Needed" and draw a line segment on map to represent your recommendation. Comment and add photo if you like.



Like other people's facility recommendations by clicking the heart.



Questions?



A person is riding a bicycle on a paved road, moving away from the viewer. The road has white lane markings and a large white bicycle symbol painted on the surface. The background shows a grassy field and some distant structures under a clear sky. The entire image is covered with a semi-transparent blue filter.

Thank you!

Jessie Bialek

jbialek@baltimorecountymd.gov