



MARYLAND



BICYCLE & PEDESTRIAN 2019 • MASTER PLAN UPDATE

**Baltimore Metropolitan Council
Bicycle and Pedestrian Advisory Group**

May 16, 2018

**Tom Sullivan, Transportation Planner, Maryland Department of
Transportation**

**Overview
Goals and Objectives
Trends and Accomplishments
Needs and Opportunities**



Maryland Bicycle and Pedestrian Master Plan (BPMP)



- Establishes a 20-year vision to support cycling and walking as modes of transportation in Maryland
- Outlined in state statute: Guides initiatives and investments
- Updated every 5 years (Last update 2014).
- Coordinated with and Supports the MD Transportation Plan



Maryland Transportation Plan (MTP)

- **Federal - FAST Act:**

- 20-year vision – policies and priorities.
- Performance-based approaches to support national goals.
- Intermodal and coordinated with regional and other strategic plans
- Reflects financial resources needed
- Contains bicycle and pedestrian access as an element.

- **State Report on Transportation (Annual)**

- Informs project selection/ justification
 - MTP (**Plan**: Policy: Goals/Objectives)
 - Consolidated Transportation **Program** (CTP)
 - Attainment Report (AR) on Transportation **Performance**.

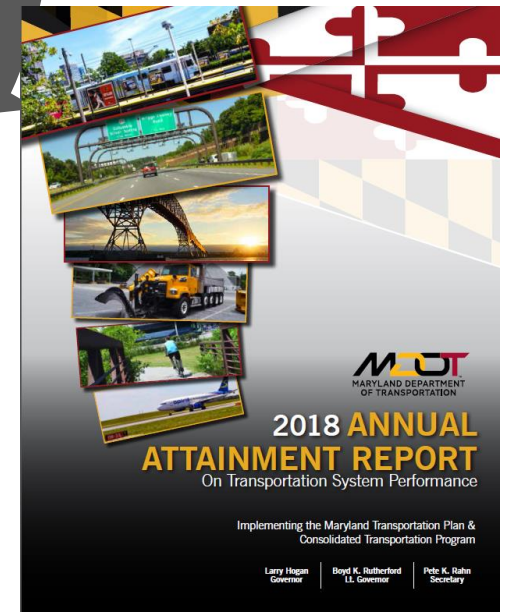
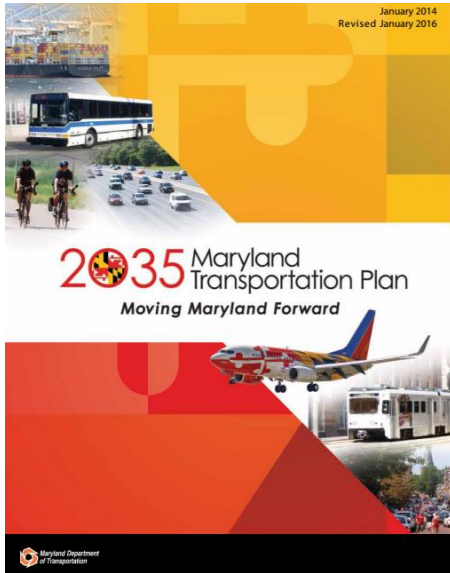


2040
Maryland

TRANSPORTATION PLAN



The State Report on Transportation

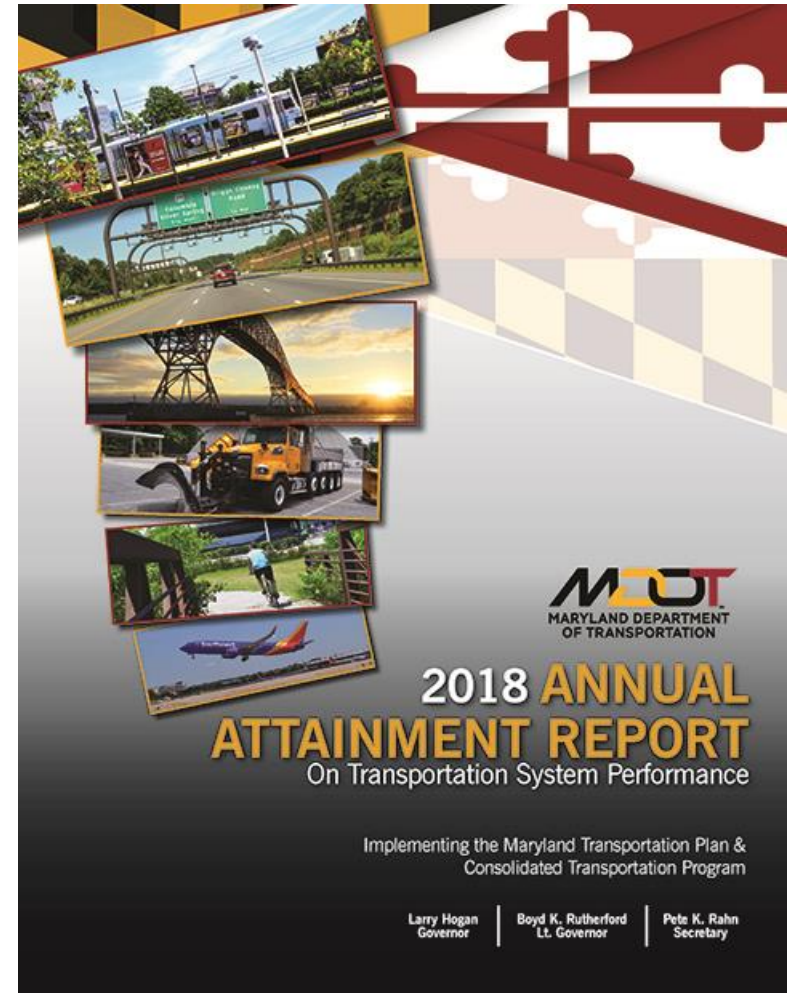




Annual Attainment Report and Performance Monitoring

Includes Tracking of:

- # of Bike Fatalities and Serious Injuries
- Bicycle Level of Comfort
- Miles improved for bicycle access (Target: up 2% each year)
- # of Pedestrian Fatalities and Injuries
- % of State Roadway Miles in Urban Areas with Sidewalks
- % of Sidewalks that meet Americans with Disabilities Act Compliance





Bicycle and Pedestrian Master Plan Update

PROJECT TIMELINE

Initial Outreach,
Data Assessments,
Stakeholder
Meetings



Public Outreach:
Regional Workshops



Prepare and
Release Draft
Plan



Fall 2017

Winter 2018

Spring 2018

Summer 2018

Fall 2018

January 2019



Analysis of Trends;
Data Collection and
Mapping; Needs &
Opportunities



Research & Update
Strategies, Develop
and Refine Key
Initiatives



Release of
Final Plan



Key Inputs



Task Force to Study Bicycle Safety on MD Highways

- 20 Members – MGA, MML, Etc.
- 5 Meetings – Aug. to Nov. 2017
- Priority Issues and Concerns
- 39 Recommendations:
 - Legislative Tools and Operations Guidance
 - Infrastructure Design and Performance Measures
 - Site Access and Utilities
 - Education and Outreach
 - Funding Programs/Needs.



MBPAC: One MDOT 2017

- ◻ TSO (Jan)
- ◻ SHA (April)
- ◻ MTA (July)
- ◻ MAA (Sept)
- ◻ MVA (Dec)

• **MBPAC Roundtable: Oct 20**

• **MBPAC 2018: Agency Partnerships**

- Commerce – Jan
- Health/Education – April 6
- MD State Police – Aug
- MDP/DNR – Nov



2040 Maryland

TRANSPORTATION PLAN

M A R Y L A N D



BICYCLE & PEDESTRIAN ADVISORY COMMITTEE



BIKE SAFETY TASKFORCE



CommuterChoice
Maryland



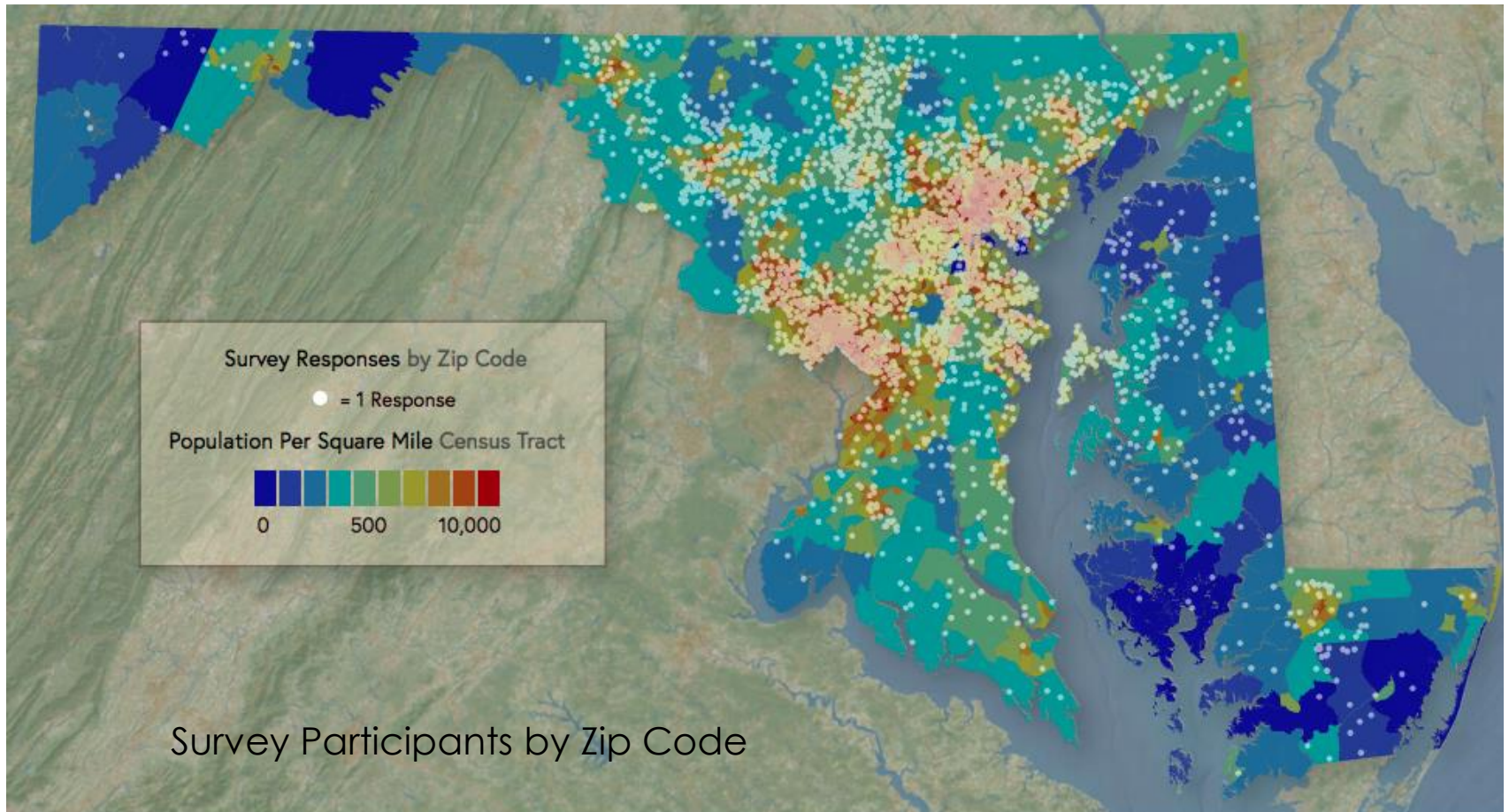
Key Outreach and Inputs:

1. Statewide Events and Public Meetings
 - Trail Workshops
 - Growth Commission and Sub-Cabinet
 - Sustainable Communities
 - MDP: A Better Maryland
 - DNR: Land Preservation and Recreation Plan
2. Surveys:
 - MTP – Statewide Survey
 - Transportation Demand Mgmt (TDM) Commuter Survey
 - BPMP Goals and Objectives (Oct to Mar 2018)
 - Local Governments:
 - Spine Network
 - Data – Bike Inventory



MTP Survey Participation

- Nov 17, 2017 - Jan 31, 2018 - 5927 Participants



Survey data culled from 2040mtp.metroquest.com. Respondents provided their zip code of residence. 3,896 valid Maryland zip codes responses submitted (from survey total of 5,927 responses). Average of 8.8 responses per zip code.



2040 MTP Survey – Top Strategies by Priority

- System Maintenance
- System Expansion
- Travel Reliability
- Tax Dollars Spent Wisely
- Environment
- Quality of Service
- Transportation Choices
- Safety and Security

3

Strategy Rating

What to do

Next Task

STRATEGY RATING


System Expansion

Safety and Security

Travel Reliability

Quality of Service

Transportation Choices



Creating more options for transportation, including building new bike and pedestrian facilities, carpooling and telework.

More about this

Policies and Projects

Support mixed-use higher density development to offer alternatives to single occupant vehicles.

★ ★ ★ ★ ★

Comment

Multimodal Connections

Provide multimodal connections at key facilities to enable transfers between modes of transportation.

★ ★ ★ ★ ★

Comment

Bike and Pedestrian

Ensure bike and pedestrian facilities link to road and transit infrastructure.

★ ★ ★ ★ ★

Comment

Alternative Options

Provide more support for carpooling/ridesharing, telework, guaranteed ride home and flex hours.

★ ★ ★ ★ ★

Comment

Transit Commuting

Provide easier commute via transit, including providing transit incentives.

★ ★ ★ ★ ★


Comment

Suggest another

Next Task

VALUE PREFERENCE

STAY IN TOUCH



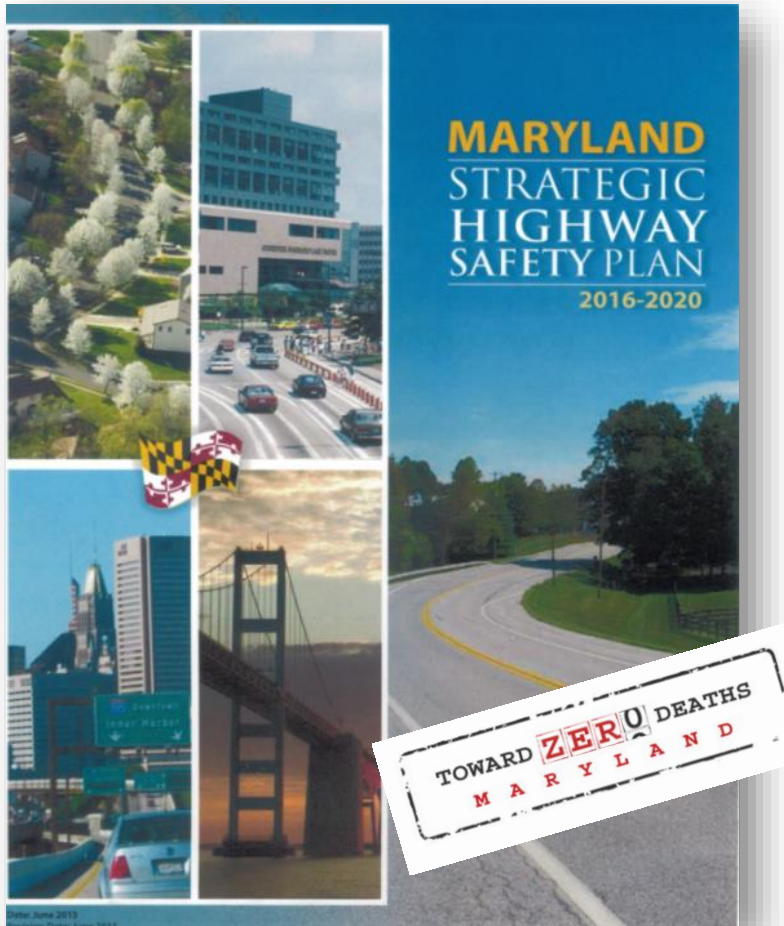


Maryland Strategic Highway Safety Plan

Goal: Towards Zero Deaths
Reduce Fatalities and Serious
Injuries by ½ by 2030

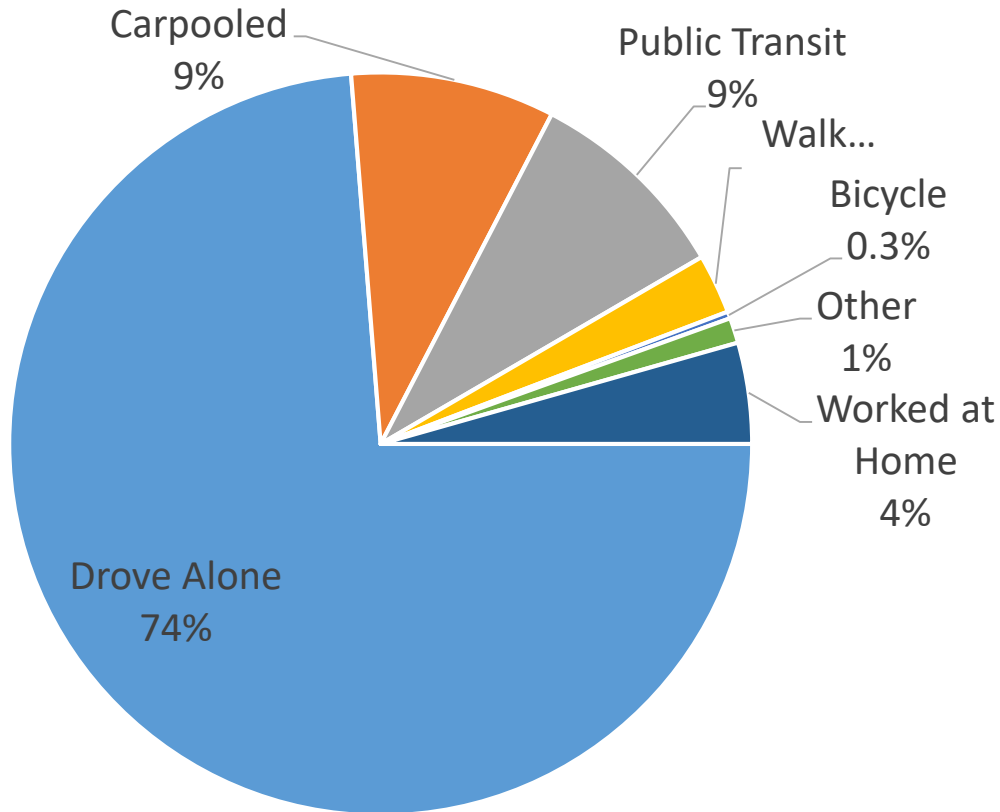
Ped – Bike Emphasis Area Team Strategies:

- Develop and Analyze Safety Data
- Education & Enforcement
- Roadway Treatments & Countermeasures
- Improve Safety Culture
- Use Technology to Prevent Collisions
- Emergency Scene Safety





Existing Conditions and Trends: In 2016, 74% of Maryland Workers Drove Alone to Work



83,505 Workers
↓
**4,152 more
than 2014**

Transportation Demand
Survey – 2017:





Public Meeting

2014 BPMP Goals

- Build Connected Networks
- Improve Safety
- Plan and Design for Everyone
- Strengthen Communities and Local Partners
- Promote Walking and Biking in Maryland

2017–2018 Stakeholder Outreach and Inputs



Draft BPMP Goals for Discussion



Enhance Transportation **Choice** and **Multimodal Connectivity** through Linked Networks



Improve the **Safety** of Bicycle and Pedestrian Travel through Education, Enforcement, and Infrastructure Solutions



Develop **Data-driven** Tools & Innovative Techniques to Support **Efficient** and **Equitable** Planning and Project Development



Build **Partnerships** to Promote **Active Transportation** and Strengthening the Health of our Communities



Advance Biking and Walking as an **Economic Development** Strategy

Emerging New Themes and Priorities

- Transportation Choice
- Integration and Network Connectivity
- Safety, Education, and Enforcement
- Data Development-Measurability
- Technical Assistance and Tools
- Land Use Planning
- Innovation and Technology
- Equity of Access
- Active Transportation and Health
- Economic Development and Impact
- Fiscal Responsibility and Efficiency

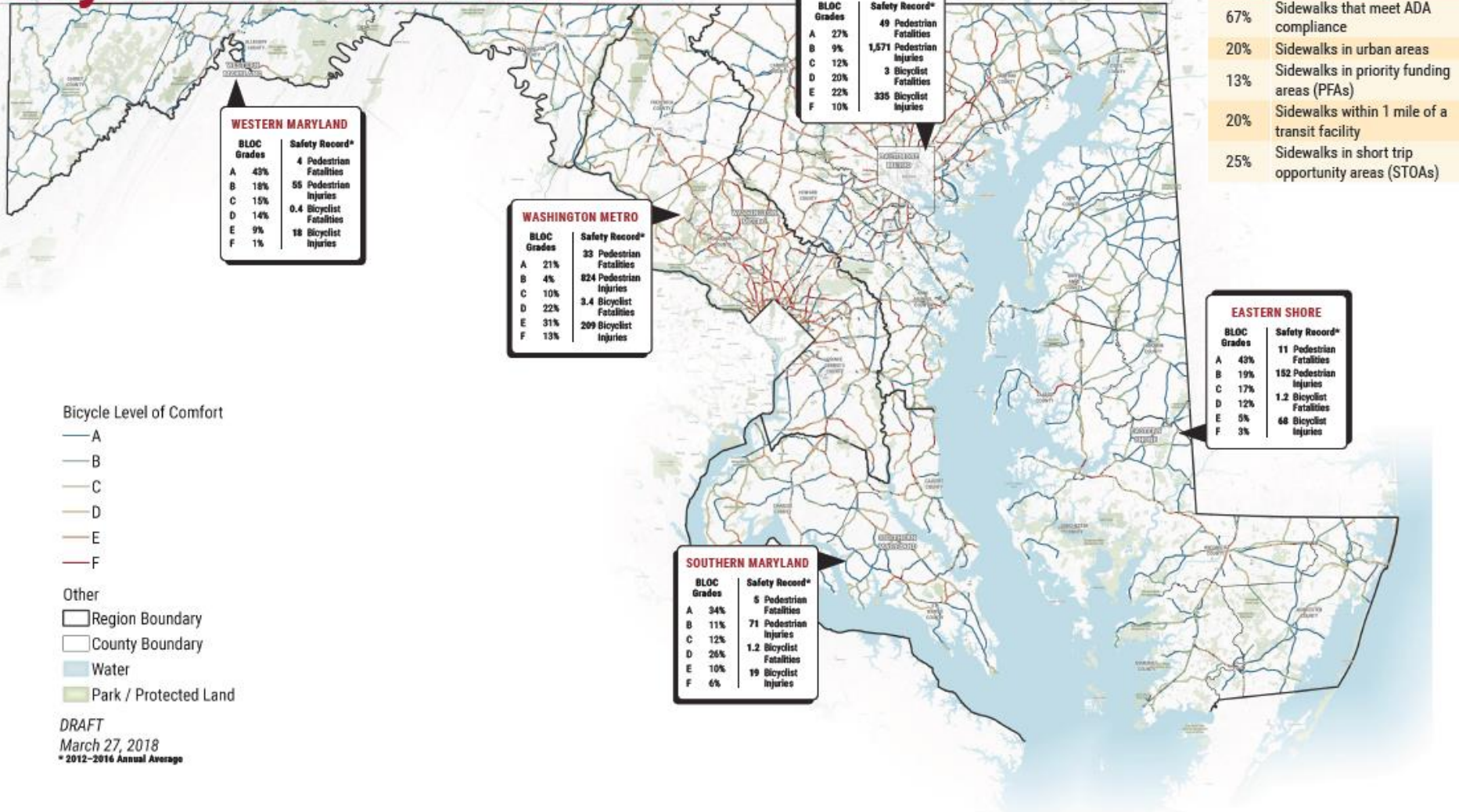


March/April Public Meeting

Draft Goals	Needs/Opportunities	Place a Dot on Your Top <u>Three</u> Needs	Missing a Need? Leave Sticky Note here:
Enhance Transportation Choice and Multimodal Connectivity through Linked Networks	Address key gaps and problem areas for bicycle and pedestrian connections		
	Update statewide trails and bike facility inventory		
	Further develop multimodal transportation links and integration with transit		
Improve the Safety of Bicycle and Pedestrian Travel through Education, Enforcement, and Infrastructure Solutions	Improve education and training for professionals in bike/ped safety, with enhanced training for law enforcement		
	Facilitate bike/ped safety education in schools and for the public that includes improved driver education and bike/ped awareness		
	Increase use of innovative design solutions to enhance bike/ped safety		
Develop Data-driven Tools & Innovative Techniques to Support Efficient and Equitable Planning and Project Development	Explore new methods and improve tools to better capture bike/ped trip statistics and multi-modal trips		
	Improve collection and analysis of crash data		
	Update " Short Trip Opportunity Area " analysis using GIS to prioritize those areas in need of bicycle and pedestrian infrastructure		
Build Partnerships to Promote Active Transportation and Strengthening the Health of our Communities	Improve coordination between state agencies, MPOs, county and local jurisdictions, and advocates to support biking and walking		
	Support and facilitate education on the health benefits of biking and walking in all communities		
	Ensure environmental stewardship by increasing equitable access to parks, trail networks, and public facilities for bicycles and pedestrians		
Advance Biking and Walking as an Economic Development Strategy	Improve strategies and measurements for studying the economic impact of bicycle and pedestrian projects on communities		
	Support biking and walking as a revitalization strategy		
	Promote recreational trail systems in addressing the advantages of bicycling and walking for businesses		

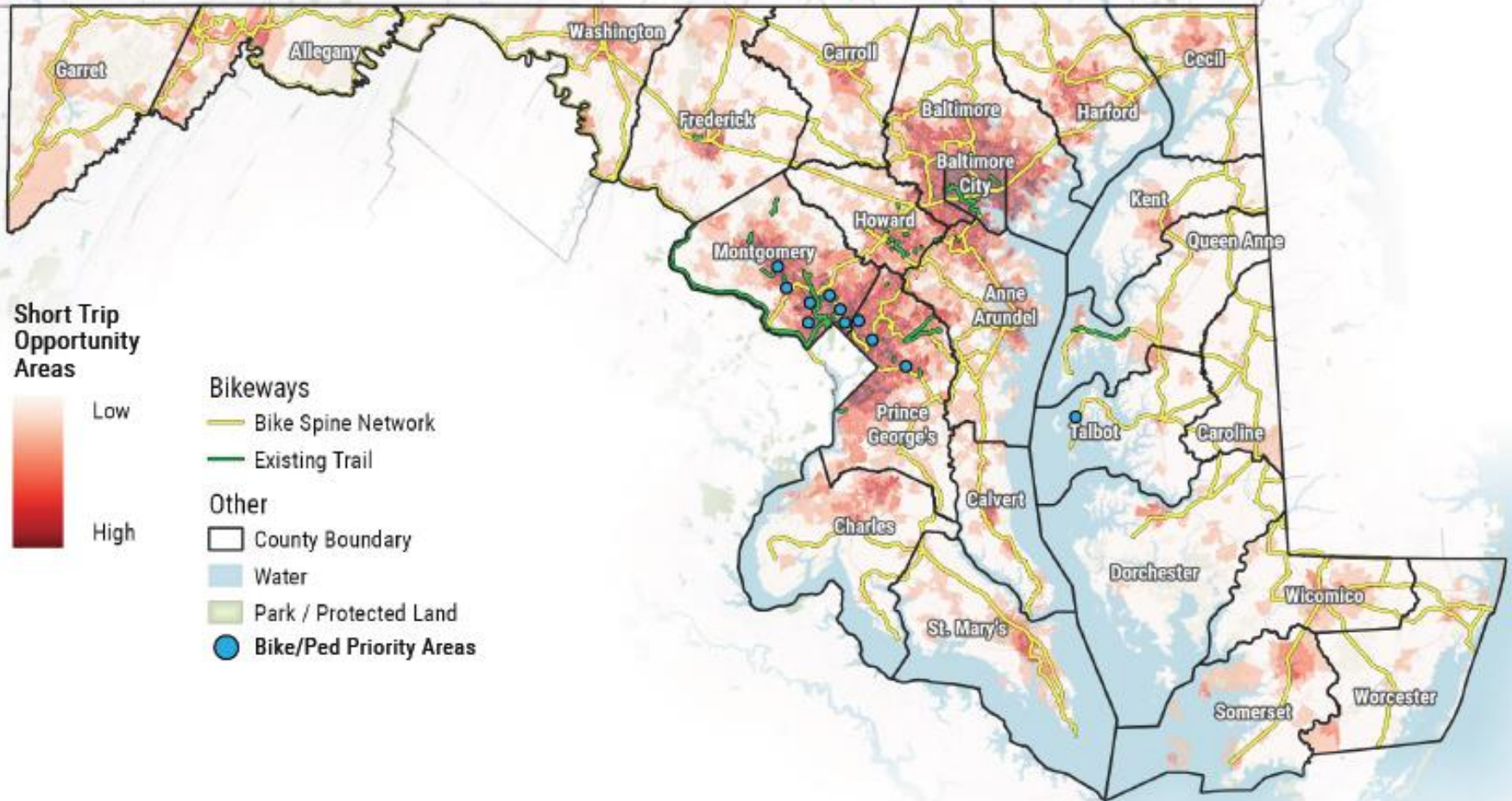


Bicycle Level of Comfort





Spine Network and Short Trip Opportunity Areas



10 0 10 20 mi





What's Next

June 7th: Bike Ped Plan Public Meeting (Evening – Prince George's)

September/October: Draft for Public Comment

Website: www.mdot.maryland.gov/BikePedPlanUpdate

Email: BikePedPlanUpdate@mdot.state.us

Contact: Marty Baker or Tom Sullivan – MDOT TSO Office of Planning and Capital Programming