

### Tollgate Road

<b>TIP ID</b>	15-1404-42	<b>Year of Operation</b>	2018
<b>Agency</b>	Harford County	<b>Project Type</b>	New or extended roadways
<b>Project Category</b>	Highway Capacity	<b>Functional Class</b>	Local
<b>Conformity Status</b>	Not Exempt	<b>Physical Data</b>	0 to 2 lanes, .25 miles
<b>CIP or CTP ID(s)</b>		<b>Est. Total Cost</b>	\$3,120,000

**Description:**

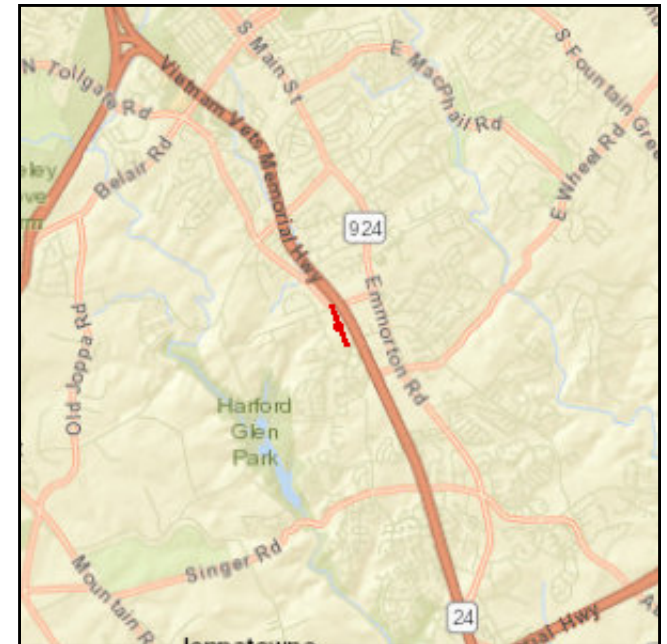
The Tollgate Road corridor is being improved to meet current traffic demands. Once all current projects are completed, the only remaining concern would be the "missing" segment from Plumtree Road south to Bel Air South Parkway. This will be a developer funded project.

**Justification:**

This project meets the goals of the Transportation Element of the Master Plan by maintaining a safe and adequate transportation network to serve existing and future populations.

**Connection to Long-Range Transportation Planning Goals:**

- 4. Increase Mobility





Tollgate Road

(Funding in Thousands)

Other

Phase	FY 2018 Federal Funds	FY 2018 Matching Funds	FY 2019 Federal Funds	FY 2019 Matching Funds	FY 2020 Federal Funds	FY 2020 Matching Funds	FY 2021 Federal Funds	FY 2021 Matching Funds	Total Four-Year Funding Request
CON	\$0	\$1,935	\$0	\$0	\$0	\$0	\$0	\$0	\$1,935
OTH	\$0	\$0	\$0	\$0	\$0	\$0	\$0	\$0	\$0
PE	\$0	\$15	\$0	\$0	\$0	\$0	\$0	\$0	\$15
PP	\$0	\$0	\$0	\$0	\$0	\$0	\$0	\$0	\$0
ROW	\$0	\$0	\$0	\$0	\$0	\$0	\$0	\$0	\$0
<b>Subtotal</b>	<b>\$0</b>	<b>\$1,950</b>	<b>\$0</b>	<b>\$0</b>	<b>\$0</b>	<b>\$0</b>	<b>\$0</b>	<b>\$0</b>	<b>\$1,950</b>
<b>Total</b>	<b>\$0</b>	<b>\$1,950</b>	<b>\$0</b>	<b>\$0</b>	<b>\$0</b>	<b>\$0</b>	<b>\$0</b>	<b>\$0</b>	<b>\$1,950</b>

### Carrs Mill Road Bridge #216 over Bear Cabin Branch

<b>TIP ID</b>	15-0701-13	<b>Year of Operation</b>	2018
<b>Agency</b>	Harford County	<b>Project Type</b>	Bridge repair/deck replacement
<b>Project Category</b>	Highway Preservation	<b>Functional Class</b>	Local
<b>Conformity Status</b>	Exempt	<b>Physical Data</b>	2 to 2 lanes
<b>CIP or CTP ID(s)</b>	H084501	<b>Est. Total Cost</b>	\$2,575,000

**Description:**

This project is to replace the triple-cell concrete pipe bridge that carries Carrs Mill Road over Bear Cabin Branch. The concrete pipes and the slate headwalls are severely deteriorated and need to be replaced. 3 foot shoulders planned on both sides of the road.

PE funding in a previous TIP.

**Justification:**

The project will improve the road alignment at this structure and the hydraulic capacity of the structure. This project is consistent with the Master Planning goal of maintaining a safe and adequate transportation system to serve existing and future populations.

**Connection to Long-Range Transportation Planning Goals:**

2.A Improve and Maintain the Existing Infrastructure -- Improve the condition of roadway systems (pavement, bridges, tunnels).





**Carrs Mill Road Bridge #216 over Bear Cabin Branch**

(Funding in Thousands)

**Surface Transportation Block Grant Program**

Phase	FY 2018 Federal Funds	FY 2018 Matching Funds	FY 2019 Federal Funds	FY 2019 Matching Funds	FY 2020 Federal Funds	FY 2020 Matching Funds	FY 2021 Federal Funds	FY 2021 Matching Funds	Total Four-Year Funding Request
CON	\$150	\$30	\$0	\$0	\$0	\$0	\$0	\$0	\$180
OTH	\$0	\$0	\$0	\$0	\$0	\$0	\$0	\$0	\$0
PE	\$0	\$0	\$0	\$0	\$0	\$0	\$0	\$0	\$0
PP	\$0	\$0	\$0	\$0	\$0	\$0	\$0	\$0	\$0
ROW	\$0	\$0	\$0	\$0	\$0	\$0	\$0	\$0	\$0
<b>Subtotal</b>	<b>\$150</b>	<b>\$30</b>	<b>\$0</b>	<b>\$0</b>	<b>\$0</b>	<b>\$0</b>	<b>\$0</b>	<b>\$0</b>	<b>\$180</b>
<b>Total</b>	<b>\$150</b>	<b>\$30</b>	<b>\$0</b>	<b>\$0</b>	<b>\$0</b>	<b>\$0</b>	<b>\$0</b>	<b>\$0</b>	<b>\$180</b>

### Abingdon Road Bridge #169 over CSX Railroad

<b>TIP ID</b>	15-1001-13	<b>Year of Operation</b>	2019
<b>Agency</b>	Harford County	<b>Project Type</b>	Bridge repair/deck replacement
<b>Project Category</b>	Highway Preservation	<b>Functional Class</b>	Minor Arterial
<b>Conformity Status</b>	Exempt	<b>Physical Data</b>	2 to 2 lanes
<b>CIP or CTP ID(s)</b>		<b>Est. Total Cost</b>	\$4,455,000

**Description:**

Replace the bridge that carries Abingdon Road over the CSX Railroad tracks. 5 foot sidewalk planned on one side of the road.

PE funding in a previous TIP. Additional PE funds requested in FY 2018.

**Justification:**

Replacement is necessary due to the bridge's multiple deficiencies that include substandard railings and curbs, deteriorating deck and deteriorating beams.

**Connection to Long-Range Transportation Planning Goals:**

2.A Improve and Maintain the Existing Infrastructure -- Improve the condition of roadway systems (pavement, bridges, tunnels).





**Abingdon Road Bridge #169 over CSX Railroad**

(Funding in Thousands)

**Surface Transportation Block Grant Program**

Phase	FY 2018 Federal Funds	FY 2018 Matching Funds	FY 2019 Federal Funds	FY 2019 Matching Funds	FY 2020 Federal Funds	FY 2020 Matching Funds	FY 2021 Federal Funds	FY 2021 Matching Funds	Total Four-Year Funding Request
CON	\$0	\$0	\$2,420	\$605	\$0	\$0	\$0	\$0	\$3,025
OTH	\$0	\$0	\$80	\$120	\$0	\$0	\$0	\$0	\$200
PE	\$160	\$40	\$0	\$0	\$0	\$0	\$0	\$0	\$200
PP	\$0	\$0	\$0	\$0	\$0	\$0	\$0	\$0	\$0
ROW	\$0	\$0	\$0	\$0	\$0	\$0	\$0	\$0	\$0
<b>Subtotal</b>	<b>\$160</b>	<b>\$40</b>	<b>\$2,500</b>	<b>\$725</b>	<b>\$0</b>	<b>\$0</b>	<b>\$0</b>	<b>\$0</b>	<b>\$3,425</b>
<b>Total</b>	<b>\$160</b>	<b>\$40</b>	<b>\$2,500</b>	<b>\$725</b>	<b>\$0</b>	<b>\$0</b>	<b>\$0</b>	<b>\$0</b>	<b>\$3,425</b>

### Chestnut Hill Bridge #40

<b>TIP ID</b>	15-1101-13	<b>Year of Operation</b>	2021
<b>Agency</b>	Harford County	<b>Project Type</b>	Bridge repair/deck replacement
<b>Project Category</b>	Highway Preservation	<b>Functional Class</b>	Local
<b>Conformity Status</b>	Not Exempt	<b>Physical Data</b>	1 to 2 lanes
<b>CIP or CTP ID(s)</b>		<b>Est. Total Cost</b>	\$1,215,000

**Description:**

This project will replace the existing Chestnut Hill Road Bridge. 3 foot shoulders planned on both sides of the road.

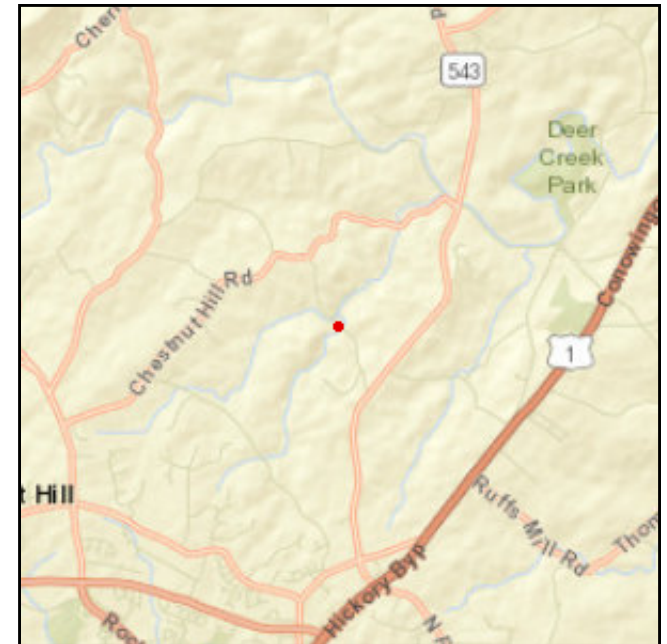
PE funding in a previous TIP.

**Justification:**

The current structure is a single-lane bridge with deteriorating superstructure and an inadequate waterway opening.

**Connection to Long-Range Transportation Planning Goals:**

2.A Improve and Maintain the Existing Infrastructure -- Improve the condition of roadway systems (pavement, bridges, tunnels).





Chestnut Hill Bridge #40

(Funding in Thousands)

Surface Transportation Block Grant Program

Phase	FY 2018 Federal Funds	FY 2018 Matching Funds	FY 2019 Federal Funds	FY 2019 Matching Funds	FY 2020 Federal Funds	FY 2020 Matching Funds	FY 2021 Federal Funds	FY 2021 Matching Funds	Total Four-Year Funding Request
CON	\$0	\$0	\$0	\$0	\$0	\$0	\$620	\$305	\$925
OTH	\$0	\$0	\$0	\$0	\$0	\$0	\$60	\$20	\$80
PE	\$0	\$0	\$0	\$0	\$0	\$0	\$0	\$0	\$0
PP	\$0	\$0	\$0	\$0	\$0	\$0	\$0	\$0	\$0
ROW	\$0	\$30	\$0	\$0	\$0	\$0	\$0	\$0	\$30
<b>Subtotal</b>	<b>\$0</b>	<b>\$30</b>	<b>\$0</b>	<b>\$0</b>	<b>\$0</b>	<b>\$0</b>	<b>\$680</b>	<b>\$325</b>	<b>\$1,035</b>
<b>Total</b>	<b>\$0</b>	<b>\$30</b>	<b>\$0</b>	<b>\$0</b>	<b>\$0</b>	<b>\$0</b>	<b>\$680</b>	<b>\$325</b>	<b>\$1,035</b>



### Phillips Mill Road Bridge #70 over East Branch Tributary

<b>TIP ID</b>	15-1102-13	<b>Year of Operation</b>	2020
<b>Agency</b>	Harford County	<b>Project Type</b>	Bridge repair/deck replacement
<b>Project Category</b>	Highway Preservation	<b>Functional Class</b>	Local
<b>Conformity Status</b>	Exempt	<b>Physical Data</b>	2 to 2 lanes
<b>CIP or CTP ID(s)</b>		<b>Est. Total Cost</b>	\$2,985,000

**Description:**

This project is to replace the bridge that carries Phillips Mill Road over a tributary to East Branch. 3 foot shoulders planned on both sides of the road.

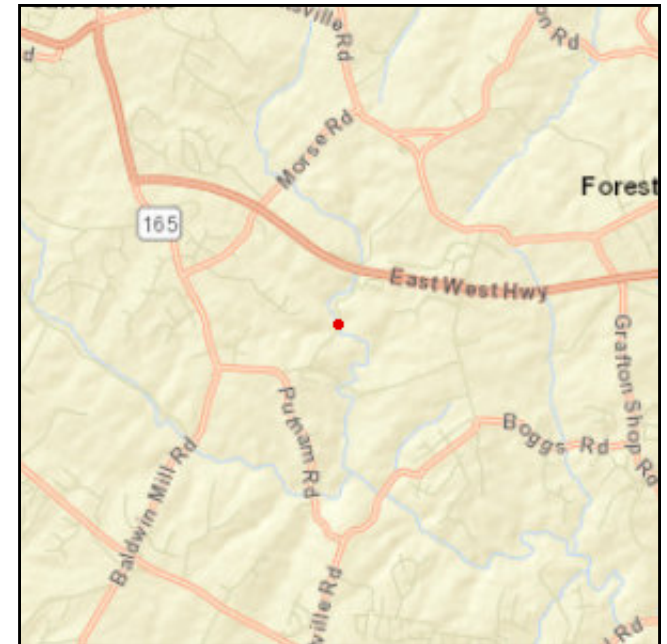
PE funding in a previous TIP.

**Justification:**

The existing structure shows scour around the abutments, a deteriorated deck, and an undersized waterway opening.

**Connection to Long-Range Transportation Planning Goals:**

2.A Improve and Maintain the Existing Infrastructure -- Improve the condition of roadway systems (pavement, bridges, tunnels).





Phillips Mill Road Bridge #70 over East Branch Tributary

(Funding in Thousands)

Surface Transportation Block Grant Program

Phase	FY 2018 Federal Funds	FY 2018 Matching Funds	FY 2019 Federal Funds	FY 2019 Matching Funds	FY 2020 Federal Funds	FY 2020 Matching Funds	FY 2021 Federal Funds	FY 2021 Matching Funds	Total Four-Year Funding Request
CON	\$0	\$0	\$0	\$0	\$1,920	\$480	\$0	\$0	\$2,400
OTH	\$0	\$0	\$0	\$0	\$80	\$20	\$0	\$0	\$100
PE	\$0	\$0	\$0	\$0	\$0	\$0	\$0	\$0	\$0
PP	\$0	\$0	\$0	\$0	\$0	\$0	\$0	\$0	\$0
ROW	\$0	\$0	\$0	\$0	\$0	\$0	\$0	\$0	\$0
<b>Subtotal</b>	<b>\$0</b>	<b>\$0</b>	<b>\$0</b>	<b>\$0</b>	<b>\$2,000</b>	<b>\$500</b>	<b>\$0</b>	<b>\$0</b>	<b>\$2,500</b>
<b>Total</b>	<b>\$0</b>	<b>\$0</b>	<b>\$0</b>	<b>\$0</b>	<b>\$2,000</b>	<b>\$500</b>	<b>\$0</b>	<b>\$0</b>	<b>\$2,500</b>

### Robinson Mill Road Bridge #154 over Broad Creek

<b>TIP ID</b>	15-1401-13	<b>Year of Operation</b>	2018
<b>Agency</b>	Harford County	<b>Project Type</b>	Bridge repair/deck replacement
<b>Project Category</b>	Highway Preservation	<b>Functional Class</b>	Local
<b>Conformity Status</b>	Exempt	<b>Physical Data</b>	2 to 2 lanes
<b>CIP or CTP ID(s)</b>		<b>Est. Total Cost</b>	\$1,685,000

**Description:**

This project is to replace the entire bridge that carries Robinson Mill Road over Broad Creek. The two-lane approach road on both ends of the bridge includes horizontal curves that restrict sight distance across the bridge. 3 foot shoulders planned on both sides of the road.

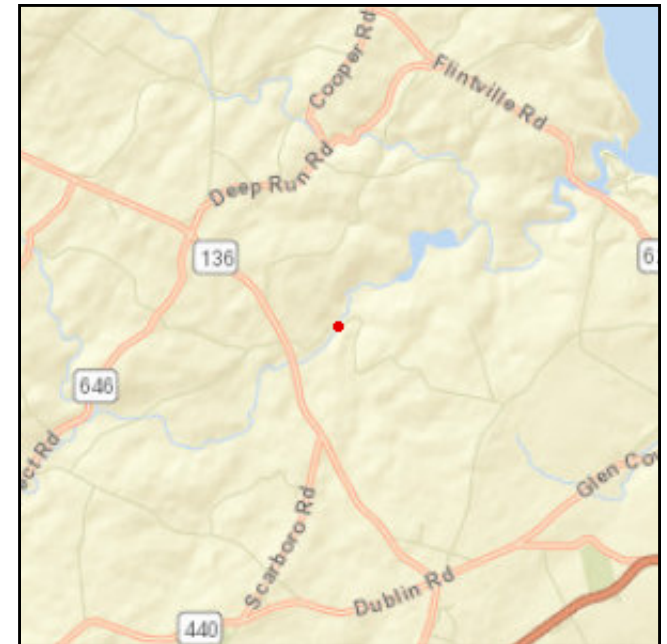
PE funding in a previous TIP.

**Justification:**

The beams and deck are severely deteriorated and need to be replaced. This project is consistent with the Master Planning goal of maintaining a safe and adequate transportation system to serve existing and future populations.

**Connection to Long-Range Transportation Planning Goals:**

- 1.C Improve System Safety -- Eliminate hazardous or substandard conditions.
- 2.A Improve and Maintain the Existing Infrastructure -- Improve the condition of roadway systems (pavement, bridges, tunnels).





Robinson Mill Road Bridge #154 over Broad Creek

(Funding in Thousands)

Surface Transportation Block Grant Program

Phase	FY 2018 Federal Funds	FY 2018 Matching Funds	FY 2019 Federal Funds	FY 2019 Matching Funds	FY 2020 Federal Funds	FY 2020 Matching Funds	FY 2021 Federal Funds	FY 2021 Matching Funds	Total Four-Year Funding Request
CON	\$240	\$60	\$0	\$0	\$0	\$0	\$0	\$0	\$300
OTH	\$0	\$0	\$0	\$0	\$0	\$0	\$0	\$0	\$0
PE	\$0	\$0	\$0	\$0	\$0	\$0	\$0	\$0	\$0
PP	\$0	\$0	\$0	\$0	\$0	\$0	\$0	\$0	\$0
ROW	\$0	\$0	\$0	\$0	\$0	\$0	\$0	\$0	\$0
<b>Subtotal</b>	<b>\$240</b>	<b>\$60</b>	<b>\$0</b>	<b>\$0</b>	<b>\$0</b>	<b>\$0</b>	<b>\$0</b>	<b>\$0</b>	<b>\$300</b>
<b>Total</b>	<b>\$240</b>	<b>\$60</b>	<b>\$0</b>	<b>\$0</b>	<b>\$0</b>	<b>\$0</b>	<b>\$0</b>	<b>\$0</b>	<b>\$300</b>

### Stafford Road Bridge #24 over Deer Creek

<b>TIP ID</b>	15-1501-13	<b>Year of Operation</b>	2019
<b>Agency</b>	Harford County	<b>Project Type</b>	Bridge repair/deck replacement
<b>Project Category</b>	Highway Preservation	<b>Functional Class</b>	Local
<b>Conformity Status</b>	Exempt	<b>Physical Data</b>	2 to 2 lanes
<b>CIP or CTP ID(s)</b>		<b>Est. Total Cost</b>	\$1,925,000

**Description:**

This is a bridge rehabilitation project to consist of repair and/or replacement of the bridge deck and repairs to the beam seats, abutments, wingwalls, piers, backwalls, rocker bearings, and railing posts. The current sufficiency rating is 52.3.

PE funding in a previous TIP. Additional PE included in FY 2018.

**Justification:**

The bridge, built in 1950, shows numerous deficiencies and areas of deterioration. The purpose of this project is to rehabilitate the bridge to extend its useful life for another 40 years.

**Connection to Long-Range Transportation Planning Goals:**

2.A Improve and Maintain the Existing Infrastructure -- Improve the condition of roadway systems (pavement, bridges, tunnels).





Stafford Road Bridge #24 over Deer Creek

(Funding in Thousands)

Surface Transportation Block Grant Program

Phase	FY 2018 Federal Funds	FY 2018 Matching Funds	FY 2019 Federal Funds	FY 2019 Matching Funds	FY 2020 Federal Funds	FY 2020 Matching Funds	FY 2021 Federal Funds	FY 2021 Matching Funds	Total Four-Year Funding Request
CON	\$0	\$0	\$1,200	\$300	\$0	\$0	\$0	\$0	\$1,500
OTH	\$0	\$0	\$80	\$20	\$0	\$0	\$0	\$0	\$100
PE	\$100	\$25	\$0	\$0	\$0	\$0	\$0	\$0	\$125
PP	\$0	\$0	\$0	\$0	\$0	\$0	\$0	\$0	\$0
ROW	\$0	\$0	\$0	\$0	\$0	\$0	\$0	\$0	\$0
<b>Subtotal</b>	<b>\$100</b>	<b>\$25</b>	<b>\$1,280</b>	<b>\$320</b>	<b>\$0</b>	<b>\$0</b>	<b>\$0</b>	<b>\$0</b>	<b>\$1,725</b>
<b>Total</b>	<b>\$100</b>	<b>\$25</b>	<b>\$1,280</b>	<b>\$320</b>	<b>\$0</b>	<b>\$0</b>	<b>\$0</b>	<b>\$0</b>	<b>\$1,725</b>

### Glenville Road Bridge #30

<b>TIP ID</b>	15-1601-13	<b>Year of Operation</b>	2020
<b>Agency</b>	Harford County	<b>Project Type</b>	Bridge repair/deck replacement
<b>Project Category</b>	Highway Preservation	<b>Functional Class</b>	Local
<b>Conformity Status</b>	Not Exempt	<b>Physical Data</b>	1 to 2 lanes
<b>CIP or CTP ID(s)</b>		<b>Est. Total Cost</b>	\$1,480,000

**Description:**

Replace the bridge that carries Glenville Road over Mill Brook. 3 foot shoulders planned on both sides of the road.

PE funding in a previous TIP. Additional PE included in FY 2018.

**Justification:**

The existing bridge is a single lane, steel beam, concrete deck structure. The existing concrete deck, exterior beams, and wingwalls are severely deteriorated and there is evidence of scour under the western abutment.

**Connection to Long-Range Transportation Planning Goals:**

2.A Improve and Maintain the Existing Infrastructure -- Improve the condition of roadway systems (pavement, bridges, tunnels).





**Glenville Road Bridge #30**

(Funding in Thousands)

**Surface Transportation Block Grant Program**

Phase	FY 2018 Federal Funds	FY 2018 Matching Funds	FY 2019 Federal Funds	FY 2019 Matching Funds	FY 2020 Federal Funds	FY 2020 Matching Funds	FY 2021 Federal Funds	FY 2021 Matching Funds	Total Four-Year Funding Request
CON	\$0	\$0	\$0	\$0	\$776	\$194	\$0	\$0	\$970
OTH	\$0	\$0	\$0	\$0	\$60	\$15	\$0	\$0	\$75
PE	\$0	\$40	\$0	\$0	\$0	\$0	\$0	\$0	\$40
PP	\$0	\$0	\$0	\$0	\$0	\$0	\$0	\$0	\$0
ROW	\$0	\$0	\$0	\$25	\$0	\$0	\$0	\$0	\$25
<b>Subtotal</b>	<b>\$0</b>	<b>\$40</b>	<b>\$0</b>	<b>\$25</b>	<b>\$836</b>	<b>\$209</b>	<b>\$0</b>	<b>\$0</b>	<b>\$1,110</b>
<b>Total</b>	<b>\$0</b>	<b>\$40</b>	<b>\$0</b>	<b>\$25</b>	<b>\$836</b>	<b>\$209</b>	<b>\$0</b>	<b>\$0</b>	<b>\$1,110</b>



**Bridge Inspection Program**

<b>TIP ID</b>	15-9411-14	<b>Year of Operation</b>	Ongoing
<b>Agency</b>	Harford County	<b>Project Type</b>	Bridge inspections
<b>Project Category</b>	Highway Preservation	<b>Functional Class</b>	NA
<b>Conformity Status</b>	Exempt	<b>Physical Data</b>	NA
<b>CIP or CTP ID(s)</b>	H054501	<b>Est. Total Cost</b>	\$2,050,000

**Description:**

This federal program provides funding for the inspection of bridges in Harford County.

**Justification:**

Federal law mandates the inspection of all bridges over 20 feet clear span on a two-year cycle. The bridge inspection data is analyzed to develop priorities for bridge repairs & replacements. As of September 2009, Harford County maintains 66 structures under 20 feet and 155 structures longer than 20 feet.

**Connection to Long-Range Transportation Planning Goals:**

2.A Improve and Maintain the Existing Infrastructure -- Improve the condition of roadway systems (pavement, bridges, tunnels).





**Bridge Inspection Program**

(Funding in Thousands)

**Surface Transportation Block Grant Program**

Phase	FY 2018 Federal Funds	FY 2018 Matching Funds	FY 2019 Federal Funds	FY 2019 Matching Funds	FY 2020 Federal Funds	FY 2020 Matching Funds	FY 2021 Federal Funds	FY 2021 Matching Funds	Total Four-Year Funding Request
CON	\$0	\$0	\$0	\$0	\$0	\$0	\$0	\$0	\$0
OTH	\$0	\$0	\$0	\$0	\$0	\$0	\$0	\$0	\$0
PE	\$100	\$100	\$800	\$0	\$100	\$100	\$850	\$0	\$2,050
PP	\$0	\$0	\$0	\$0	\$0	\$0	\$0	\$0	\$0
ROW	\$0	\$0	\$0	\$0	\$0	\$0	\$0	\$0	\$0
<b>Subtotal</b>	<b>\$100</b>	<b>\$100</b>	<b>\$800</b>	<b>\$0</b>	<b>\$100</b>	<b>\$100</b>	<b>\$850</b>	<b>\$0</b>	<b>\$2,050</b>
<b>Total</b>	<b>\$100</b>	<b>\$100</b>	<b>\$800</b>	<b>\$0</b>	<b>\$100</b>	<b>\$100</b>	<b>\$850</b>	<b>\$0</b>	<b>\$2,050</b>